



Rewarding Learning

General Certificate of Secondary Education  
2015

Centre Number

--	--	--	--	--

Candidate Number

--	--	--	--

# Engineering

Paper 1  
Assessment Unit 3  
*assessing*  
Engineering Technology



[GEE31]

TUESDAY 19 MAY, MORNING

### TIME

1 hour, plus your additional time allowance.

### INSTRUCTIONS TO CANDIDATES

Write your Centre Number and Candidate Number in the spaces provided at the top of this page.  
Write your answers in the spaces provided in this question paper.  
Answer **all ten** questions.

### INFORMATION FOR CANDIDATES

The total mark for this paper is 80.  
Figures in brackets printed down the right-hand side of pages indicate the marks awarded to each part question.

For Examiner's use only	
Question Number	Marks
1	
2	
3	
4	
5	
6	
7	
8	
9	
10	
<b>Total Marks</b>	

Answer **all** questions

Examiner Only	
Marks	Remark

1 (a) All the products below belong to a manufacturing sector.

Circle **two** products shown below that belong to the mechanical fabrication sector.

You **must** only circle **two** products. If you make a mistake you must clearly show which two products you have chosen.



© Thinkstock



© Thinkstock



© Thinkstock



© Thinkstock



© Thinkstock



© Thinkstock  
[2]

(b) All the products below belong to a manufacturing sector.

Circle **two** products shown below that belong to the engineering fabrication sector.

You **must** only circle **two** products. If you make a mistake you must clearly show which two products you have chosen.



© Thinkstock



© Thinkstock



© Thinkstock



© Thinkstock



© Thinkstock




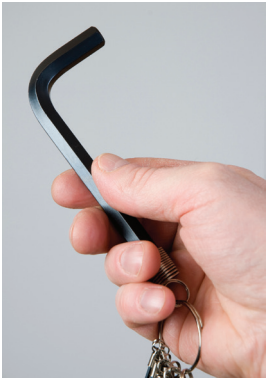

© Thinkstock

[2]

Examiner Only	
Marks	Remark

2 Answer all parts of this question in the spaces provided below.



Examiner Only	
Marks	Remark

Question	Answer
<p>(a) Identify the joining process shown and give a practical example of where it could be used.</p>  <p style="text-align: right;"><small>© Thinkstock</small></p>	<p>Joining process</p> <hr/> <p>Use</p> <hr/> <hr/>
<p>(b) Name the tool shown below and state <b>one</b> use for it.</p>  <p style="text-align: right;"><small>© Thinkstock</small></p>	<p>Name of item</p> <hr/> <p>Use</p> <hr/> <hr/>
<p>(c) Identify the cutting tool shown below and give <b>one</b> safety precaution that should be observed when using this tool.</p>  <p style="text-align: right;"><small>© Thinkstock</small></p>	<p>Name</p> <hr/> <p>Safety precaution</p> <hr/> <hr/>

[2]

[2]

[2]

Question	Answer
<p>(d) Identify the joining process that uses the tool shown below and give a practical example of where it could be used.</p>  <p>© Thinkstock</p>	<p>Joining process</p> <hr/> <p>Use</p> <hr/> <hr/>
<p>(e) Name the tool shown below and state <b>one</b> use for it in an Engineering room.</p>  <p>© Thinkstock</p>	<p>Tool</p> <hr/> <p>Use</p> <hr/> <hr/>

[2]

[2]

Examiner Only	
Marks	Remark

Examiner Only	
Marks	Remark

3 ICT is used to organise and control production in engineering industries.

(a) What does the abbreviation ICT stand for?

---

---

[1]

(b) Give **one** advantage of using ICT in the workplace.

---

---

[1]

(c) Give **one** disadvantage of using ICT in the workplace.

---

---

[1]

(d) Describe, giving **two** examples, why the electronic transfer of data is useful for companies with separate sites.

---

---

---

---

[2]

(e) Methods of communication have evolved rapidly in recent years to include social networking. Outline **one** positive impact and **one** negative impact of social networking sites in the engineering sector.

Positive impact

---

---

[1]

Negative impact

---

---

[1]



(c) Describe **two** difficulties a manufacturer might have when trying to implement modern materials and modern technology into a company's production line.

1. \_\_\_\_\_  
\_\_\_\_\_ [2]

2. \_\_\_\_\_  
\_\_\_\_\_ [2]

Examiner Only	
Marks	Remark



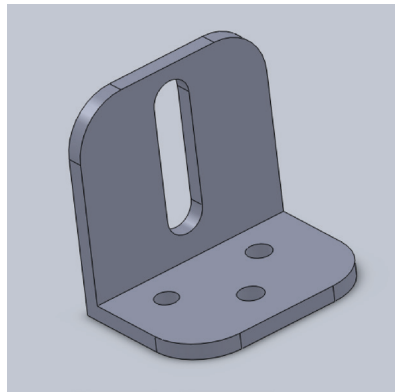
Examiner Only	
Marks	Remark

5 (a) Welding can be hazardous. Give **two** personal safety precautions an engineer should follow when welding.

1. \_\_\_\_\_ [2]

2. \_\_\_\_\_ [2]

(b) The picture below shows a bracket which is used in the assembly of a tumble dryer. Galvanised low carbon steel has been chosen as the preferred material. Suggest a suitable alternative non-ferrous metal that could be used. Explain why you think low carbon steel has been chosen.



Source: Chief Examiner

Alternative non-ferrous metal

\_\_\_\_\_ [1]

Low carbon steel has been chosen because:

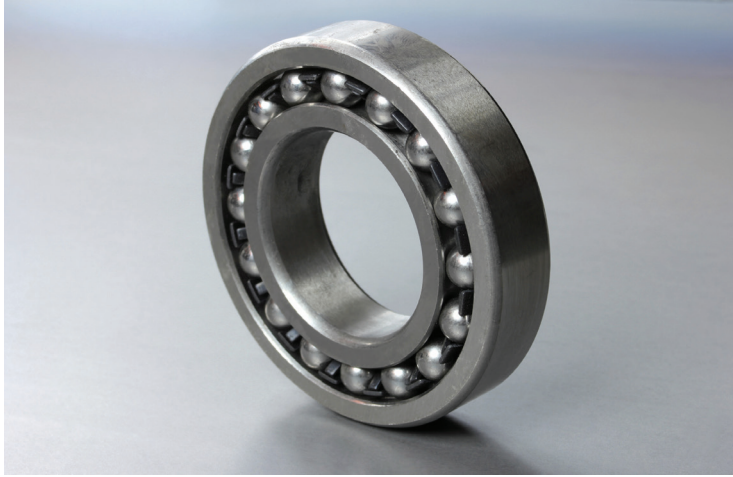
\_\_\_\_\_ [2]

(c) The hole positions on the bracket are critical. Describe, giving **two** examples, how these could be checked quickly and accurately on a production line.

1. \_\_\_\_\_ [2]

2. \_\_\_\_\_ [2]

- 6 Bearings such as the one shown below are commonly used in machines and vehicles.



© Thinkstock

Examiner Only	
Marks	Remark

(a) Outline **two** reasons for using bearings in engineering systems.

1. \_\_\_\_\_ [1]

2. \_\_\_\_\_ [1]

(b) Name **two** lubricants used in machines and vehicles.

1. \_\_\_\_\_ [1]

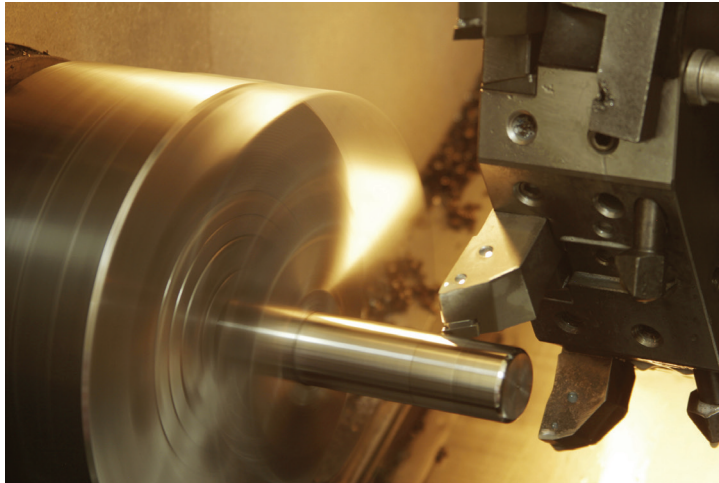
2. \_\_\_\_\_ [1]

(c) Outline **two** reasons why lubrication is important in machining processes in the engineering sector.

1. \_\_\_\_\_ [1]

2. \_\_\_\_\_ [1]

- 7 CAM is used extensively throughout the engineering sector to manufacture products. The picture below shows a CNC lathe turning down a section of steel bar. This is one example of CAM.



© Thinkstock

- (a) Outline **two** benefits for an engineering company of using CAM in their factory.

1. \_\_\_\_\_ [1]

2. \_\_\_\_\_ [1]

- (b) Explain how the use of CAM in product manufacture can ensure fewer faults in the end product.

\_\_\_\_\_  
\_\_\_\_\_  
\_\_\_\_\_ [2]

- (c) Outline **two** ways in which CAM in industry has helped control manufacturing costs.

1. \_\_\_\_\_ [1]

2. \_\_\_\_\_ [1]

Examiner Only	
Marks	Remark

8 (a) Describe how the workforce has been affected with the introduction of new technologies. Give **one** example.

\_\_\_\_\_  
\_\_\_\_\_ [2]

(b) Describe the potential benefit to the environment of using modern technologies when designing and manufacturing engineered products. Give **two** examples.

1. \_\_\_\_\_  
\_\_\_\_\_ [2]

2. \_\_\_\_\_  
\_\_\_\_\_ [2]

(c) Describe **two** cost factors that should be taken into account before introducing modern technologies into an engineering environment.

1. \_\_\_\_\_  
\_\_\_\_\_ [2]

2. \_\_\_\_\_  
\_\_\_\_\_ [2]

Examiner Only	
Marks	Remark

9 The BSI kitemark shown below is a registered certification mark owned and operated by BSI. It is one of the most recognised symbols of quality and safety, and offers true value to customers. It is recognised throughout the world as a mark of quality.



*© “KITEMARK and the BSI Kitemark device are reproduced with the kind permission of The British Standards Institution. They are registered trademarks in the United Kingdom and in certain other countries.”*

**(a)** Describe **one** different quality control check that could be used for each of the engineering processes stated below.

**(i)** Turning of a steel rod

\_\_\_\_\_

\_\_\_\_\_

\_\_\_\_\_ [2]

**(ii)** Surface finishing after milling

\_\_\_\_\_

\_\_\_\_\_

\_\_\_\_\_ [2]

**(iii)** Soldering on a circuit board

\_\_\_\_\_

\_\_\_\_\_

\_\_\_\_\_ [2]

**(b)** Outline **one** reason why quality control should take place during the manufacturing process.

\_\_\_\_\_

\_\_\_\_\_ [2]

Examiner Only	
Marks	Remark

10 The introduction of new technology has brought a number of advantages and disadvantages to the engineering sector.

(a) Describe **two** ways the use of new technology has improved the design and development of products in the engineering sector.

1. \_\_\_\_\_  
\_\_\_\_\_ [2]

2. \_\_\_\_\_  
\_\_\_\_\_ [2]

(b) Discuss the implications of the introduction of new technologies on the assembly and dispatch of engineered products.

\_\_\_\_\_  
\_\_\_\_\_  
\_\_\_\_\_  
\_\_\_\_\_  
\_\_\_\_\_  
\_\_\_\_\_  
\_\_\_\_\_  
\_\_\_\_\_  
\_\_\_\_\_  
\_\_\_\_\_  
\_\_\_\_\_  
\_\_\_\_\_  
\_\_\_\_\_  
\_\_\_\_\_  
\_\_\_\_\_  
\_\_\_\_\_  
\_\_\_\_\_  
\_\_\_\_\_  
\_\_\_\_\_  
\_\_\_\_\_ [6]

---

**THIS IS THE END OF THE QUESTION PAPER**

---

Examiner Only	
Marks	Remark



Permission to reproduce all copyright material has been applied for.  
In some cases, efforts to contact copyright holders may have been unsuccessful and CCEA  
will be happy to rectify any omissions of acknowledgement in future if notified.