



Rewarding Learning

General Certificate of Secondary Education
2013

Geography

Unit 1:
Understanding Our Natural World

Foundation Tier

[GGG11]

TUESDAY 4 JUNE, AFTERNOON

StudentBounty.com

Centre Number

71

Candidate Number



TIME

1 hour 30 minutes.

INSTRUCTIONS TO CANDIDATES

Write your Centre Number and Candidate Number in the spaces provided at the top of this page.
Write your answers in the spaces provided in this question paper.
Answer **all three** questions.

INFORMATION FOR CANDIDATES

The total mark for this paper is 108.
Figures in brackets printed down the right-hand side of pages indicate the marks awarded to each question or part question.
Quality of written communication will be assessed in Question **3(d)(ii)**.
Spelling, punctuation and the accurate use of grammar will be assessed in questions **1(d)** and **1(f)(ii)**.



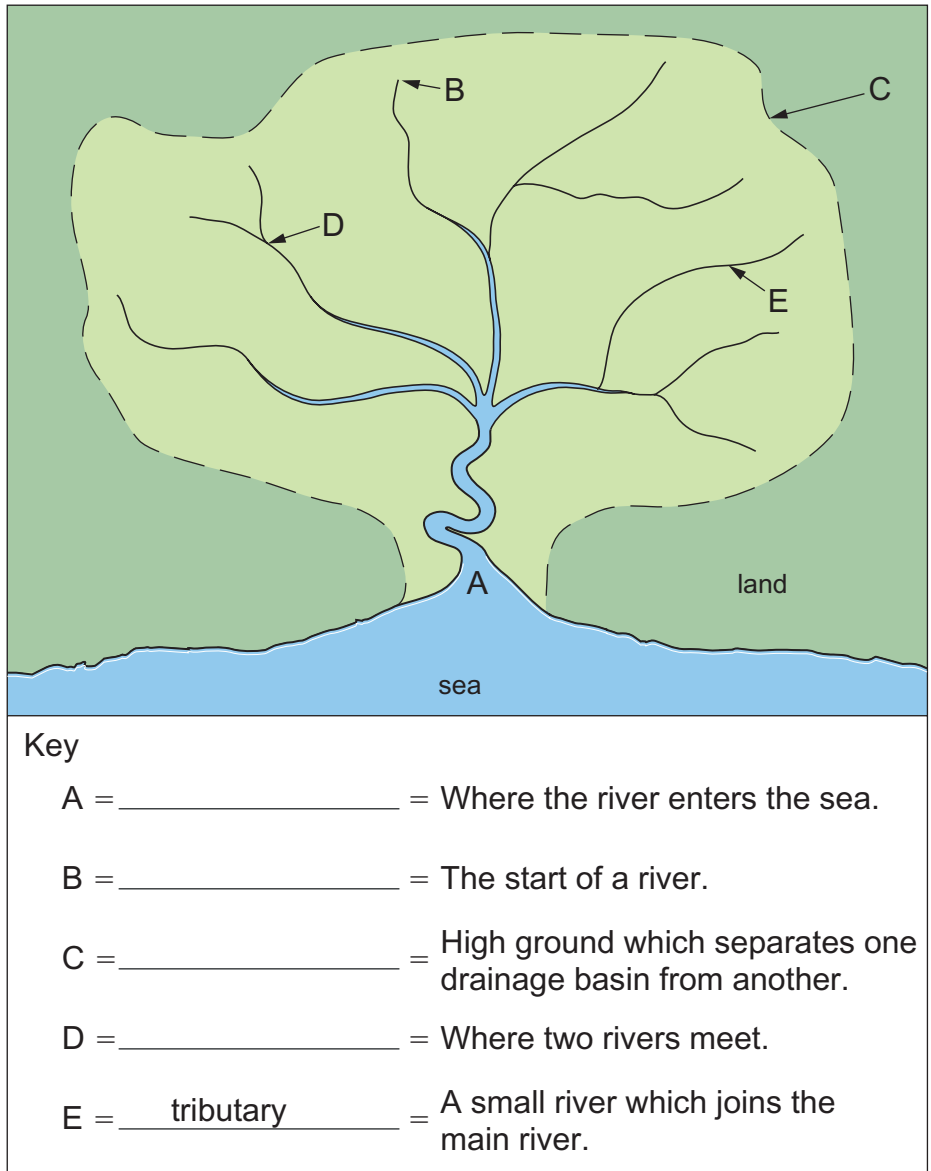
7936.06R

For Examiner's use only	
Question Number	Marks
1	
2	
3	
Total Marks	

Theme A: The Dynamic Landscape

Examiner Only	
Marks	Remark

- 1 (a) Study **Fig. 1** which shows a drainage basin. Answer the questions which follow.



Source: Principal Examiner

Fig. 1

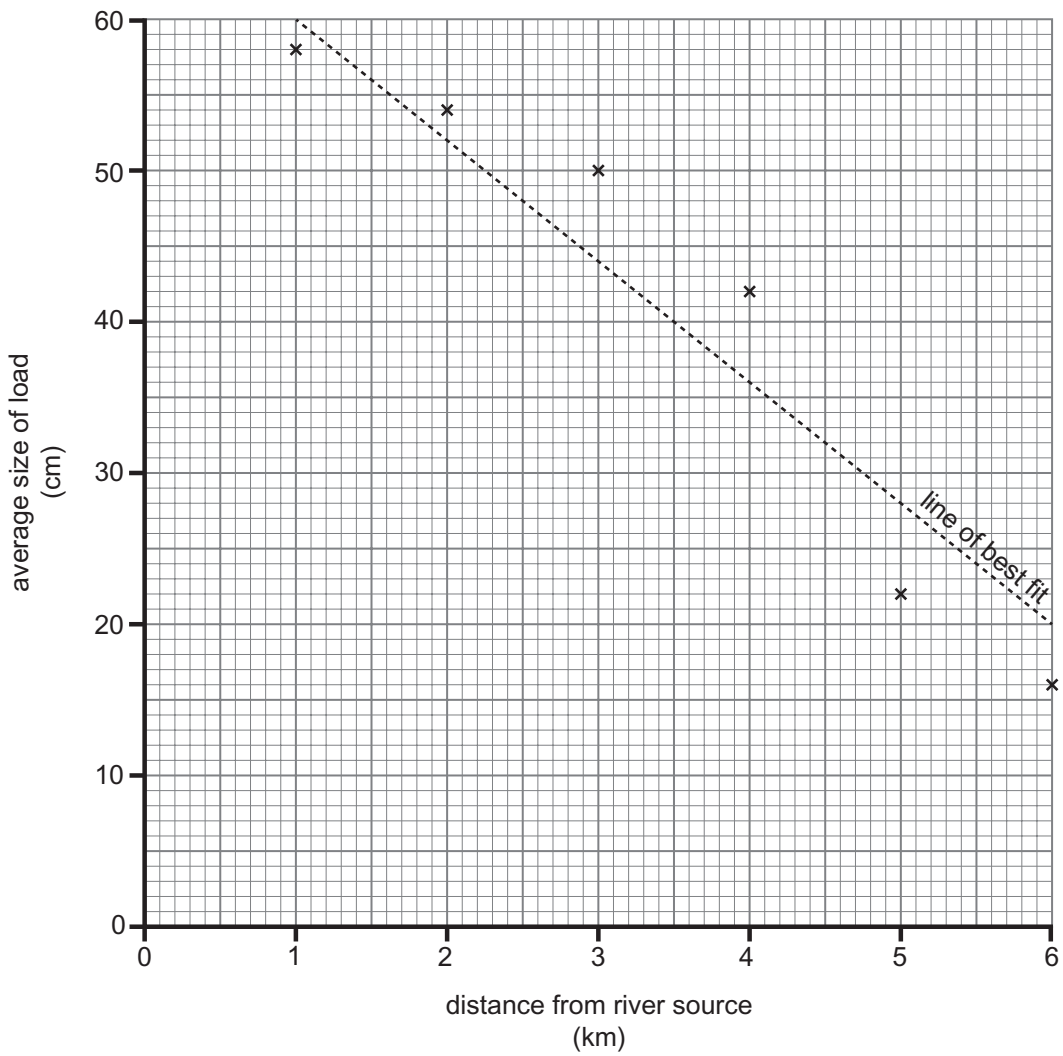
- (i) Complete the key for **Fig. 1** by labelling features A–D. Choose your answers from the list below. One has been completed for you.

flooding confluence watershed
mouth source

[4]

(c) Study **Fig. 2** which shows how load size varies along the Colin River in Belfast. Answer the questions which follow.

Examiner Only	
Marks	Remark



Source: Principal Examiner

Fig. 2

(e) Coasts are shaped by waves. Underline the **two** main types of wave in the list below.

Open Destructive Constructive Flat [2]

Examiner Only	
Marks	Remark

(f) Study **Fig. 3** which shows a labelled photograph of a coastal spit in Alaska called Homer Spit. Answer the questions which follow.



Source: Alaska ShoreZone Program NOAA/NMFS/AKFSC; Courtesy of Mandy Lindeberg, NOAA/NMFS/AKFSC

Fig. 3

(i) Identify the three land uses (**X**, **Y** and **Z**) shown in **Fig. 3**. Choose your answers from the list below.

Residential Industry Transport Tourism

X _____

Y _____

Z _____

[3]

--	--

(ii) Explain how longshore drift forms a spit.

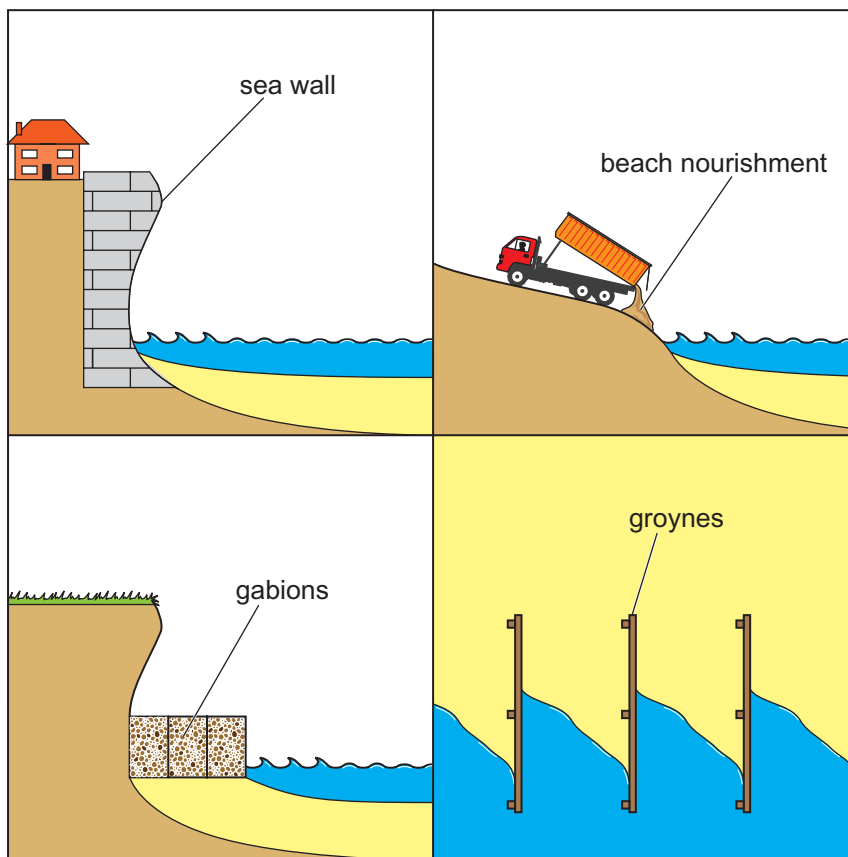
[5]

Spelling, punctuation and accurate use of grammar [4]

Examiner Only	
Marks	Remark

(g) Study **Fig. 4** which shows four methods of coastal defence. Answer the questions which follow.

Examiner Only	
Marks	Remark



Source: Principal Examiner

Fig. 4

(i) Choose **two** of the coastal defences named in **Fig. 4** and explain how each works.

1. _____

 _____ [3]

2. _____

 _____ [3]

Theme B: Our Changing Weather and Climate

Examiner Only	
Marks	Remark

2 (a) Study **Fig. 5** which shows a simple weather forecast about an anticyclone that is over Northern Ireland in July. Answer the questions which follow.

(i) Draw a line to match up each element of the weather forecast in **Fig. 5** with one instrument used to create that part of the forecast.

Weather Forecast		Instruments used to create this forecast
The temperature will be a very warm 28°C.	•	• WIND VANE
The wind speed will be calm.	•	• THERMOMETER
Warm air will come from a south-easterly direction.	•	• ANEMOMETER
There will be no rain.	•	• RAIN GAUGE

Fig. 5

[4]

(ii) Name **one** other aspect of the weather which can be measured.

_____ [1]

(iii) Underline the air mass which is likely to be responsible for the weather described in **Fig. 5**.

POLAR CONTINENTAL TROPICAL CONTINENTAL

POLAR MARITIME [1]

(c) Study **Fig. 6** which shows some cities where international agreements on climate change have been discussed. Answer the questions which follow.



Fig. 6

(i) Using **Fig. 6** state the city where the 2011 international agreement on climate change was discussed.

_____ [1]

(ii) Why is it difficult for countries to work together to deal with climate change? You should give **two** reasons in your answer.

_____ [4]

Examiner Only	
Marks	Remark

Theme C: The Restless Earth

Examiner Only	
Marks	Remark

3 (a) Study **Fig. 7** which shows some rock types. Answer the questions which follow.

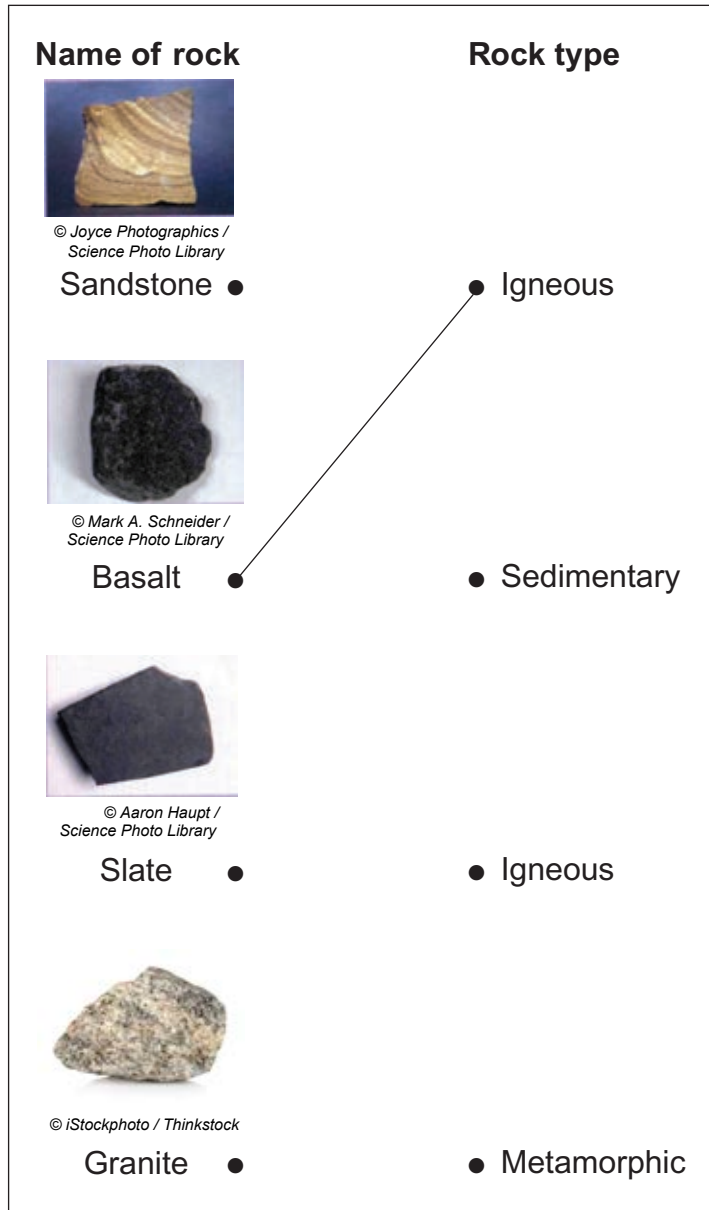


Fig. 7

(i) Complete **Fig. 7** by drawing lines to link the name of each rock to its rock type. One has been completed for you. [3]

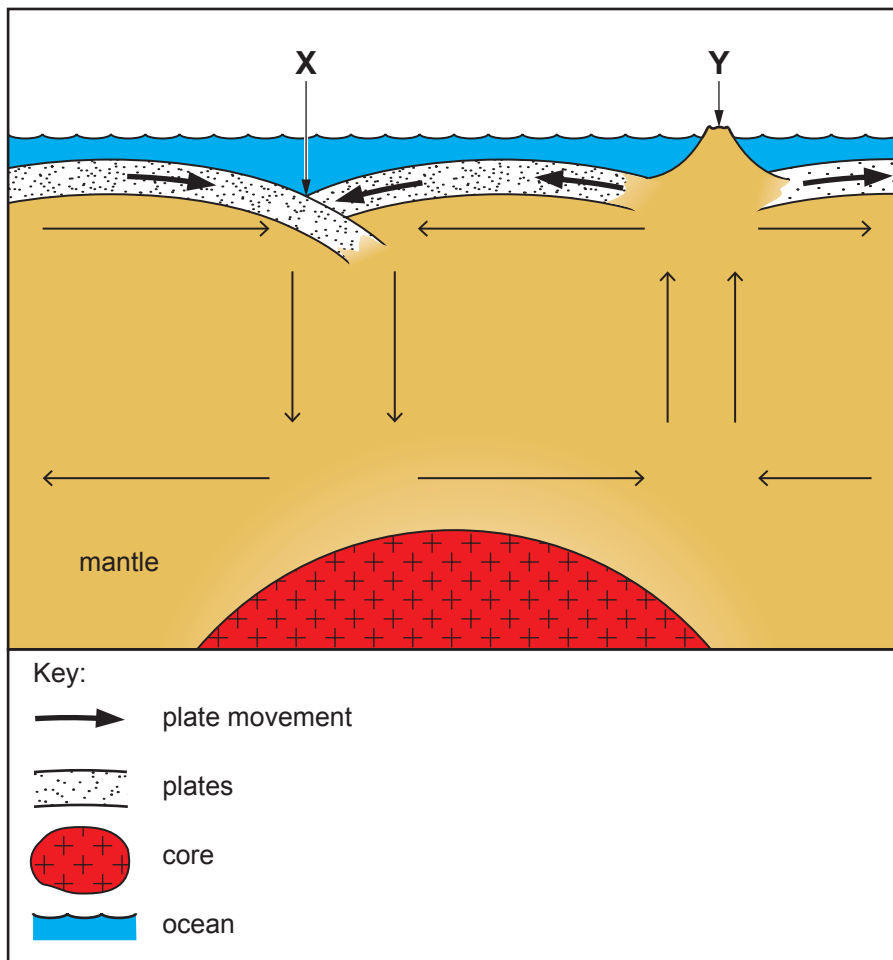
- (ii) Number the following statements (1 to 4) in the correct order to explain how basalt is formed. One has been completed for you.

The lava hardens to form Basalt.	
The lava cools quickly and makes small crystals.	
Molten magma rises from the mantle.	
The magma flows out onto the surface as lava.	2

[3]

Examiner Only	
Marks	Remark

(b) Study **Fig. 8** which shows part of the earth's structure. Answer the questions which follow.



Source: Principal Examiner

Fig. 8

(i) Name the features **X** and **Y**.

X _____

Y _____

[2]

(ii) Use **Fig. 8** to help explain how plates move.

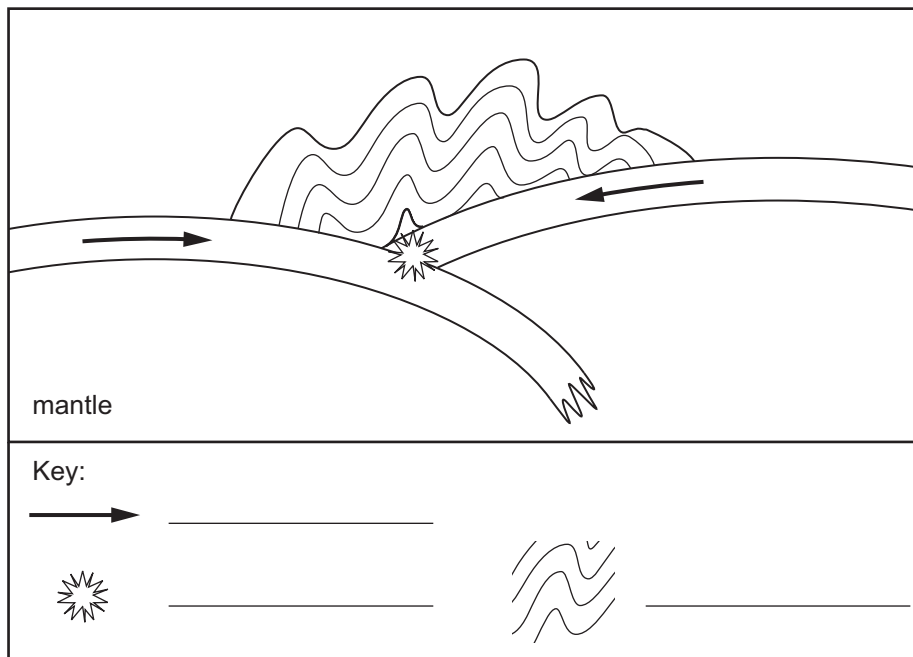
[3]

Examiner Only	
Marks	Remark

(c) Study **Fig. 9** which shows how fold mountains such as the Himalayas form. Answer the question which follows.



© iStockphoto / Thinkstock



Source: Principal Examiner

Fig. 9

Use the following labels to complete the key on **Fig. 9** to show how fold mountains are formed.

Plate movement Fold mountains Earthquake focus [3]

Examiner Only	
Marks	Remark

BLANK PAGE
(Questions continue overleaf)

(e) Study **Fig. 11** which shows some measures which may be put in place to reduce the number of deaths in an earthquake in a MEDC. Answer the question which follows.



© moodboard / Thinkstock

Make buildings earthquake-proof



© VSTEP - RescueSim

Plan better emergency services

Image removed due to copyright restrictions

Educate people about what to do when an earthquake happens



© Professor Tullis

Improve the prediction of earthquakes

Fig. 11

Permission to reproduce all copyright material has been applied for.
In some cases, efforts to contact copyright holders may have been unsuccessful and CCEA
will be happy to rectify any omissions of acknowledgement in future if notified.