

MARK SCHEME for the October/November 2008 question paper

9713 APPLIED ICT

9713/02

Paper 2 (Practical Test A), maximum raw mark 120

This mark scheme is published as an aid to teachers and candidates, to indicate the requirements of the examination. It shows the basis on which Examiners were instructed to award marks. It does not indicate the details of the discussions that took place at an Examiners' meeting before marking began.

All Examiners are instructed that alternative correct answers and unexpected approaches in candidates' scripts must be given marks that fairly reflect the relevant knowledge and skills demonstrated.

Mark schemes must be read in conjunction with the question papers and the report on the examination.

- CIE will not enter into discussions or correspondence in connection with these mark schemes.

CIE is publishing the mark schemes for the October/November 2008 question papers for most IGCSE, GCE Advanced Level and Advanced Subsidiary Level syllabuses and some Ordinary Level syllabuses.

Page 2	Mark Scheme	Syllabus
	GCE A/AS LEVEL – October/November 2008	9713

No marks to be awarded for any printout not containing the candidate name, candidate number and Centre number

Step 3

Candidate name, Centre number and candidate number

N8EMPLOY : Table		
	Field Name	Data Type
	PayNumber	Text
	Fname	Text
	Sname	Text
	BranchCode	Number
	JobCode	Number

Table created
 Correct fields
 3 text fields
 2 number fields
 Primary key correct

1 mark
 1 mark
 1 mark
 1 mark

Microsoft Access - [N8JOB : Table]		
	Field Name	Data Type
	Job	Number
	Description	Text
	Rate	Number

Table created
 Correct fields & field types
 Primary key correct

1 mark
 1 mark

Microsoft Access - [N8QUAL : Table]		
	Field Name	Data Type
	Code	Number
	Qualification	Text
	Weighting	Number

Table created
 Correct fields & field types
 Primary key correct

1 mark
 1 mark

Page 3	Mark Scheme	Syllabus
	GCE A/AS LEVEL – October/November 2008	9713

Step 5

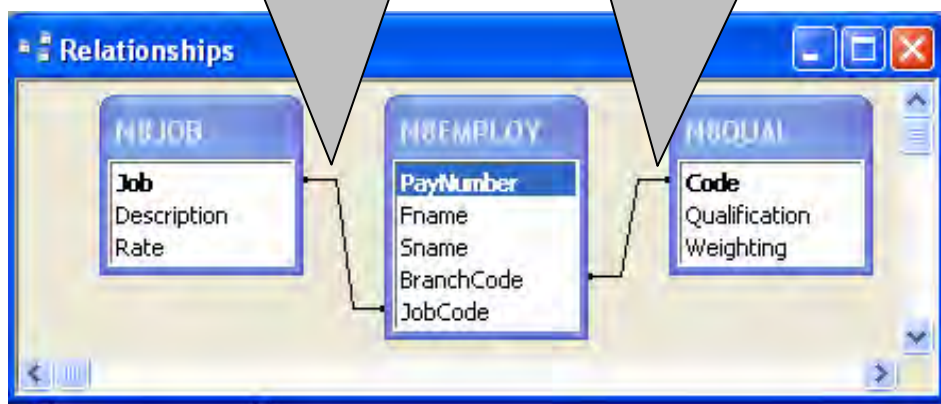
Candidate name, Centre number and candidate number

Relationship, correct fields

1 mark

Relationship, correct fields

1 mark



Edit Relationships

Table/Query: N8QUAL
Related Table/Query: N8EMPLOY

Code BranchCode

☐ Enforce Referential Integrity

☐ Cascade Update Related Fields

☐ Cascade Delete Related Records

Relationship Type: One-To-Many

OK
Cancel
Create New...

Relationship, correct type

1 mark

Edit Relationships

Table/Query: N8JOB
Related Table/Query: N8EMPLOY

Job JobCode

☒ Enforce Referential Integrity

☐ Cascade Update Related Fields

☐ Cascade Delete Related Records

Relationship Type: One-To-Many

OK
Cancel
Join Type..
Create New...

Relationship, correct type

1 mark

Page 4	Mark Scheme	Syllabus
	GCE A/AS LEVEL – October/November 2008	9713

Step 7

Candidate name, Centre number and candidate number

In header

List of managers

Title 100% correct 1 mark

Qualification	Description	Fname	Sname
ADHM	Sales Manager	Ritu	Liu
AHM	Restaurant Manager	Shruti	Di Vizio
AHM	Human Resources Manager	Adheesh	Agrawal
AHM	IS Manager	Arjeet	Ravi
HCAT	Kids Club Manager	Keshav	Shoaib
HCAT	Housekeeping Manager	Kratika	Gupta
NVQ L1	Shop Manager	Nripesh	Ratwani
NVQ L1	Entertainment Manager	Nedeem	Nainani
NVQ L1	Assistant Manager	Mohamed	Surit
NVQ L2	Assistant Sales Manager	Ahmed	Malviya
NVQ L3	Assistant Restaurant Manager	Siddharth	Khan
NVQ L3	Catering Manager	Siddharth	Afana
NVQ L4	General Manager	Siddharth	Gad

Wildcard search on Manager 2 marks
 No marks unless correct wildcard search
 Sorted ascending on qualification 1 mark
 Correct 4 fields only & fully visible 1 mark

Page 5	Mark Scheme	Syllabus
	GCE A/AS LEVEL – October/November 2008	9713

Step 10

Candidate name, Centre number and candidate number

In header 1 mark

Selection criteria
 NVQ L1, NVQ L2, NVQ L3 or NVQ L4 2 marks
 Column headings
 Qualification names 1 mark

Number of NVQ qualifications

Title 100% correct 1 mark

Description	NVQ L1	NVQ L2	NVQ L3	NVQ L4
Assistant Manager	1			
Assistant Restaurant Manager			1	
Assistant Sales Manager		1		
Catering Manager			1	
Chef	1			
Company Secretary		1		
Entertainer	11			
Entertainment Manager	1			
Financial Director	1	2		
Gardener	2			
General Manager				1
Housekeeping	1		1	
IS Technician			1	
Lifeguard	3			
Maintenance	2	2		
Maintenance Supervisor		1		
Porter	1			
Receptionist		1		
Retail Salesperson	3			
Sales Assistant		8		
Security	1			
Shop Manager	1			
Temporary staff	1			

Cross tab
 Created 2 marks
 Values as shown 2 marks
 Row headings
 Descriptions 1 mark

Page 6	Mark Scheme	Syllabus	Paper
	GCE A/AS LEVEL – October/November 2008	9713	02

Step 18

Rates of pay for catering employees

Title 100% correct 1 mark

Pay Field
Calculated at run time 2 marks
Rate x weighting (figures as shown) 2 marks

Qualification	PayNumber	Fname	Sname	Description	Pay
AHM					
	TB0070	Ankur	Pavia	Catering Assistant	33600
	TB0028	Sagar	Gupta	Assistant Chef	96621
	TB0023	Shruti	Di Vizio	Restaurant Manager	108150
	TB0006	Mohammed	Amen	Chef	111615
	TB0005	Ruksana	Akhtar	Catering Assistant	33600
	TB0004	Chantal	Ahmad	Souffle Chef	94710
Summary for 'Qualification' = AHM (6 detail records)					
Sum					478296
DHM					
	TB0010	Shashank	Ashwani	Chef	143505
Summary for 'Qualification' = DHM (1 detail record)					
Sum					143505
NVQ L1					
	TB0017	Majid	Chauhan	Chef	116930
Summary for 'Qualification' = NVQ L1 (1 detail record)					
Sum					116930
NVQ L3					
	TB0044	Siddharth	Khan	Assistant Restaurant	103068
	TB0001	Siddharth	Afana	Catering Manager	173600
Summary for 'Qualification' = NVQ L3 (2 detail records)					
Sum					276668
Grand Total					1015399

By A Candidate, Candidate 99999, Centre XX999

Selection criteria
JobCode >53 & <80 (these jobs only) 2 marks
Fields
Only these 6 fields shown 1 mark
Grouping
Grouped by qualification 2 marks
Group footer – correct subtotal 2 marks
Report footer
Name, centre no, candidate number 1 mark
Calculated control for sum (correct) 2 marks

Page 7	Mark Scheme	Syllabus	Paper
	GCE A/AS LEVEL – October/November 2008	9713	02

Step 20

Title 100% correct 1 mark

Catering employees summary

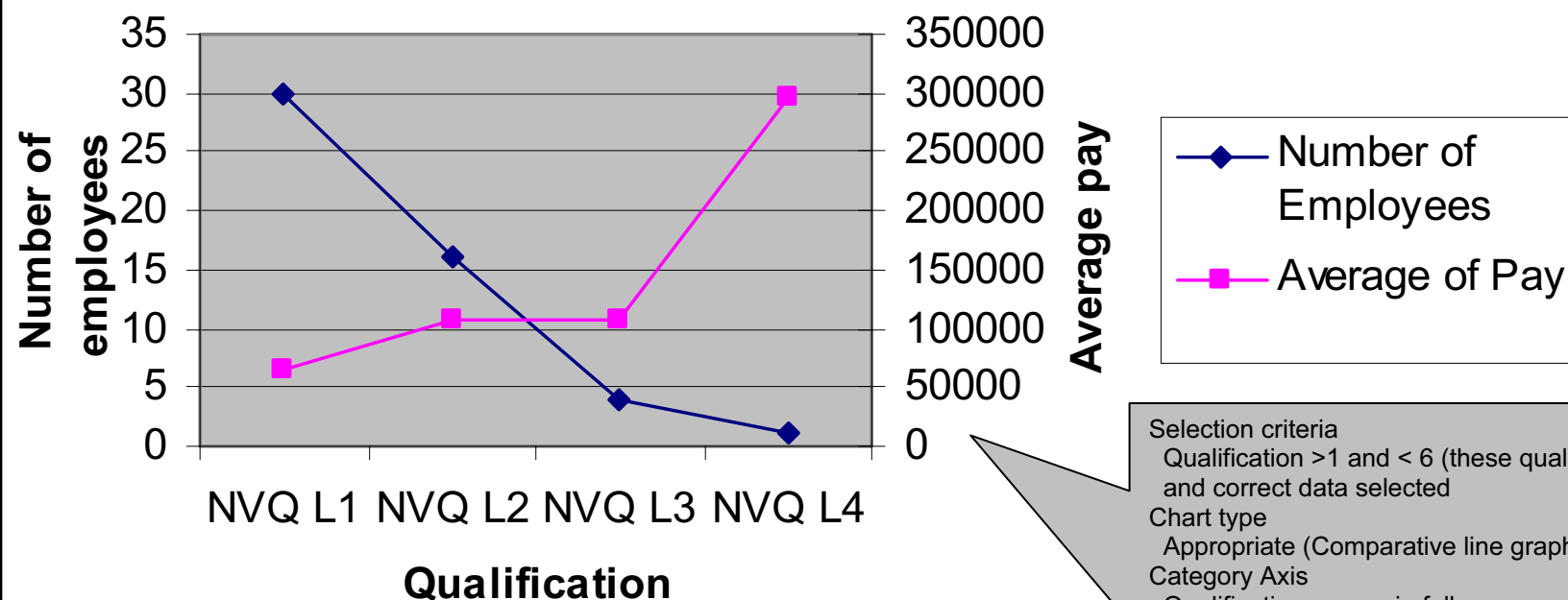
Qualification	PayNumber	Fname	Sname	Description	Pay
AHM	TB0070			Catering Assistant	
	TB0028			Assistant Chef	
	TB0023			Restaurant Manager	
	TB0006			Chef	
	TB0005			Catering Assistant	
	TB0004			Souffle Chef	
Summary for 'Qualification' = AHM (6 detail records)					
Sum					478296
DHM	TB0010			Chef	
Summary for 'Qualification' = DHM (1 detail record)					
Sum					143505
NVQ L1	TB0017			Chef	
Summary for 'Qualification' = NVQ L1 (1 detail record)					
Sum					116930
NVQ L3	TB0044			Assistant Restaurant Manage	
	TB0001			Catering Manager	
Summary for 'Qualification' = NVQ L3 (2 detail records)					
Sum					276668
Grand Total					1015399

Page 8	Mark Scheme	Syllabus	Paper
	GCE A/AS LEVEL – October/November 2008	9713	02

Step 23

Candidate name, Centre number and candidate number

Number of employees and average of pay



- Selection criteria
- Qualification >1 and < 6 (these qualifications only) and correct data selected 2 marks
 - Chart type
 - Appropriate (Comparative line graph) 2 marks
 - Category Axis
 - Qualification names in full 1 mark
 - Meaningful & appropriate axis label 1 mark
 - Value Axes
 - 2 axes shown 1 mark
 - Meaningful & appropriate axis labels 2 marks
 - Chart Title
 - Meaningful & appropriate chart title 1 mark
 - Title of appropriate size 1 mark
- 2 marks

Page 9	Mark Scheme	Syllabus	Paper
	GCE A/AS LEVEL – October/November 2008	9713	02

Step 36

Rooms requiring a fridge

Title 100% correct 1 mark

Search Fridge = 0 2 marks

Formatting
 Row 7 and column A – centre 1 mark
 Row 7 and column A – bold and italic 1 mark
 Last 4 columns Sri Lanka rupees 1 mark
 2 dp 1 mark

Single	42
Double	80
Both	41
Fridge	3
Television	2

Room	Code	Guest	Basic	Fridge	Television	Total
109	2DNNNPNA	2	LKR 160.00	LKR 0.00	LKR 0.00	LKR 160.00
110	2DNNNPNA	2	LKR 160.00	LKR 0.00	LKR 0.00	LKR 160.00
114	3DNTNNNA	3	LKR 240.00	LKR 0.00	LKR 2.00	LKR 242.00
115	3DNTNNNA	3	LKR 240.00	LKR 0.00	LKR 2.00	LKR 242.00
118	3DNTNNNA	3	LKR 240.00	LKR 0.00	LKR 2.00	LKR 242.00
207	2DNTNPNA	2	LKR 160.00	LKR 0.00	LKR 2.00	LKR 162.00
209	2DNNNPNA	2	LKR 160.00	LKR 0.00	LKR 0.00	LKR 160.00
210	2DNNNPNA	2	LKR 160.00	LKR 0.00	LKR 0.00	LKR 160.00
305	2DNTNSNA	2	LKR 160.00	LKR 0.00	LKR 2.00	LKR 162.00
309	2DNNNPNA	2	LKR 160.00	LKR 0.00	LKR 0.00	LKR 160.00
310	2DNNNPNA	2	LKR 160.00	LKR 0.00	LKR 0.00	LKR 160.00
317	3DNTNNNA	3	LKR 240.00	LKR 0.00	LKR 2.00	LKR 242.00
409	2DNNNPNA	2	LKR 160.00	LKR 0.00	LKR 0.00	LKR 160.00
410	2DNNNPNA	2	LKR 160.00	LKR 0.00	LKR 0.00	LKR 160.00
512	4BNTBNA	4	LKR 164.00	LKR 0.00	LKR 2.00	LKR 166.00

Single page 1 mark
 All visible 1 mark

Candidate name, Centre number and candidate number

In footer 1 mark

Page 10	Mark Scheme	Syllabus	Paper
	GCE A/AS LEVEL – October/November 2008	9713	02

Step 38

Formulae Used

Title 100% correct 1 mark

	A	B	C	D
1	Single	42		
2	Double	80		
3	Both	41		
4	Fridge	3		
5	Television	2		
6				
7	Room	Code	Guest	Basic
16	109	2DNNNPNA	=VALUE(MID(B16,1,1))	=IF(MID(B16,2,1)="D",DBL*C16,IF(MID(B16,2,1)="S",SGL*C16,IF(MID(B16,2,1)="B",BTH*C16,0)))
17	110	2DNNNPNA	=VALUE(MID(B17,1,1))	=IF(MID(B17,2,1)="D",DBL*C17,IF(MID(B17,2,1)="S",SGL*C17,IF(MID(B17,2,1)="B",BTH*C17,0)))
21	114	3DNTNNA	=VALUE(MID(B21,1,1))	=IF(MID(B21,2,1)="D",DBL*C21,IF(MID(B21,2,1)="S",SGL*C21,IF(MID(B21,2,1)="B",BTH*C21,0)))
22	115	3DNTNNA	=VALUE(MID(B22,1,1))	=IF(MID(B22,2,1)="D",DBL*C22,IF(MID(B22,2,1)="S",SGL*C22,IF(MID(B22,2,1)="B",BTH*C22,0)))
25	118	3DNTNNA	=VALUE(MID(B25,1,1))	=IF(MID(B25,2,1)="D",DBL*C25,IF(MID(B25,2,1)="S",SGL*C25,IF(MID(B25,2,1)="B",BTH*C25,0)))
32	207	2DNTNPNA	=VALUE(MID(B32,1,1))	=IF(MID(B32,2,1)="D",DBL*C32,IF(MID(B32,2,1)="S",SGL*C32,IF(MID(B32,2,1)="B",BTH*C32,0)))
34	209	2DNNNPNA	=VALUE(MID(B34,1,1))	=IF(MID(B34,2,1)="D",DBL*C34,IF(MID(B34,2,1)="S",SGL*C34,IF(MID(B34,2,1)="B",BTH*C34,0)))
35	210	2DNNNPNA	=VALUE(MID(B35,1,1))	=IF(MID(B35,2,1)="D",DBL*C35,IF(MID(B35,2,1)="S",SGL*C35,IF(MID(B35,2,1)="B",BTH*C35,0)))
48	305	2DNTNSNA	=VALUE(MID(B48,1,1))	=IF(MID(B48,2,1)="D",DBL*C48,IF(MID(B48,2,1)="S",SGL*C48,IF(MID(B48,2,1)="B",BTH*C48,0)))
52	309	2DNNNPNA	=VALUE(MID(B52,1,1))	=IF(MID(B52,2,1)="D",DBL*C52,IF(MID(B52,2,1)="S",SGL*C52,IF(MID(B52,2,1)="B",BTH*C52,0)))
53	310	2DNNNPNA	=VALUE(MID(B53,1,1))	=IF(MID(B53,2,1)="D",DBL*C53,IF(MID(B53,2,1)="S",SGL*C53,IF(MID(B53,2,1)="B",BTH*C53,0)))
60	317	3DNTNNA	=VALUE(MID(B60,1,1))	=IF(MID(B60,2,1)="D",DBL*C60,IF(MID(B60,2,1)="S",SGL*C60,IF(MID(B60,2,1)="B",BTH*C60,0)))
70	409	2DNNNPNA	=VALUE(MID(B70,1,1))	=IF(MID(B70,2,1)="D",DBL*C70,IF(MID(B70,2,1)="S",SGL*C70,IF(MID(B70,2,1)="B",BTH*C70,0)))
71	410	2DNNNPNA	=VALUE(MID(B71,1,1))	=IF(MID(B71,2,1)="D",DBL*C71,IF(MID(B71,2,1)="S",SGL*C71,IF(MID(B71,2,1)="B",BTH*C71,0)))
91	512	4BNTBNA	=VALUE(MID(B91,1,1))	=IF(MID(B91,2,1)="D",DBL*C91,IF(MID(B91,2,1)="S",SGL*C91,IF(MID(B91,2,1)="B",BTH*C91,0)))

Guest
Mid or left function used 1 mark
Correct cell reference 1 mark
First position in string 1 mark
1 character extraction 1 mark
Turned into a numeric value 1 mark

Basic
Mid function used 1 mark
Correct cell reference 1 mark
Second position in string 1 mark
1 character extraction 1 mark
Nested IF (or appropriate alternative) 2 marks
D and correct formulae (works) 1 mark
S and correct formulae (works) 1 mark
B and correct formulae (works) 1 mark
Any other returns 0 1 mark
All 3 cells correct for column B reference (Allow named range) 1 mark
All 3 cells correct for column C reference (Allow named range) 1 mark
Correct named cells 3 marks

Candidate name, Centre number and candidate number

Page 11	Mark Scheme	Syllabus	Paper
	GCE A/AS LEVEL – October/November 2008	9713	02

Fridge		Television		Total Correct addition	1 mark
Mid function used	1 mark	Mid function used	1 mark		
Correct cell reference	1 mark	Correct cell reference	1 mark		
Third position in string	1 mark	4th position in string	1 mark		
1 character extraction	1 mark	1 character extraction	1 mark		
IF "F" then correct return	1 mark	IF "T" then correct return	1 mark		
Correct named cell	1 mark	Correct named cell	1 mark		
Any other returns 0	1 mark	Any other returns 0	1 mark		
5					
6					
7	Fridge	Television	Total		
16	=IF(MID(B16,3,1)="F",FR,0)	=IF(MID(B16,4,1)="T",TV,0)	=D16+E16+F16		
17	=IF(MID(B17,3,1)="F",FR,0)	=IF(MID(B17,4,1)="T",TV,0)	=D17+E17+F17		
21	=IF(MID(B21,3,1)="F",FR,0)	=IF(MID(B21,4,1)="T",TV,0)	=D21+E21+F21		
22	=IF(MID(B22,3,1)="F",FR,0)	=IF(MID(B22,4,1)="T",TV,0)	=D22+E22+F22		
25	=IF(MID(B25,3,1)="F",FR,0)	=IF(MID(B25,4,1)="T",TV,0)	=D25+E25+F25		
32	=IF(MID(B32,3,1)="F",FR,0)	=IF(MID(B32,4,1)="T",TV,0)	=D32+E32+F32		
34	=IF(MID(B34,3,1)="F",FR,0)	=IF(MID(B34,4,1)="T",TV,0)	=D34+E34+F34		
35	=IF(MID(B35,3,1)="F",FR,0)	=IF(MID(B35,4,1)="T",TV,0)	=D35+E35+F35		
48	=IF(MID(B48,3,1)="F",FR,0)	=IF(MID(B48,4,1)="T",TV,0)	=D48+E48+F48		
52	=IF(MID(B52,3,1)="F",FR,0)	=IF(MID(B52,4,1)="T",TV,0)	=D52+E52+F52		
53	=IF(MID(B53,3,1)="F",FR,0)	=IF(MID(B53,4,1)="T",TV,0)	=D53+E53+F53		
60	=IF(MID(B60,3,1)="F",FR,0)	=IF(MID(B60,4,1)="T",TV,0)	=D60+E60+F60		
70	=IF(MID(B70,3,1)="F",FR,0)	=IF(MID(B70,4,1)="T",TV,0)	=D70+E70+F70		
71	=IF(MID(B71,3,1)="F",FR,0)	=IF(MID(B71,4,1)="T",TV,0)	=D71+E71+F71		
91	=IF(MID(B91,3,1)="F",FR,0)	=IF(MID(B91,4,1)="T",TV,0)	=D91+E91+F91		

Replication
Correct replication 1 mark
All formulae fully visible 1 mark
All labels fully visible 1 mark

Row and column headings visible 1 mark
Landscape orientation 1 mark

Candidate name, Centre number and candidate number

Page 12	Mark Scheme	Syllabus	Paper
	GCE A/AS LEVEL – October/November 2008	9713	02

Step 40

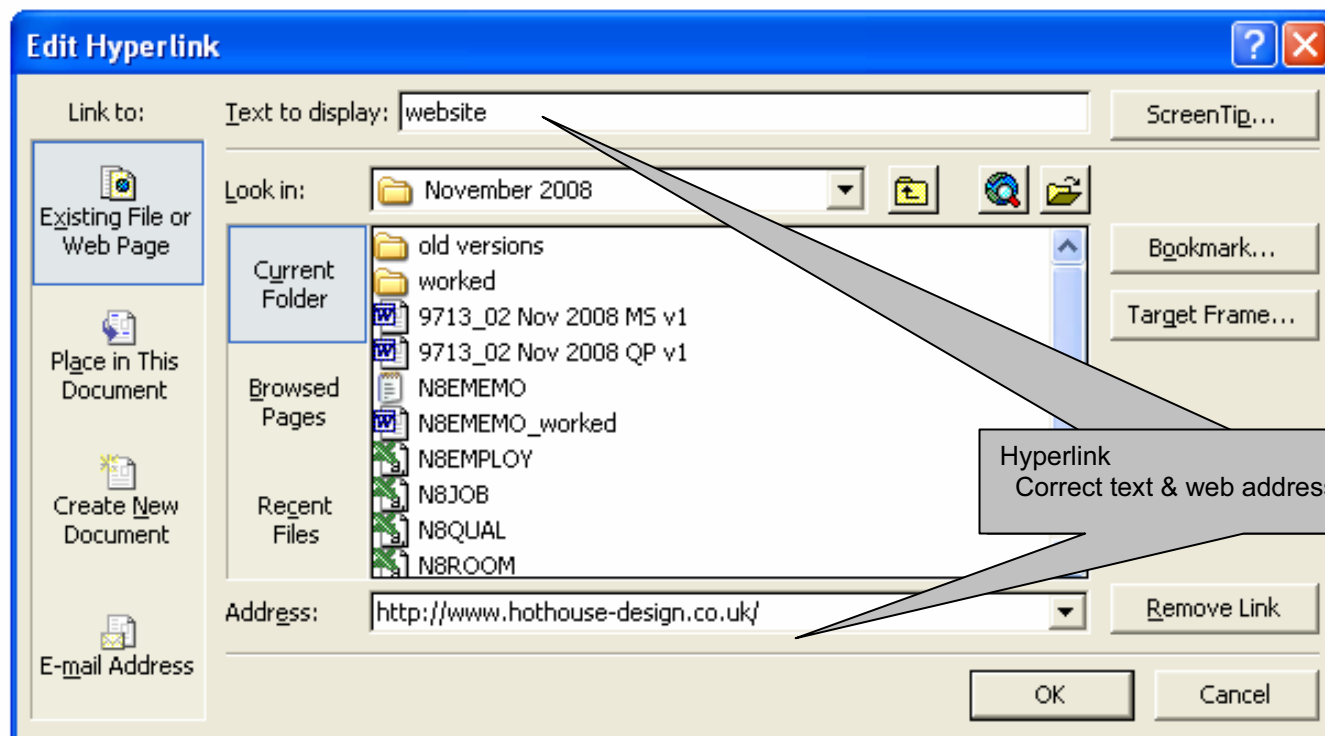
This document is a test document to show each of you the versatility of using hyperlinks within internal documents to point to a variety of places on our website.
The website that we have selected for this test belongs to one of our service providers called Hothouse Design.

Click on this link to access their [website](#).

Click on this link to access their [contact details](#).

Click on this link to [e-mail](#) them.

Candidate name, centre number and candidate number



Page 13	Mark Scheme	Syllabus	Paper
	GCE A/AS LEVEL – October/November 2008	9713	02

Step 41

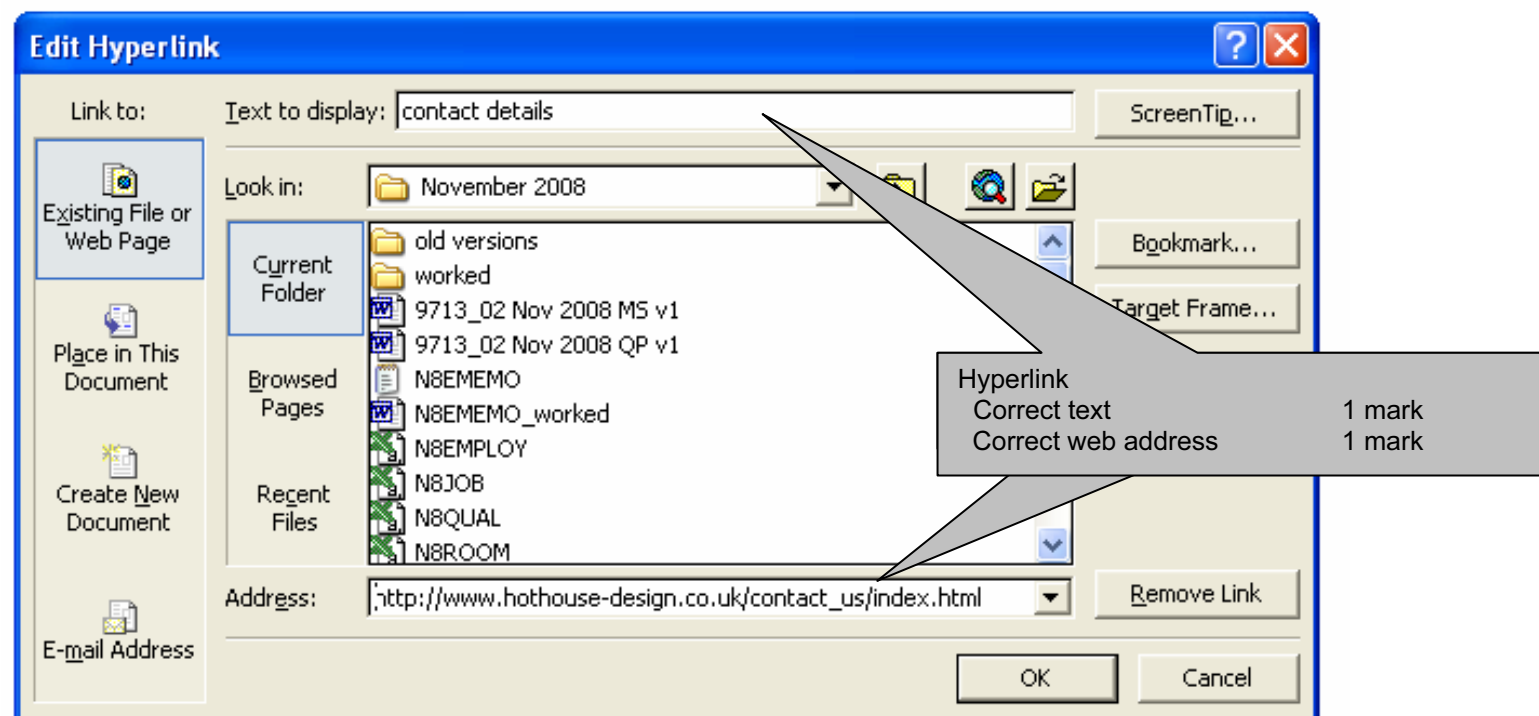
This document is a test document to show each of you the versatility of using hyperlinks within internal documents to point to a variety of places on our website. The website that we have selected for this test belongs to one of our service providers called Hothouse Design.

Click on this link to access their [website](#).

Click on this link to access their [contact details](#).

Click on this link to [e-mail](#) them.

Candidate name, centre number and candidate number



Page 14	Mark Scheme	Syllabus	Paper
	GCE A/AS LEVEL – October/November 2008	9713	02

Step 42

This document is a test document to show each of you the versatility of using hyperlinks within internal documents to point to a variety of places on our website. The website that we have selected for this test belongs to one of our service providers called Hothouse Design.

Click on this link to access their [website](#).

Click on this link to access their [contact details](#).

Click on this link to [e-mail](#) them.

Candidate name, centre number and candidate number

Hyperlink
Correct text 1 mark
Correct e-mail address 1 mark
Correct subject line 1 mark