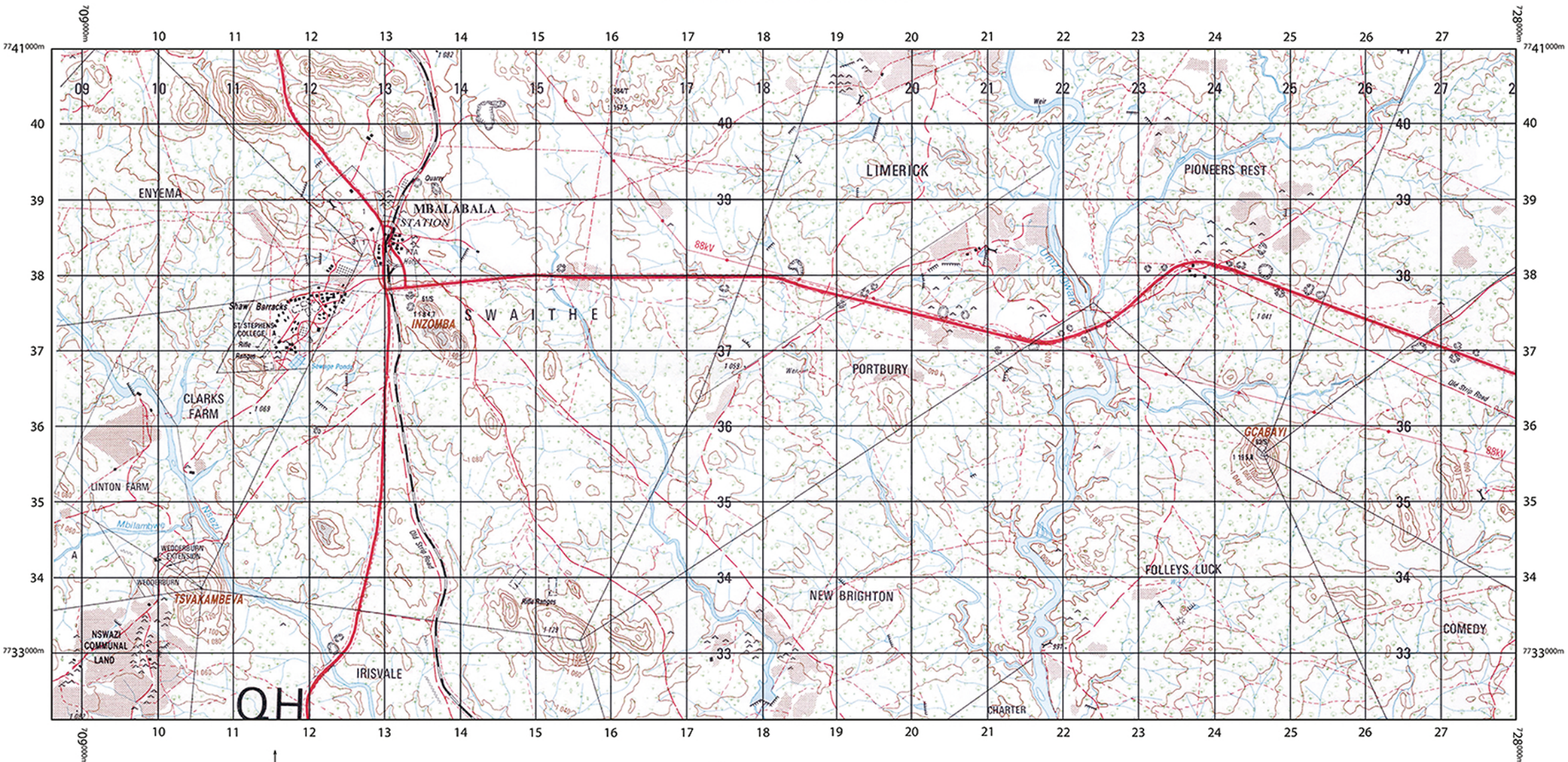


Survey Map

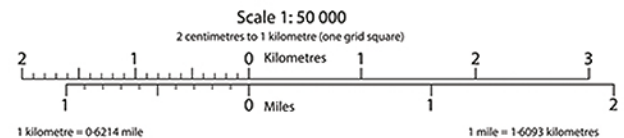
Please be aware, that in order to preserve the scale the map, if printed, should be printed in colour onto A3 paper.



Four colours should appear above; if not then please return to the invigilator.
Four colours should appear above; if not then please return to the invigilator.



O.H.



Please note: The scale of this map has been reduced

Map and Legend scanned from previously printed copy.
Quality will not match mapping printed directly from source data.

Compiled by Stereoplotter from Air Photography dated 1971.
Revised from Air Photography dated 1980.

Published by the Surveyor-General, Zimbabwe 1983.
Copyright reserved by the Government of Zimbabwe.

Extract produced by Ordnance Survey 2014.
All rights reserved.

| | |
|---|--------------------------------------|
| City, Town | HARARE , BINDURA |
| Village, Business Centre | MBERENGWA , FENGA B.C. |
| Boundary, Cadastral, Original Grant | ————— |
| " " Subdivision | ————— |
| Road, Wide Tarred | ————— |
| " Narrow Tarred | ————— |
| " Gravel or Earth Bridge | ————— |
| " other | ————— |
| Track, Cut Line or Game Trail | ————— |
| Aerodrome Landing Area | INYATI |
| Railway, with Embankment, Cutting, Tunnel | ————— |
| Mast | ▲ |
| Trigonometrical Station and Height in metres to top of pillar | ▲ 158/P ▲ 1 190,6 |
| International Boundary Beacon, Magnetic Station | ▲ BB50A ☒ |
| Unmarked Spot Height: Ground Survey, Photogrammetric | . 1 272 . 1 173 |
| Power Line, 33kV and above, approximate alignment | ————— 33kV ————— |
| Huts, Staff Quarters | ▲▲▲▲ ■■■■■ |

BOUNDARY DIAGRAM REFERENCE

| | |
|-------------------------------|-------|
| International | ————— |
| Administrative District | ————— |
| Designated Area | ————— |

| | |
|---|---------------------|
| River, Watercourse | |
| Dam | |
| Lake | |
| Pan: Small, Large: Waterhole | |
| Rapid, Waterfall | |
| Well, Spring, Borehole, Windpump, Reservoir | |
| Furrow, Pipeline | |
| Seasonal Marsh | |
| Contours at 20 metre Vertical Interval, with Cliff Feature | |
| Depression, Sand | |
| Isolated Hill Feature that does not take a contour | |
| Cultivation | |
| Smooth Rock | |
| Mining or Prospecting Trench, Mine Dump, Quarry or Excavation | |
| Very Dense Bush, Dense Bush | |
| Medium Bush | |
| Sparse Bush, Open Grassland | |
| Orchard or Plantation | |
| Built-up Area, Buildings | |
| Church | |
| Dip Tank | |
| Hill name | DOMBOSHAWA |
| Mine Name | Copper Queen |
| National Monument or Place of Historical Interest | ⦿ |
| Police Station, Post Office, Post and Telegraph Agency | PS PO PTA |
| District Administration Office | DAO |