



UNIVERSITY OF CAMBRIDGE INTERNATIONAL EXAMINATIONS
General Certificate of Education Ordinary Level

CANDIDATE NAME

CENTRE NUMBER

--	--	--	--	--

CANDIDATE NUMBER

--	--	--	--



FASHION AND FABRICS **6050/01**
Paper 1 Theory **October/November 2012**
2 hours

Candidates answer Section A on the Question Paper.
Additional Materials: Answer Booklet/Paper
Coloured pencils (not yellow)
Ruler
Small piece of fabric, needle and thread

READ THESE INSTRUCTIONS FIRST

Write your Centre number, candidate number and name on all the work you hand in.
Write in dark blue or black pen.
You may use a soft pencil for any diagrams or rough working.
Do not use staples, paper clips, highlighters, glue or correction fluid.
DO NOT WRITE IN ANY BARCODES.
The Insert is for use with Questions 1 and 7.

You should illustrate your answers by means of clear, bold diagrams wherever possible.
You may use a needle and thread and a small piece of fabric to help in making drawings of stitches.
This fabric should **not** be handed in with your work.

Section A

Answer **all** parts of Question 1 in the spaces provided on the Question Paper.
You are advised to spend no longer than 40 minutes on Section A.

Section B

Answer any **three** questions.
Write your answers on the separate Answer Booklet/Paper provided.
Enter the numbers of the **Section B** questions you have answered in the grid on this page.

At the end of the examination, fasten all your work securely together.
The number of marks is given in brackets [] at the end of each question or part question.

For Examiner's Use	
Section A	
Section B	
Total	

This document consists of **8** printed pages and **1** insert.

Section A

Answer **all** questions in the spaces provided.



1 (a) Refer to page 2 of the Insert.

Name the style features using at least **two** words in **each** case.

- A
- B
- C
- D
- E
- F
- G
- H
- I
- J
- K
- L

[12]

(b) The pattern suggests using **Cotton Piqué** or **Cotton/Polyester Seersucker** fabrics, to make the **shorts, View C**.

Complete the following details:

(i) **Fabric: Cotton Piqué**

Structure:

Appearance:

Feel/handle:

Weight:

One appropriate fabric finish: [5]

(ii) **Fabric: Cotton/Polyester Seersucker**

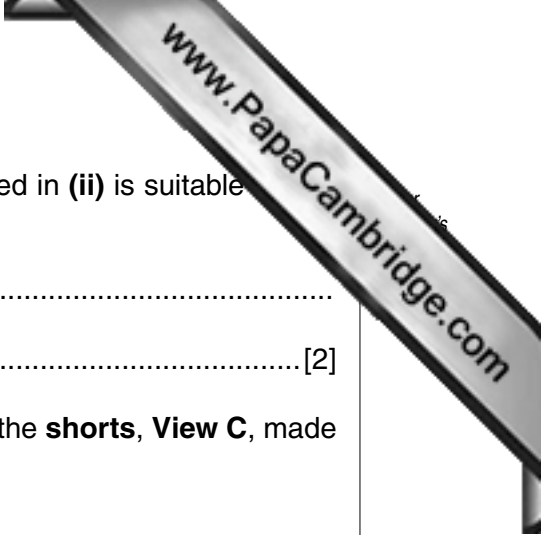
Structure:

Appearance:

Feel/handle:

Weight:

One appropriate fabric finish: [5]



(iii) State **two** reasons why the **Cotton Piqué** fabric described in (ii) is suitable for **shorts, View C**.

.....
..... [2]

(iv) Suggest **one** suitable seam finish for the crotch seam of the **shorts, View C**, made from **Cotton Piqué**. Give **two** reasons for your choice.

Seam

Reason 1

Reason 2 [3]

(v) The **shorts, View D** have a semi-concealed zipper at the side seam. Describe **two** adjustments which need to be made to the sewing machine before inserting a zip fastener.

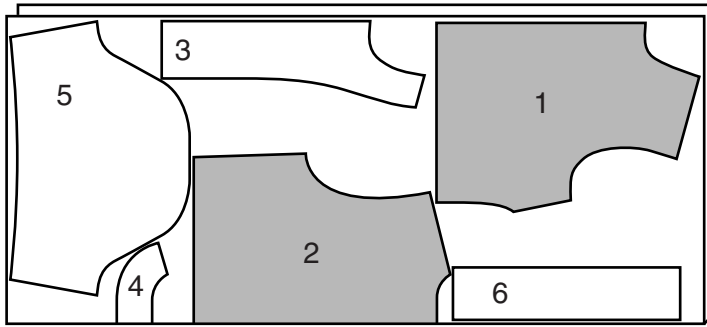
Adjustment 1

Adjustment 2 [2]

(vi) Draw and describe **four** symbols from a care label which you would expect to find in the shorts, if they were made from **Cotton/Polyester Seersucker**.

[4]

(c) The fabric layout for the **jacket, View E**, is given below.



(i) Label the **fold** and **selvedges** on the layout. [2]

(ii) Name the pattern pieces shown in the layout above.

1

2

3

4

5

6

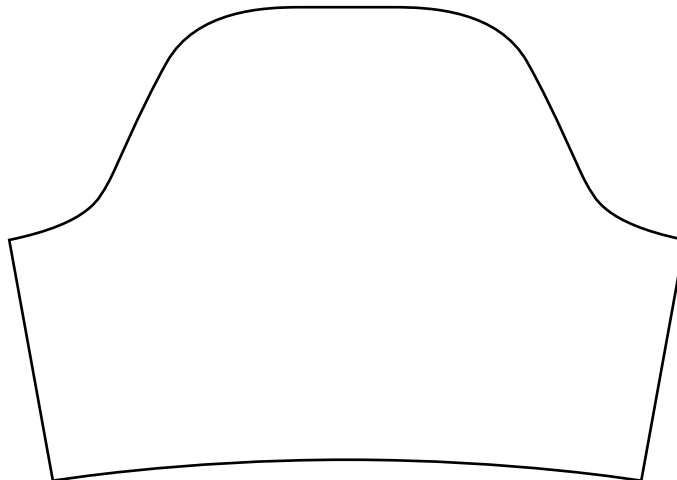
[6]

(iii) Explain why pieces 1 and 2 are shaded.

.....

..... [2]

(iv) Draw and label **six** pattern markings on the pattern piece below.



[6]

(d) Refer to page 3 of the Insert.

(i) Complete the following list of requirements to make the **jacket, View E**, in **size 8**.

- Fabric: Amount: Width:
- Interfacing: Amount: Width: Type:
- Thread: Amount: made from:
- Buttons: Size: made from: [9]

(ii) Give **two** reasons why interfacing is used on the **jacket, View E**.

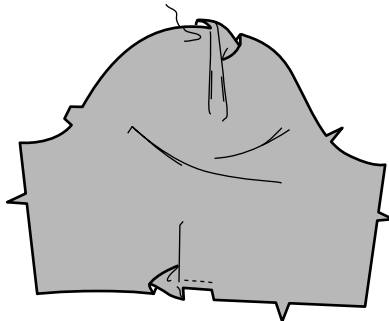
.....

..... [2]

(e) Complete the instructions for making and attaching the sleeve, on **jacket, view E** (**omitting the cuff**). Use the words from the following list:

- | | | | | |
|---------------|----------|---------|----------------|-------------|
| two | shoulder | notches | sleeve | neaten |
| balance marks | tack | ease | evenly | right sides |
| seam | 6 mm | notches | seam allowance | 1.5 |

(i) Make the pleat on the upper edge. Pin and in place. [1]

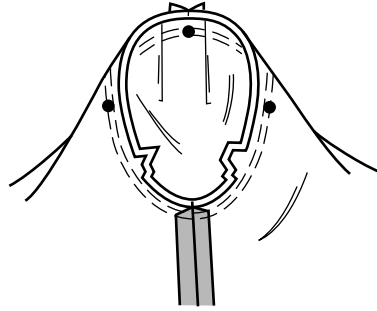


(ii) Machine rows of gathering lines in the, between the [3]



(iii) With together, pin and tack the seam, making sure the match and that the seam allowance is cm wide. [4]

- (iv) the seam using zig-zag stitch or overlocking.
- (v) Insert the sleeve into the armhole, matching side seam, seam notches and Pull up gathering lines and the stitches to fit the armhole. [3]



- (vi) Distribute the fullness, pin and tack. Machine stitch along the line. Stitch again, away from the first line of stitching. Neaten edges. [3]

(f) Give **three** reasons for making your own garments.

.....

.....

.....

.....

..... [3]

[Total: 78]

Section B

Answer **three** questions from this section.

- 2 (a) State the origin of cotton fibres. [2]
- (b) Describe **six** properties of cotton fibres. [6]
- (c) Explain **how and why** the following fabric finishes are applied to cotton fabrics:
- (i) Mercerisation [3]
- (ii) Brushing [3]
- (d) Describe the correct way to press cotton fabrics. [4]
- [Total: 18]
- 3 Using notes and labelled diagrams, describe:
- (a) the pattern markings you would expect to find on a pattern for an inverted pleat; [4]
- (b) how to pin and tack an inverted pleat on a skirt; [6]
- (c) how to machine the inverted pleat in place; [4]
- (d) **two** reasons for pressing the pleat correctly. [4]
- [Total: 18]
- 4 Using notes and labelled diagrams compare the methods used to work the following processes:
- (a) 'Lengthen a paper pattern' and 'shorten a paper pattern'; [6]
- (b) 'Trim corners', and 'layer seams'; [6]
- (c) 'Clip curves' and 'notch curves'. [6]
- [Total: 18]

- 5 (a) Draw a labelled sketch of a collar with revers. [3]
- (b) Using notes and diagrams explain:
- (i) why iron-on interfacing would be a suitable choice to interface the collar; [1]
 - (ii) how to tack the collar to the garment correctly; [4]
 - (iii) how to machine the collar accurately; [5]
 - (iv) why hand-sewing the collar in place permanently would be better than machining. [3]

[Total: 18]

- 6 (a) List **three** cutting tools which could be used for garment making. [3]
- (b) Describe **three** features you should look for when purchasing cutting tools for garment making, giving a reason in each case. [6]
- (c) Explain how to keep a steam iron in good condition. [3]
- (d) Describe **three** safety points which need to be considered when using a sewing machine, giving a reason in each case. [6]

[Total: 18]

7 Refer to the **jacket, View E** on the Insert.

- (a) Sketch and label **one** embroidery design suitable for hand stitching. Show how it can be used as a repeated pattern for the centre front edge of the jacket. [3]
- (b) Using three **named** hand embroidery stitches, show how these could be used to work the design. [6]
- (c) Give **two** reasons for the choice of embroidery thread(s). [2]
- (d) Describe the correct method for pressing hand embroidery. [4]
- (e) Suggest a suitable **named** fabric for the jacket, explaining your choice. [3]

[Total: 18]

Copyright Acknowledgements:

Questions 1 and 7 © Simplicity Pattern 2939; Simplicity Patterns Ltd; 2008.

Permission to reproduce items where third-party owned material protected by copyright is included has been sought and cleared where possible. Every reasonable effort has been made by the publisher (UCLES) to trace copyright holders, but if any items requiring clearance have unwittingly been included, the publisher will be pleased to make amends at the earliest possible opportunity.

University of Cambridge International Examinations is part of the Cambridge Assessment Group. Cambridge Assessment is the brand name of University of Cambridge Local Examinations Syndicate (UCLES), which is itself a department of the University of Cambridge.