



UNIVERSITY OF CAMBRIDGE INTERNATIONAL EXAMINATIONS
General Certificate of Education Ordinary Level



FASHION AND FABRICS

6050/02

Paper 2 Practical Test

October/November 2012

2 hours 30 minutes

Additional Materials:

Sewing equipment
Fabric
Pattern
Interfacing
Scissors

Sewing thread to match fabric
Tacking thread
Pencil
Ruler



This document consists of **6** printed pages and **2** blank pages.



Materials provided

- (a) McCall's pattern **M5391** size **AX5 (4-6-8-10-12)**.
An illustration of the ladies shorts, **view A**, is on the envelope containing the pattern.
- (b) A piece of fabric 115 cm wide and 45 cm long.
- (c) A piece of lightweight iron-on interfacing 12 cm wide and 45 cm long.
- (d) Sewing thread to match the fabric.
- (e) Tacking thread.

For this test you are to prepare the pattern and make up the right half of the shorts, **size 12, view A**, omitting the belt carriers.

Before you begin, you should study the question paper carefully, together with the illustration, the pattern and the fabric.

This is a multi-size pattern. The cutting line for **size 12** is shown by **the outer black solid line**.

A seam allowance of 1.5 cm is allowed within the pattern although it is not marked.

THE LABEL

Candidate's name

.....

Centre No./Candidate No.

..... /

The Test

1 Preparation

- (a) Write your name and candidate number on the envelope provided.
- (b) Select and separate pattern pieces 1, 2, 3, 7 and 9 for the shorts **view A size 12**.
- (c) On pattern piece 9, the waistband, cut through the centre back line and keep the pattern piece with 9 'waistband all views'.

2 Cutting out

- (a) Place the pattern pieces on the fabric as shown in the layout. For the purpose of this test place pattern piece 9 to the selvedge.
- (b) Cut out the **right half** of the shorts.
- (c) Transfer the pattern markings which are needed for making up this test.
- (d) Cut out the interfacing for the waistband as shown in the layout.

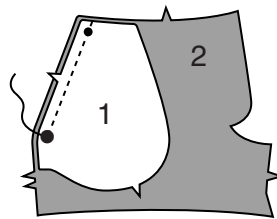
3 Making up

It is important that pressing is done at all stages.

Make up the **right half** of the shorts.

(a) Pocket

- (i) Attach the pocket to the front shorts matching the notch, small circles and large circle (●), pivoting at large circle to seam allowance. See diagram.

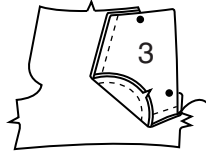


- (ii) Clip seam allowance to large circle.



- (iii) Turn the pocket to the inside and press.
- (iv) Topstitch 5 mm from the seam.

- (v) Stitch the side front to the pocket around outer edge, right sides together, matching notches and keeping the front free. See diagram.



- (vi) Trim and neaten the seam.
- (vii) Tack across the upper and side edges matching the circles.
- (b) Dart**
- (i) Work the dart on the back shorts.
- (ii) Secure the ends of the machine stitching at the point by hand.
- (c) Side seam**
- Stitch the front to the back at the side seam.
- (d) Inner leg seam**
- Work the inner leg seam.
- (e) Waistband**
- (i) Fuse the interfacing to the wrong side of the waistband.
- (ii) Turn in the seam allowance on the unnotched edge of the waistband. Press.
- (f) Front opening**
- On the front shorts turn the front extension (opening) to the inside along the Centre Front fold line (for the right hand side) and tack in place. **Do not** remove this tacking at the end of the test.
- (g) Attaching the waistband**
- (i) On the back shorts turn the centre back seam allowance to the inside and tack in place.
- (ii) Attach the waistband to the upper edge of the shorts matching the notch and balance mark (circle ●) and easing it to fit.
- (iii) Work the Centre Front seam of the waistband. Trim. Turn right side out.
- (iv) Secure the inside of the waistband with a suitable **hand sewn stitch**.

(h) The hem

- (i) Turn up the hem on the lower edge of the shorts (3.2 cm). Tack close to fold.
- (ii) Turn under 6 mm on raw edge easing in fullness. Tack.
- (iii) Topstitch along the upper tacking.

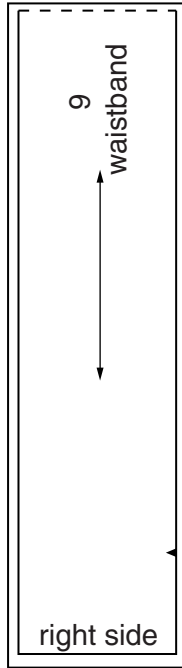
(i) Presentation

- (i) At the end of the examination remove the needle and unnecessary pins from your work.
- (ii) Write your name and candidate number on the label provided. Cut out the label and tack it to your test. The label should not cover any stitching and should be on **single fabric**.
- (iii) Press your work, fold it carefully and place it in the envelope provided. Do **not** include the pattern or the scraps of fabric you have left over.

6

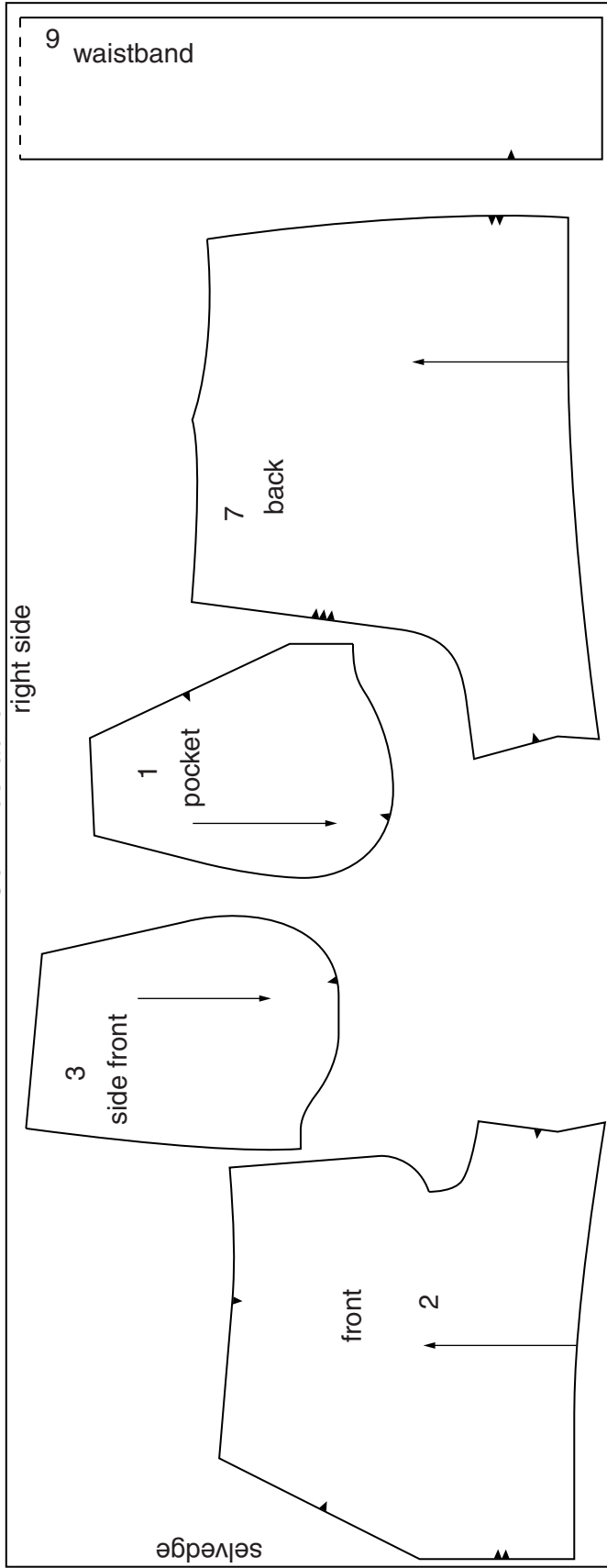
selvage

layout
interfacing



115 cm wide fabric

right side



Note: for the purpose of this test, place pattern piece 9 to the selvage

Permission to reproduce items where third-party owned material protected by copyright is included has been sought and cleared where possible. Every reasonable effort has been made by the publisher (UCLES) to trace copyright holders, but if any items requiring clearance have unwittingly been included, the publisher will be pleased to make amends at the earliest possible opportunity.

University of Cambridge International Examinations is part of the Cambridge Assessment Group. Cambridge Assessment is the brand name of University of Cambridge Local Examinations Syndicate (UCLES), which is itself a department of the University of Cambridge.