

Please write clearly in block capitals.

Centre number

Candidate number

Surname \_\_\_\_\_

Forename(s) \_\_\_\_\_

Candidate signature \_\_\_\_\_

# Level 3 Certificate and Extended Certificate in Applied Science

## KEY CONCEPTS IN SCIENCE

Unit Number: ASC1

Section C – ASC1/P (Physics)

Thursday 22 June 2017 Morning

Time allowed: 1 hour 30 minutes. You are advised to spend approximately 30 minutes on this section

### Materials

For this paper you must have:

- a calculator
- Formula sheet

### Instructions

- Use black ink or black ball-point pen.
- Answer **all** questions in each section.
- You must answer the questions in the spaces provided.
- Do not write outside the box around each page or on blank pages.
- Do all rough work in this book.
- Cross through any work you do not want to be marked.
- The total time for all three sections of this paper is one-and-a-half hours.

### Information

- You will be provided with a copy of the formula sheet.
- There are three sections in this paper:  
Section A – Biology Section B – Chemistry Section C – Physics.
- The marks for questions are shown in brackets.
- The maximum mark for this paper is 60 and the maximum mark for this section is 20.

### Advice

Read each question carefully.

For Examiner's Use	
Examiner's Initials	
Question	Mark
1	
2	
TOTAL	



**Section C – Physics**

Answer **all** questions in this section.

0	1
---	---

A technician investigated the voltage and current characteristics for an electrical component.

**Table 1** shows the technician's results.

**Table 1**

Voltage (V)	0.00	2.00	4.00	6.00	8.00	10.00	12.00
Current (A)	0.00	0.74	1.38	1.90	2.23	2.42	2.50

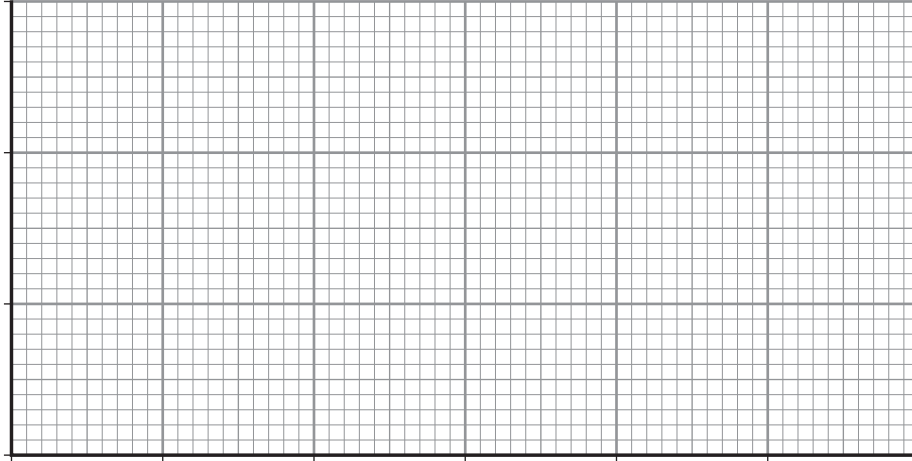
0	1	.	1
---	---	---	---

Plot a graph of the values in **Table 1** on **Figure 1**.  
Add appropriate scales and labels to the axes.

Draw a line of best fit.

**[3 marks]**

**Figure 1**



0 1 . 2

State the name of the electrical component which the technician was investigating.

[1 mark]

Tick (✓) **one** box.

A Semi-conducting diode

B Filament lamp

C Thermistor

D Resistor at constant temperature

0 1 . 3

Calculate the resistance of the electrical component when the voltage across it is 2 V.

State the correct unit in your answer.

[2 marks]

---

---

---

---

Resistance = \_\_\_\_\_

0 1 . 4

As the voltage across the electrical component increases, its resistance increases. Explain why.

[3 marks]

---

---

---

---

---

---

---

---

9

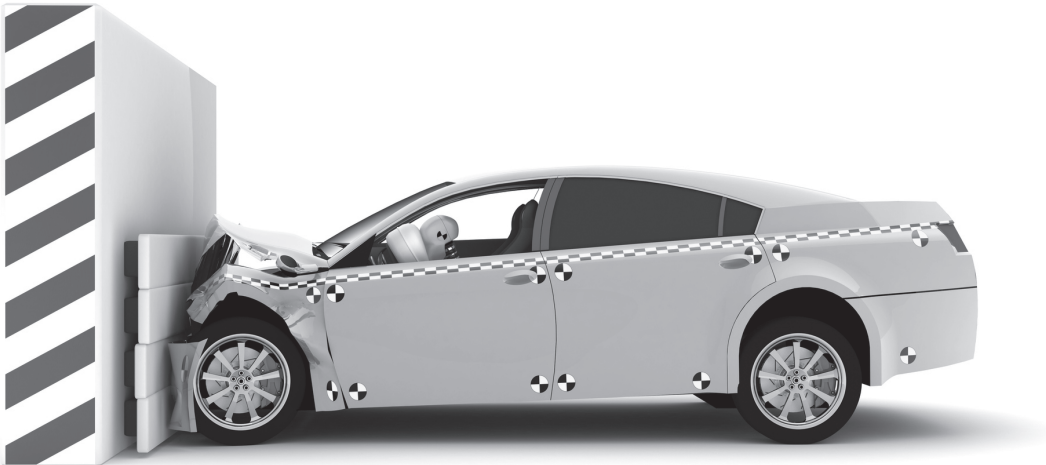
Turn over ►



0 2

An automotive engineer is performing crash tests on a new model of car. The 'crumple zone' at the front of the car is designed to reduce injuries in a crash. **Figure 2** shows one of the tests carried out by the automotive engineer.

**Figure 2**



0 2 . 1

State the Law of Conservation of Momentum.

**[2 marks]**

---

---

---

---



0 2 . 2

Explain how the 'crumple zone' can reduce the chance of serious injury in a crash.

[4 marks]

---

---

---

---

---

---

---

---

---

---

0 2 . 3

Describe the energy changes as the car crashes.

[3 marks]

---

---

---

---

---

---

---

---

---

---

Turn over ►



0 2 . 4

State **two** ways the engineer could increase the momentum of the test car before the crash.

**[2 marks]**

---

---

---

---

---

---

---

---

**11****END OF QUESTIONS**

**There are no questions printed on this page**

**DO NOT WRITE ON THIS PAGE  
ANSWER IN THE SPACES PROVIDED**



**There are no questions printed on this page**

**DO NOT WRITE ON THIS PAGE  
ANSWER IN THE SPACES PROVIDED**

**Copyright information**

For confidentiality purposes, from the November 2015 examination series, acknowledgements of third party copyright material will be published in a separate booklet rather than including them on the examination paper or support materials. This booklet is published after each examination series and is available for free download from [www.aqa.org.uk](http://www.aqa.org.uk) after the live examination series.

Permission to reproduce all copyright material has been applied for. In some cases, efforts to contact copyright-holders may have been unsuccessful and AQA will be happy to rectify any omissions of acknowledgements. If you have any queries please contact the Copyright Team, AQA, Stag Hill House, Guildford, GU2 7XJ.

Copyright © 2017 AQA and its licensors. All rights reserved.

