

New Specification



Rewarding Learning

ADVANCED SUBSIDIARY (AS)
General Certificate of Education
2009

StudentBounty.com

71	
Candidate Number	
<input type="text"/>	

Geography
 Assessment Unit AS 2
assessing
 Human Geography
 [AG121]



AG121

THURSDAY 11 JUNE, AFTERNOON

TIME

1 hour 30 minutes.

INSTRUCTIONS TO CANDIDATES

Write your Centre Number and Candidate Number in the spaces provided at the top of this page.

Section A: candidates must answer this section

Section B: answer **all three** questions in this section, you should write your answers in the space provided in this question paper.

Section C: answer **any two** questions from this section.

INFORMATION FOR CANDIDATES

The total mark for this paper is 90.

Quality of written communication will be assessed in **all** questions.

Figures in brackets printed down the right-hand side of pages indicate the marks awarded to each question or part question.

For Examiner's use only	
Question Number	Marks
1	
2	
3	
4	
5	
6	
7	

Total Marks	
--------------------	--

Section A

Answer this section

1 (a) Study **Resource 1A** on page 3, which illustrates a partially completed isoline map of the velocity distribution in a river channel at a meander bend (drawn along cross-section X–Y).

(i) Plot the two velocity readings recorded in the channel at a distance of **5 m** from river bank X. [2]

(ii) Complete the four isovels (lines joining points of equal velocity) at intervals of 0.1 m s^{-1} . [4]

(iii) Explain the isoline pattern for velocity throughout the channel area in **Resource 1A**.

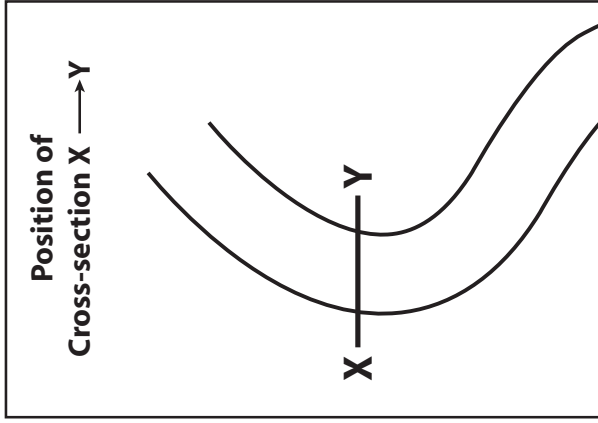
[4]

(iv) What type of statistical technique could be used to investigate the relationship between the average velocity of the river and distance from the left bank of the meander bend? Justify your choice. (No calculations are required)

[3]

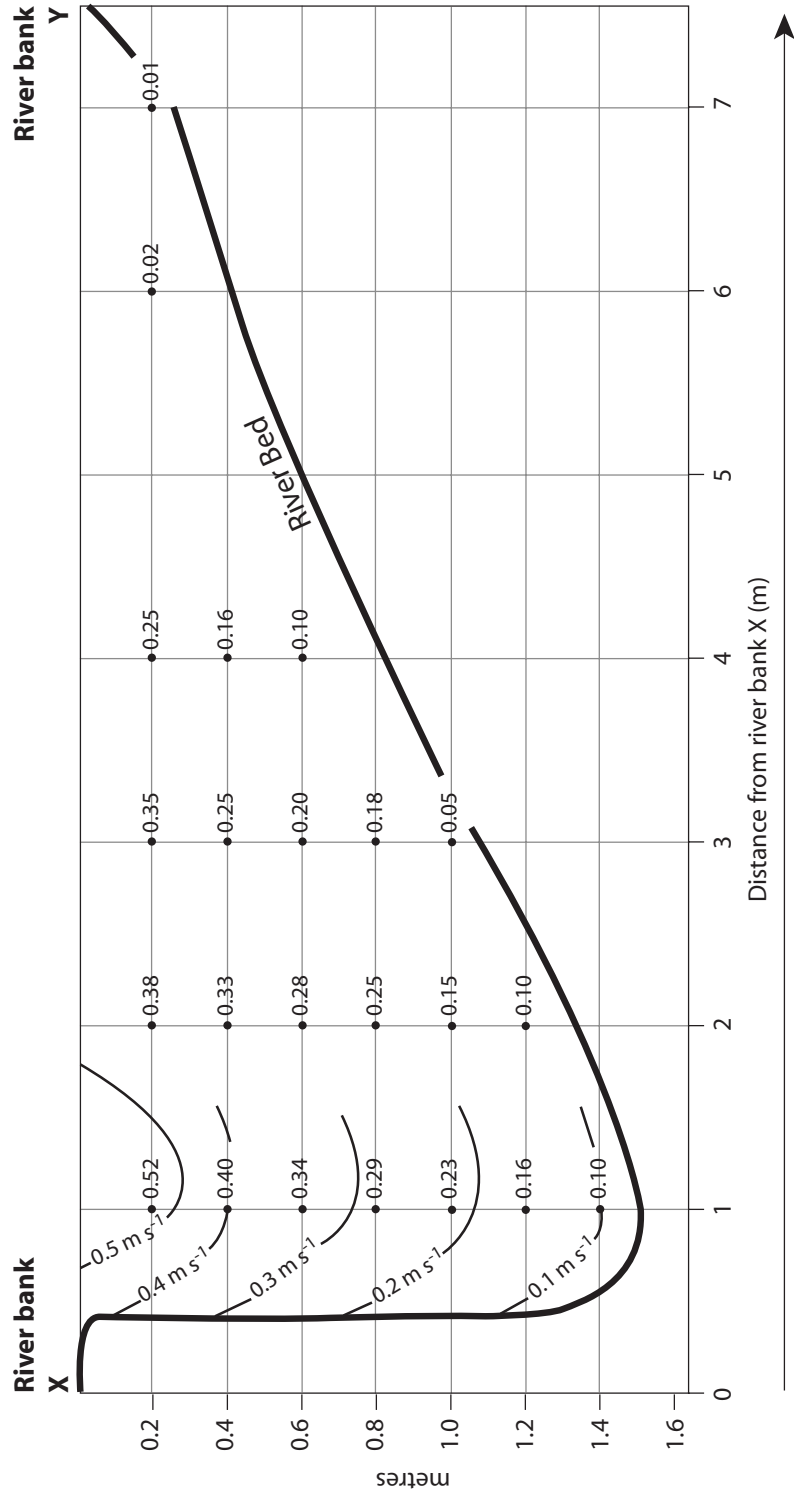
Resource 1A

Depth	Distance from river bank X						
	1 m	2 m	3 m	4 m	5 m	6 m	7 m
0.2 m	0.52 m s ⁻¹	0.38 m s ⁻¹	0.35 m s ⁻¹	0.25 m s ⁻¹	0.14 m s ⁻¹	0.02 m s ⁻¹	0.01 m s ⁻¹
0.4 m	0.40 m s ⁻¹	0.33 m s ⁻¹	0.25 m s ⁻¹	0.16 m s ⁻¹	0.02 m s ⁻¹		
0.6 m	0.34 m s ⁻¹	0.28 m s ⁻¹	0.20 m s ⁻¹	0.10 m s ⁻¹			
0.8 m	0.29 m s ⁻¹	0.25 m s ⁻¹	0.18 m s ⁻¹				
1.0 m	0.23 m s ⁻¹	0.15 m s ⁻¹	0.05 m s ⁻¹				
1.2 m	0.16 m s ⁻¹	0.10 m s ⁻¹					
1.4 m	0.10 m s ⁻¹						



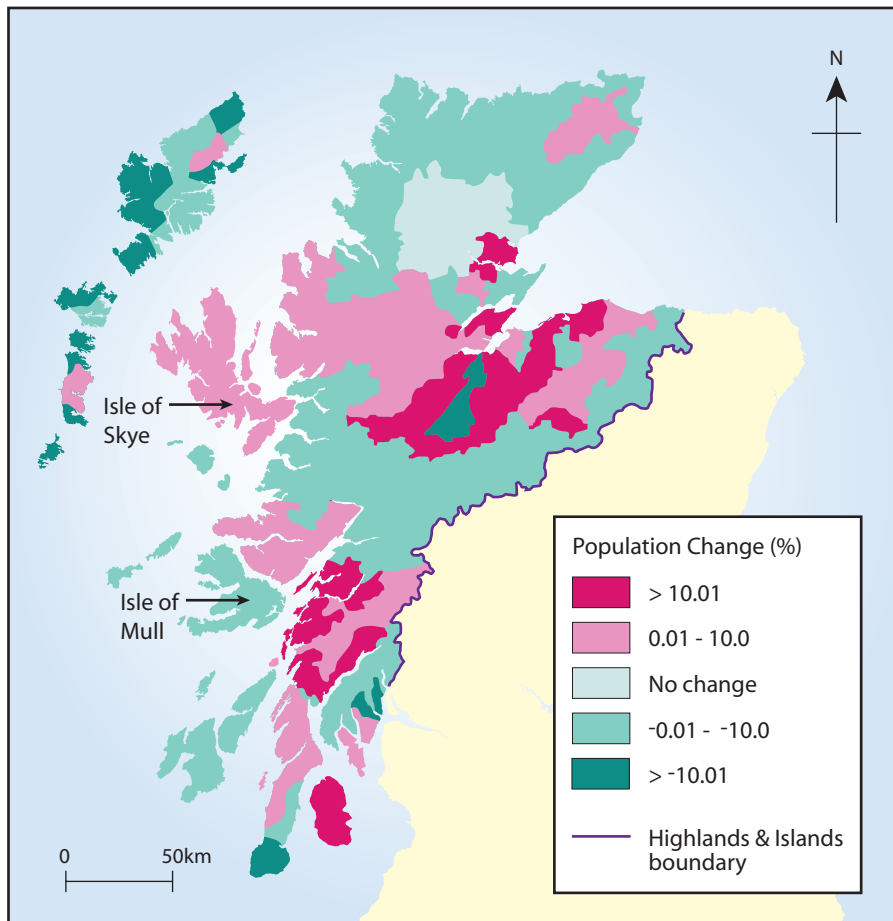
— 0.1 m s⁻¹ — Isovel (isoline) line joining points of equal velocity

• 0.15 River Velocity (m s⁻¹)



(b) Study **Resource 1B**, which illustrates population change in the Highlands and Islands of Scotland between 1991 and 2001.

Resource 1B

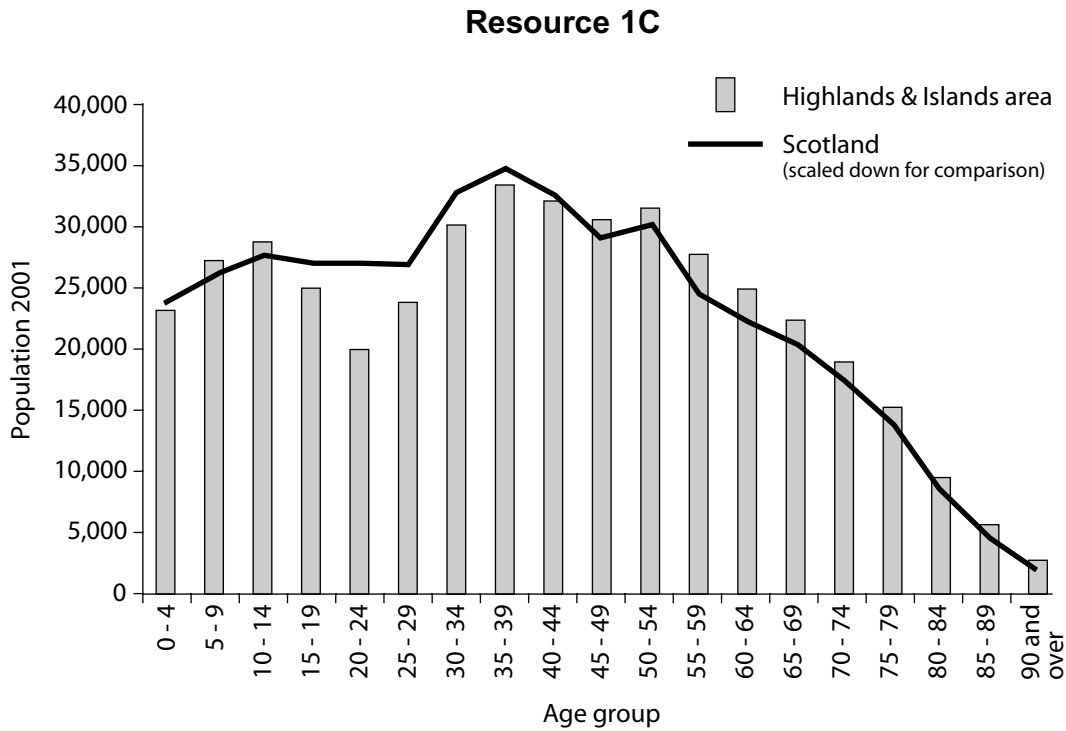


Adapted from © The Geography Review, Vol. 18 No. 2 published by Philip Allan Updates

(i) State how the rate of population change differs on the Isle of Mull compared to the Isle of Skye.

[2]

(iii) Study **Resource 1C**, which illustrates the age profile for the Highlands and Islands region compared to Scotland as a whole.



Source: Adapted from Geography Review Vol 10 No.2

1. Which age group, in the Highlands and Islands, differs most from the age profile for Scotland?

_____ [1]

2. Which age group, in the Highlands and Islands, shows the greatest over-representation compared to Scotland as a whole?

_____ [1]

3. Using evidence from **Resource 1C** explain **one** potential problem, created by the age profile, for the development of the Highlands and Islands region.

 _____ [3]

BLANK PAGE

(Questions continue overleaf)

(c) Study **Resource 1D**, which is a satellite (remotely sensed) image of Hurricane Katrina in the Atlantic Ocean in August 2005.

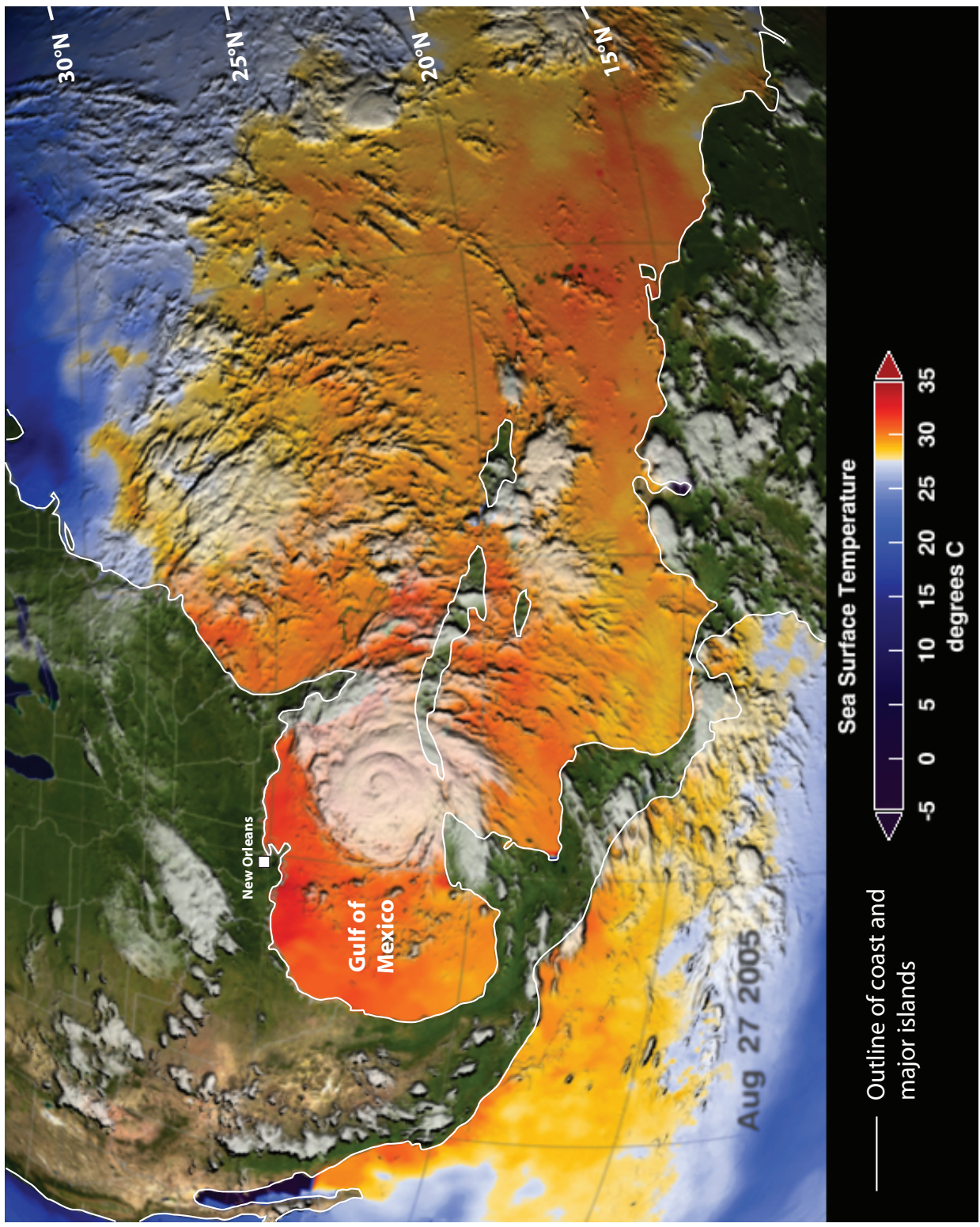
(i) Hurricanes form under specific conditions. Using **Resource 1D**, identify and explain any **two** of these which are evident on the satellite image.

[4]

(ii) Apart from weather monitoring, state **one** use of satellite (remotely sensed) imagery in **geographical** studies.

[1]

Resource 1D

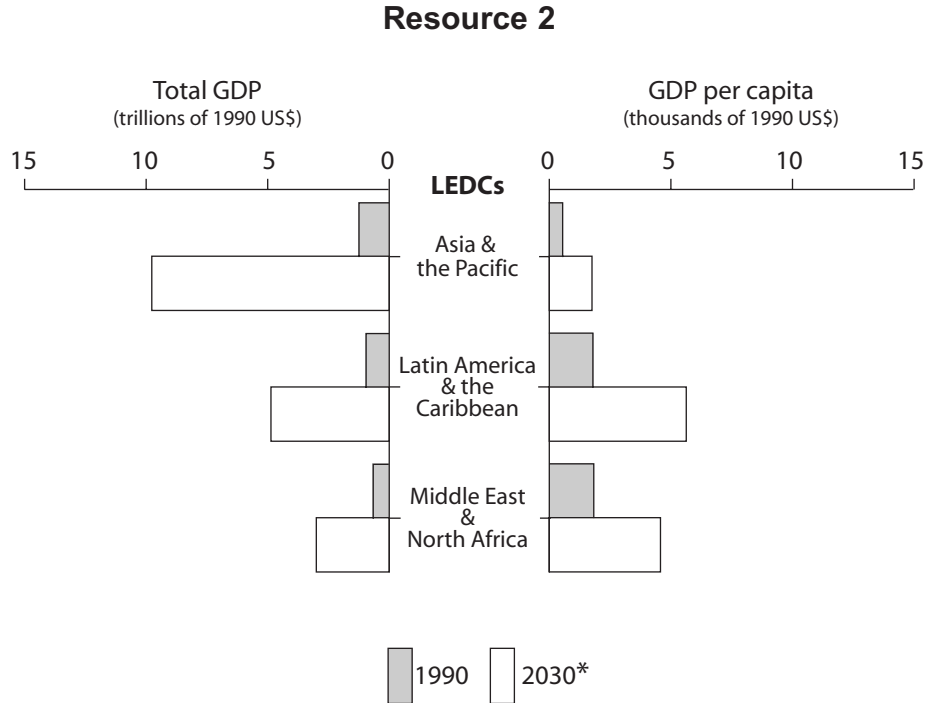


Source: Adapted from NASA satellite image

Section B

Answer all **three** questions in this section

- 2 Study **Resource 2** which shows total GDP and GDP per capita in selected regions in 1990 and projected for 2030.



*Data for 2030 are projections

© International Bank for Reconstruction and Development, The World Bank

- (a) (i) State the increase in **total GDP** in Asia and the Pacific between 1990 and 2030.

_____ [1]

- (ii) State the increase in **GDP per capita** in Asia and the Pacific between 1990 and 2030.

_____ [1]

(iii) Discuss how natural population increase may contribute to the differences over time in total GDP and GDP per capita in the regions shown in **Resource 2**.

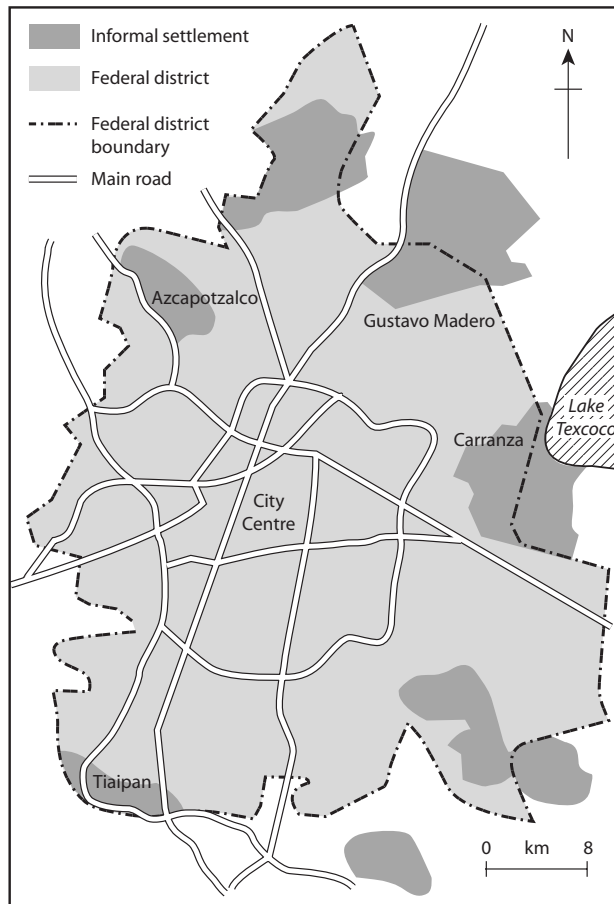
[4]

(b) Describe how age dependency in a LEDC would differ from that in a MEDC and outline **two** economic implications for a LEDC.

[6]

3 (a) Study **Resource 3** which shows the location of informal settlements in Mexico City.

Resource 3



© *Urbanisation: Changing Environments* by Corrin Flint and David Flint published by Collins Educational, 1998 reprinted by kind permission of Harper Collins publishers. ISBN 0003266877

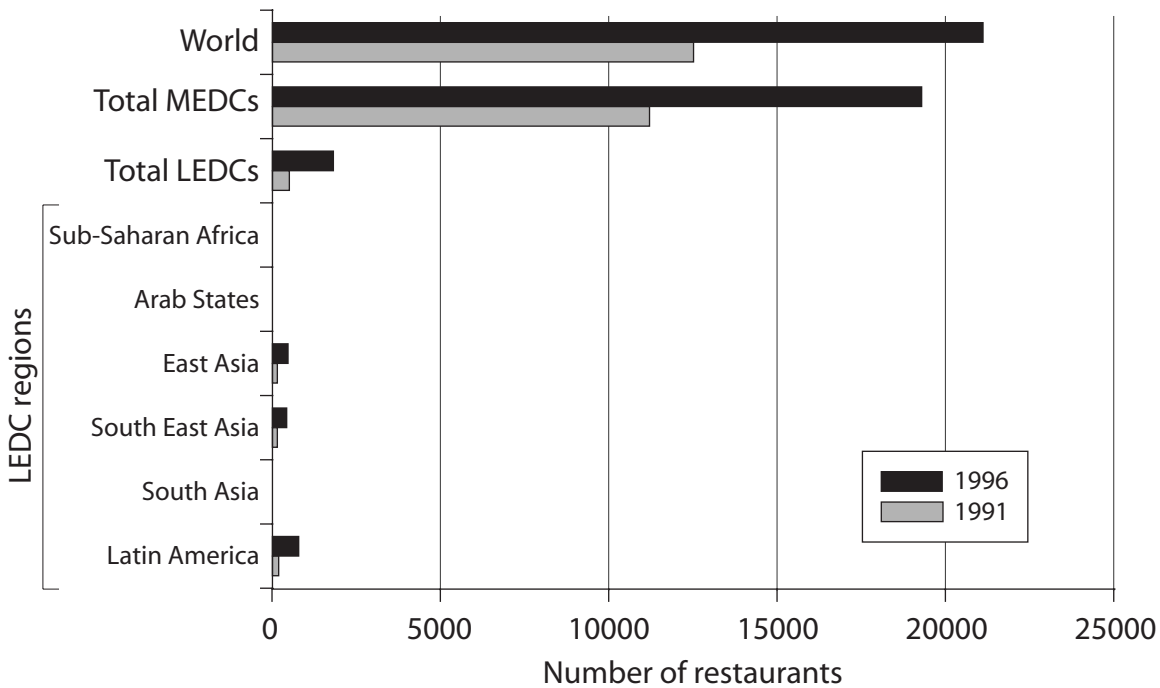
Describe the location of informal settlements in Mexico City and discuss the levels of service provision and types of economic activity you would expect to find in such settlements.

4 (a) Describe and evaluate one **social** measure of development.

[4]

(b) Study **Resource 4** which shows the number of McDonald's restaurants by region in 1991 and 1996.

Resource 4



Source: adapted from www.globalpolicy.org/globaliz/charts/mcdon2.htm

McDonald's is a transnational company. Describe the pattern shown in the resource and identify one **social** implication of this trend.

[3]

(c) Transnational companies like McDonald's are one symbol of globalisation. Discuss how globalisation can affect the **economic** development of a LEDC you have studied.

[5]

Section C

Answer **any two** questions

- 5 “Population distribution is related to the availability of physical and human resources.” Discuss this statement with reference to a national case study. [12]
- 6 With reference to places for illustration, discuss **three** issues faced in the rural–urban fringe. [12]
- 7 Define **either** colonialism **or** neo-colonialism and discuss how your chosen process has affected the level of development of a LEDC you have studied. [12]

Permission to reproduce all copyright material has been applied for.
In some cases, efforts to contact copyright holders may have been unsuccessful and CCEA
will be happy to rectify any omissions of acknowledgement in future if notified.