

New Specification



StudentBounty.com

Centre Number	er
71	
Candidate Number	
<input type="text"/>	

General Certificate of Secondary Education
2011

Leisure and Tourism

Unit 1: Introduction to Leisure and Tourism

[GLT11]



MONDAY 16 MAY, AFTERNOON

TIME

1 hour 30 minutes.

INSTRUCTIONS TO CANDIDATES

Write your Centre Number and Candidate Number in the spaces provided at the top of this page.
Write your answers in the spaces provided in this question paper.
Answer **all five** questions.

INFORMATION FOR CANDIDATES

The total mark for this paper is 100.
Quality of written communication will be assessed in **all** questions.
Figures in brackets printed down the right-hand side of pages indicate the marks awarded to each question or part question.

You are provided with a Resource Booklet for use with Questions 2 and 3.

For Examiner's use only	
Question Number	Marks
1	
2	
3	
4	
5	
Total Marks	

Examiner Only	
Marks	Remark

1 (a) Define the term **leisure**.

[2]

(b) Complete **Table 1** below to identify whether the following leisure activities are active or passive.

Leisure Activity	Active/Passive
Hill Walking	
Visiting the Theatre	
Playing Wii	
Chatting on Facebook	
Watching the Grand National	
DIY	

Table 1

[6]

(c) Describe **one** reason why people engage in leisure activities.

[3]

(d) Identify **three** components of the Leisure industry.

1. _____
2. _____
3. _____ [3]

(e) More people participate in leisure today than ten years ago.

Identify and analyse **three** factors which have influenced these changes.

[9]

Examiner Only	
Marks	Remark

[Turn over

- 2 Study **Resource 1** which shows information about Newtown Leisure Centre. Answer the questions that follow.

Resource 1

Newtown Leisure Centre has three swimming pools, a fitness suite, multi-purpose halls, function rooms and a health suite. A synthetic pitch is available for multi-sport use. A wide variety of classes is offered, which includes swimming, lifesaving, karate, judo, aerobics, trampolining and table tennis. A crèche is provided for children aged 6 months to 5 years. The Centre has a café serving hot food throughout the day.

- (a) Identify **four** facilities an individual might use at Newtown Leisure Centre.

1. _____
2. _____
3. _____
4. _____ [4]

- (b) List **three** classes which may be taken in the dry area of Newtown Leisure Centre.

1. _____
2. _____
3. _____ [3]

Examiner Only	
Marks	Remark

(c) Explain why it is important that Newtown Leisure Centre provides a:

Crèche

[3]

Café

[3]

Examiner Only	
Marks	Remark

[Turn over

(d) (i) Identify and explain **one** type of information which Newtown Leisure Centre might keep using up-to-date business systems.

[3]

(ii) Analyse **one** advantage and **one** disadvantage for Newtown Leisure Centre of using up-to-date technology to store information.

[6]

Examiner Only	
Marks	Remark

3 Study **Resource 2** (on pages 2 and 3 of the Resource Booklet). Answer the questions that follow.

(a) Discover Northern Ireland is an example of a tourism organisation. Complete **Table 2** to identify **two other** types of tourism organisation and provide an example of each.

Organisation	Example

Table 2 [4]

(b) What evidence is there to suggest that Discover Northern Ireland wants to appeal to other countries?

[2]

Examiner Only	
Marks	Remark

(c) Explain how the accommodation listed in the Northern Ireland Accommodation Guide might meet the needs of people taking:

Special Interest Holidays

[3]

Short Break Holidays

[3]

Examiner Only	
Marks	Remark

4 Study **Resource 3** (on back page of the Resource Booklet) which shows part of the management structure in a zoo. Answer the questions that follow.

(a) Using the management structure in **Resource 3**, identify **two** supervisory and **two** operational jobs within the Zoo and complete **Table 3**.

Supervisory	
Supervisory	
Operational	
Operational	

Table 3

[4]

(b) Describe the following terms relating to employment.

Full-time

[2]

Seasonal

[2]

Examiner Only	
Marks	Remark

(c) Discuss **two** main duties of a:

Curator

[6]

Zoo Keeper

[6]

Examiner Only	
Marks	Remark

(d) Identify what actions the Head of Business might take to support **two** of his staff in their work duties.

[6]

Examiner Only	
Marks	Remark

Permission to reproduce all copyright material has been applied for.
In some cases, efforts to contact copyright holders may have been unsuccessful and CCEA
will be happy to rectify any omissions of acknowledgement in future if notified.

New
Specification



Rewarding Learning

General Certificate of Secondary Education
2011

Leisure and Tourism

Unit 1: Introduction to
Leisure and Tourism

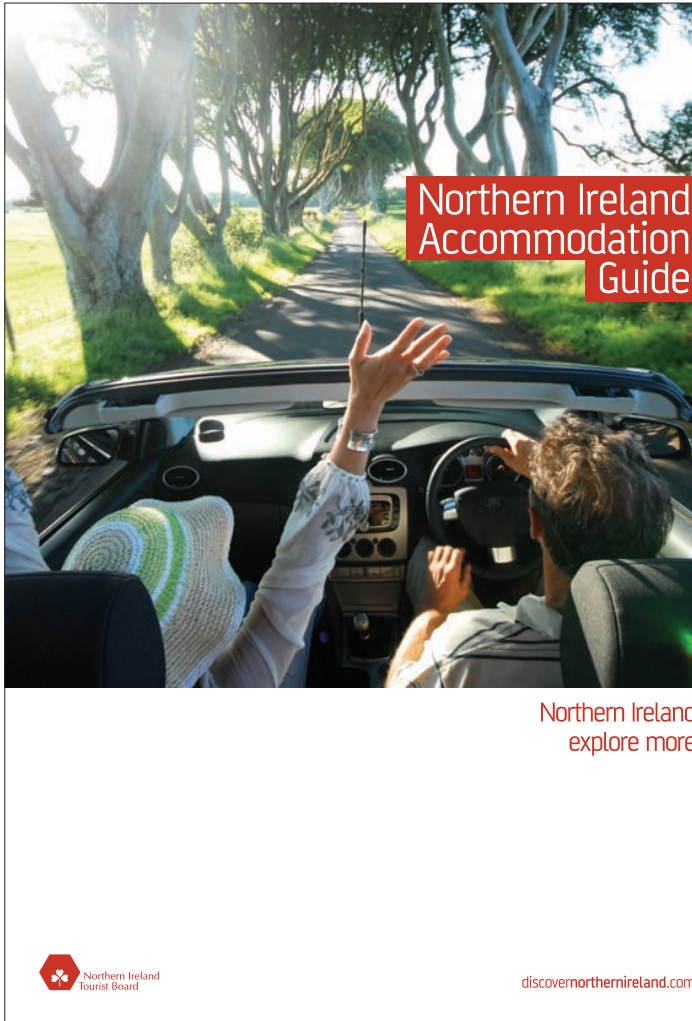
[GLT11]

MONDAY 16 MAY, AFTERNOON

RESOURCE BOOKLET

Resource 2

Discover Northern Ireland



Northern Ireland Accommodation Guide

By section:

- Bed & Breakfasts
- Caravan & Camping
- Guesthouses
- Hostels
- Hotels
- Self-catering Accommodation

© NI Tourist Board www.discovernorthernireland.com/information/brochures.aspx

Resource 2

Discover Northern Ireland



Visitor Guide Digital brochure

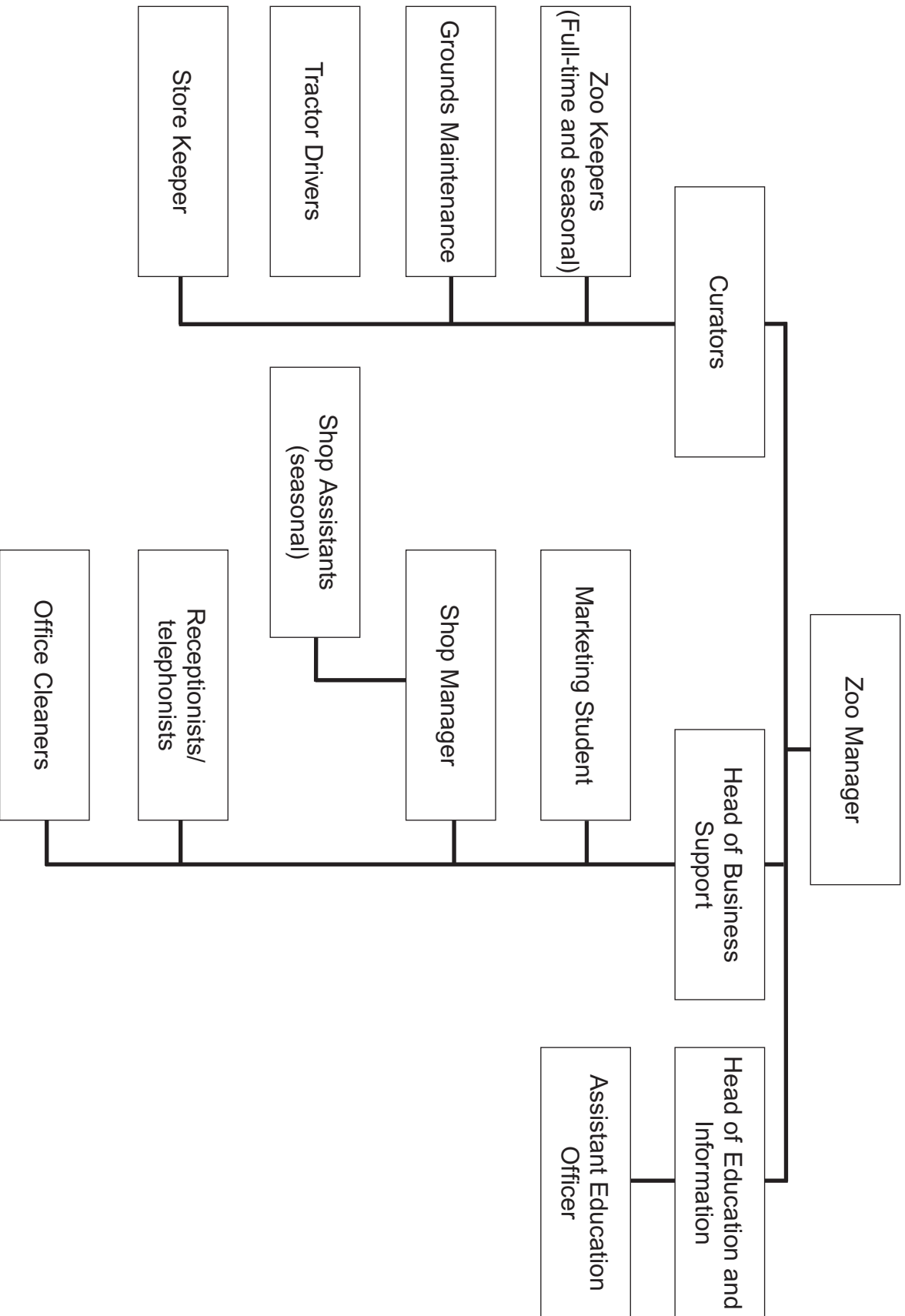
Also available:

- Visitor Guide (Deutsche)
- Visitor Guide (Español)
- Visitor Guide (Français)
- Visitor Guide (Italiano)

© NI Tourist Board www.discovernorthernireland.com/information/brochures.aspx

Resource 3

Zoo Management Structure



Permission to reproduce all copyright material has been applied for. In some cases, efforts to contact copyright holders may have been unsuccessful and CCEA will be happy to rectify any omissions of acknowledgement in future if notified.