

CAMBRIDGE INTERNATIONAL EXAMINATIONS
GCE Advanced Subsidiary Level and GCE Advanced Level

www.PapaCambridge.com

MARK SCHEME for the May/June 2013 series

9713 APPLIED INFORMATION & COMMUNICATION TECHNOLOGY

9713/02

Paper 2 (Practical Test A), maximum raw mark 120

This mark scheme is published as an aid to teachers and candidates, to indicate the requirements of the examination. It shows the basis on which Examiners were instructed to award marks. It does not indicate the details of the discussions that took place at an Examiners' meeting before marking began, which would have considered the acceptability of alternative answers.

Mark schemes should be read in conjunction with the question paper and the Principal Examiner Report for Teachers.

Cambridge will not enter into discussions about these mark schemes.

Cambridge is publishing the mark schemes for the May/June 2013 series for most IGCSE, GCE Advanced Level and Advanced Subsidiary Level components and some Ordinary Level components.

Page 2	Mark Scheme	Syllabus
	GCE AS/A LEVEL – May/June 2013	9713

9713 – June 2013

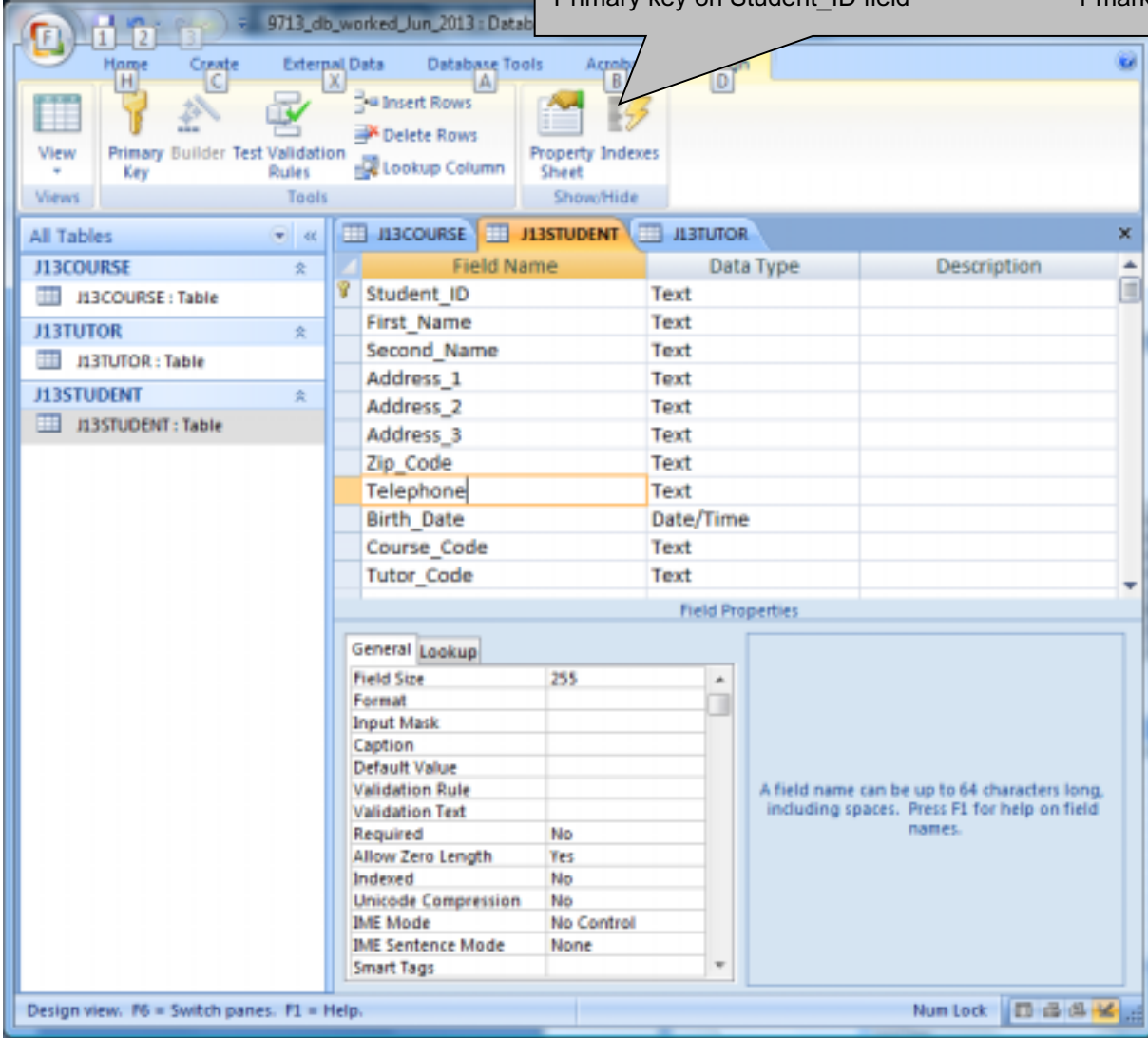
AS Level – Paper 2 – Practical Test

No marks to be awarded for any printout not containing the candidate name, candidate number and centre number

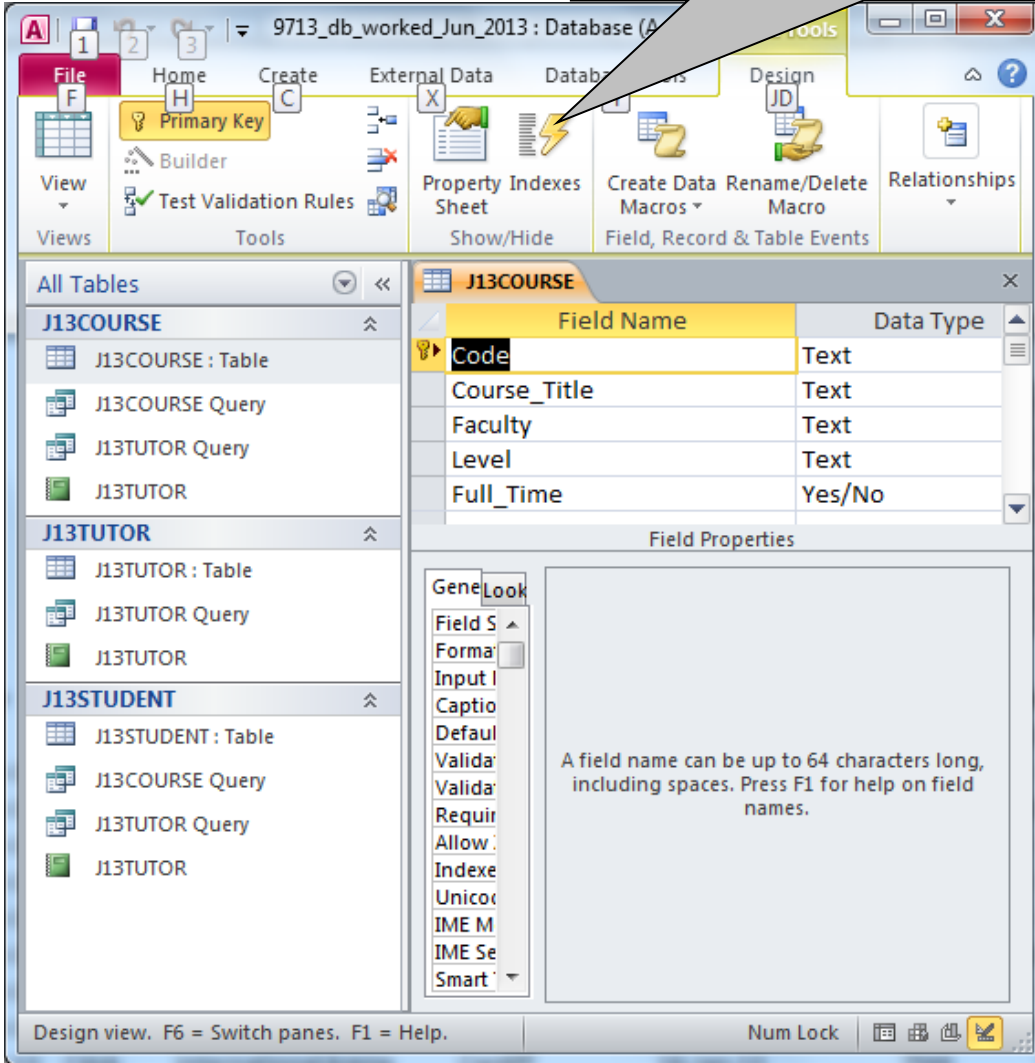
Step 2

Candidate name, centre number and candidate number

STUDENT Table created
 Appropriate table name 1 mark
 Appropriate field name – Second name 1 mark
 Appropriate field names – 3 address fields 3 marks
 Field types (1 mark per field) 11 marks
 Primary key on Student_ID field 1 mark



COURSE Table created 1 mark
 Appropriate table name 1 mark
 Appropriate field names 5 marks
 Field types (1 mark per field) 1 mark
 Key on Code field



TUTOR Table created

- Appropriate table name: 1 mark
- Appropriate field name – First name: 1 mark
- Appropriate field name – Second name: 1 mark
- Field types (1 mark per field): 7 marks
- Contract field set to 1dp: 1 mark
- Key on Code field: 1 mark

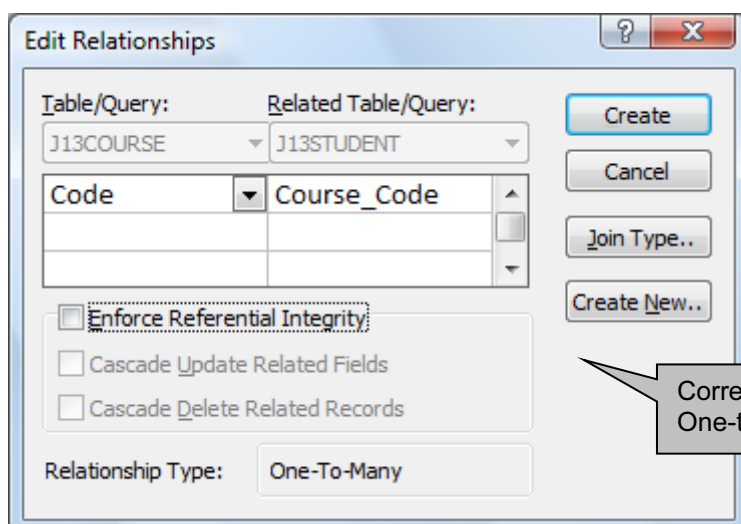
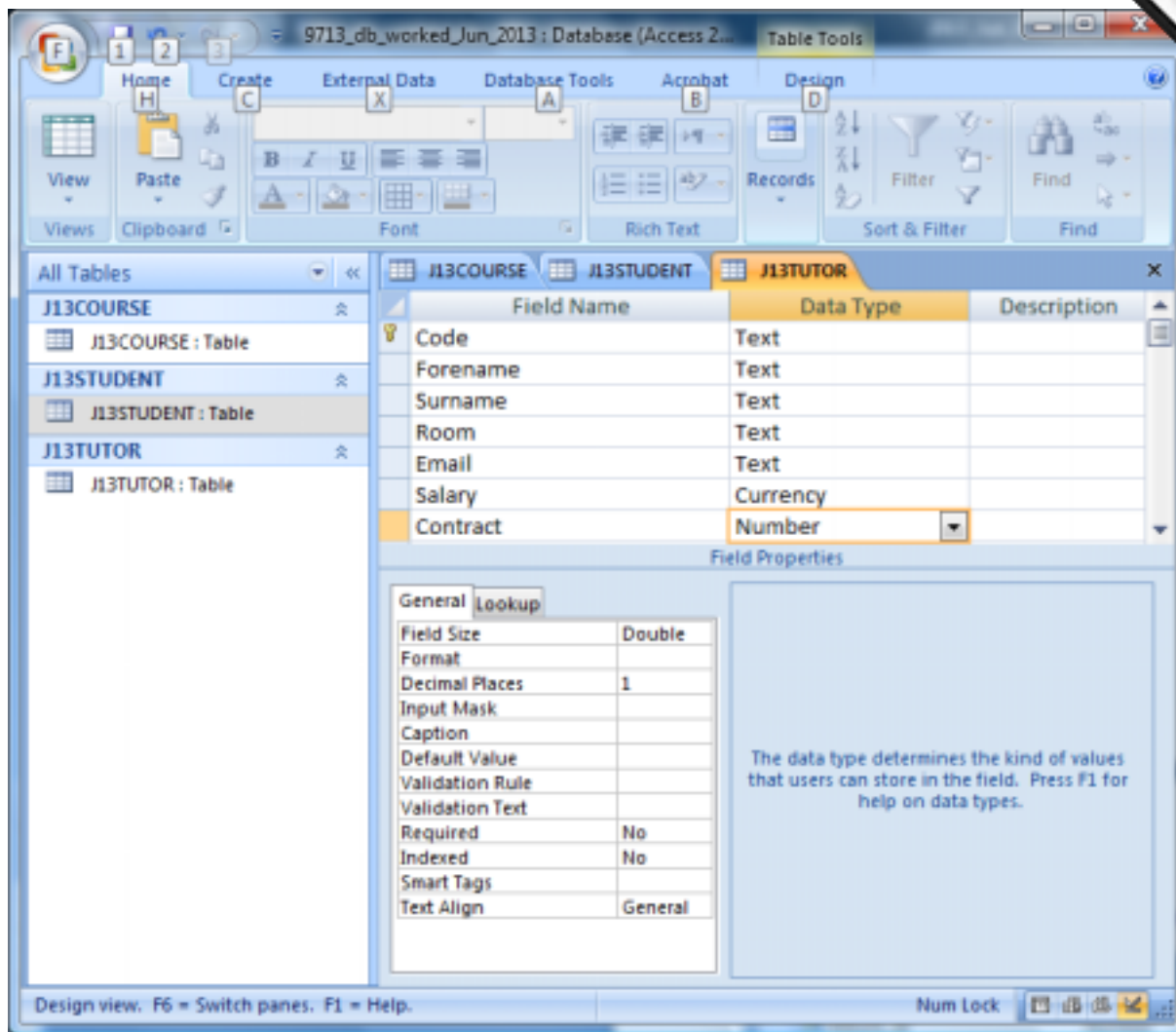
Field Name	Data Type	Description
Code	Text	
Forename	Text	
Surname	Text	
Room	Text	
Email	Text	
Salary	Currency	
Contract	Number	

Field Properties	
General	
Format	Currency
Decimal Places	2
Input Mask	
Caption	
Default Value	
Validation Rule	
Validation Text	
Required	No
Indexed	No
Smart Tags	
Text Align	General

The error message that appears when you enter a value prohibited by the validation rule. Press F1 for help on validation text.

Design view. F6 = Switch panes. F1 = Help. Num Lock

www.PapaCambridge.com



Correct fields
One-to-many
1 mark
1 mark

Edit Relationships

Table/Query: J13TUTOR Related Table/Query: J13STUDENT

Code Tutor_Code

Enforce Referential Integrity

Cascade Update Related Fields

Cascade Delete Related Records

Relationship Type: One-To-Many

Buttons: OK, Cancel, Join Type.., Create New..

Correct fields 2 marks
 One-to-many 1 mark

J13COURSE J13STUDENT J13TUTOR Relationships

Field Name	Data Type	Description
Code	Text	Correct field 1 mark
Forename	Text	>0 1 mark
Surname	Text	AND 1 mark
Room	Text	<=1 1 mark
Email	Text	Appropriate text 1 mark
Salary	Currency	Including parameters 1 mark
Contract	Number	

Field Properties

General Lookup

Field Size	Double
Format	
Decimal Places	1
Input Mask	
Caption	
Default Value	
Validation Rule	>0 And <=1
Validation Text	You may only enter a value greater than 0 or less than or equal to 1 for this field
Required	No
Indexed	No
Smart Tags	
Text Align	General

elp.

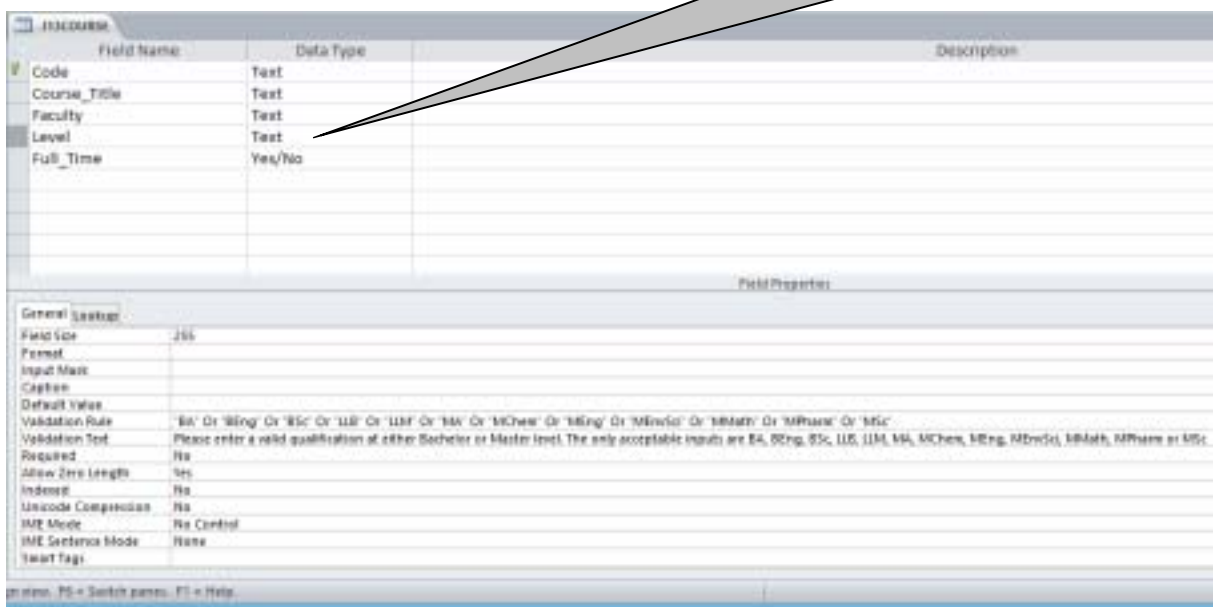
Acceptable data for Course.Level field

BA
BEng
BSc
LLB
LLM
MA
MChem
MEng
MEnvSci
MMath
MPharm
MSc

Evidence of all 12 data sets 3 marks
 Alphabetical sort 1 mark

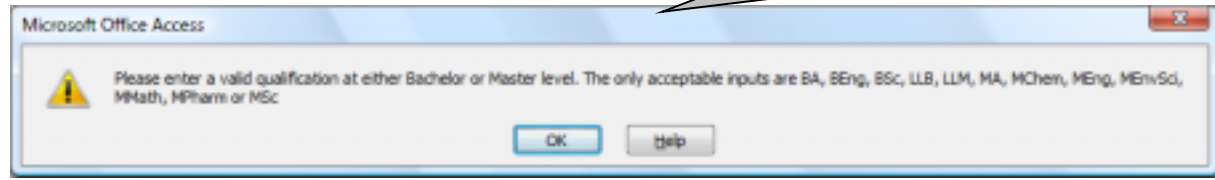
Rule

Correct field 1 mark
 All 12 correct entries in rule 1 mark
 OR 1 mark

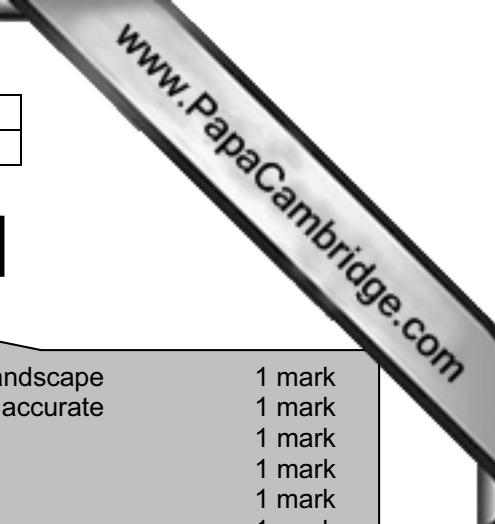


Text

Appropriate text 1 mark
 Including parameters 1 mark



Page 9	Mark Scheme	Syllabus	Paper
	GCE AS/A LEVEL – May/June 2013	9713	02



Testing the data entered is valid

8 x 4 table with gridlines 1 mark
 Text 100% accurate 1 mark
 Correct cells merged 1 mark

Orientation - Landscape 1 mark
 Heading 100% accurate 1 mark
 32 point 1 mark
 Bold 1 mark
 Centre aligned 1 mark
 Sans-serif 1 mark

Fieldname	Tutor.Contract		
Test type	Range check		
Data chosen	Type of data	Expected outcome	Actual outcome
0.2	Normal	Accepted	0.2 stored/accepted
0.5			0.5 stored/accepted
0	Abnormal	Error message	
1.1			
1	Extreme	Accepted	1 stored/accepted

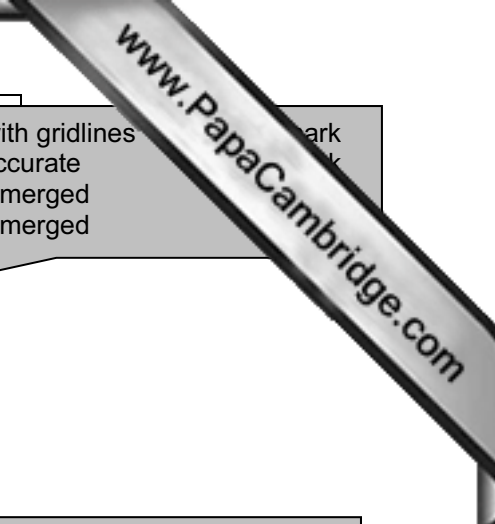
Normal data 1 mark
 2 Correct examples 1 mark
 Expected to work 1 mark
 Works 1 mark

Abnormal data 1 mark
 2 Correct examples 1 mark
 Expected to be rejected 1 mark
 Rejected 1 mark

Extreme data 1 mark
 Correct example 1 mark
 Expected to work 1 mark
 Works 1 mark

Footer
 Name & numbers left align 1 mark
 File name & path right align 1 mark

16 x4 table with gridlines
Text 100% accurate
Correct cells merged
Correct cells merged



Fieldname	Course.Level		
Test type	Lookup check		
Data chosen	Type of data	Expected outcome	Actual outcome
BA	Normal	Accepted	BA stored/accepted
BEng			BEng stored/accepted
BSc			BSc stored/accepted
LLB			LLB stored/accepted
LLM			LLM stored/accepted
MA			MA stored/accepted
MChem			MChem stored/accepted
MEng			MEng stored/accepted
MEnvSci			MEnvSci stored/accepted
MMath			MMath stored/accepted
MPharm			MPharm stored/accepted
MSc			MSc stored/accepted
Trash	Abnormal	Error message	

All 12 in Normal data 1 mark
One item of Abnormal 1 mark

No table split over page 1 mark

Header:
 Appropriate title & candidate details 1 mark
 Tutor & student details differentiated 1 mark
 Correct fields:
 Tutor names, Room, Student names 1 mark
 Tel, Course title 1 mark

Room closures - rooms 2 to 10

Report by A Candidate XX999 / 9999

Tutor details		Student details				
Room	Surname	Forename	Second_Name	First_Name	Telephone	Course_Title
10	Yu	Xiaodong				
			Bennett	Laura	0545234544	International Banking and Financial Services
			Browning	Karla	05554183498	French and History of Art
			Di Vizio	Shruti	05554136238	Medieval Studies
			Gupta	Kratika	0555413489	English Literature
			Ha fez	Taran	05554145046	Archaeology & Classical Studies
			Lopez	Duarte	05554139874	Artificial Intelligence and Cybernetics
			Lopez	Pedro	05554127700	Archaeology & Classical Studies
			Oldham	Felicity	05554189723	Classical Tradition
			Platt	Karthilene	0555412898	Medieval Archaeology
			Schneider	Olga	0555413489	History of Art
			Schuhmacher	Peter	05554198787	English Language
			Taylor	Anne	05554127612	International Business
			Tello	Christal	05554185772	Art
			Tobin	David	05554132204	English Literature and Italian
			Turner	Steven	05554143749	Real Estate Finance
			Wang	Lu	05554193509	Management with Information Technology
			Wexler	Traugott	0555418529	Agriculture
2	Brown	Laura				
			Bayer	Evert	0555412955	Graphic Communication
			Bravo	Pablo	0545234544	Ancient History and History
			Gad	Siddharth	0555413489	Archaeology & Classical Studies
			Garrido	Pedro	0545234544	Philosophy
			Kacaratchi	Summer	0555413489	Food marketing & Business Economics
			Lu	Tanjung	05554176876	International Financial Regulation

Search:
 Rooms 2,4,10 2 marks
 Grouping:
 Room 1 mark
 Then Tutor 1 mark
 Sorting:
 Ascending Surname within group 1 mark
 Printed single page wide 1 mark

Page 12	Mark Scheme	Syllabus	Paper
	GCE AS/A LEVEL – May/June 2013	9713	02



Room	Surname	Forename	Second_Name	First_Name	Telephone	Course_Title
			McGrew	Emie	05551148012	Philosophy and International Relations
			Valles	Miguel	05551243572	Philosophy and Politics
	Tyrell	Paul	Weiss	Nina	05551242326	Philosophy and German
			Dev	Teng	05551299987	Business and Management
			Kaznica	Steve	0545231544	German Studies
4						
	Gerard	David	Jolley	Sharon	0555122961	Development Finance
			Kaspirov	Ina	05551277696	Military History and Strategic Studies
			Lopez	Jorge	05551297291	Digital Signal Processing and Communications
	Norfolk	Charlotte				
			Bansal	Mohamed	05551107475	Quantity Surveying
			Block	Carla	05551131159	French Studies and Politics
			Bland	Susan	05551268572	Robotics
			Brown	Luigi	05551144477	History
			Damji	Peter	05551100788	French Studies and English Language
			Evans	Mike	05551161089	Modern History
			Francisco Javier	Adone	05551215137	French and History of Art
			Georgioudou	Nikos	05551238283	Quantity Surveying
			Ghandi	Tomas	05551118283	Financial Research
			Joshi	Rish	0545231544	Business Economics
			Lugo	Jorge	05551453781	Philosophy and English Literature
			Nichols	Amy	0555123489	Agriculture
			Nicolaides	Nikos	0555127210	Modern and Contemporary Writing
			Reeves	Nicola	05551275136	Statistics / Applied Statistics
			Schulze	Carmen	05551168431	English Language
			Schulze	Peter	05551215594	English Language
			Strauss	Dietmar	0555125489	French and Management Studies
			Viren	Lasse	0555127524	Archaeology & Classical Studies

Page 13	Mark Scheme	Syllabus	Paper
	GCE AS/A LEVEL – May/June 2013	9713	02



Room	Surname	Forename	Second_Name	First_Name	Telephone	Course_Title
	Wainwright	John			05551231572	Applied Informatics - Biodiversity Informatics
	Weismuller	Thora			05551224490	History
	Williams	Dewy			0555127960	French Studies and Politics

11 September 2011

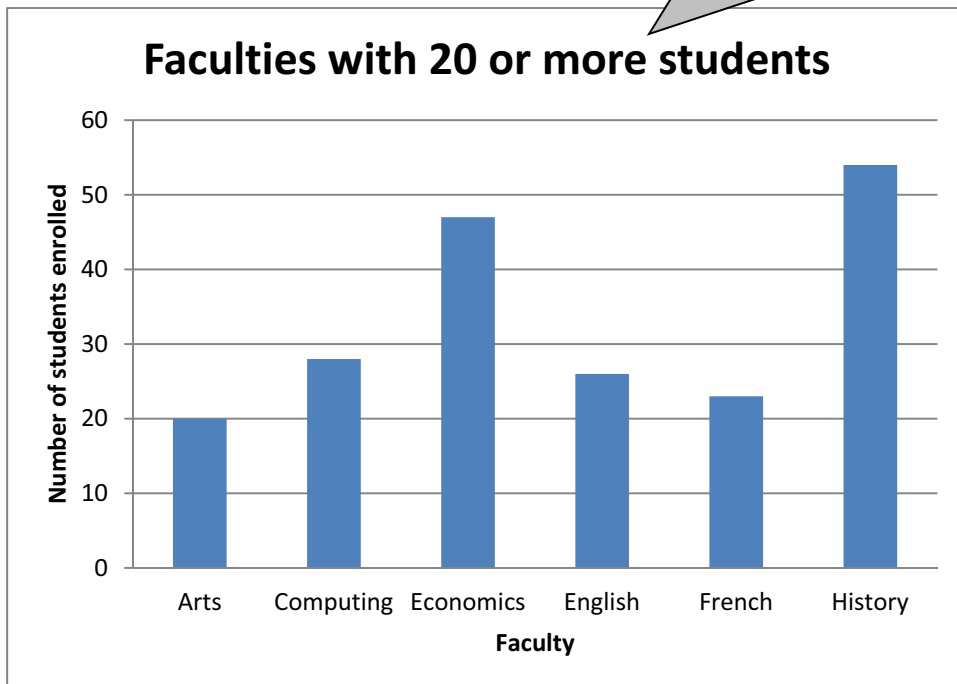
Page 3 of 3

Number of students enrolled in each Faculty:

Agriculture	4
Arts	20
Computing	28
Construction	9
Economics	47
English	26
French	23
Geography	3
German	8
History	54
Italian	10
Law	15
Mathematics	7
Philosophy	11

Correct calculated totals: 7 marks
 Award 1 mark for each correct pair
 No Politics, Psychology or Science Faculty visible
 1 mark

Extracted ≥ 20 2 marks
 Appropriate chart type 2 marks
 Appropriate title 1 mark
 Appropriate titles & labels 2 marks



Page 15	Mark Scheme	Syllabus Paper
	GCE AS/A LEVEL – May/June 2013	9713

Step 23

Content (K & U) – Maximum 10 marks

Accept different solutions like:

Set document as a 'shared document'...

...with read-write permissions for all

...set full permissions for me

Other users track changes

They submit their documents with (suggested) tracked changes

...initials/staff codes

As administrator I will review their changes...

...and accept changes...

...reject each change

Set document permissions to read only for other users

They save in own user area with read/write permissions

Their version of document merged with master copy

I will review again each change after the merge

Saving documents/files with version numbers/identifier (eg initials) of editor

...use of sequential version numbering systems

Other suitable ideas:

'Comments' used to review original

Comments inserted

Comments removed by me

Compare & Merge