

(b) Fig. 4.1 summarises results for three diseases in the WTCCC study. The 22 human autosomes and the X chromosome (chromosome 23) are shown.

Chromosome locations with SNPs that are associated with a disease at a statistically significant level (greater than 5 arbitrary units) are shown in black.

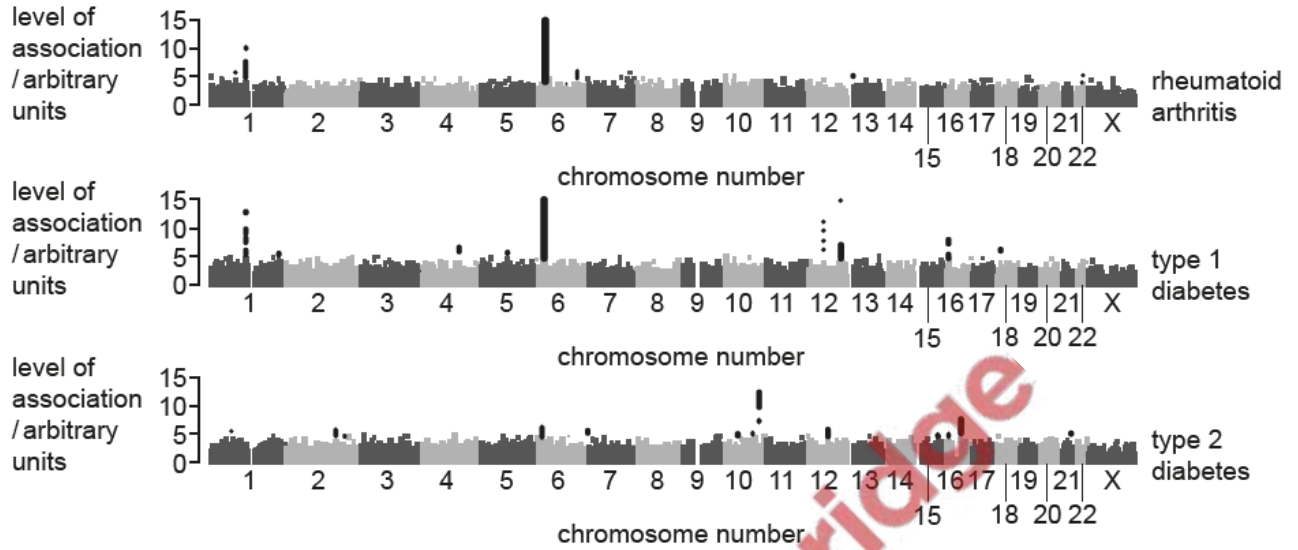


Fig. 4.1

(i) Identify the chromosomes that contain SNPs that have a high level of association with **both** rheumatoid arthritis and Type 1 diabetes.

..... [1]

(ii) With reference to Fig. 4.1, compare the genetic basis of the three diseases.

.....

 [2]

(c) Individuals can choose to have their DNA analysed on a microarray chip to predict their risk of developing different diseases.

Outline the social **and** ethical considerations of this type of DNA analysis.

.....

.....

.....

.....

.....

.....

.....

.....

.....

.....

[3]

[Total: 12]

