



UNIVERSITY OF CAMBRIDGE INTERNATIONAL EXAMINATIONS
General Certificate of Education Advanced Level

CANDIDATE
NAME

CENTRE
NUMBER

--	--	--	--	--

CANDIDATE
NUMBER

--	--	--	--



CHEMISTRY

9701/43

Paper 4 Structured Questions

October/November 2010

1 hour 45 minutes

Candidates answer on the Question Paper.

Additional Materials: Data Booklet

READ THESE INSTRUCTIONS FIRST

Write your name, Centre number and candidate number on all the work you hand in.

Write in dark blue or black pen.

You may use a pencil for any diagrams, graphs, or rough working.

Do not use staples, paper clips, highlighters, glue or correction fluid.

DO NOT WRITE ON ANY BARCODES.

Section A

Answer **all** questions.

Section B

Answer **all** questions.

You may lose marks if you do not show your working or if you do not use appropriate units.

A Data Booklet is provided.

At the end of the examination, fasten all your work securely together.

The number of marks is given in brackets [] at the end of each question or part question.

For Examiner's Use

1	
2	
3	
4	
5	
6	
7	
8	
9	
10	
11	
Total	

This document consists of **19** printed pages and **1** blank page.



Section A

Answer **all** the questions in the space provided.

- 1 (a) (i) Write equations to illustrate the reactions of the following oxides with water.

phosphorus(V) oxide

sulfur(IV) oxide

- (ii) When NO_2 reacts with water, nitrogen undergoes a disproportionation reaction in which one nitrogen atom decreases its oxidation number by 1 and another nitrogen atom increases its oxidation number by 1. A mixture of two acids results. Suggest an equation for the reaction between NO_2 and water.

.....

- (iii) In a similar disproportionation reaction, ClO_2 reacts with aqueous NaOH to produce a solution containing two chlorine-containing sodium salts. Suggest an equation for the reaction between ClO_2 and aqueous NaOH .

.....

[4]

- (b) The major source of sulfur for the manufacture of sulfuric acid by the Contact process is the de-sulfurisation of 'sour' natural gas. Many natural gas wells produce a mixture of volatile hydrocarbons (mainly CH_4 and C_2H_6) together with up to 25% hydrogen sulfide, H_2S .

- (i) Complete and balance the following equation showing the complete combustion of a gaseous mixture consisting of 2 mol of CH_4 , 1 mol of C_2H_6 and 1 mol of H_2S .

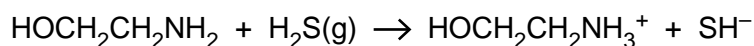


- (ii) Explain why it is important to remove the H_2S before burning the natural gas industrially.

.....

.....

The H_2S is removed by passing the 'sour' natural gas through a solvent containing ethanolamine. The following reaction takes place.



- (iii) If a sample of natural gas contains 5% by volume of H_2S , calculate the mass of ethanolamine required to remove all the H_2S from a 1000dm^3 sample of gas, measured under room conditions.

.....

.....

.....

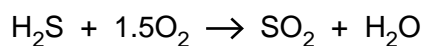
The H_2S can be recovered by warming the solution to 120°C , when the reaction is reversed. The ethanolamine can then be recycled.

- (iv) What *type* of reaction is occurring here?

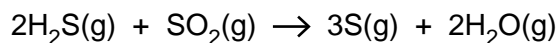
.....

The recovered H_2S is converted to sulfur by the following two reactions.

- I Part of the H_2S is burned in air.



- II The gas stream resulting from reaction I is then blended with the remaining H_2S and fed into an iron oxide catalyst bed, where sulfur and water are produced according to the following equation.



- (v) Use the following data to calculate ΔH^\ominus for the reaction between H_2S and SO_2 .

compound	$\Delta H_f^\ominus / \text{kJ mol}^{-1}$
$\text{H}_2\text{S}(\text{g})$	-21
$\text{SO}_2(\text{g})$	-297
$\text{H}_2\text{O}(\text{g})$	-242
$\text{S}(\text{g})$	+11

$$\Delta H^\ominus = \dots\dots\dots \text{kJ mol}^{-1}$$

[8]

[Total: 12]

- 2 (a) Explain why complexes of transition elements are often coloured.

.....

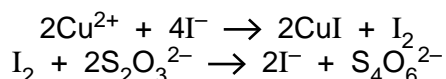
 [3]

- (b) When water is added to white anhydrous CuSO_4 , the solid dissolves to give a blue solution. The solution changes to a yellow-green colour when concentrated $\text{NH}_4\text{Cl}(\text{aq})$ is added to it. Concentrating the solution produces green crystals of an ammonium salt with the empirical formula $\text{CuN}_2\text{H}_8\text{Cl}_4$. Explain these observations, showing your reasoning.

.....

 [3]

- (c) Copper can be recovered from low-grade ores by 'leaching' the ore with dilute H_2SO_4 , which converts the copper compounds in the ore into $\text{CuSO}_4(\text{aq})$. The concentration of copper in the leach solution can be estimated by adding an excess of aqueous potassium iodide, and titrating the iodine produced with standard $\text{Na}_2\text{S}_2\text{O}_3(\text{aq})$.



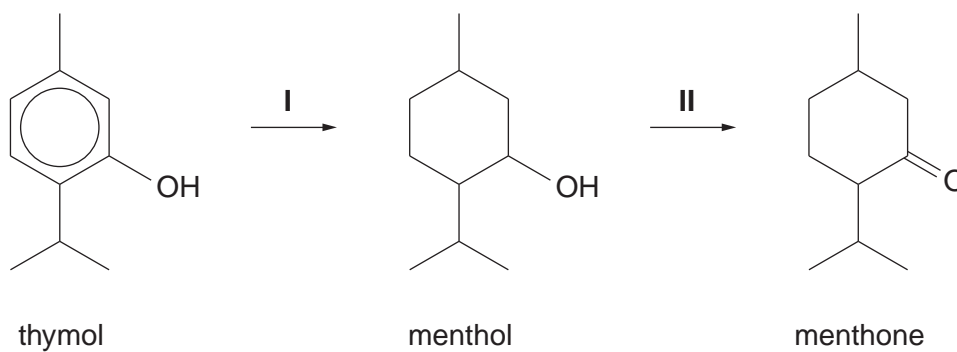
When an excess of $\text{KI}(\text{aq})$ was added to a 50.0cm^3 sample of leach solution, and the resulting mixture titrated, 19.5cm^3 of 0.0200mol dm^{-3} $\text{Na}_2\text{S}_2\text{O}_3(\text{aq})$ were required to discharge the iodine colour.

Calculate the $[\text{Cu}^{2+}(\text{aq})]$, and hence the percentage by mass of copper, in the leach solution.

percentage of copper =% [3]

[Total: 9]

- 3 Menthol and menthone, the main constituents of oil of peppermint, can be made synthetically from thymol by the following route.



(a) State the *type of reaction* of

- reaction I,
- reaction II.

[2]

(b) Suggest **one** test for **each** of the three compounds that would give a positive result with the stated compound but a negative result with **both** the other two compounds.

thymol

test

observation

menthol

test

observation

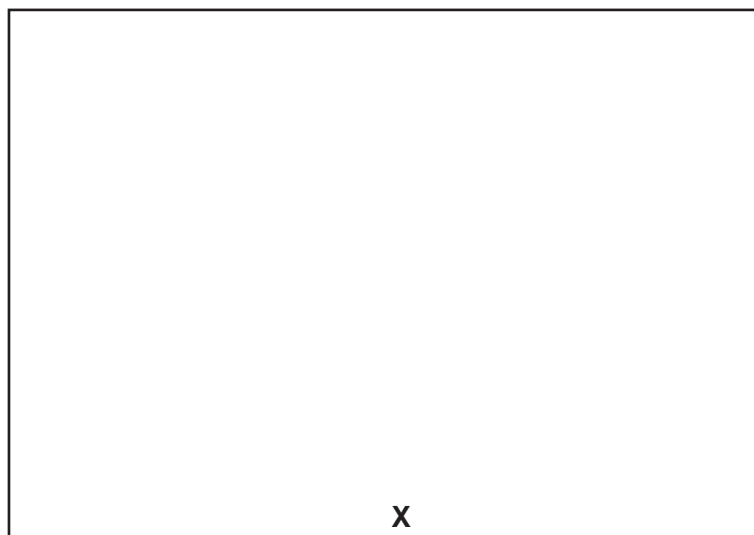
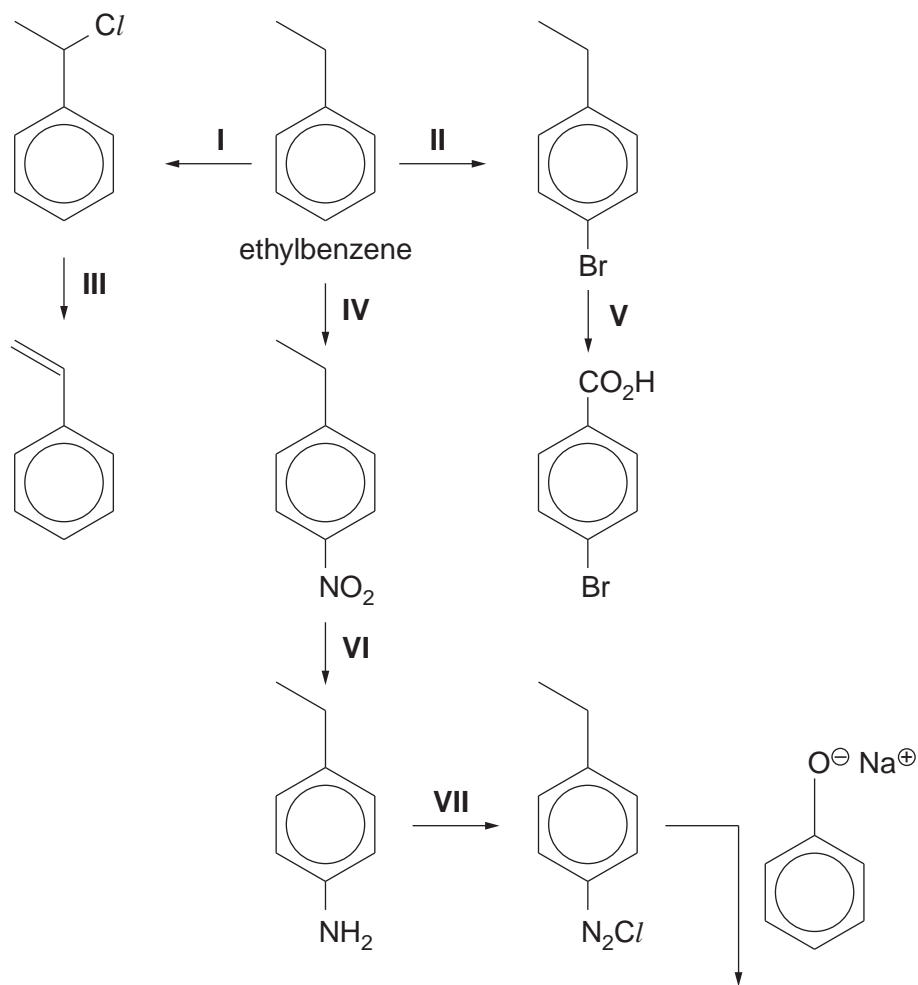
menthone

test

observation [6]

[Total: 8]

4 The following chart shows some reactions of ethylbenzene and compounds produced



(i) Draw the structure of compound **X** in the box provided in the chart above.

- (ii) Suggest reagents and conditions for each of the reactions, writing them in the space below.

reaction I

reaction II

reaction III

reaction IV

reaction V

reaction VI

reaction VII

[Total: 8]

- 5 Chlorine is manufactured by the electrolysis of brine, $\text{NaCl}(\text{aq})$. At the cathode, $\text{H}_2(\text{g})$ and $\text{OH}^-(\text{aq})$ are produced, but the product at the anode depends on the $[\text{NaCl}(\text{aq})]$ in solution. Either $\text{O}_2(\text{g})$ or $\text{Cl}_2(\text{g})$ is produced.

(a) The equation for the cathode reaction is $2\text{H}_2\text{O}(\text{l}) + 2\text{e}^- \rightarrow \text{H}_2(\text{g}) + 2\text{OH}^-(\text{aq})$.

Starting from **neutral** $\text{NaCl}(\text{aq})$, write equations for the production at the anode of

(i) $\text{O}_2(\text{g})$,

(ii) $\text{Cl}_2(\text{g})$

[2]

(b) For electrolysis to occur, the voltage applied to the cell must be at least as large as the E_{cell}^\ominus , as calculated from standard electrode potentials.

Use the *Data Booklet* to calculate E_{cell}^\ominus for the production at the anode of

(i) $\text{O}_2(\text{g})$,

(ii) $\text{Cl}_2(\text{g})$

[2]

(c) (i) By using **one** of the phrases *more positive*, *less positive* or *no change*, use the equations you wrote in (a) to deduce the effect of increasing $[\text{Cl}^-(\text{aq})]$ on

• the E_{anode} for the production of $\text{O}_2(\text{g})$,

• the E_{anode} for the production of $\text{Cl}_2(\text{g})$

(ii) Hence explain why the $\text{Cl}_2(\text{g}) : \text{O}_2(\text{g})$ ratio increases as $[\text{NaCl}(\text{aq})]$ increases.

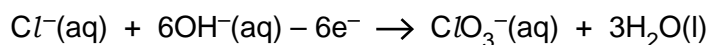
.....

..... [3]

(d) Sodium chlorate(V) is prepared commercially by electrolysis $\text{NaCl}(\text{aq})$ in a cell which allows the cathode and anode electrolytes to mix.

The cathode reaction is the same as that described in (a).

The equation for the anode reaction is



(i) Construct an ionic equation for the overall reaction.

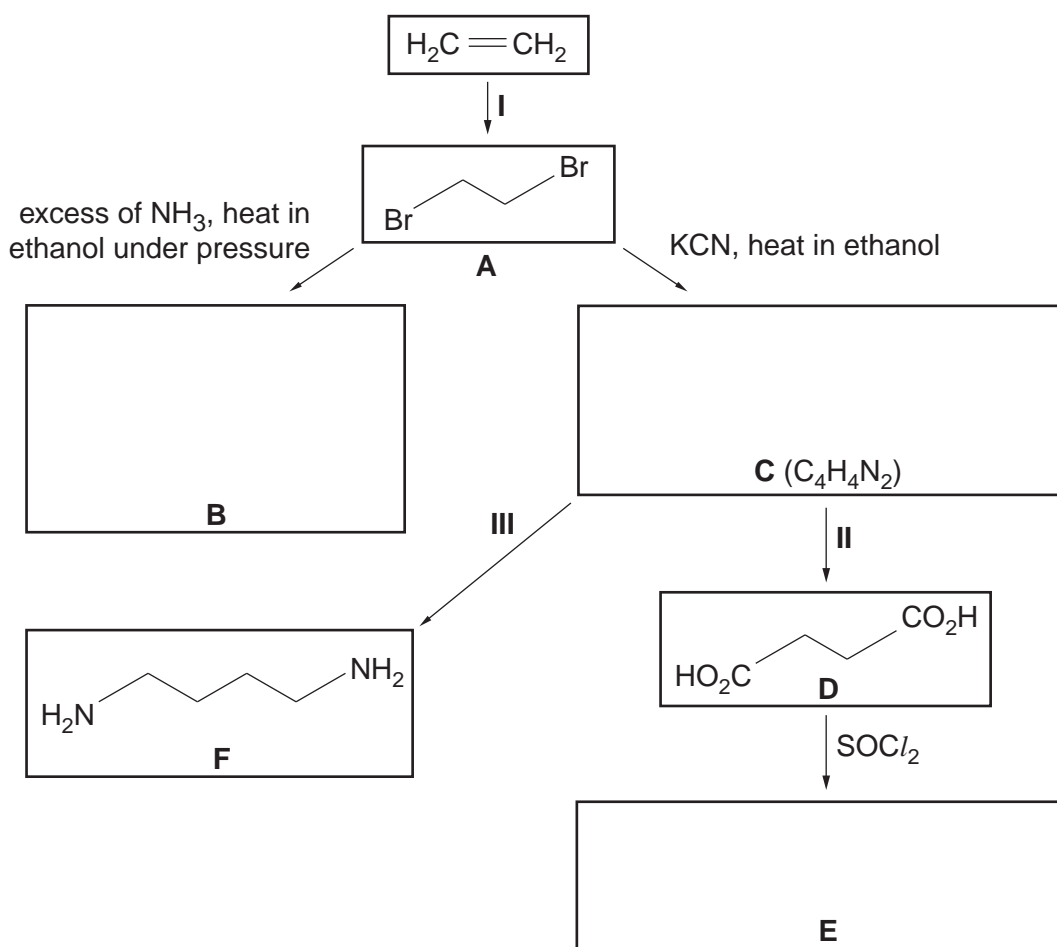
.....

- (ii) Calculate the mass of NaClO_3 that is produced when a current of 250 A is passed through the cell for 60 minutes.

mass of NaClO_3 = g [4]

[Total: 11]

- 6 The following scheme outlines the production of some compounds from ethene.



- (a) (i) Suggest the reagent and conditions for reaction I.

.....

- (ii) Describe the mechanism of reaction I by means of a diagram. Include all whole, partial and induced charges, and represent the movements of electron pairs by curly arrows.

- (b) Suggest the identities of compounds **B**, **C** and **E**, and draw their structures in the space opposite.
- (c) Suggest reagents and conditions for reaction **II**,
.....
reaction **III**.
..... [2]
- (d) During reaction **II** the nitrogen atoms are lost from the organic molecule. Suggest the identity of the nitrogen-containing ion produced during this reaction.
..... [1]
- (e) Compounds **E** and **F** react together to give a polymer and an inorganic product.
- (i) Draw **one** repeat unit of this polymer.
- (ii) Identify the inorganic product.
..... [2]
- (f) A $0.100 \text{ mol dm}^{-3}$ solution of compound **D** has a pH of 2.60.
- (i) Calculate the $[\text{H}^+]$ in this solution.
.....
.....
- (ii) Hence calculate the value of K_a of compound **D**.
.....
..... [2]

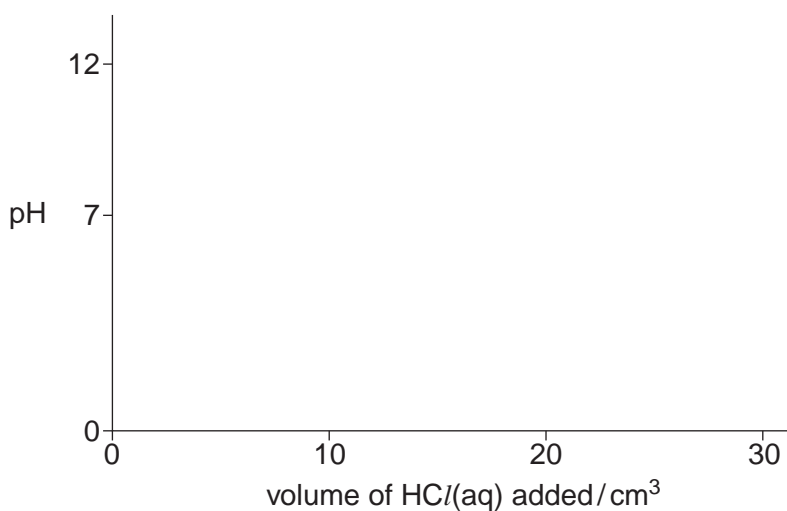
[Total: 13]

- 7 When an aqueous solution of compound **G**, $\text{NH}_2\text{CH}_2\text{CH}_2\text{CH}_2\text{NH}_2$, is titrated with $\text{HCl}(\text{aq})$, two successive acid-base reactions take place.

(a) Write equations for these two acid-base reactions.

.....
.....[2]

- (b) A 0.10mol dm^{-3} solution of **G** has a pH of 11.3. When 30cm^3 of 0.10mol dm^{-3} HCl is added to 10cm^3 of a 0.10mol dm^{-3} solution of **G**, the final pH is 1.6. Using the following axes, sketch the pH changes that occur during this addition of $\text{HCl}(\text{aq})$.



[2]

[Total: 4]

- 8 (a) (i) By means of a clear, labelled diagram, describe the shape of the tin(IV) chloride molecule.

- (ii) Explain the shape of the tin(IV) chloride molecule in terms of its bonding.

.....
.....

[2]

- (b) (i) What would you expect to observe when tin(IV) chloride reacts with water? Suggest an explanation for your answer.

.....
.....
.....

- (ii) Write an equation for the reaction between tin(IV) chloride and water.

.....

[3]

[Total: 5]

Section B

Answer **all** questions in the spaces provided.

- 9 DNA is an extremely important chemical in human cells. It has been described as the 'blueprint of life'.

(a) What **three** types of compound are linked together in DNA?

.....[1]

(b) DNA consists of two strands linked together. Draw a **block diagram** to illustrate this and showing **two** repeat units in the backbones, labelling the components and showing and labelling the bonds between the strands.

[4]

(c) DNA is used to encode for the production of a particular protein. Put the following biochemical structures in the correct sequence from the use of DNA as a template to the formation of the protein by writing their names in the relevant box below.

tRNA

mRNA

ribosomes

DNA → → → → protein [2]

10 Instrumental methods of analysis have become increasingly important in recent years. The use of chromatography to separate substances, and NMR spectroscopy to identify them, have become routine in many laboratories.

(a) Chromatography relies on either partition or adsorption to help separate substances.

(i) Briefly explain how each method brings about separation.

partition

.....

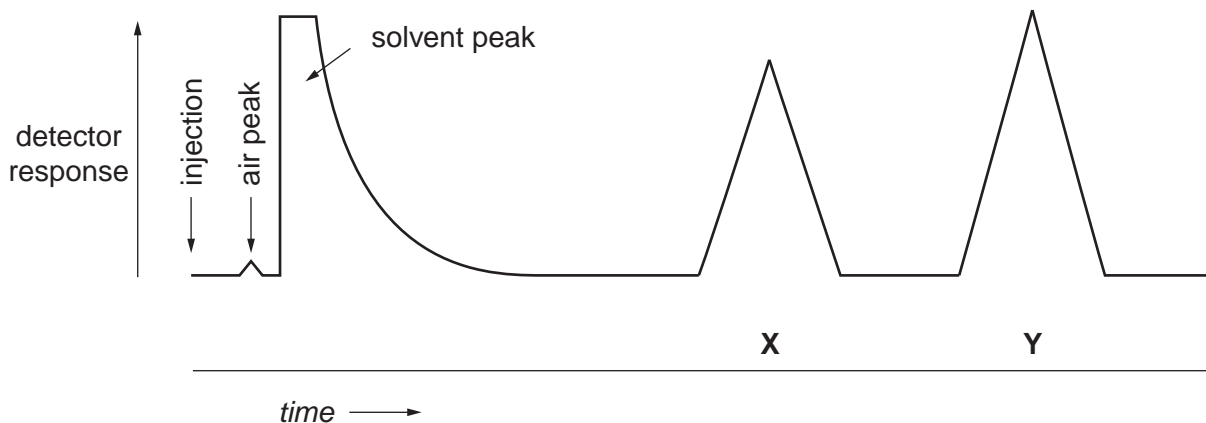
adsorption

.....

(ii) The table shows three different techniques of chromatography. Identify which separation method, *partition* or *adsorption*, applies to each.

technique	separation method
paper chromatography	
thin-layer chromatography	
gas/liquid chromatography	

(iii) The diagram represents the output from gas/liquid chromatography carried out on a mixture.



Determine the percentage of each of the two components X and Y in the mixture.

(b) NMR spectroscopy is a very important analytical technique for use with organic compounds.

(i) Why is NMR spectroscopy particularly useful for organic compounds?

.....
.....

(ii) Two molecules, propanal and propanone, have the same molecular formula, C_3H_6O . Draw the displayed formula of each compound and explain briefly how NMR spectroscopy can distinguish between the two structures.

.....
.....
.....
.....

[4]

[Total: 9]

11 One of the greatest challenges facing scientists today is the development of effective drugs to treat different forms of cancer.

- (a) Drugs can be introduced into the body by injection or by mouth. Taking drugs by injection avoids the drug being broken down in the digestive system. State **two** other advantages of giving drugs by injection.

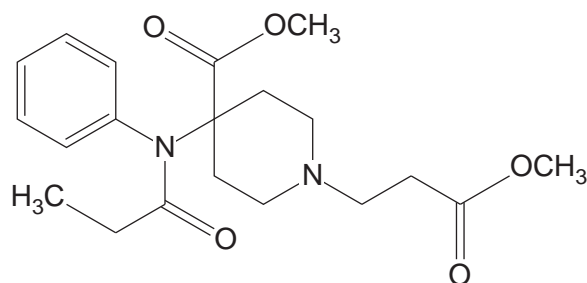
.....

.....

.....

..... [2]

- (b) The drug *Ultiva* has been developed to treat ovarian cancer, and is usually given by injection.



Ultiva

Study the structure of *Ultiva* and draw a **circle** around **two different** functional groups that could be broken down in the digestive system. [2]

- (c) One way of avoiding the breakdown of drugs in the body is to use a specially designed nanoparticle which encloses the drug. If the nanoparticles are made of a particular sort of polymer, they absorb water at the slightly acidic pH inside some cells, increasing their diameter from around 100 nm to around 1000 nm. This spreads out the polymer chains allowing release of the drug.

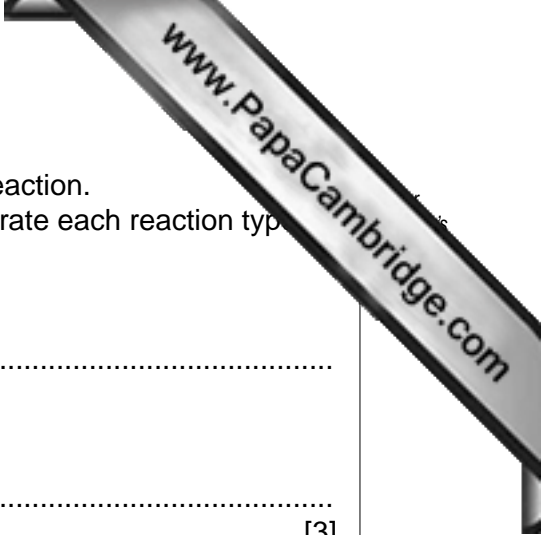
- (i) Other than absorbing water, suggest a property this polymer would need to possess for its use in drug delivery.

.....

.....

- (ii) Why would this method of release **not** work if the nanoparticles were taken by mouth?

..... [2]



(d) Polymers may be formed by two different types of chemical reaction.
Name the two types of reaction and write an equation to illustrate each reaction type.

name

equation

name

equation

[3]

(e) The breakdown of polymers, such as carbohydrates and proteins in the body is important for digestion. What type of reaction is generally involved?

..... [1]

[Total: 10]

