



UNIVERSITY OF CAMBRIDGE INTERNATIONAL EXAMINATIONS  
General Certificate of Education Advanced Subsidiary Level and Advanced Level



---

**GEOGRAPHY**

**9696/03**

Paper 3 Advanced Human Options

**October/November 2008**

INSERT

**1 hour 30 minutes**

---

**READ THESE INSTRUCTIONS FIRST**

This Insert contains all the Figures and the Table referred to in the questions.

---

This document consists of **4** printed pages.



Fig. 1 for Question 1

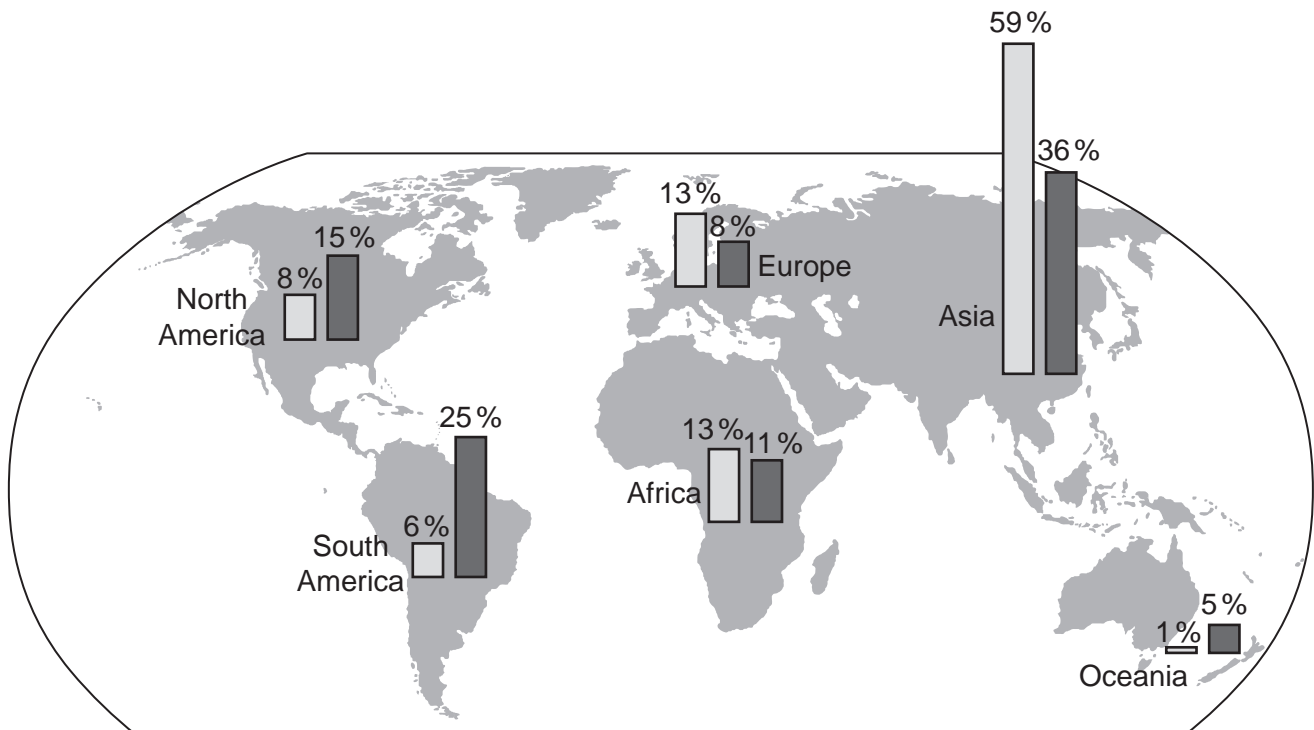
## Seven possible components of "a second green revolution" for India

Improvements in:

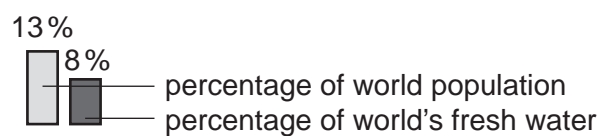
- 1 soil health
- 2 water management
- 3 access to affordable credit
- 4 the development and introduction of appropriate technologies
- 5 the marketing of produce
- 6 seeds, through the application of science and biotechnology
- 7 government commitment to the agricultural sector and to agricultural research.

Fig. 2 for Question 4

## Population and fresh water, by world region, 2003



## Key



Figs 3A, 3B and 3C for Question 6

Possible levels of demand for, and supply of, tourism services in a tourist area or resort

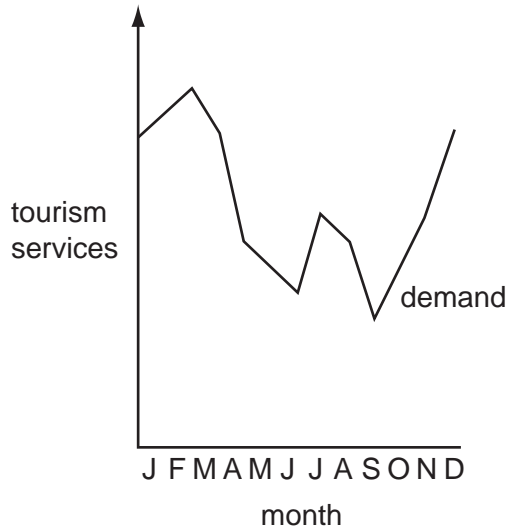
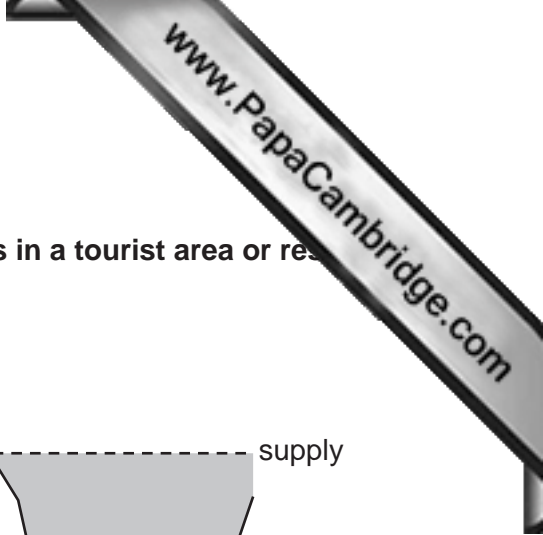


Fig. 3A

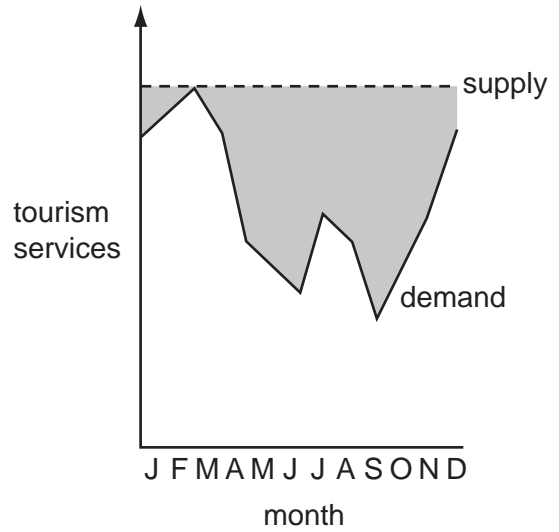


Fig. 3B

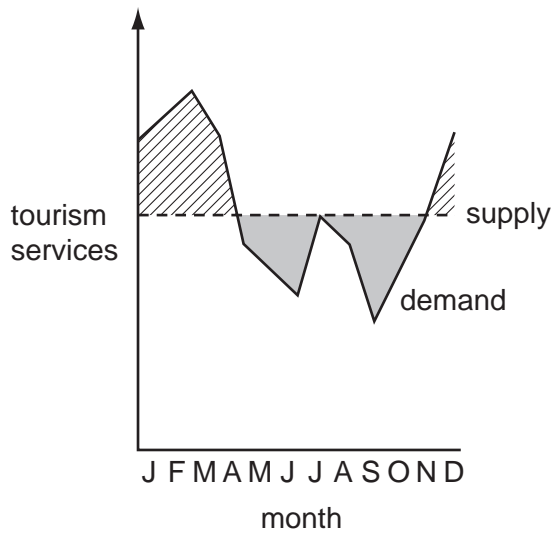


Fig. 3C

Key





-  demand
-  supply
-  low occupancy and loss of potential revenue
-  overcrowding and loss of potential revenue

Table 1 for Question 7

Percentage employment by sector for the world and selected world regions, 1994 and 2004

	1994			2004		
	P	S	T	P	S	T
<i>World</i>	45.6	21.3	33.1	42.8	20.3	36.9
MEDCs	5.3	29.0	65.7	3.9	24.9	71.2
East Asia	57.7	26.3	16.0	57.7	23.6	18.7
SE Asia and the Pacific	55.8	14.8	29.4	44.3	20.3	35.4
South Asia	64.5	13.3	22.2	62.2	13.7	24.1
Latin America and the Caribbean	24.3	20.3	55.4	17.6	20.2	62.2
Middle East and North Africa	29.7	20.7	49.6	25.7	27.2	47.1
Sub-Saharan Africa	71.0	8.5	20.5	64.5	8.8	26.7

**Key**

- P** primary sector (excluding mining)  
**S** secondary sector (including mining)  
**T** tertiary sector (including quaternary)