



UNIVERSITY OF CAMBRIDGE INTERNATIONAL EXAMINATIONS  
General Certificate of Education Advanced Subsidiary Level and Advanced Level



---

**GEOGRAPHY**

**9696/13**

Paper 1 Core Geography

**October/November 2010**

INSERT

**3 hours**

---

**READ THESE INSTRUCTIONS FIRST**

This Insert contains all the Figures referred to in the questions.

---

This document consists of **7** printed pages and **1** blank page.

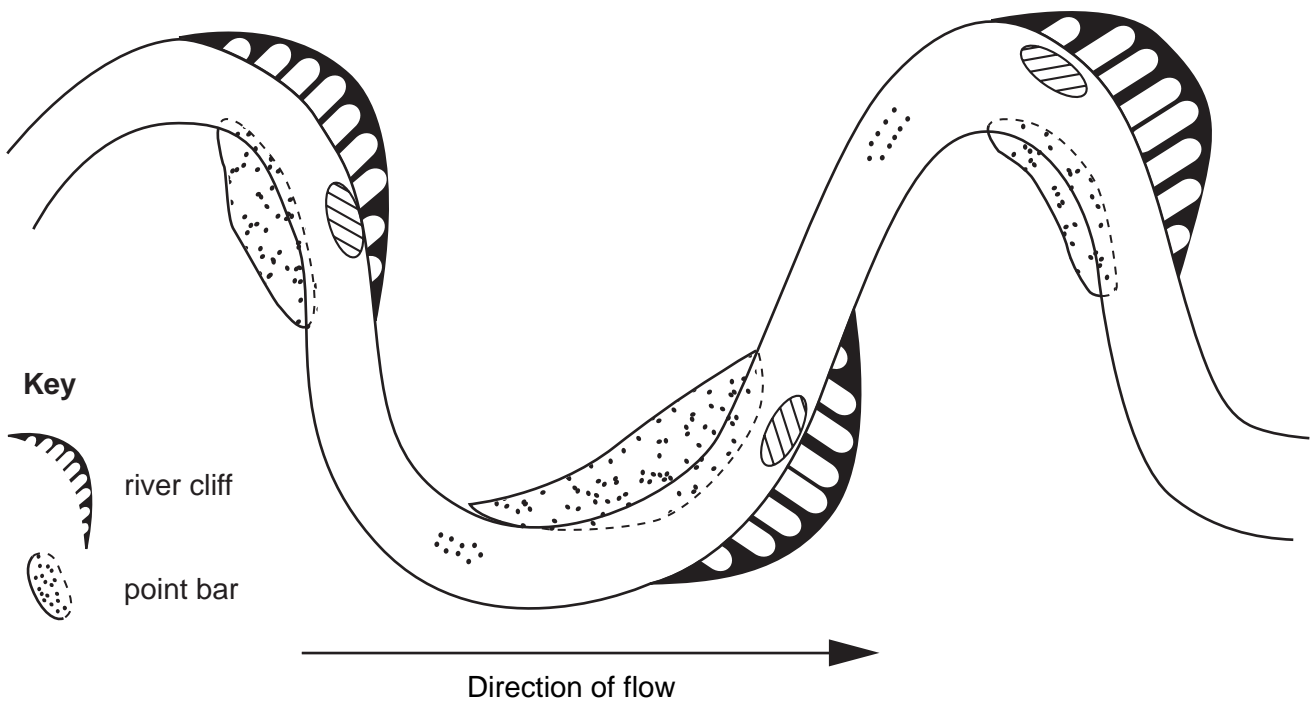


CANDIDATE NAME

CENTRE NUMBER

CANDIDATE NUMBER

**Fig. 1 for Question 1**  
**A meandering river channel**



If you have answered Question 1, attach this page to your Answer Booklet/Paper at the end of the examination.

Fig. 2 for Question 2

Some possible consequences of global warming in North and South America

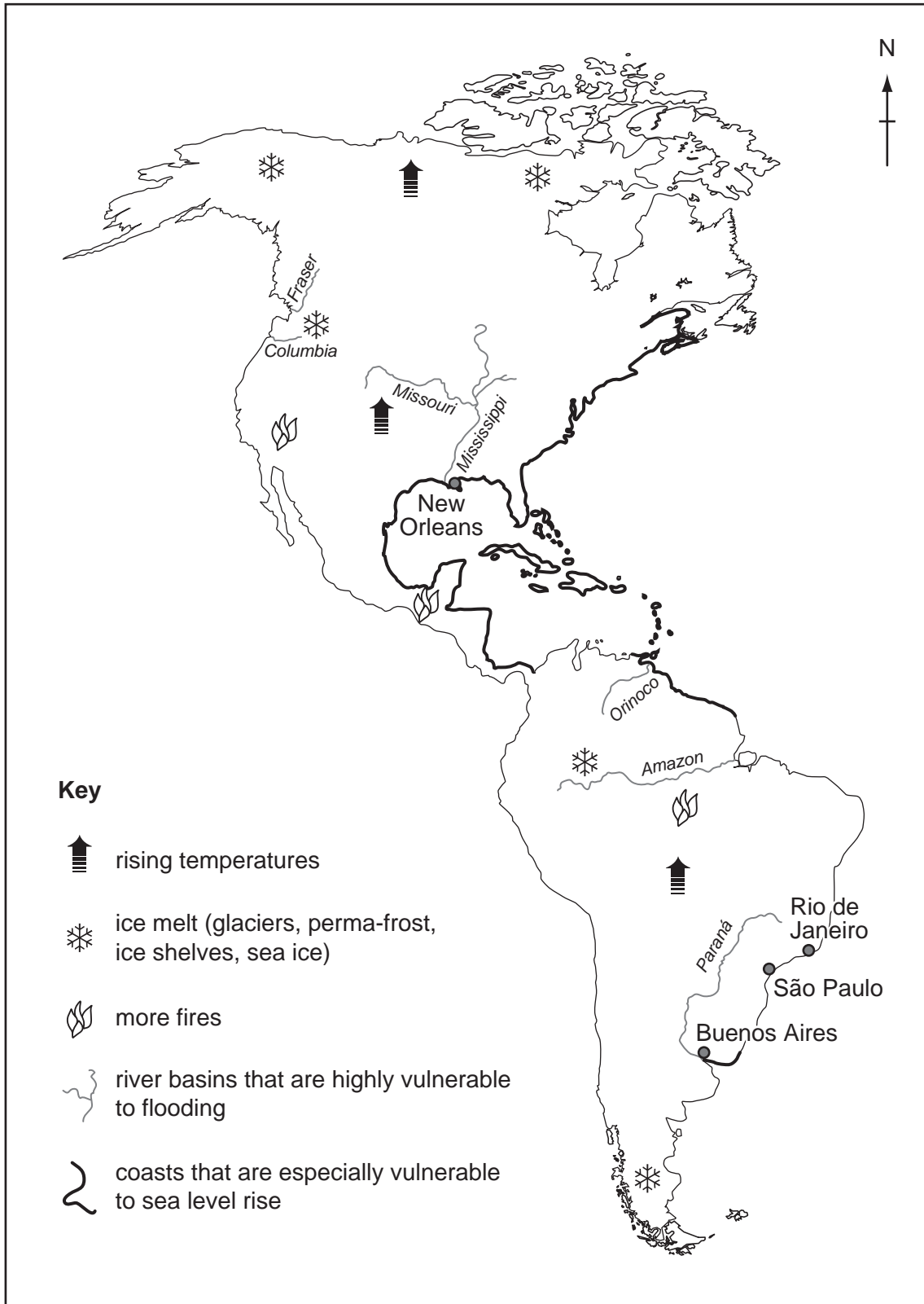


Fig. 3 for Question 3

Two types of mass movement

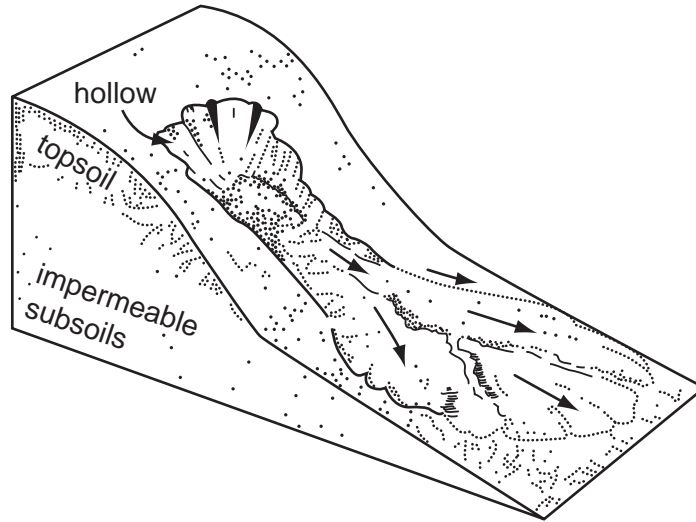


Fig. 3A

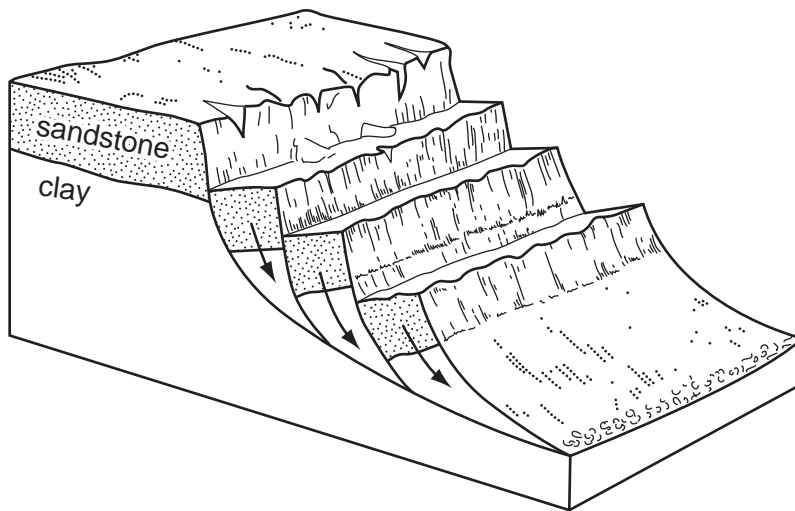


Fig. 3B

Fig. 4 for Question 4

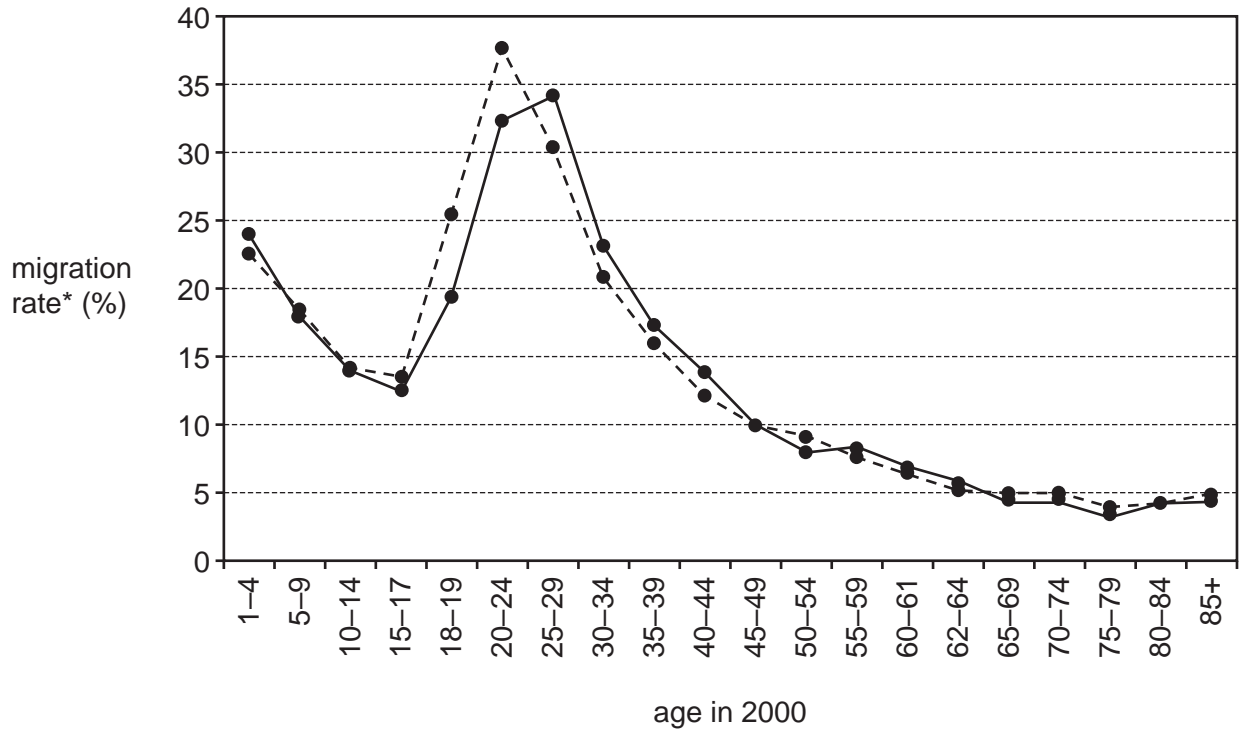
Family planning poster from Bolivia, an LEDC in South America



The headline reads 'Family planning is the right of everyone'.

Fig. 5 for Question 5

## Age and the rate of migration, USA, 2000



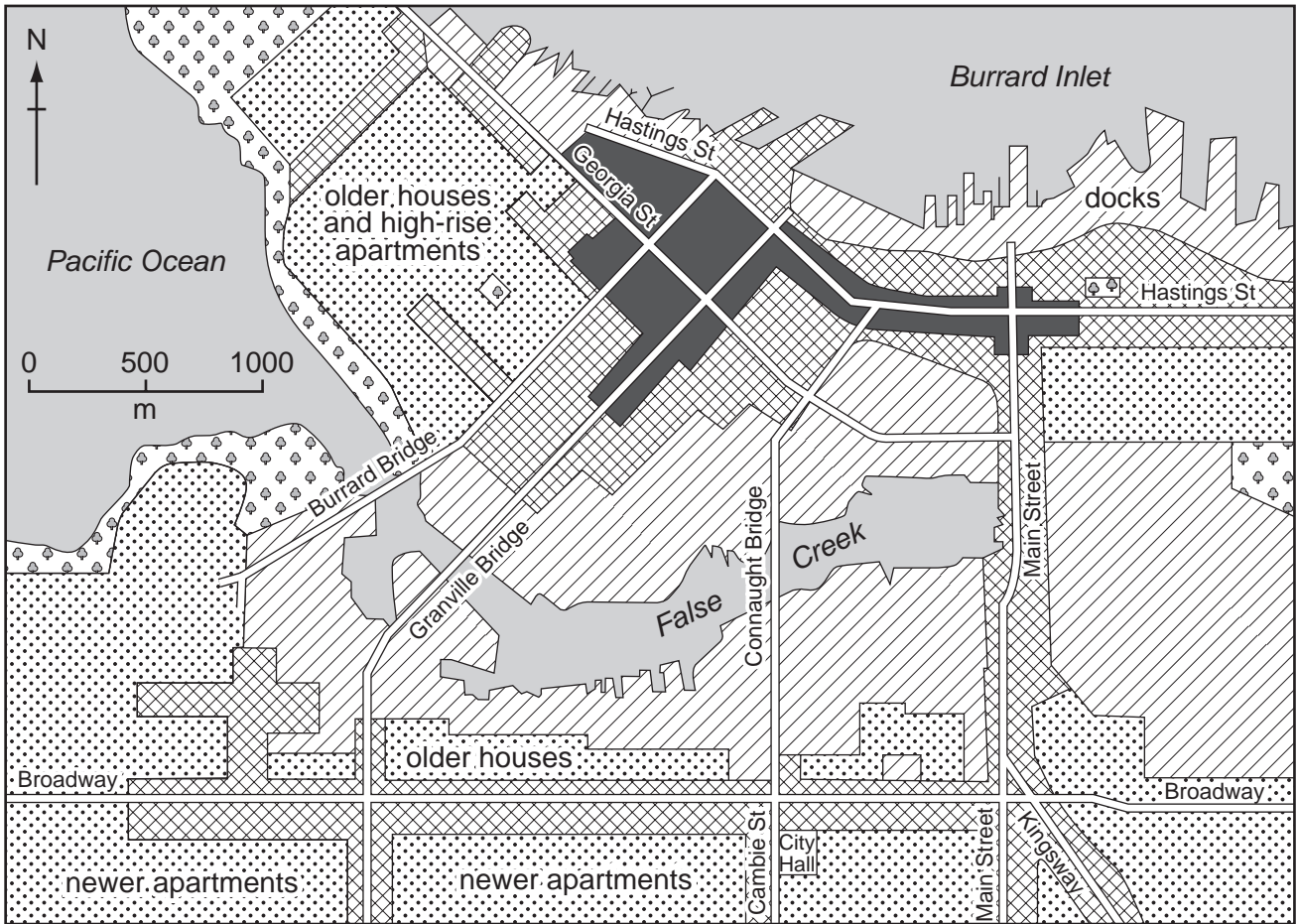
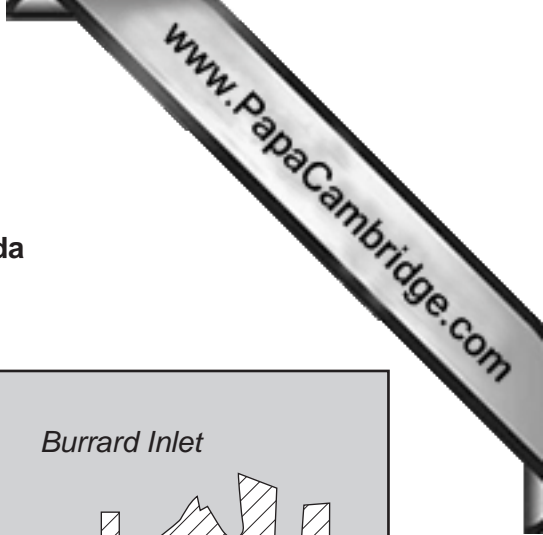
\*migration rate is the percentage of people who moved in one year

**Key**

- males
- females

Fig. 6 for Question 6

Land-use in central Vancouver, Canada



**Key**

-  CBD core
-  shops and offices
-  industry
-  housing
-  park/recreational area
-  water
-  main road

