



UNIVERSITY OF CAMBRIDGE INTERNATIONAL EXAMINATIONS
General Certificate of Education Advanced Subsidiary Level and Advanced Level

www.PapaCambridge.com

GEOGRAPHY

9696/22

Paper 2 Advanced Physical Options

October/November 2010

INSERT

1 hour 30 minutes

READ THESE INSTRUCTIONS FIRST

This Insert contains all the Figures and the Photograph referred to in the questions.

This document consists of **4** printed pages.



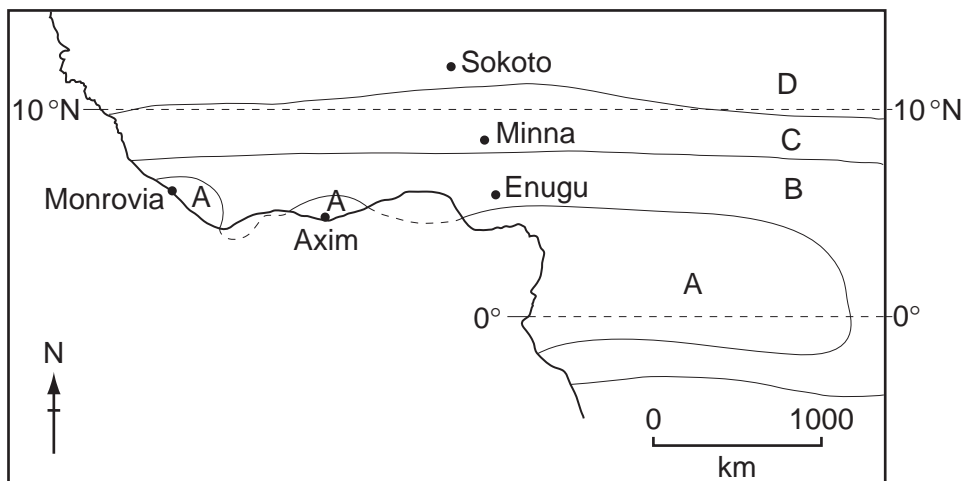
Fig. 1A for Question 2

Rainfall and natural vegetation in part of West Africa

station	Axim Monrovia A	Enugu B	Minna C	Sokoto D
number of wet (dry) months	10–12 (0–2)	9–10 (2–3)	7–9 (3–5)	4–6 (6–8)
mean annual rainfall (mm)	mainly > 2000	mainly > 1500	mainly > 1000	750–1000
vegetation				
	tropical rainforest	seasonally humid forest	wet savanna	dry savanna

Fig. 1B for Question 2

Map of the average duration of the wet (and dry) season in part of West Africa



Key

number of wet (dry) months

A 10–12 (0–2)

B 9–10 (2–3)

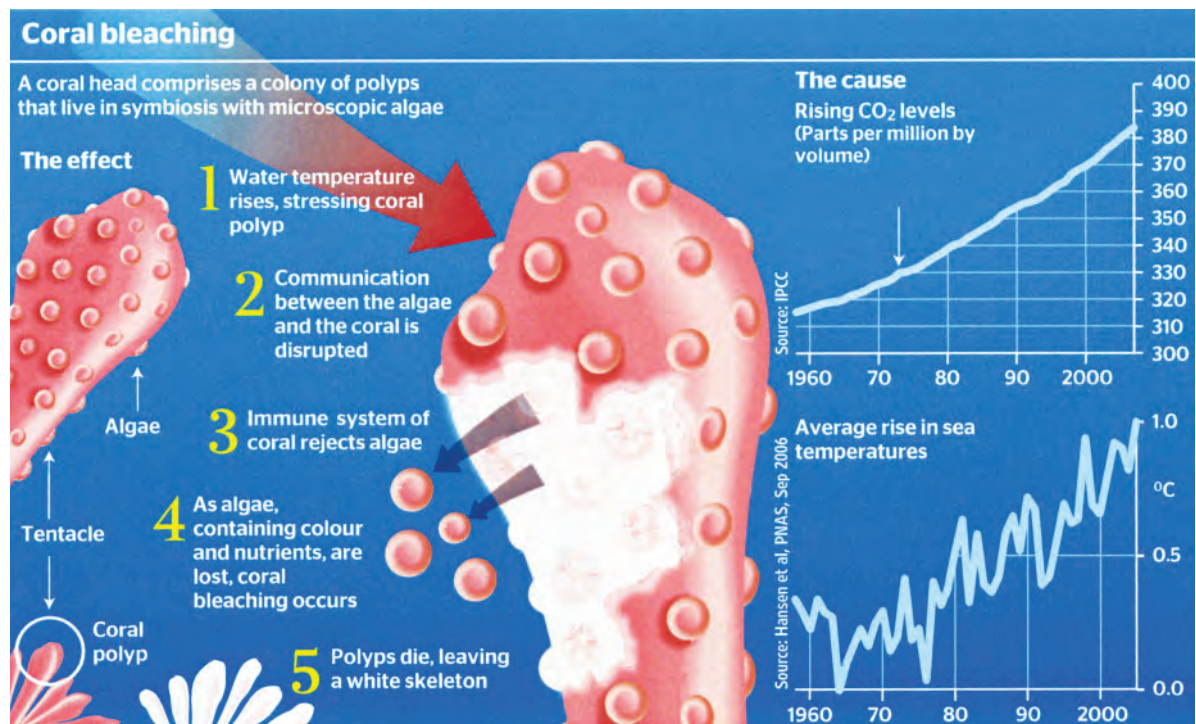
C 7–9 (3–5)

D 4–6 (6–8)

Fig. 2 for Question 4

Extract from a newspaper report on the future of coral reefs

Great Barrier Reef 'will be no more within two decades'



Frank Pope *Oceans Correspondent*

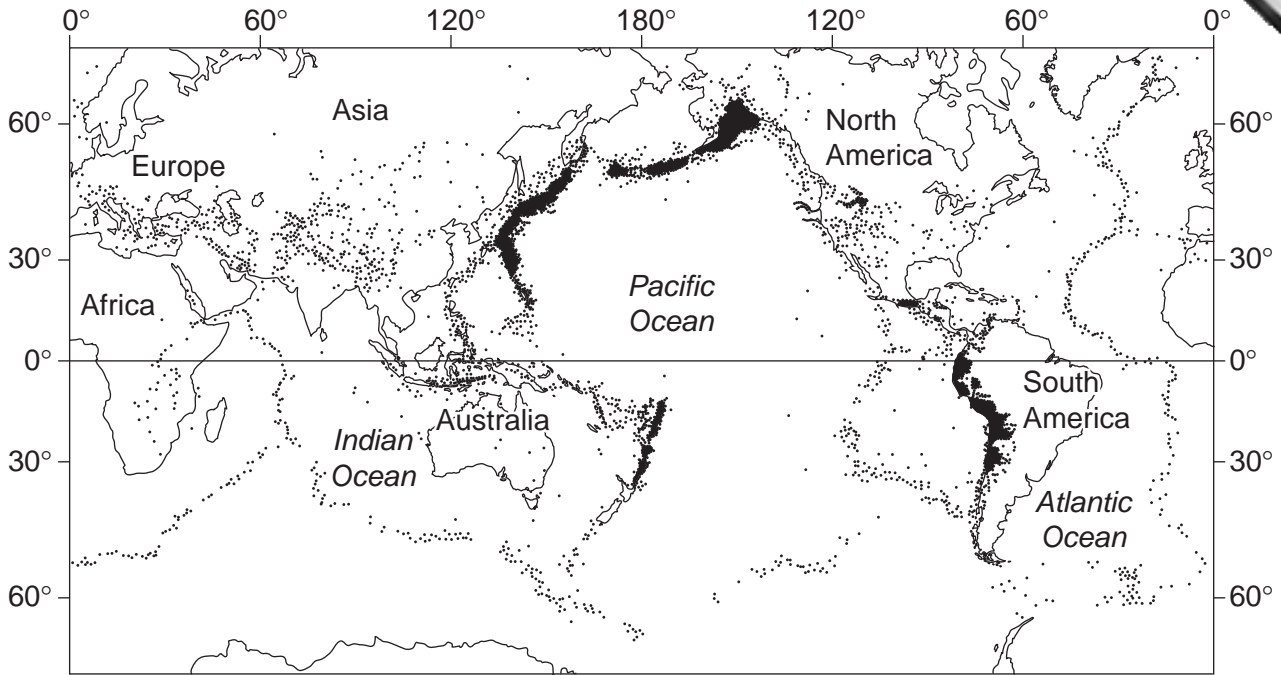
The Great Barrier Reef will be so degraded by warming waters that it will be unrecognisable within 20 years, an eminent marine scientist has said.

Charlie Veron, former chief scientist of the Australian Institute of Marine Science, told *The Times*: "There is no way out, no loopholes. The Great Barrier Reef will be over within 20 years or so."


Once carbon dioxide had hit the levels predicted for between 2030 and 2060, all coral reefs were doomed to extinction, he said. "They would be the world's first global ecosystem to collapse. I have the backing of every coral reef scientist, every research organisation. I've spoken to them all. This is critical. This is reality."

Fig. 3 for Question 6

Global distribution of earthquake epicentres



Key

 earthquake epicentres

Photograph A for Question 8

Landforms in the Sahara desert



Permission to reproduce items where third-party owned material protected by copyright is included has been sought and cleared where possible. Every reasonable effort has been made by the publisher (UCLES) to trace copyright holders, but if any items requiring clearance have unwittingly been included, the publisher will be pleased to make amends at the earliest possible opportunity.