



Cambridge IGCSE™

CANDIDATE
NAME

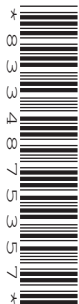
| |
|--|
| |
|--|

CENTRE
NUMBER

| | | | | |
|--|--|--|--|--|
| | | | | |
|--|--|--|--|--|

CANDIDATE
NUMBER

| | | | |
|--|--|--|--|
| | | | |
|--|--|--|--|



BIOLOGY

0610/32

Paper 3 Theory (Core)

May/June 2022

1 hour 15 minutes

You must answer on the question paper.

No additional materials are needed.

INSTRUCTIONS

- Answer **all** questions.
- Use a black or dark blue pen. You may use an HB pencil for any diagrams or graphs.
- Write your name, centre number and candidate number in the boxes at the top of the page.
- Write your answer to each question in the space provided.
- Do **not** use an erasable pen or correction fluid.
- Do **not** write on any bar codes.
- You may use a calculator.
- You should show all your working and use appropriate units.

INFORMATION

- The total mark for this paper is 80.
- The number of marks for each question or part question is shown in brackets [].

This document has **16** pages. Any blank pages are indicated.

1 Fig. 1.1 is a photograph of a plant.



Fig. 1.1

(a) (i) Draw **two** arrows on Fig. 1.1 to show the direction of movement of water into and out of the plant. [2]

(ii) State the name of the type of tissue that transports water in a plant.
 [1]

(b) (i) Complete the definition of the term transpiration.
 Transpiration is the loss of water vapour from plant leaves by
 of water at the surfaces of
 cells, followed by diffusion of water vapour through the [3]

(ii) Fig. 1.2 is a graph showing the effect of temperature on the rate of transpiration from the upper and lower surfaces of leaves.

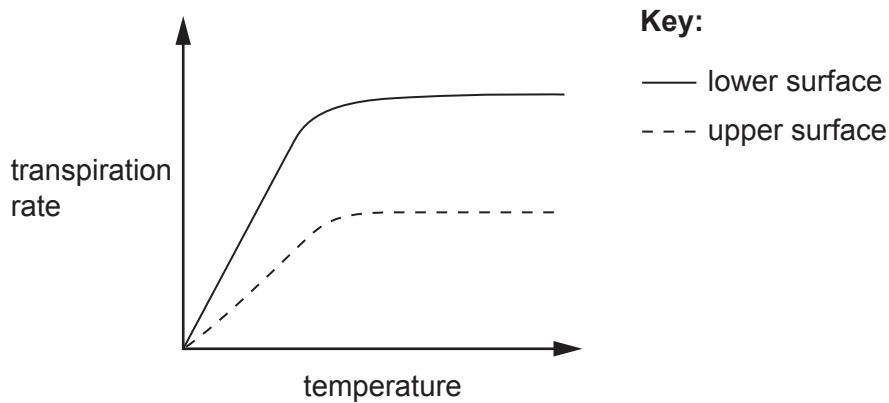


Fig. 1.2

State **two** conclusions for the data shown in Fig. 1.2.

1

.....

.....

2

.....

.....

[2]

(c) State the effect of increasing humidity on the rate of transpiration.

.....

.....

.....

[1]

(d) Fig. 1.3 is a diagram of the water cycle.

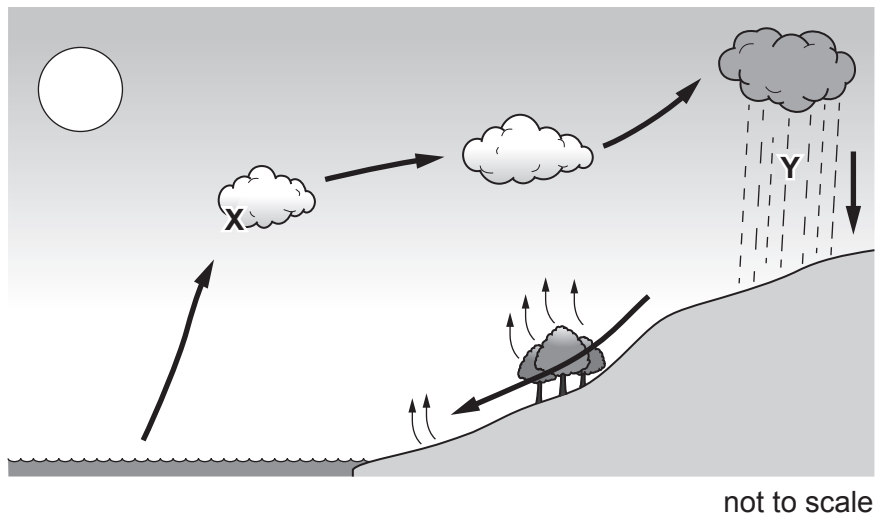


Fig. 1.3

Identify processes **X** and **Y** in Fig. 1.3.

X

Y

[2]

[Total: 11]

2 (a) Define the term homeostasis.

.....

.....

.....

.....

..... [2]

(b) The box on the left shows the beginning of a sentence.

The boxes on the right show some sentence endings.

Draw **three** straight lines to make three correct sentences about the brain.

The brain

and spinal cord are part of the peripheral nervous system.

coordinates body functions.

contains receptors that detect the temperature of the blood.

produces insulin.

receives impulses from motor neurones.

receives impulses from the optic nerve.

[3]

(c) Fig. 2.1 shows part of a cross-section of mammalian skin.

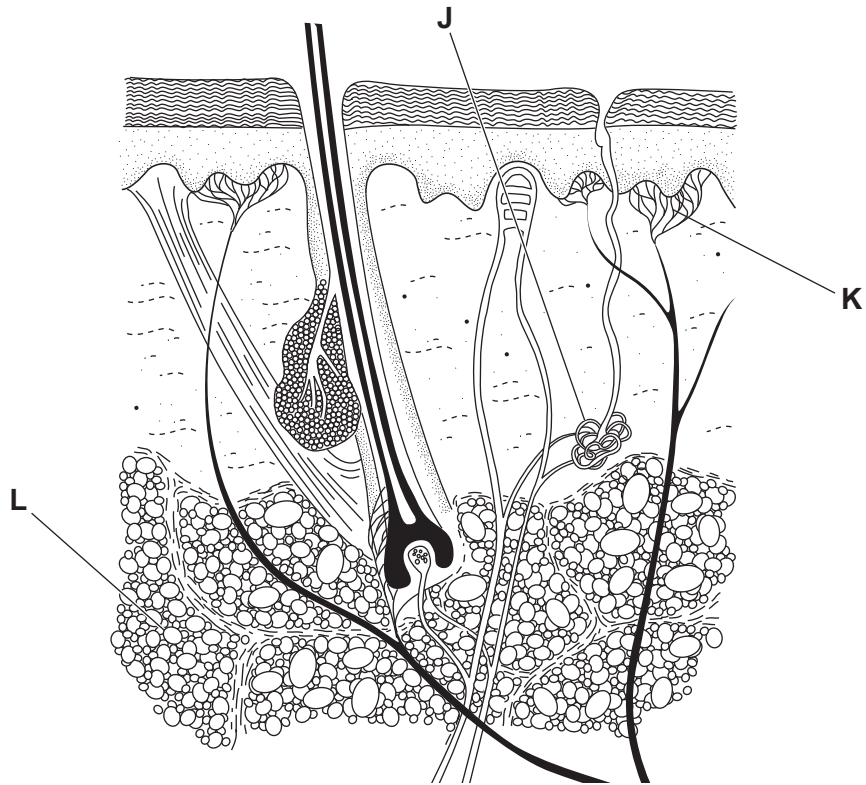


Fig. 2.1

State the names of J, K and L in Fig. 2.1.

J

K

L

[3]

(d) Describe how structures in the body help to keep the body warm in a cool environment.

.....
.....
.....
.....
.....
.....
.....
.....

[3]

[Total: 11]

- 3 (a) Fig. 3.1 is a diagram showing part of the human alimentary canal and associated organs.

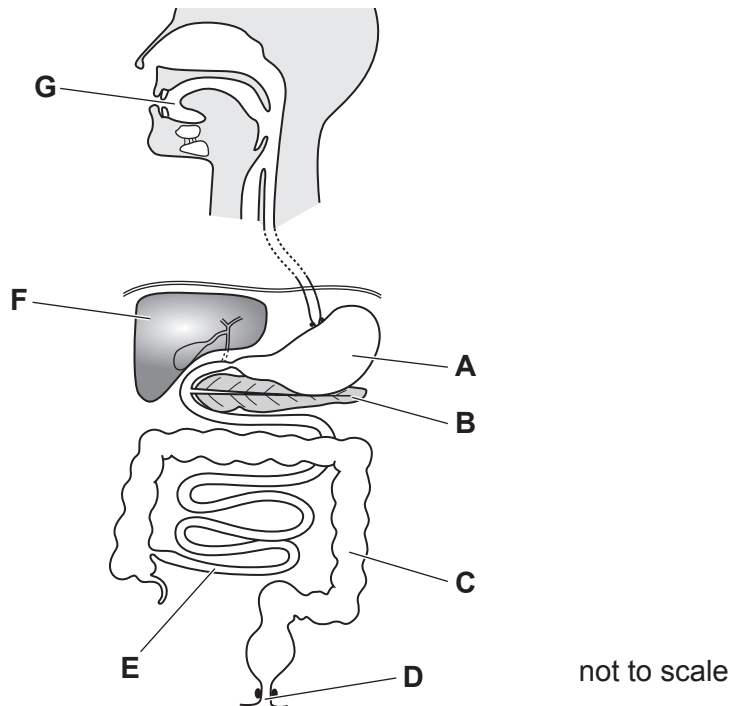


Fig. 3.1

- (i) The boxes on the left show three letters from Fig. 3.1 that identify three different organs.

The boxes in the middle show the names of some of the organs in Fig. 3.1.

The boxes on the right show some functions of organs.

Draw **three** lines to link each letter to the name of the organ the letter identifies in Fig. 3.1.

Draw **three** more lines to link these organs to a correct function.

Draw a total of **six** lines.

| letter from Fig. 3.1 | name of the organ | function |
|-------------------------|-------------------|--------------|
| D | anus | absorption |
| E | ileum | assimilation |
| G | mouth | egestion |
| | pancreas | ingestion |

[6]

(ii) State the letter in Fig. 3.1 that identifies the liver **and** outline **one** function of the liver.

letter in Fig. 3.1

function

.....

[2]

(b) Describe the effects of excessive alcohol consumption.

.....

 [4]

(c) Protein is a large molecule.

Table 3.1 shows the names of some large molecules, the enzymes that catalyse the breakdown of these large molecules and the smaller molecules they are made from.

Complete Table 3.1 by writing the correct large molecule, enzymes and small molecule in the boxes.

Table 3.1

| large molecules | enzymes | small molecules |
|-----------------|---------|--------------------------|
| protein | | amino acids |
| | amylase | glucose |
| fats and oils | | fatty acids and |

[4]

[Total: 16]

[Turn over

4 Fig. 4.1 is a drawing of a rainforest food web.

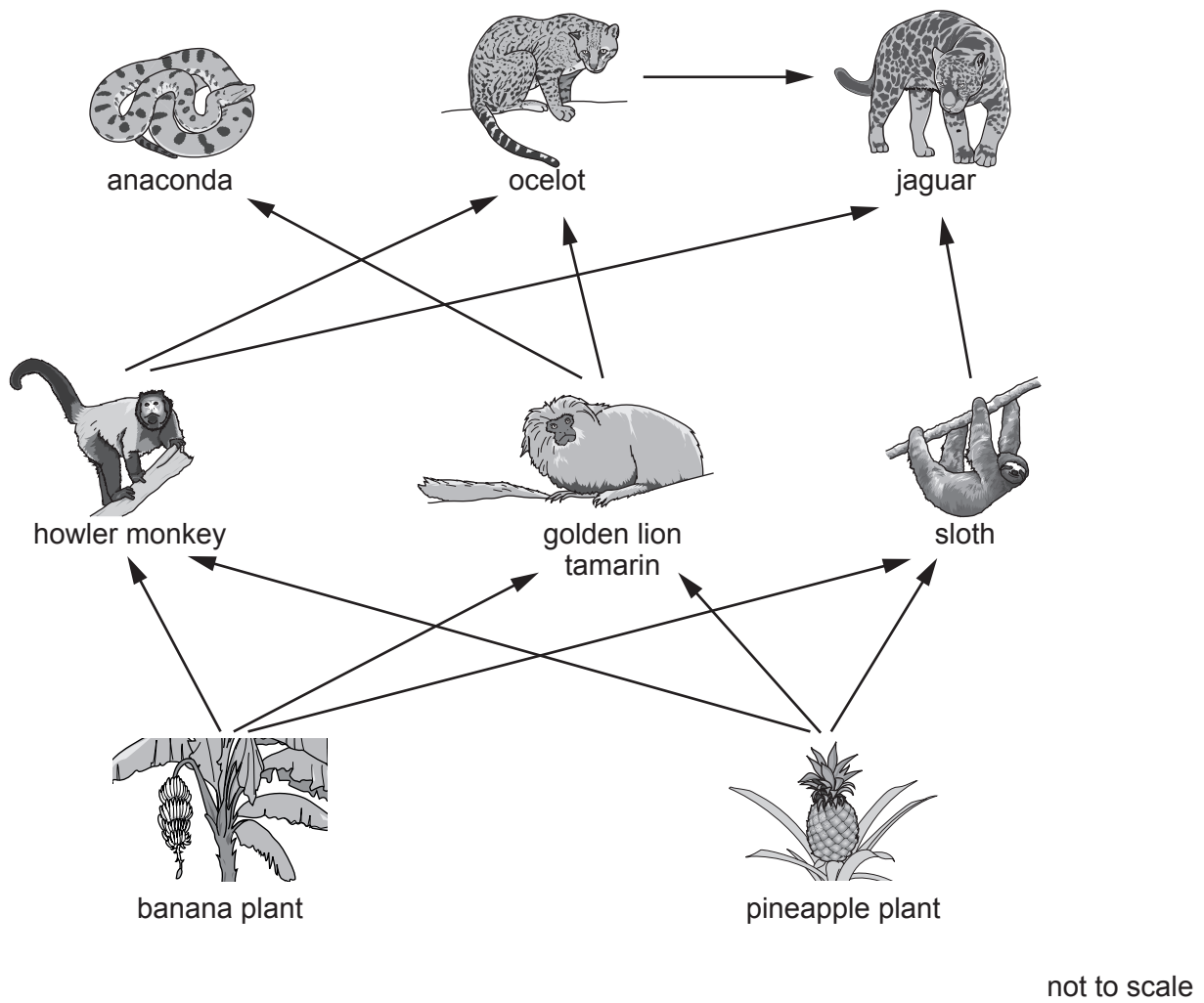
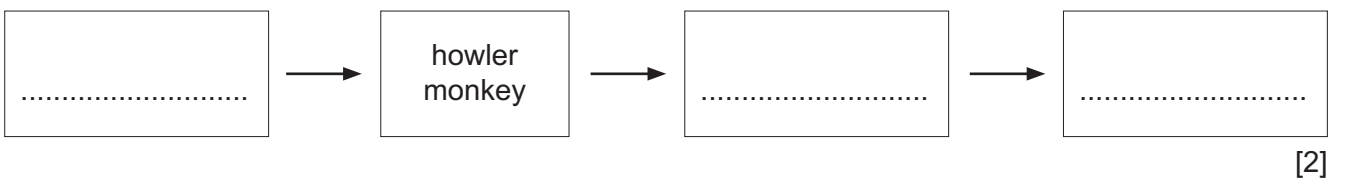


Fig. 4.1

- (a) (i) State the name of **one** producer shown in Fig. 4.1.
 [1]
- (ii) State the name of **one** herbivore shown in Fig. 4.1.
 [1]
- (iii) State the number of carnivore species shown in Fig. 4.1.
 [1]
- (iv) Use the information in Fig. 4.1 to complete the food chain that contains the howler monkey and three other organisms.



[2]

- (v) Overhunting of golden lion tamarins caused the population of anacondas and sloths to change.

Explain why the populations of:

- anacondas decrease
- sloths increase.

anacondas

.....

.....

sloths

.....

.....

[2]

- (vi) State the principal source of energy for food webs.

..... [1]

- (b) Conservationists counted the number of organisms in each feeding level for one of the food chains in a rainforest.

The data were used to draw a pyramid of numbers. Table 4.1 shows the data.

Table 4.1

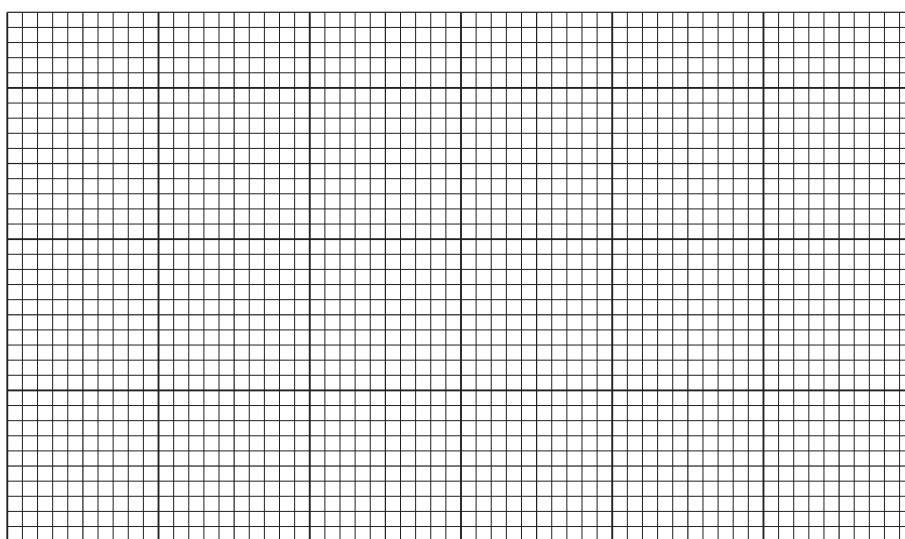
| feeding level | number of organisms | width of the bar in the pyramid of numbers/cm |
|--------------------|---------------------|---|
| producer | 4 | 0.4 |
| primary consumer | 100 | 10.0 |
| secondary consumer | 26 | |
| tertiary consumer | 8 | 0.8 |

- (i) Complete Table 4.1 by calculating the width of the bar for the secondary consumer feeding level.

..... cm [1]

- (ii) Using the information in Table 4.1 and your answer to **4(b)(i)**, draw a pyramid of numbers on the grid. Each small square on the grid is 0.2 cm wide.

Label each bar with the feeding level.



[4]

- (c) Deforestation is a cause of habitat loss for many organisms.

List **three** other undesirable effects of deforestation.

1

2

3

[3]

[Total: 16]

- 5 (a) Blood group is inherited. There are four human blood groups: A, B, AB and O.

Surveys were carried out in two different countries to find out the percentage of the population in each blood group.

The results are shown in Fig. 5.1.

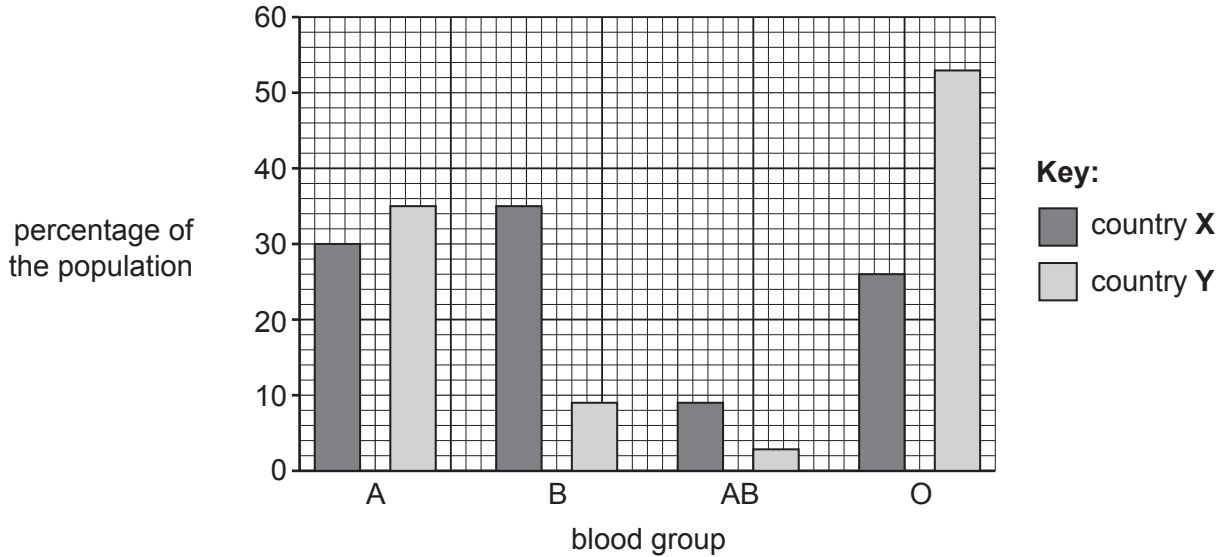


Fig. 5.1

- (i) Complete the sentences that describe the data shown in Fig. 5.1.

The rarest blood group in both countries is

In country **X** blood group is the most common but in country **Y** it is blood group

The percentage of the population of country **X** that has blood group **A** is%.

[4]

- (ii) Suggest the type of variation shown in Fig. 5.1 and give a reason for your choice.

type of variation

reason

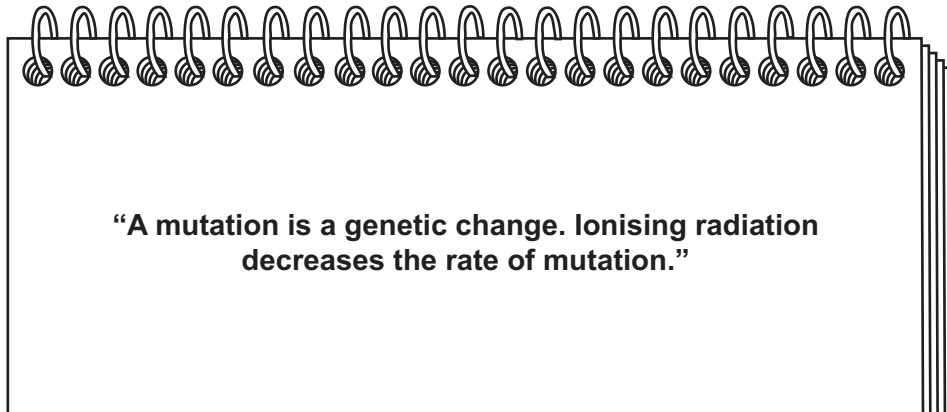
.....

.....

[2]

(b) Mutations can create variation.

A student made some statements about mutations in their notebook.



Identify **one** incorrect word in the sentences.

..... [1]

[Total: 7]

6 Pathogens in food can cause diarrhoea.

(a) Describe diarrhoea and state how diarrhoea can be treated.

.....
.....
.....
.....
..... [2]

(b) Describe ways of preventing the spread of diseases that are caused by pathogens in food.

.....
.....
.....
.....
.....
.....
.....
.....
..... [4]

[Total: 6]

7 (a) A student investigated plant growth responses.

A seedling was attached to a support stand and placed under a lamp.

(i) Complete Fig. 7.1 by drawing the expected position of the root **and** shoot after seven days of growth.

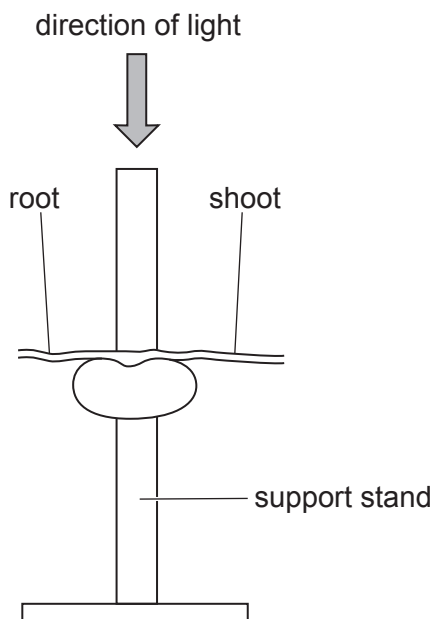


Fig. 7.1

[2]

(ii) State the type of growth response plants show in response to the direction of light.

..... [1]

(iii) State the type of nuclear division that is used for growth.

..... [1]

(b) Seeds need certain factors for germination.

Circle three factors that are needed for germination.

- carbon dioxide
- iron
- nitrogen
- oxygen
- suitable temperature
- water
- vitamin C

[3]

(c) Complete the sentences.

Seeds contain proteins for the of developing shoots and roots. Proteins contain the elements , oxygen, and nitrogen.

The new leaves of a seedling need the mineral ion to make the green pigment

This green pigment is needed to carry out the process of, in the presence of light.

[6]

[Total: 13]

BLANK PAGE

Permission to reproduce items where third-party owned material protected by copyright is included has been sought and cleared where possible. Every reasonable effort has been made by the publisher (UCLES) to trace copyright holders, but if any items requiring clearance have unwittingly been included, the publisher will be pleased to make amends at the earliest possible opportunity.

To avoid the issue of disclosure of answer-related information to candidates, all copyright acknowledgements are reproduced online in the Cambridge Assessment International Education Copyright Acknowledgements Booklet. This is produced for each series of examinations and is freely available to download at www.cambridgeinternational.org after the live examination series.

Cambridge Assessment International Education is part of Cambridge Assessment. Cambridge Assessment is the brand name of the University of Cambridge Local Examinations Syndicate (UCLES), which is a department of the University of Cambridge.