



1 Study the map extract for Stewarton, Scotland. The scale is 1:25 000.

(a) Fig. 1.1 shows some of the features around Dunlop.

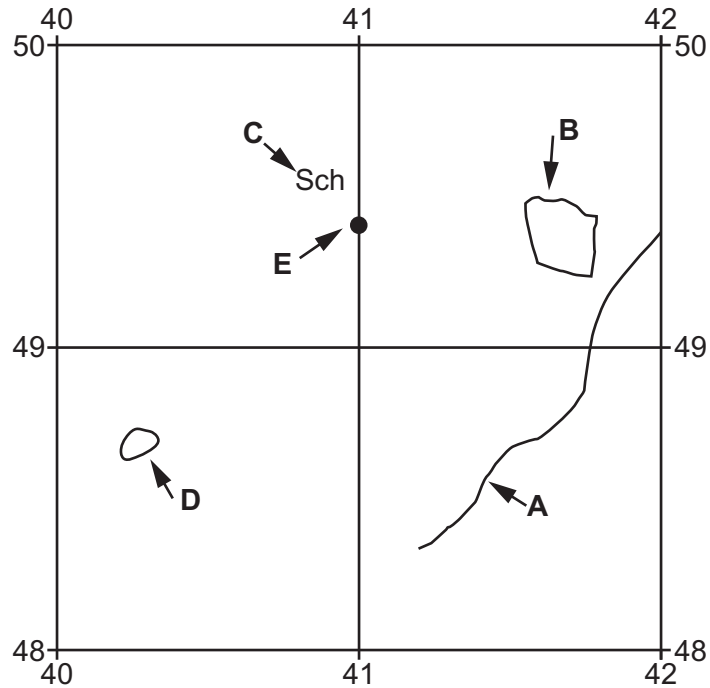


Fig. 1.1

Using the map extract, identify the following features shown in Fig. 1.1:

- (i) the type of road at **A**  
 ..... [1]
- (ii) the land use at **B**  
 ..... [1]
- (iii) feature **C**  
 ..... [1]
- (iv) the height above sea level of the contour line at **D**.  
 ..... metres [1]

(b) Study Fig. 1.1 and the map extract.

- (i) Using the map extract, measure the distance along the railway line from the railway station at Dunlop (E) to the railway station at Stewarton.

..... kms [1]

- (ii) What is the compass direction **from** the railway station at Dunlop (E) **to** the railway station at Stewarton?

..... [1]

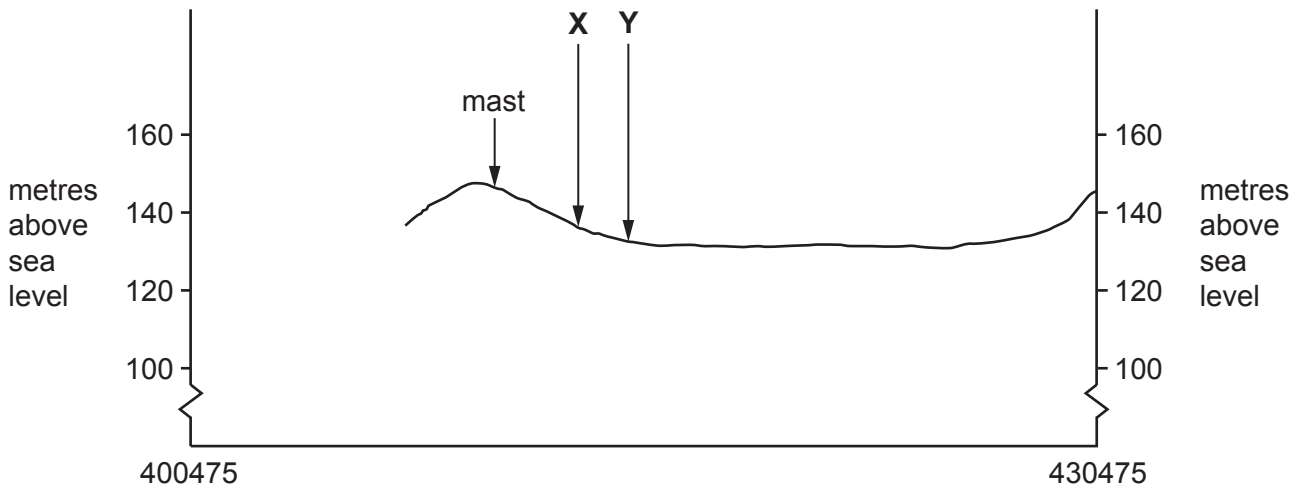
- (iii) What is the six-figure grid reference for the railway station at Stewarton?

..... [1]

(c) Identify **three** tourist facilities shown on the map extract.

- 1 .....
- 2 .....
- 3 ..... [3]

(d) Fig. 1.2 is a cross-section along northing 475 from 400475 to 430475.



**Fig. 1.2**

- (i) Identify the feature at X.

..... [1]

- (ii) Identify the feature at Y.

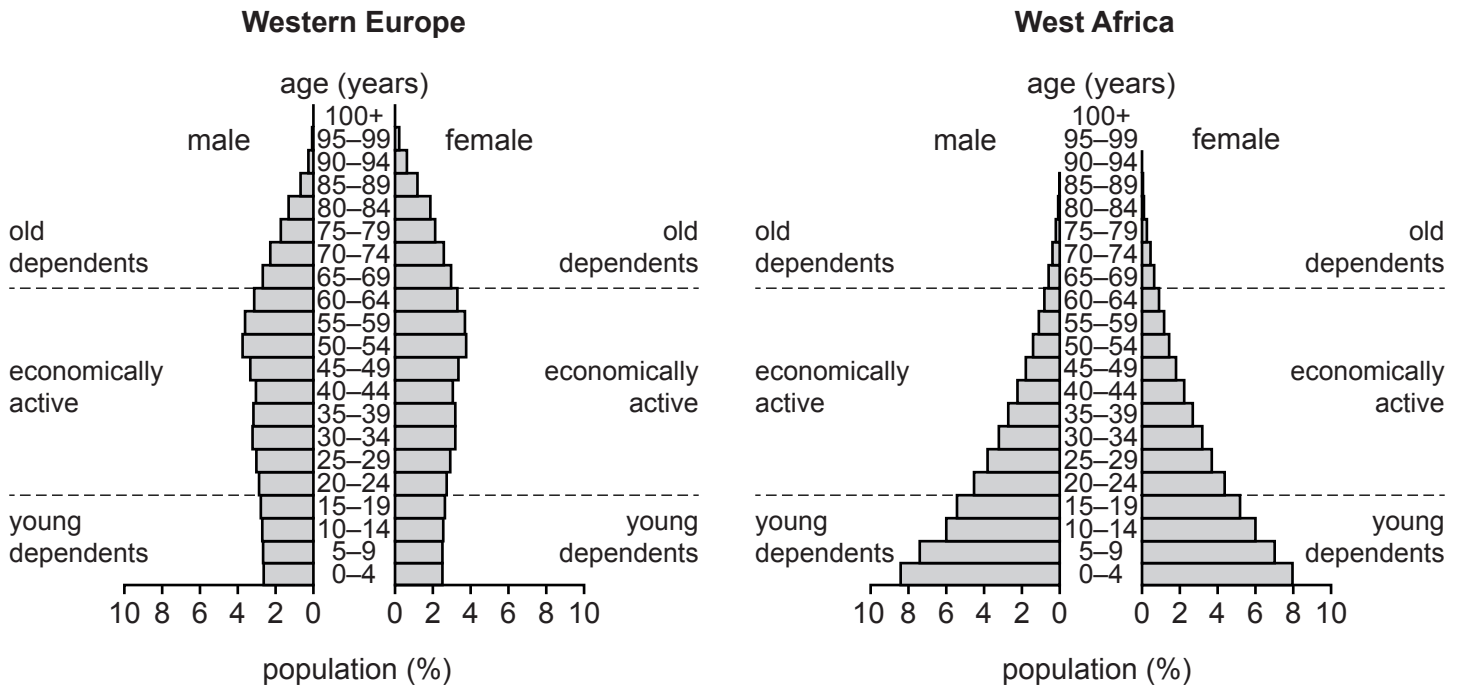
..... [1]

- (iii) The cross-section shown in Fig. 1.2 is incomplete. Using information from the map extract, draw a line on Fig. 1.2 to **complete the cross-section**.

[1]



2 Study Fig. 2.1, which shows information about the population of Western Europe and West Africa in 2019.



**Fig. 2.1**

(a) (i) What type of graph is shown in Fig. 2.1?

..... [1]

(ii) What was the percentage of males aged 20–24 in Western Europe?

.....% [1]

(iii) What was the total percentage of the population aged 10–14 in West Africa?

.....% [1]

(iv) Give **three** differences between the population structure of Western Europe and West Africa in 2019. Do **not** use statistics in your answer.

young dependents .....

.....

economically active .....

.....

old dependents .....

..... [3]

(b) Suggest **two** economic problems caused by a large population of young dependents.

.....

.....

.....

..... [2]

[Total: 8]

3 (a) (i) Fig. 3.1 (Insert) shows a new shopping centre. Using evidence from Fig. 3.1 **only**, suggest **four** advantages of shopping there.

- 1 .....
- .....
- 2 .....
- .....
- 3 .....
- .....
- 4 .....
- ..... [4]

(ii) Fig. 3.2 (Insert) shows a local neighbourhood clothing shop. State how this shop will differ from a clothing shop in Fig. 3.1 using the headings below.

- range of goods .....
- .....
- threshold population .....
- ..... [2]

(b) Suggest **two** advantages of people shopping in their local area.

- 1 .....
- .....
- 2 .....
- ..... [2]

[Total: 8]

4 Figs. 4.1, 4.2, 4.3 and 4.4 show weather instruments.

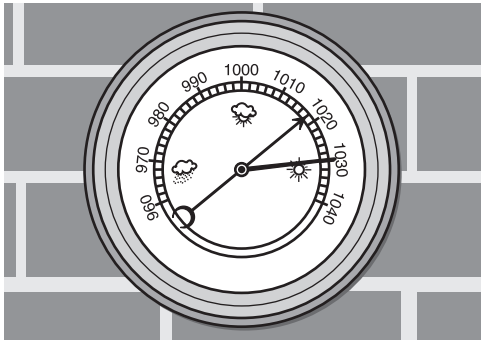


Fig. 4.1

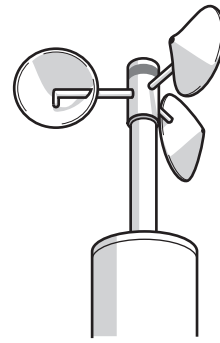


Fig. 4.2

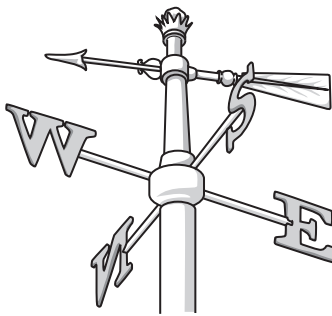


Fig. 4.3

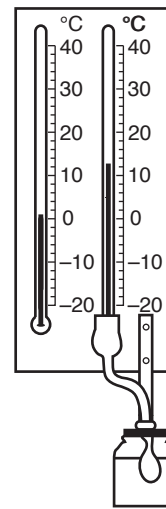


Fig. 4.4

(a) State what each weather instrument measures. Choose your answers from the following list.

- air pressure      humidity      rainfall      sunshine hours      wind direction      wind speed

Fig. 4.1 .....

Fig. 4.2 .....

Fig. 4.3 .....

Fig. 4.4 .....

[2]



(b) Study Fig. 4.5 (Insert), which shows a wind rose diagram.

Compare the wind from the south-south-west (SSW) and the north (N). Use statistics in your answer.

.....

.....

.....

.....

.....

.....

..... [3]

(c) Describe and explain where a Stevenson Screen should be sited.

.....

.....

.....

.....

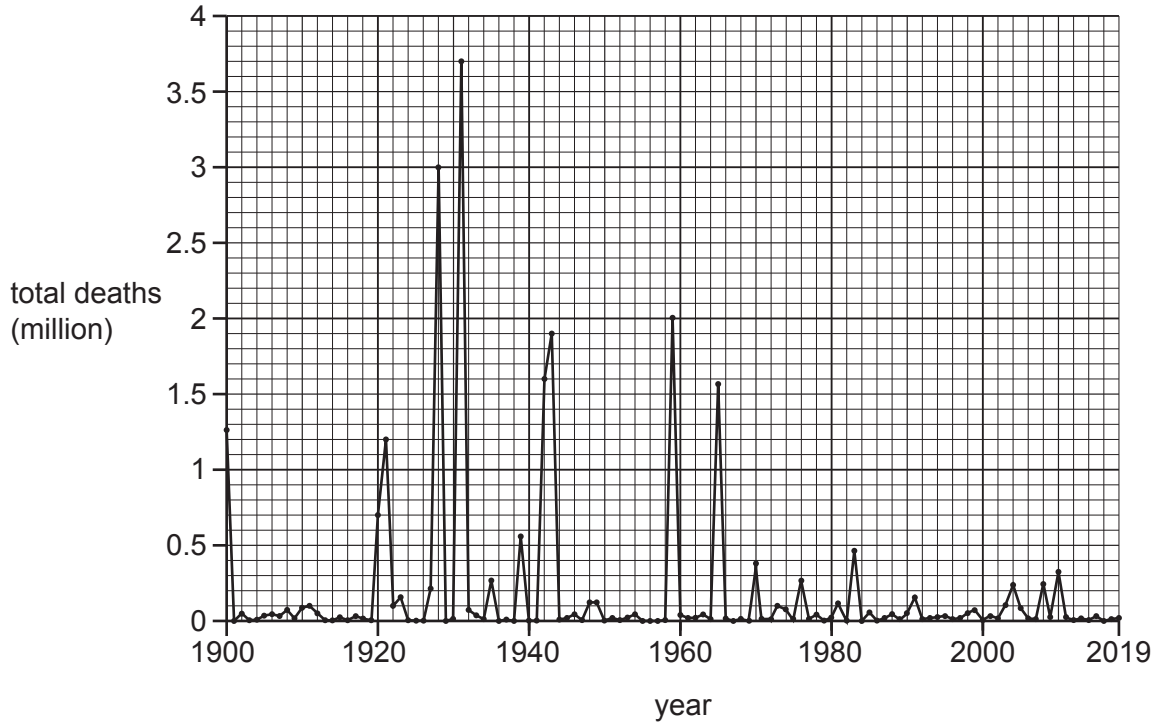
.....

.....

..... [3]

[Total: 8]

5 Fig. 5.1 shows information about the total number of global deaths from natural hazards between 1900 and 2019.



**Fig. 5.1**

(a) Using evidence from Fig. 5.1 **only**, describe the pattern of global deaths from natural hazards between 1900 and 2019. Do **not** use statistics in your answer.

.....

.....

.....

.....

.....

.....

.....

.....

..... [4]

(b) Fig. 5.2 (Insert), shows the global distribution of deaths from natural hazards in 2017.

Using Fig. 5.2, describe the global distribution of deaths from natural hazards. You may use statistics in your answer.

.....

.....

.....

.....

.....

.....

.....

.....

..... [4]

[Total: 8]

- 6 The Dominican Republic is a popular tourist destination. Fig. 6.1 shows the top 10 countries with the most visitors to the Dominican Republic.

	origin of visitors	number of visitors
1	United States	2 073 963
2	Canada	827 721
3	Germany	265 709
4	Russia	245 346
5	France	221 492
6	Argentina	182 170
7	Spain	177 993
8	United Kingdom	177 534
9	Puerto Rico	111 095
10	Venezuela	109 734

**Fig. 6.1**

- (a) What type of graph would be most suitable to show the information in Fig. 6.1?

..... [1]

Fig. 6.2 shows the location of the Dominican Republic and the countries named in Fig. 6.1.

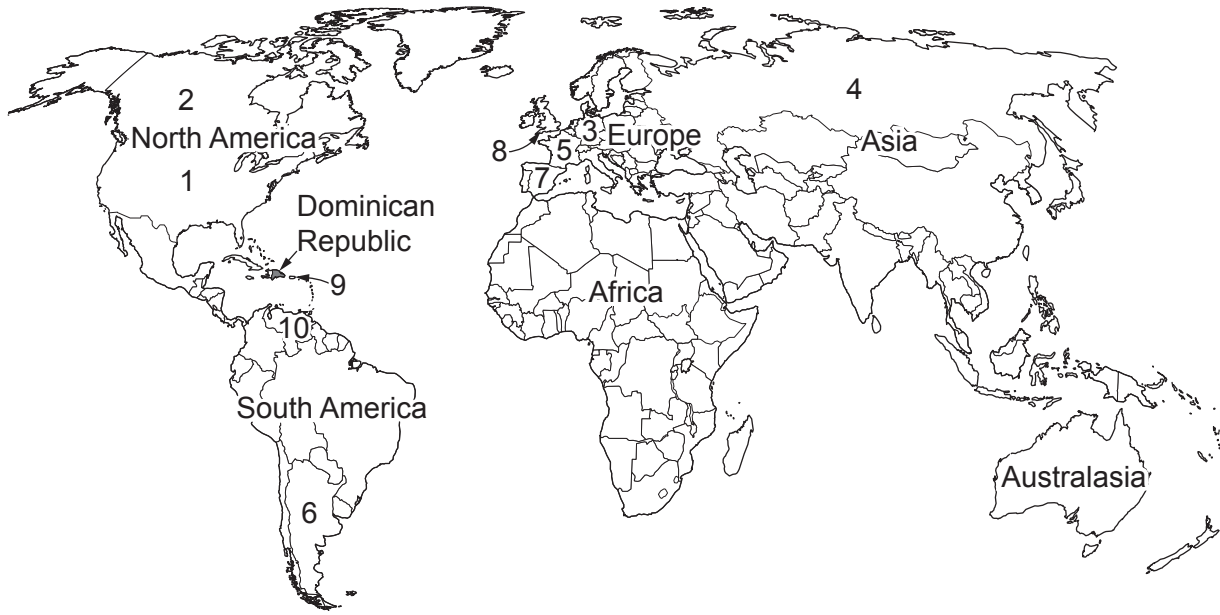


Fig. 6.2

(b) Using Fig. 6.1 and Fig. 6.2, identify:

- (i) the continent that has the most countries in the top 10 of visitors to the Dominican Republic

..... [1]

- (ii) **two** continents that have no countries in the top 10 of visitors to the Dominican Republic.

1 .....

2 ..... [2]

(c) Suggest the advantages and disadvantages of increasing numbers of tourists for the people and economy of the Dominican Republic.

advantages .....

.....

.....

.....

disadvantages .....

.....

.....

..... [4]

[Total: 8]



