



# Cambridge IGCSE™

CANDIDATE NAME

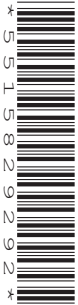


CENTRE NUMBER

--	--	--	--	--

CANDIDATE NUMBER

--	--	--	--



## GEOGRAPHY

0460/23

Paper 2 Geographical Skills

October/November 2024

1 hour 30 minutes

You must answer on the question paper.

You will need:

Insert (enclosed)	Plain paper
1:25 000 survey map (enclosed)	Protractor
Calculator	Ruler

### INSTRUCTIONS

- Answer **all** questions.
- Use a black or dark blue pen. You may use an HB pencil for any diagrams or graphs.
- Write your name, centre number and candidate number in the boxes at the top of the page.
- Write your answer to each question in the space provided.
- Do **not** use an erasable pen or correction fluid.
- Do **not** write on any bar codes.
- If additional space is needed, you should use the lined pages at the end of this booklet; the question number or numbers must be clearly shown.

### INFORMATION

- The total mark for this paper is 60.
- The number of marks for each question or part question is shown in brackets [ ].
- The insert contains additional resources referred to in the questions.

LEDCs – Less Economically Developed Countries  
 MEDCs – More Economically Developed Countries

This document has **20** pages. Any blank pages are indicated.





1 Study the map extract for Sabbio Chiese, Italy. The scale is 1:25 000.

(a) Study Fig. 1.1, which shows some of the features in the north of the map extract.

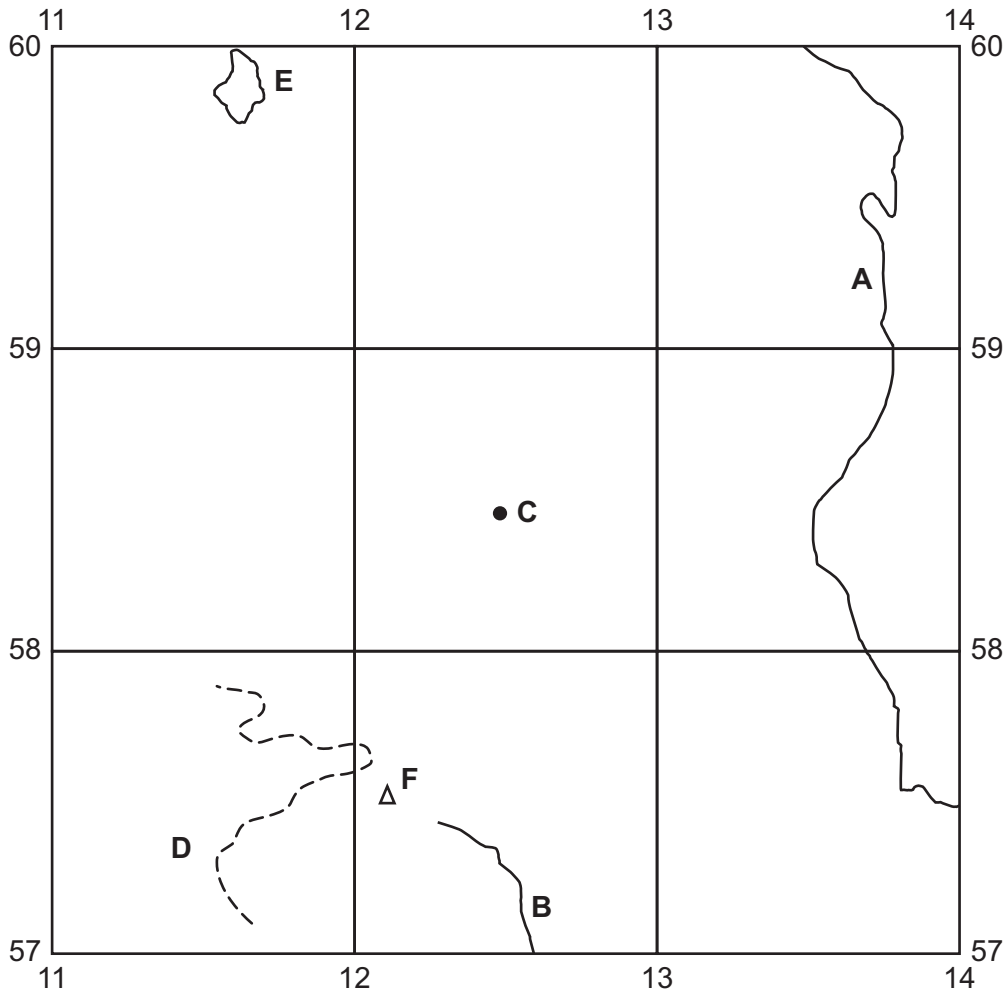


Fig. 1.1

Using the map extract, identify the following features shown in Fig. 1.1:

- (i) the type of road at **A**  
 ..... [1]
- (ii) the name of the river at **B**  
 ..... [1]
- (iii) the height above sea level of the spot height at **C**  
 ..... metres [1]
- (iv) feature **D**  
 ..... [1]
- (v) the name of the settlement at **E**.  
 ..... [1]





(b) Give the six-figure grid reference of the trigonometric point, **F**, shown in Fig. 1.1.

.....

[1]

(c) Find the settlement of Pavone in grid square 1156.

(i) What is the settlement pattern of Pavone? Tick (✓) **one** box below.

	tick (✓)
linear	
nucleated	
dispersed	

[1]

(ii) Give a reason for this settlement pattern.

.....

..... [1]

(d) Find the yellow provincial road 237 in the north-west of the map extract.

(i) What is the distance in metres along the **yellow provincial road 237** between the roundabout (circle) in grid square 0958 and the northern edge of the map extract?

Tick (✓) **one** box below.

	tick (✓)
1000 m	
1400 m	
1800 m	
2200 m	

[1]

(ii) What is the compass direction **from** the roundabout (circle) in grid square 0958 **to** the parking in Sabbio Chiese?

.....

[1]

DO NOT WRITE IN THIS MARGIN

DO NOT WRITE IN THIS MARGIN

DO NOT WRITE IN THIS MARGIN

DO NOT WRITE IN THIS MARGIN

DO NOT WRITE IN THIS MARGIN





(e) Fig. 1.2 is a cross-section along northing 58 from 090580 to 110580.

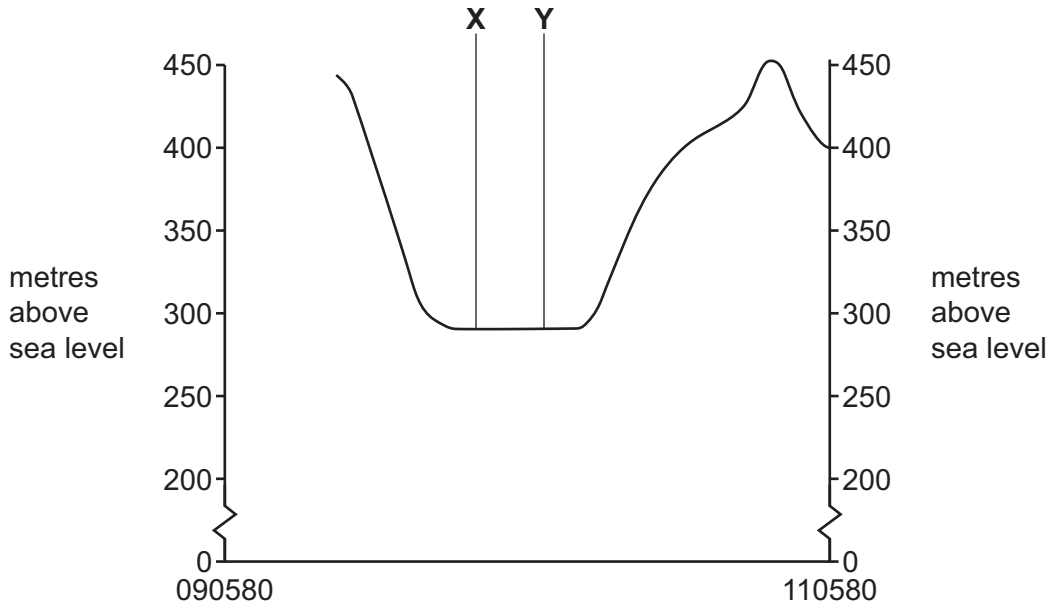


Fig. 1.2

(i) Identify the feature at X.

.....

[1]

(ii) Identify the feature at Y.

.....

[1]

(iii) The cross-section shown in Fig. 1.2 is incomplete. Using information from the map extract, draw a line on Fig. 1.2 to **complete the cross-section**. [2]

DO NOT WRITE IN THIS MARGIN

DO NOT WRITE IN THIS MARGIN

DO NOT WRITE IN THIS MARGIN

DO NOT WRITE IN THIS MARGIN

DO NOT WRITE IN THIS MARGIN





(f) Study the river flowing between Barghe and Sabbio Chiese. Describe the physical (natural) features of the river and its valley. Do **not** refer to land use beside the river.

river

.....  
.....  
.....  
.....  
.....  
.....  
.....  
.....

valley

.....  
.....  
.....  
.....  
.....  
.....  
.....  
.....

[6]

[Total: 20]

DO NOT WRITE IN THIS MARGIN





2 Study Fig. 2.1, which shows population change for Asia, Europe and the world between 1950 and 2020.

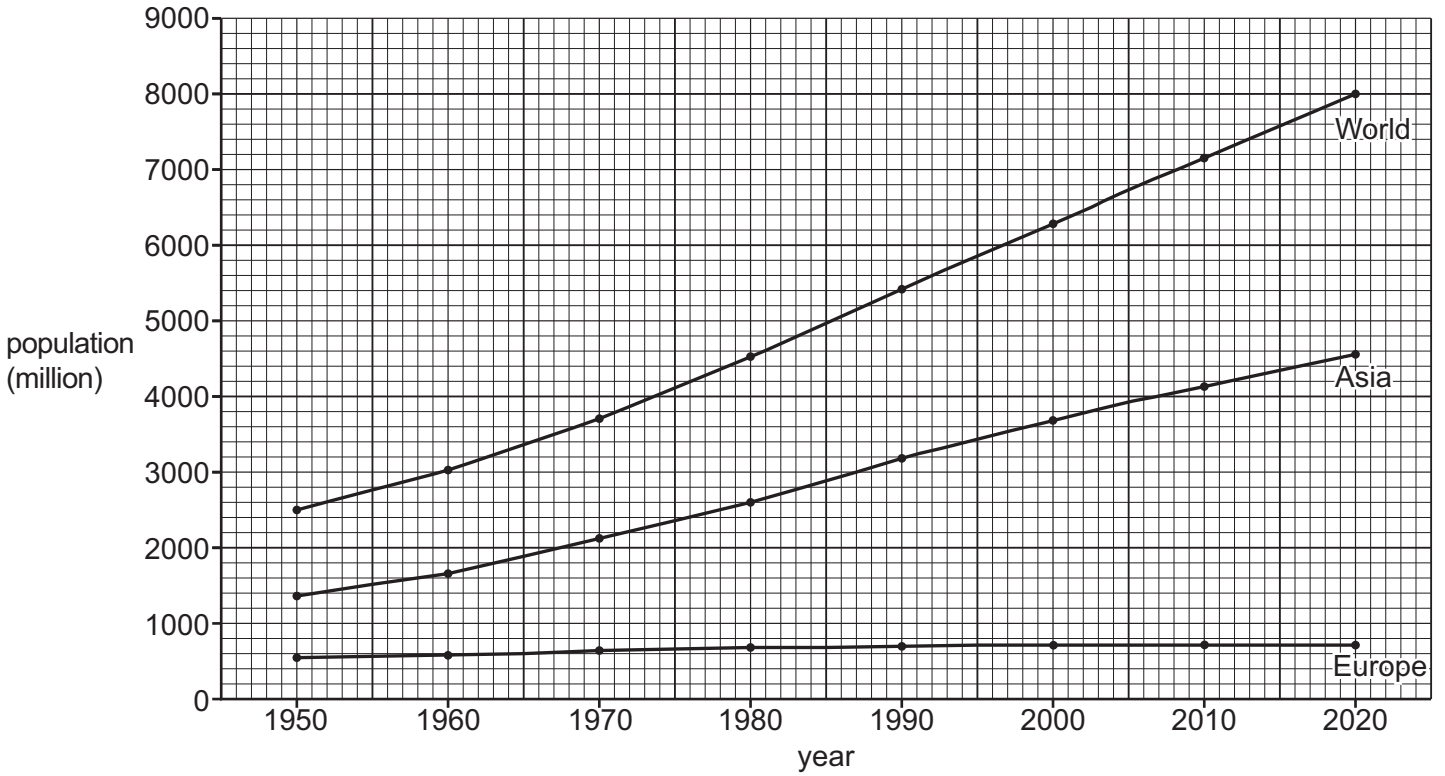


Fig. 2.1

(a) (i) What was the world population in 2020?

..... million [1]

(ii) Compare population change in Asia and Europe between 1950 and 2020. Use statistics in your answer.

.....  
.....  
.....  
..... [2]

DO NOT WRITE IN THIS MARGIN





(b) Table 2.1 shows population data for the United Kingdom in 2018.

Table 2.1

birth rate (per 1000 people)	death rate (per 1000 people)	net migration (per 1000 people)
11.3	9.3	+ 3.9

Population change can be calculated as **natural** population change or **overall** population change.

(i) Using Table 2.1, calculate the **natural** population change for the United Kingdom.

..... per thousand [1]

(ii) Using Table 2.1, calculate the **overall** population change for the United Kingdom.

..... per thousand [1]

(c) Some countries have a falling birth rate. Suggest **three** reasons why a country's birth rate might fall.

1 .....

.....

2 .....

.....

3 .....

.....

[3]

[Total: 8]



DO NOT WRITE IN THIS MARGIN







(c) Low-order services are found in rural settlements.

(i) Which of the following is a low-order service. Tick (✓) **one** box below.

	tick (✓)
hospital	
shoe shop	
primary school	

[1]

(ii) Explain why low-order services  
have a small sphere of influence

.....

.....

have a low threshold population.

.....

.....

[2]

[Total: 8]

DO NOT WRITE IN THIS MARGIN





4 Fig. 4.1 shows the average cliff erosion rate at selected sites in Withernsea, UK. Fig. 4.2 shows the location of the sites.

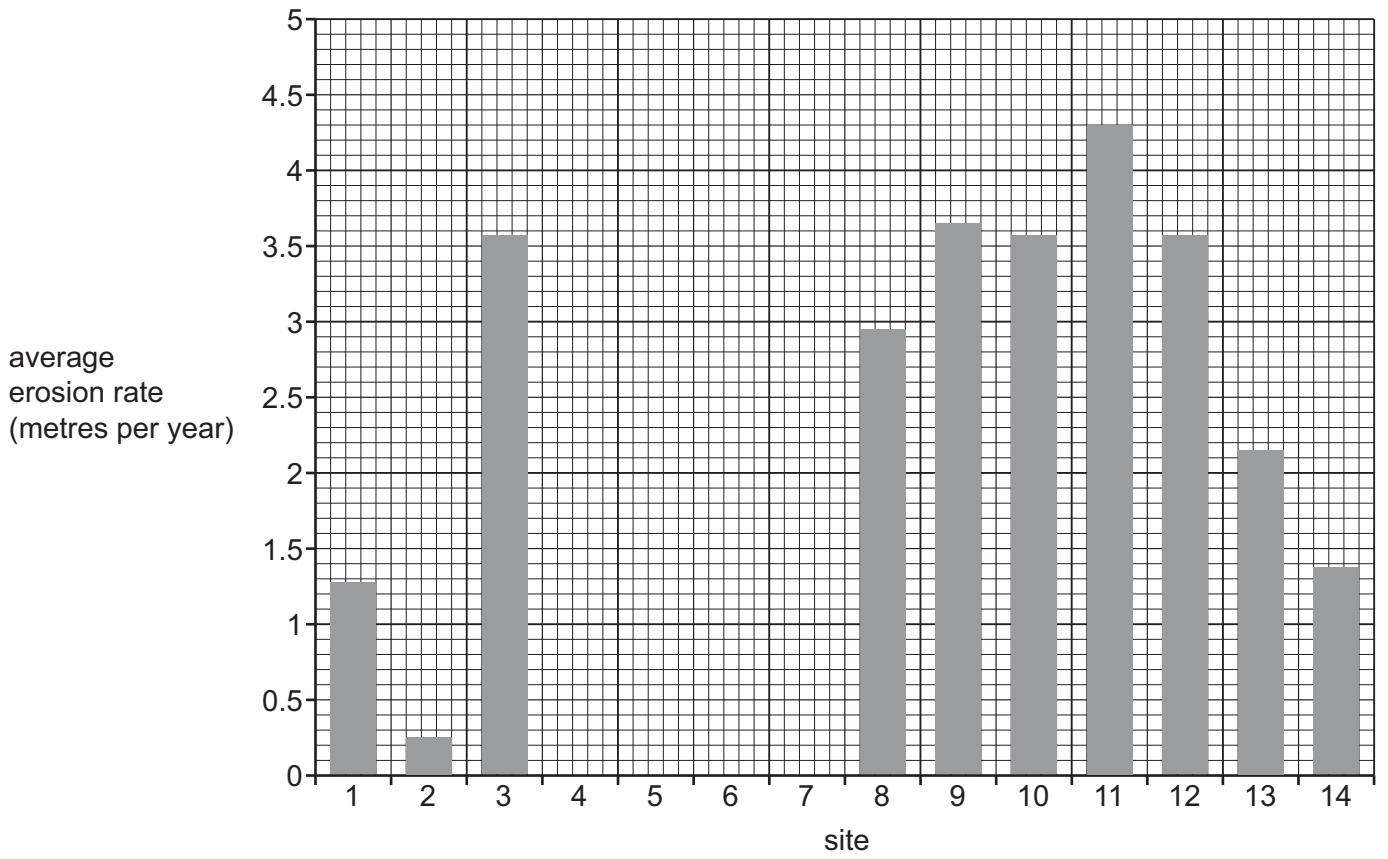


Fig. 4.1

DO NOT WRITE IN THIS MARGIN



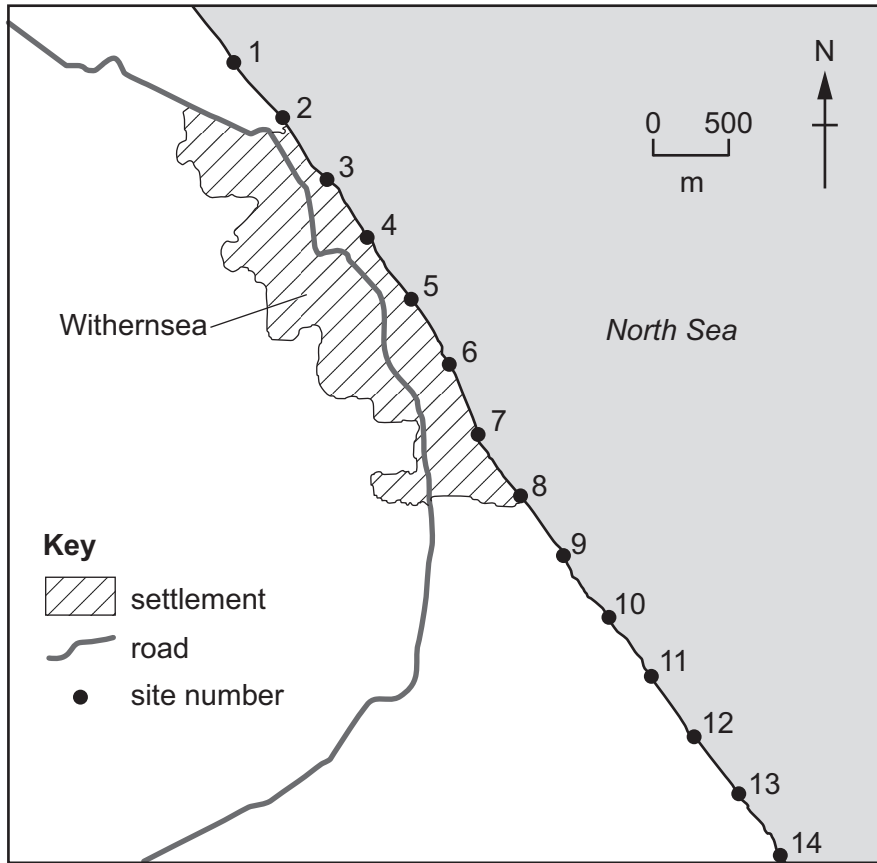


Fig. 4.2

(a) (i) Using Fig. 4.1, state the average erosion rate at site 11.

..... metres per year [1]

(ii) Using Fig. 4.2, suggest a reason why coastal protection methods were located between sites 4 and 7.

.....  
..... [1]



DO NOT WRITE IN THIS MARGIN



(b) Study Fig. 4.3 (Insert), which shows the coastal protection methods used at Withernsea, UK, between sites 4 and 7.

(i) Choose **one** of the coastal protection methods shown in Fig. 4.3, and explain how it protects the coast.

coastal protection method .....

.....  
.....  
.....  
..... [2]

(ii) Describe the advantages and disadvantages of the coastal protection method chosen.

advantages

.....  
.....  
.....  
.....

disadvantages

.....  
.....  
.....  
.....

[4]

[Total: 8]

DO NOT WRITE IN THIS MARGIN

DO NOT WRITE IN THIS MARGIN

DO NOT WRITE IN THIS MARGIN

DO NOT WRITE IN THIS MARGIN

DO NOT WRITE IN THIS MARGIN



\* 00080000013 \*



13



BLANK PAGE

DO NOT WRITE IN THIS MARGIN





5 Study Fig. 5.1, which shows the processes of the hydrological cycle.

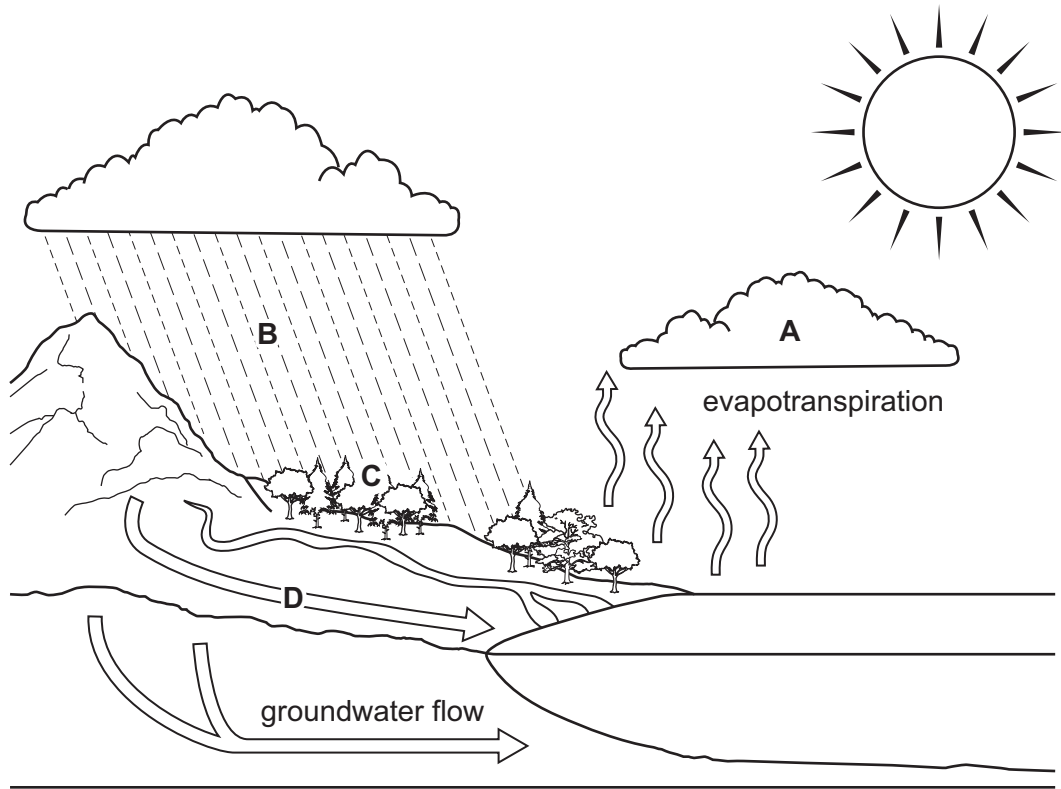


Fig. 5.1

(a) Name the processes A–D shown in Fig. 5.1.

- A .....
- B .....
- C .....
- D .....

[4]





(b) The processes of evapotranspiration and groundwater flow are labelled in Fig. 5.1. Describe each of these processes.

evapotranspiration

.....  
.....  
.....  
.....

groundwater flow

.....  
.....  
.....  
.....

[4]

[Total: 8]

DO NOT WRITE IN THIS MARGIN





BLANK PAGE

DO NOT WRITE IN THIS MARGIN

DO NOT WRITE IN THIS MARGIN

DO NOT WRITE IN THIS MARGIN

DO NOT WRITE IN THIS MARGIN

DO NOT WRITE IN THIS MARGIN







6 Study Fig. 6.1, which shows the agricultural system for an arable farm.

(a) Complete Fig. 6.1 using the following information.

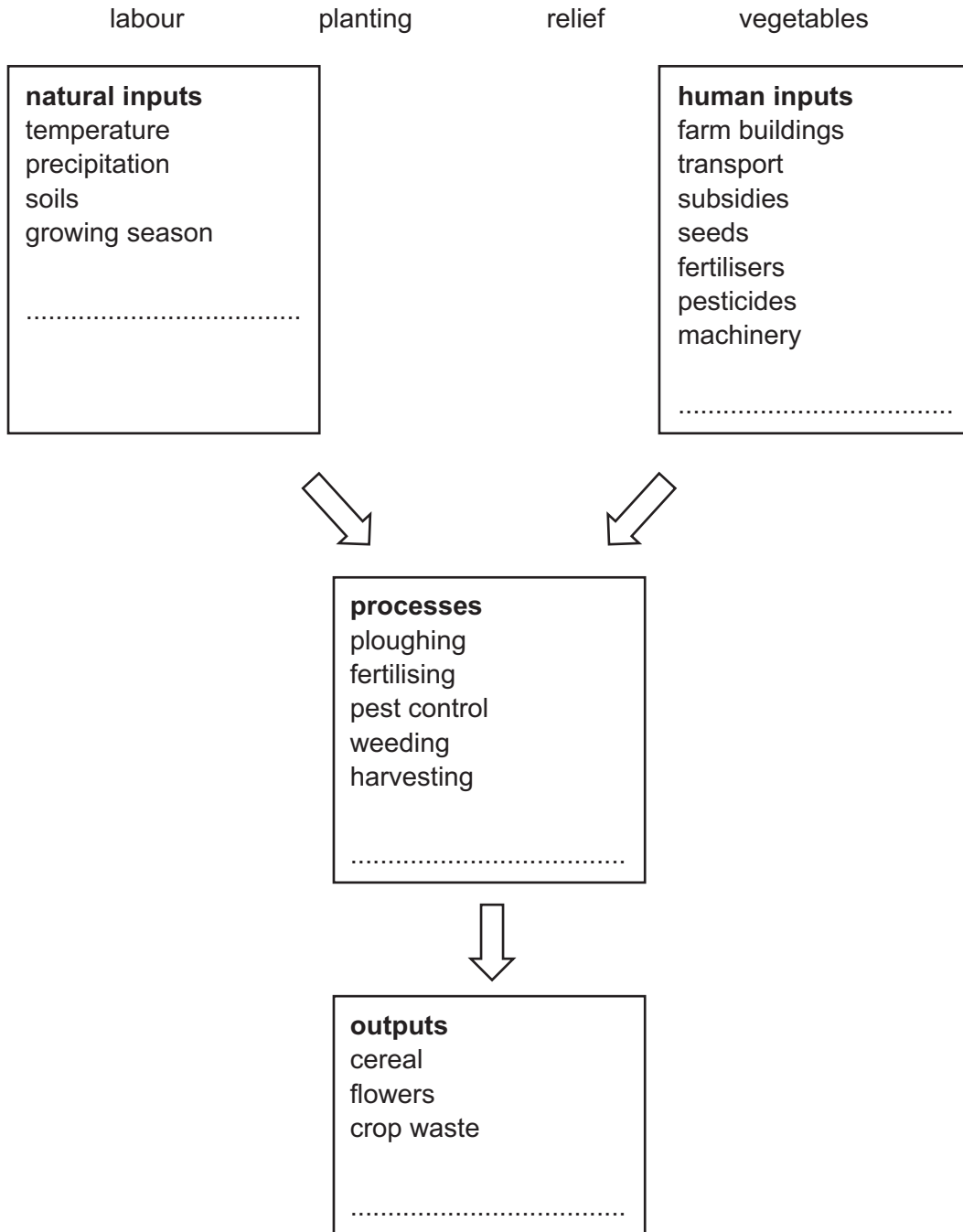


Fig. 6.1

[2]



DO NOT WRITE IN THIS MARGIN



(b) Fig. 6.2 shows the main impacts of climate change in Europe.

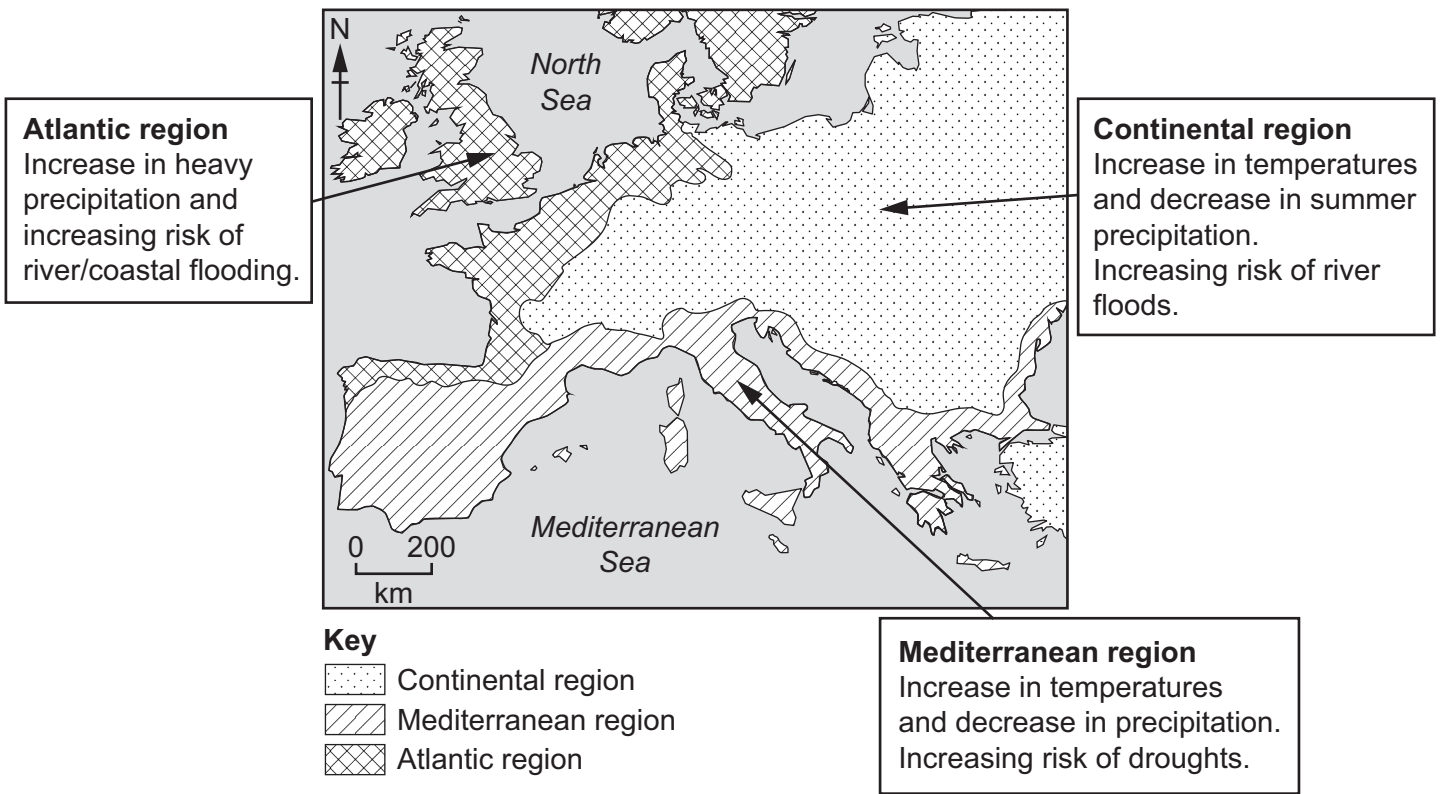


Fig. 6.2

Fig. 6.3 shows facts about agriculture in Europe.

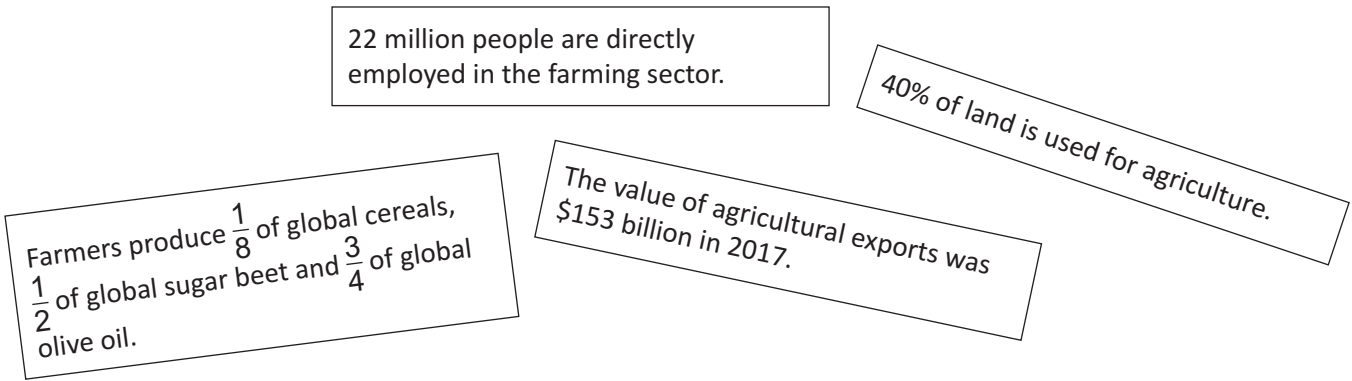


Fig. 6.3

DO NOT WRITE IN THIS MARGIN





Using Fig. 6.2 and Fig. 6.3, suggest **three** possible impacts of climate change on agriculture in Europe.

1 .....

.....

.....

.....

2 .....

.....

.....

3 .....

.....

.....

.....

[6]

[Total: 8]

DO NOT WRITE IN THIS MARGIN





Additional page

If you use the following page to complete the answer to any question, the question number must be clearly shown.

Area with horizontal dotted lines for writing answers.

The boundaries and names shown, the designations used and the presentation of material on any maps contained in this question paper/insert do not imply official endorsement or acceptance by Cambridge Assessment International Education concerning the legal status of any country, territory, or area or any of its authorities, or of the delimitation of its frontiers or boundaries.

Permission to reproduce items where third-party owned material protected by copyright is included has been sought and cleared where possible. Every reasonable effort has been made by the publisher (UCLES) to trace copyright holders, but if any items requiring clearance have unwittingly been included, the publisher will be pleased to make amends at the earliest possible opportunity.

To avoid the issue of disclosure of answer-related information to candidates, all copyright acknowledgements are reproduced online in the Cambridge Assessment International Education Copyright Acknowledgements Booklet. This is produced for each series of examinations and is freely available to download at www.cambridgeinternational.org after the live examination series.

Cambridge Assessment International Education is part of Cambridge Assessment. Cambridge Assessment is the brand name of the University of Cambridge Local Examinations Syndicate (UCLES), which is a department of the University of Cambridge.



DO NOT WRITE IN THIS MARGIN