

**MARK SCHEME for the May/June 2010 question paper
for the guidance of teachers**

**0417 INFORMATION AND COMMUNICATION
TECHNOLOGY**

0417/03 Paper 3 (Practical Test B), maximum raw mark 80

This mark scheme is published as an aid to teachers and candidates, to indicate the requirements of the examination. It shows the basis on which Examiners were instructed to award marks. It does not indicate the details of the discussions that took place at an Examiners' meeting before marking began, which would have considered the acceptability of alternative answers.

Mark schemes must be read in conjunction with the question papers and the report on the examination.

- CIE will not enter into discussions or correspondence in connection with these mark schemes.

CIE is publishing the mark schemes for the May/June 2010 question papers for most IGCSE, GCE Advanced Level and Advanced Subsidiary Level syllabuses and some Ordinary Level syllabuses.

Candidate name, Centre number, candidate number

```
<HTML>
<HEAD>
  <TITLE>Relaxing Holiday Company - June 2010</TITLE>
  <link rel="stylesheet" type="text/css" href="JXstyles1.css">
</HEAD>
<BODY>
```

Correct stylesheet attached 1 mark
Must be relative referencing

```
<a name="START"></a>
```

Anchor START 1 mark
Can be in first cell of table
Upper case
Not visible on page

```
<TABLE width="100%" id="top">
  <TR align="center" valign="center">
    <TD colspan="4"></TD>
  </TR>
  <TR>
    <TD colspan="4">
```

Table Width 100% 1 mark

```
  <h3>Last edited by Candidate name, centre number, candidate number
</TD>
</TR>
<TR>
  <TD>
```

```
  <h2>Sun
</TD>
<TD>
  <h2>Sea
</TD>
<TD>
  <h2>Sand
</TD>
<TD>
```

Hyperlink Snow 1 mark
To anchor SNOWZONE 1 mark
Upper case and wrong checklist

```
  <h2><a href="#SNOWZONE">Snow</a>
</TD>
</TR>
</TABLE>
```

Table Width 90% 1 mark

```
<TABLE width="90%" align="center" id="middle">
  <TR>
    <TD rowspan="3"></TD>
    <TD><h3>We offer holidays to suit your every need. We can often make dreams come true.</TD>
  </TR>
  <TR>
    <TD><h3>Let us arrange your holiday for you. We will collect you from your home and offer the best service of any holiday company in the world.</TD>
  </TR>
  <TR>
    <TD><h3>Combine our service with superb value for money. Contact us with your requirements and we are sure that we will not disappoint you.</TD>
  </TR>
</TABLE>
```

Table Width 100% 1 mark

```
<TABLE width="100%" id="bottom">
  <TR>
    <TD>
      <h2>
    </TD>
    <TD>
      <h2><a href="JXSEA.HTM" target="_sea">
    </TD>
  </TR>
</TABLE>
```

Target _sea 1 mark
Case as shown to JXSEA.HTM 1 mark
Ignore case
Accept base target placed in head of page

| | | |
|--------|--------------------------------|----------|
| Page 3 | Mark Scheme: Teachers' version | Syllabus |
| | IGCSE – May/June 2010 | 0417 |

```

<h2><a href="mailto:RHC@cie.org.uk"><img src = "JXImg6.jpg"></a>
</TD>
</TR>
<TR align="center" valign="center">
<TD colspan = "4"> <img src = "JXFOOTER.jpg"></TD>
</TR>
<TR>

```

Target Phone image as link 1 mark
 JXImg6 only
 Penalise for absolute image reference
 Correct mailto: 1 mark
 Ignore case

```

<a name="SNOWZONE"></a>
<TD colspan = "4">
<h1> Try RHC Snowzone</h1>
<h3> Why not relax with a chilling winter holiday on the
both short haul and long haul and can offer some of the be
chalets for the ultimate luxury. Leave the slopes and return
prepared for you by one of the world finest chefs. You will not find these holidays in any brochure, each holiday
is unique to your requirements. Contact us using the link above for further details.</h3>
</TD>
</TR>
<TR>
<TD colspan = "4">

```

Anchor SNOWZONE 1 mark
 Case as shown
 No extra text

```

<h2><a href="#START">Click Here</a> to return to the top of the page.</h2>
</TD>
</TR>
</TABLE>
</BODY>
</HTML>

```

Hyperlink Click Here 1 mark
 Click Here only
 Rest of text intact
 Returns to start 1 mark
 Allow follow through on name

Top left Last edited by & name & No's 1 mark
Any order for name and numbers

Top table From JXTOP.htm
Table must be fully visible

Middle table 3 rows and 2 columns 1 mark
Merged cells in column 1 1 mark
Table centre aligned in window 1 mark
Award only if tables fully visible
Correct text each cell 1 mark
Can check in markup if needed
Style h3 1 mark
JXHARBOUR.JPG left cell 1 mark
NEW SCREENSHOT

Relaxing Holiday Company - June 2010

The Relaxing Holiday Company

Last edited by Candidate name, Centre number, candidate number

| | | | |
|-----|-----|------|--|
| Sun | Sea | Sand | |
|-----|-----|------|--|



We offer holidays to suit your every need. We can often make dreams come true.

Let us arrange your holiday for you. We will collect you from your home and offer the best service of any holiday company in the world.

Combine our service with superb value for money. Contact us with your requirements and we are sure that we will not disappoint you.






Chill, let RHC take care of you!

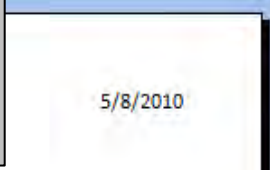
Try RHC Snowzone

Why not relax with a chilling winter holiday on the slopes. We can cater for a range of destinations, both short haul and long haul and can offer some of the best 'off piste' skiing and boarding. Try out catered chalets for the ultimate luxury. Leave the slopes and return to the chalet to find a superb a la carte dinner prepared for you by one of the world finest chefs. You will not find these holidays in any brochure, each holiday is unique to your requirements. Contact us using the link above for further details.

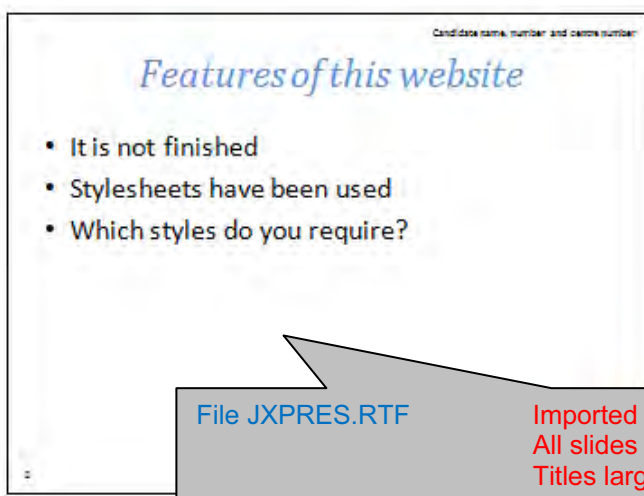
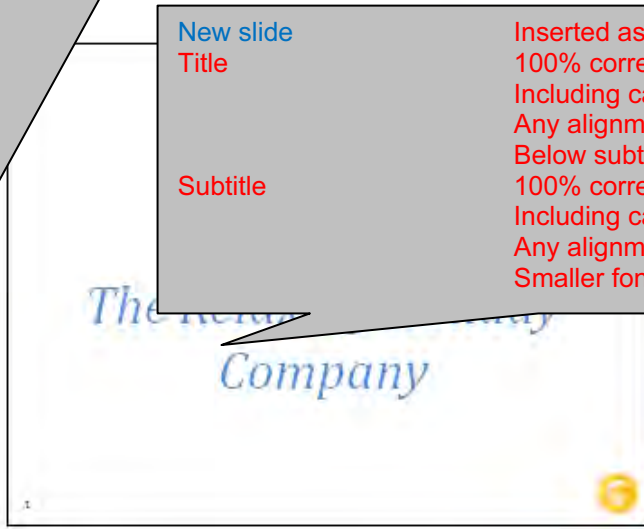
[to return to the top of the page.](#)

- Bottom table From JXBOTTOM.htm 1 mark
- Table must be fully visible
- Sun image left 1 mark
- Sea image 2nd 1 mark
- Sand image 3rd 1 mark
- Phone image right 1 mark
- Sun resized to 160 & aspect 1 mark
- Sand resized to 160 & aspect 1 mark

| | | |
|----------------------------------|---------------------------------------------------------------------------------|--------|
| Master slide – CHECK CONSISTENCY | | |
| Background | White, slide numbers bottom left Left 1/3 of slide | 1 mark |
| Name, cand no, Centre no | Top right black, 12pt, serif Right 1/2 of slide | 1 mark |
| Image | Sun – bottom right Must not be source files – flexible Right 1/3 of slide | 1 mark |
| Master slide items | Not overlapping any object Not touching and all present | 1 mark |



| | | |
|-----------|--------------------------------------------------------------------------------------------------------------------|------------------|
| New slide | Inserted as first slide | 1 mark |
| Title | 100% correct Including case, can be on single line Any alignment/No bullet points Below subtitle | 1 mark 1 mark |
| Subtitle | 100% correct Including case, can be on single line Any alignment/No bullet points Smaller font than title | 1 mark 1 mark |



| | | |
|-----------------|-----------------------------------------------------------------------------------------------------------------------------------------------------------------------------------------|----------------------------|
| File JXPRES.RTF | Imported All slides present and intact Titles larger than bullets and consistent style (fonts/bullets) Bulleted lists consistent style Size may vary from slide to slide | 1 mark 1 mark 1 mark |
|-----------------|-----------------------------------------------------------------------------------------------------------------------------------------------------------------------------------------|----------------------------|


5/8/2010

Candidate name, number and centre number

Background

- Background colour can be added to stylesheets
- Background images can be added to stylesheets

1




Candidate name, number and centre number

Stylesheet JXstyle1.css

- The background image in JXstyle1.css does not work because:
 - File not present in current directory or filename incorrect
- The html code to make the background colour show is:
 - `body {background-color: #025fb4 }`
- The text for h1 and h2 is not white and h3 is not yellow because:
 - No green element in hexadecimal colour code

4



2

| | | |
|----------|--------------------------------------------------------------------------------------------------------------------------------|----------------------------|
| Slide 4 | | |
| Answer 1 | File not present/misnamed Not in current directory/folder Text 'answer n here' has been replaced Must be all | 1 mark 1 mark 1 mark |
| Answer 2 | Body { Background-color: #025fb4 e.g. <code>body {background-image: url(j9sunset.jpg); background-color: #025fb4}</code> | 1 mark 1 mark |
| Answer 3 | No green element Accept hex with FF for middle 2 digits In hexadecimal/colour code/definition | 1 mark 1 mark |

5/8/2010

Confidential name, number and centre number

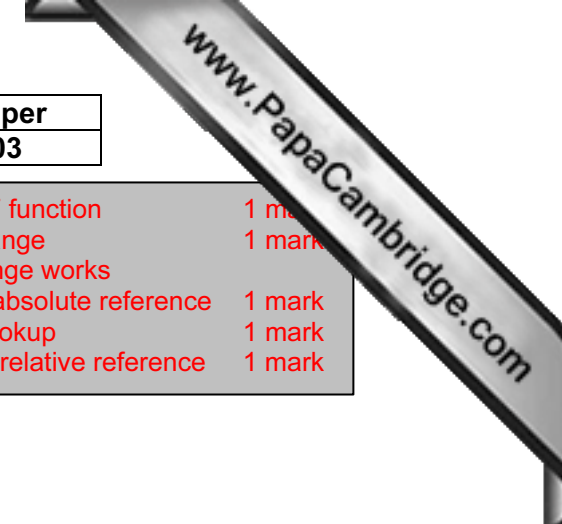
Spacing

- The cell spacing has changed between JXstyle1.css and JXstyle2.css
- Cell padding is:
 - Space between the text and the cell wall inside a cell of a table
- Cell spacing is:
 - Space between the walls of 2 adjacent cells

Slide 5

| | | |
|----------|-----------------------------------------|--------|
| Answer 4 | Space between text and cell wall | 1 mark |
| | Inside/in table/cell | 1 mark |
| Answer 5 | Interchange cell wall and border | 1 mark |
| | Space between Walls of 2 adjacent cells | 1 mark |
| | Interchange cell wall and border | |

| | | |
|---------|-------------------|--------|
| Printed | 2 slides per page | 1 mark |
|---------|-------------------|--------|



Destination Lookup used 1 mark
 Lookup or Vlookup
 Correct lookup reference 1 mark
 Do not allow range
 Lookup – relative reference 1 mark
 Correct range 1 mark
 Including filename
 Range – absolute reference 1 mark
 Check range works
 Correct return column 1 mark
 Award if visible and Lookup used
 Check first row

Trips COUNTIF function 1 mark
 Correct range 1 mark
 Check range works
 Range – absolute reference 1 mark
 Correct lookup 1 mark
 Lookup – relative reference 1 mark

=VLOOKUP(JXDEST.csv!\$A\$2:\$B\$11,2,0) EGY
 =VLOOKUP(JXDEST.csv!\$A\$2:\$B\$11,2,0) IND
 =VLOOKUP(B6,JXDEST.csv!\$A\$2:\$B\$11,2,0) MAL
 =VLOOKUP(B7,JXDEST.csv!\$A\$2:\$B\$11,2,0) SRI
 =VLOOKUP(B8,JXDEST.csv!\$A\$2:\$B\$11,2,0) THA

Trips
 =COUNTIF(\$D\$25:\$D\$98,B2)
 =COUNTIF(\$D\$25:\$D\$98,B3)
 =COUNTIF(\$D\$25:\$D\$98,B4)
 =COUNTIF(\$D\$25:\$D\$98,B5)
 =COUNTIF(\$D\$25:\$D\$98,B6)
 =COUNTIF(\$D\$25:\$D\$98,B7)
 =COUNTIF(\$D\$25:\$D\$98,B8)

Days Correct SUMIF function 1 mark
 Correct range 1 mark
 Check range works
 Range – absolute reference 1 mark
 Lookup – relative reference 1 mark
 Correct range 1 mark
 Check range works
 Range – absolute reference 1 mark
 Other functions like SUMIFS may be used

| Month | Mcode | Days |
|-----------|-------|---------------------------------------------|
| January | 1 | =SUMIF(\$B\$25:\$B\$98,B11,\$F\$25:\$F\$98) |
| February | 2 | =SUMIF(\$B\$25:\$B\$98,B12,\$F\$25:\$F\$98) |
| March | 3 | =SUMIF(\$B\$25:\$B\$98,B13,\$F\$25:\$F\$98) |
| April | 4 | =SUMIF(\$B\$25:\$B\$98,B14,\$F\$25:\$F\$98) |
| May | 5 | =SUMIF(\$B\$25:\$B\$98,B15,\$F\$25:\$F\$98) |
| June | 6 | =SUMIF(\$B\$25:\$B\$98,B16,\$F\$25:\$F\$98) |
| July | 7 | =SUMIF(\$B\$25:\$B\$98,B17,\$F\$25:\$F\$98) |
| August | 8 | =SUMIF(\$B\$25:\$B\$98,B18,\$F\$25:\$F\$98) |
| September | 9 | =SUMIF(\$B\$25:\$B\$98,B19,\$F\$25:\$F\$98) |
| October | 10 | =SUMIF(\$B\$25:\$B\$98,B20,\$F\$25:\$F\$98) |
| November | 11 | =SUMIF(\$B\$25:\$B\$98,B21,\$F\$25:\$F\$98) |
| December | 12 | =SUMIF(\$B\$25:\$B\$98,B22,\$F\$25:\$F\$98) |

Replication All 3 formulae 1 mark
 Formulae, data and labels Fully visible 1 mark
 Orientation Landscape 1 mark
 Print area Selected data only 1 mark

Footer name and numbers 1 mark

| <i>Destination</i> | <i>Code</i> | <i>Trips</i> |
|--------------------|-------------|--------------|
| Bahamas | BAH | 7 |
| Cozumel | COZ | 7 |
| Egypt | EGY | 16 |
| India | IND | 13 |
| Maldives | MAL | 11 |
| Sri Lanka | SRI | 8 |
| Thailand | THA | 12 |

Row 1, 10, 24 Centre aligned
 Only three rows shown
 Bold and italic
 Orientation Portrait
 1 mark
 1 mark
 1 mark

| <i>Month</i> | <i>Mcode</i> | <i>Days</i> |
|--------------|--------------|-------------|
| January | 1 | 28 |
| February | 2 | 31 |
| March | 3 | 42 |
| April | 4 | 69 |
| May | 5 | 104 |
| June | 6 | 80 |
| July | 7 | 77 |
| August | 8 | 55 |
| September | 9 | 83 |
| October | 10 | 66 |
| November | 11 | 125 |
| December | 12 | 70 |

| <i>Day</i> | <i>Month</i> | <i>Year</i> | <i>DCode</i> | <i>Discount</i> | <i>Duration</i> |
|------------|--------------|-------------|--------------|-----------------|-----------------|
| 27 | 9 | 2010 | EGY | Y | 10 |
| 14 | 8 | 2010 | MAL | N | 14 |
| 21 | 8 | 2010 | THA | N | 7 |
| 2 | 8 | 2010 | COZ | Y | 10 |
| 10 | 5 | 2010 | SRI | Y | 14 |
| 27 | 5 | 2010 | BAH | N | 21 |
| 28 | 9 | 2010 | IND | N | 14 |
| 21 | 4 | 2010 | IND | N | 10 |
| 2 | 12 | 2010 | COZ | Y | 14 |
| 16 | 5 | 2010 | EGY | Y | 14 |
| 18 | 11 | 2010 | SRI | Y | 21 |
| 4 | 7 | 2010 | EGY | Y | 7 |
| 11 | 3 | 2010 | THA | N | 7 |
| 3 | 4 | 2010 | COZ | Y | 14 |
| 5 | 6 | 2010 | COZ | Y | 7 |
| 3 | 10 | 2010 | IND | N | 14 |
| 1 | 6 | 2010 | MAL | N | 14 |
| 19 | 6 | 2010 | THA | N | 14 |
| 23 | 11 | 2010 | SRI | N | 14 |
| 5 | 7 | 2010 | THA | Y | 14 |
| 1 | 6 | 2010 | EGY | N | 14 |
| 23 | 12 | 2010 | MAL | Y | 7 |

| | | |
|---------|--------------------------------|----------|
| Page 11 | Mark Scheme: Teachers' version | Syllabus |
| | IGCSE – May/June 2010 | 0417 |

| | | | | | |
|----|----|------|-----|---|----|
| 21 | 10 | 2010 | IND | N | 14 |
| 14 | 11 | 2010 | MAL | N | 10 |
| 1 | 3 | 2010 | BAH | Y | 7 |
| 3 | 1 | 2010 | COZ | Y | 14 |
| 17 | 9 | 2010 | THA | N | 14 |
| 2 | 5 | 2010 | SRI | N | 10 |
| 14 | 8 | 2010 | THA | Y | 7 |
| 31 | 7 | 2010 | THA | Y | 14 |
| 7 | 5 | 2010 | EGY | N | 7 |
| 15 | 5 | 2010 | EGY | Y | 14 |
| 17 | 8 | 2010 | SRI | Y | 7 |
| 21 | 1 | 2010 | BAH | N | 7 |
| 29 | 12 | 2010 | MAL | Y | 14 |
| 5 | 11 | 2010 | THA | Y | 21 |
| 23 | 11 | 2010 | MAL | Y | 14 |
| 29 | 9 | 2010 | IND | Y | 7 |
| 29 | 0 | 2010 | EGY | N | 14 |
| 27 | 10 | 2010 | BAH | Y | 7 |
| 18 | 8 | 2010 | IND | Y | 10 |
| 28 | 7 | 2010 | BAH | Y | 14 |
| 3 | 10 | 2010 | MAL | N | 10 |
| 19 | 0 | 2010 | EGY | Y | 10 |
| 19 | 3 | 2010 | BAH | N | 14 |
| 4 | 6 | 2010 | EGY | Y | 21 |
| 12 | 4 | 2010 | SRI | Y | 10 |
| 4 | 11 | 2010 | EGY | Y | 14 |
| 30 | 5 | 2010 | IND | N | 14 |
| 26 | 9 | 2010 | IND | N | 14 |
| 10 | 4 | 2010 | MAL | Y | 14 |
| 29 | 9 | 2010 | EGY | Y | 10 |
| 26 | 10 | 2010 | IND | N | 14 |
| 7 | 11 | 2010 | MAL | Y | 14 |
| 7 | 12 | 2010 | THA | N | 14 |
| 14 | 12 | 2010 | IND | N | 7 |
| 5 | 6 | 2010 | COZ | N | 10 |
| 25 | 5 | 2010 | EGY | Y | 10 |
| 14 | 7 | 2010 | SRI | Y | 14 |
| 12 | 2 | 2010 | IND | Y | 14 |
| 11 | 1 | 2010 | EGY | Y | 7 |
| 5 | 3 | 2010 | THA | N | 14 |
| 22 | 7 | 2010 | IND | N | 7 |
| 23 | 4 | 2010 | IND | Y | 14 |
| 24 | 12 | 2010 | THA | Y | 14 |
| 20 | 2 | 2010 | THA | Y | 7 |
| 4 | 11 | 2010 | MAL | N | 10 |
| 19 | 10 | 2010 | EGY | N | 7 |
| 13 | 9 | 2010 | EGY | N | 7 |

| | | |
|----------------|---------------------------------------|-----------------|
| Page 12 | Mark Scheme: Teachers' version | Syllabus |
| | IGCSE – May/June 2010 | 0417 |

| | | | | | |
|----|----|------|-----|---|----|
| 17 | 9 | 2010 | MAL | Y | 7 |
| 29 | 4 | 2010 | EGY | Y | 7 |
| 20 | 2 | 2010 | COZ | N | 10 |
| 30 | 11 | 2010 | SRI | Y | 7 |
| 15 | 7 | 2010 | BAH | Y | 7 |

| <i>DCode</i> | <i>Discount</i> | <i>Duration</i> |
|--------------|-----------------|-----------------|
| EGY | Y | 10 |
| EGY | Y | 14 |
| EGY | Y | 7 |
| EGY | Y | 14 |
| EGY | Y | 10 |
| EGY | Y | 21 |
| EGY | Y | 14 |
| EGY | Y | 10 |
| EGY | Y | 10 |
| EGY | Y | 7 |
| EGY | Y | 7 |

| | | |
|----------------|---------------------------------|--------|
| Search | DCode = EGY and Discount = Y | 1 mark |
| Rows | 1–23 hidden | 1 mark |
| Columns | A, B, C Hidden | 1 mark |