

CANDIDATE
NAME

CENTRE
NUMBER

--	--	--	--	--

CANDIDATE
NUMBER

--	--	--	--

MUSIC

0410/01

Paper 1 Listening

For Examination from 2015

PRACTICE QUESTION

Candidates answer on the Question Paper.

No Additional Materials are required.

READ THESE INSTRUCTIONS FIRST

Write your Centre number, candidate number and name on the work you hand in.

Write in dark blue or black pen.

You may use a soft pencil for any diagrams, graphs, music or rough working.

Do not use staples, paper clips, glue or correction fluid.

This practice question supplements the 2015 Specimen Paper for 0410.

Please note: announcements on the accompanying CD refer to questions 'E1' and 'E2'. They correspond to questions 40–45 and 46–49 respectively.

[16 marks]

Western Set Work Practice Question

Mendelssohn: *A Midsummer Night's Dream Overture*

You will hear two extracts of music from *A Midsummer Night's Dream Overture*. Each extract will be played **twice**, with a pause between each playing.

Look at the skeleton score below, and read through questions 40 to 45.

Clarinet in A 2 3 4 5 6 7 8 9

Transpose Violin

Section? Key? 10 11 12 13 14 15

16 17 18 19 20 21 22 23 24

25 26 27 28 29 30 31 32

33 34 35 36 37 38 39 40

Woodwind story?

41 42 43 44 45 46 47 48 49

Woodwind story?

50 51 52 53 54 55 56

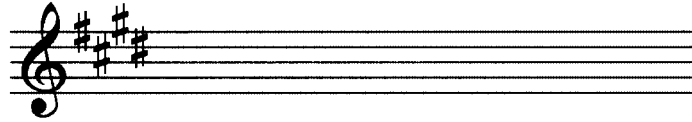
57 58 59 60 61 62 63 64 65

Relationship? Violins?

40 From which section of the exposition is this extract taken?

.....

41 On the staff below, write out the clarinet part in bar 1 at sounding pitch. The key signature has been given. [2]



42 What is the key of this extract?

.....

[1]

43 What feature of the story is represented by the woodwind in bars 37 to 39 and 45 to 47?

.....

[1]

44 Which of the following best describes the relationship between the strings and woodwind and brass in bars 57 to 62?

Antiphony

Call and response

Contrary motion

Question and answer

[1]

45 Describe precisely what is played by the first violins in bars 63 to 64.

.....

.....

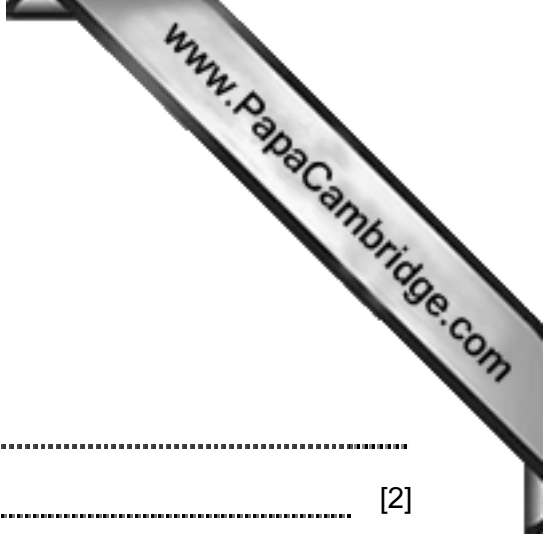
[2]

Look at the skeleton score below, and read through questions 46 to 49.

Violins

Theme? Key? Unusual?

Next?



46 (a) What does this theme represent?

.....

(b) How does Mendelssohn's music portray this?

.....
..... [2]

47 (a) From which section of the exposition is this extract taken?

..... [1]

(b) What is the key of the music at the beginning of the extract?

..... [1]

(c) Why is this unusual?

..... [1]

48 What is the tempo marking at the start of the overture?

..... [1]

49 What is heard in the overture immediately after the recorded extract?

.....
..... [1]

Permission to reproduce items where third-party owned material protected by copyright is included has been sought and cleared where possible. Every reasonable effort has been made by the publisher (UCLES) to trace copyright holders, but if any items requiring clearance have unwittingly been included, the publisher will be pleased to make amends at the earliest possible opportunity.

Cambridge International Examinations is part of the Cambridge Assessment Group. Cambridge Assessment is the brand name of University of Cambridge Local Examinations Syndicate (UCLES), which is itself a department of the University of Cambridge.