

---

**MUSIC**

**0410/01**

Paper 1 Listening

**For Examination from 2015**

SPECIMEN MARK SCHEME

**Approx. 1 hour 15 minutes**

---

**MAXIMUM MARK: 70**

The syllabus is approved for use in England, Wales and Northern Ireland as a Cambridge International Level 1/Level 2 Certificate.

---

This document consists of **6** printed pages.

**Music A1**

- 1 Suggest a suitable *Italian* tempo marking for this music.**

Allegro / Allegretto / Vivace / Alla marcia

- 2 Which of the following compositional techniques are heard in line 4? [1]**

Sequence and imitation

- 3 Section 2 is similar, but not identical, to Section 1. Describe two of the main differences. [2]**

It is in a different key [1]. Sung by male voices [1] not female. It is louder [1] and more instruments play [1].

- 4 Briefly describe how the composer brings out the meaning of the words in Sections 1–3, and Section 4. [2]**

Sections 1–3: The music is lively / joyful (accept any suitable adjective) [1].

Section 4: It is quieter / slower / there are fewer instruments [1].

- 5 This music was written in the Romantic period. Describe two features of the extract which are typical of this period. [2]**

Large orchestra [1]. Prominent use of brass instruments [1]. Unexpected modulations [1].

**Music A2**

- 6 What compositional device is used between the strings and piano in bars 10 – 13? [1]**

Canon (accept imitation)

- 7 Describe the accompaniment to the melody in bars 14 – 17. [2]**

Off-beat [1] chords [1] are played by the full orchestra [1].

- 8 What instrument plays the printed melody in bars 18 – 27? [1]**

Trumpet

- 9 (a) Which of the following styles has influenced this music? [1]**

Jazz

- (b) Give two reasons for your answer. [2]**

Use of syncopation [1]. Use of blue notes / blues scale [1]. Saxophones in the orchestra [1]. Techniques such as flutter-tongueing [1]. Pitch bending [1].

**10 Which of the following do you think composed this music?**

Gershwin

**Music B1**

**11 Which of the following instrumental effects is played by the piano at the beginning of the extract?** [1]

An ascending glissando

**12 What is the main melody instrument?** [1]

Bandoneon (accept Accordion)

**13 Describe the style of this music. You may wish to refer to features such as key, rhythm and articulation in your answer.** [3]

It is in a minor key [1]. The rhythm is syncopated [1] and the articulation is mostly very staccato [1]. It is a tango [1].

**14 Where do you think this music comes from?** [1]

Argentina / Latin America

**Music B2**

**15 What happens in bar 12?** [1]

The melody of bar 11 is repeated

**16 Describe the texture of the music.** [2]

The melody is played in octaves [1]. There is a bass line [1] and off beat chords [1]. It is homophonic / melody and accompaniment [1].

**17 (a) Which part of the world does this music come from?** [1]

China

**(b) Give two reasons for your answer.** [2]

Pentatonic scale [1]. Erh-hu / Chinese orchestra [1]. Instrumental effects such as pitch bending [1].

**Music B3**

**18 What instrument accompanies the voices at the beginning of the extract?**

Xylophone / balafon / marimba

**19 Describe the features of the first passage of music which are typical of African music. [3]**

A solo voice sings [1], and is answered by a group of voices [1] singing the same melody [1] in harmony [1] (accept call and response [1]).

**20 How is the second passage of music different? [3]**

It is much faster [1]. Drums [1] and hand claps [1] are heard [1]. The voices stop singing [1].

**21 Describe the features of the second passage of music which are typical of African music. [3]**

A variety of percussion instruments [1] playing ostinato patterns [1] in layers [1] creating polyrhythm [1].

**Music C1**

**22 What key is the music in at the beginning of the extract? [1]**

E flat (major)

**23 Name the solo instrument. [1]**

(French) horn

**24 The melody is incomplete in bar 19. Fill in the missing notes on the staff below. The rhythm has been given to help you. The same melody is heard again in bar 23. [3]**



Entirely correct: [3]  
 No more than two errors of pitch: [2]  
 The general melodic shape reproduced: [1]  
 Little melodic accuracy: [0]

**25 What compositional device is heard in bars 40–46? [1]**

Pedal

26 Name the cadence in bars 45–46.

Imperfect

27 Name the bracketed interval in bar 48.

Minor [1] third [1]

28 (a) This extract is in ternary form (ABA). Give the bar numbers of the B section.

17–46

(b) How is the B section different from the A section?

Dialogue between horn and orchestra [1]. Horn plays over a wider range [1] with greater dynamic contrast [1]

29 (a) Which period of music is this extract from?

Classical

(b) Give two reasons for your answer.

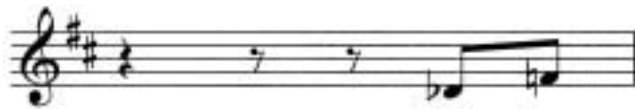
Regular phrase lengths [1]. Diatonic harmony [1] involving much use of tonic and dominant [1]. Small orchestra / string dominated orchestra [1].

### Music D1

30 The accompaniment to the violin melody in bars 1–6 was first heard at the beginning of the movement (before the recorded extract). Describe two ways in which it has changed.

It is now louder [1]. It was originally played by guitar [1] but it is now played by strings [1]. It is an octave higher [1].

31 On the staff below, write out the two notes in the horn part in bar 43 at sounding pitch. The key signature has been given.



One mark per note. (Accept C# and E# as in flute part)

32 The violin part in bar 55 is marked *Col talone*. What does this mean?

With the heel of the bow

**33 How does Rodrigo ensure that the solo guitar is heard above the orchestra in the extract?** [1]

The full orchestra only plays when the guitar isn't playing solos [1]. There is no use of percussion or trombones [1].

**34 What does the title *Concierto de Aranjuez* refer to?** [1]

The gardens of the Royal Palace of Aranjuez (accept e.g. Spanish royal palace / royal gardens)

### Music D2

**35 What is the key at the beginning of the extract?** [1]

F sharp minor

**36 (a) The melody which is heard in bars 1–5 was first played at the beginning of the movement (before the recorded extract). What instrument played it then?** [1]

Cor Anglais

**(b) What key was it in originally?** [1]

B minor

**37 Describe the music of the flutes and oboes in bars 1–8.** [3]

They play the mordent figure [1] (accept any description) in octaves [1] one beat after the violins [1] in imitation [1].

**38 What playing technique is used by the strings on the final chord?** [1]

Harmonics

**39 What happens in this movement immediately before the printed extract?** [1]

There is a cadenza [1] or the guitar plays fast repeated chords after string pizzicatos [1].