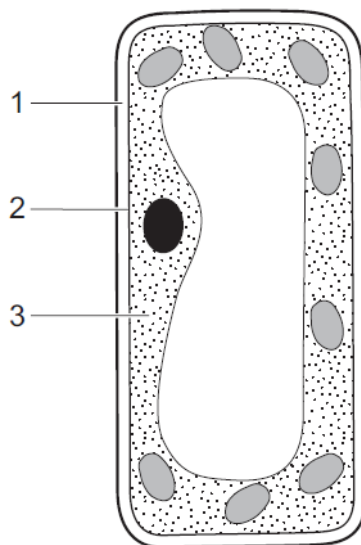


1. Nov/2020/Paper_11/No.1

The diagram shows the structure of a cell from a leaf of a green plant.



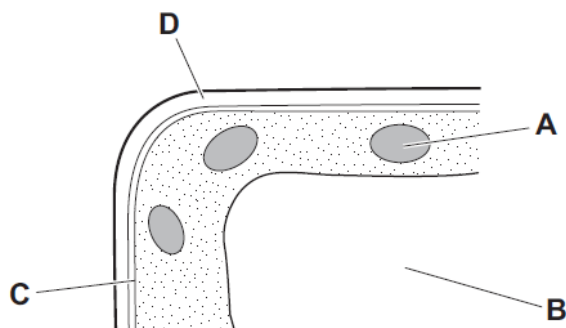
What are the numbered parts of the cell?

| | 1 | 2 | 3 |
|----------|---------------|---------------|---------------|
| A | cell membrane | cell wall | cytoplasm |
| B | cell membrane | cytoplasm | cell wall |
| C | cell wall | cytoplasm | cell membrane |
| D | cell wall | cell membrane | cytoplasm |

2. Nov/2020/Paper_12/No.1

The diagram shows part of a plant cell.

Which part controls the entry of substances into the cell?



3. June/2020/Paper_11/No.1

Which structure is present in a liver cell and in a leaf cell?

- A cell wall
- B chloroplast
- C cytoplasm
- D sap vacuole

4. June/2020/Paper_12/No.1

Starting with the smallest, and ending with the largest, what is the correct sequence of these parts of an organism?

- A chromosome → gene → nucleus → cell → tissue
- B chromosome → gene → nucleus → tissue → cell
- C gene → chromosome → nucleus → cell → tissue
- D gene → chromosome → nucleus → tissue → cell



(a) List the structures within a plant leaf that **do not** possess chloroplasts.

.....
.....
.....
..... [4]

(b) Explain the importance to a plant of

(i) guard cells

.....
.....
.....
.....
..... [4]

(ii) root hair cells.

.....
.....
..... [2]

[Total: 10]

