

**1. June/2022/Paper\_11/No.2**

The diagram shows the shape of a red blood cell.



What is an advantage of this shape?

- A allows it to carry more haemoglobin
- B allows it to move more quickly in arteries
- C increases its surface area for diffusion
- D prevents it getting trapped in valves in veins

**2. June/2022/Paper\_11/No.14**

Which blood vessels carry blood towards the heart and towards the lungs?

	towards heart	towards lungs
A	aorta	pulmonary artery
B	vena cava	pulmonary artery
C	aorta	pulmonary vein
D	vena cava	pulmonary vein

**3. June/2022/Paper\_11/No.16**

People who have a diet that contains a lot of fat and who smoke have two important risk factors for which disease?

- A anaemia
- B coronary heart disease
- C emphysema
- D scurvy

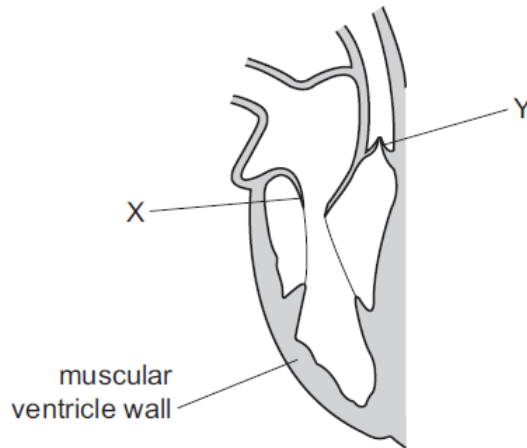
**4. June/2022/Paper\_12/No.14**

Which blood vessels, linked directly to the heart, transport deoxygenated blood?

- A aorta and pulmonary artery
- B aorta and pulmonary vein
- C vena cava and pulmonary artery
- D vena cava and pulmonary vein

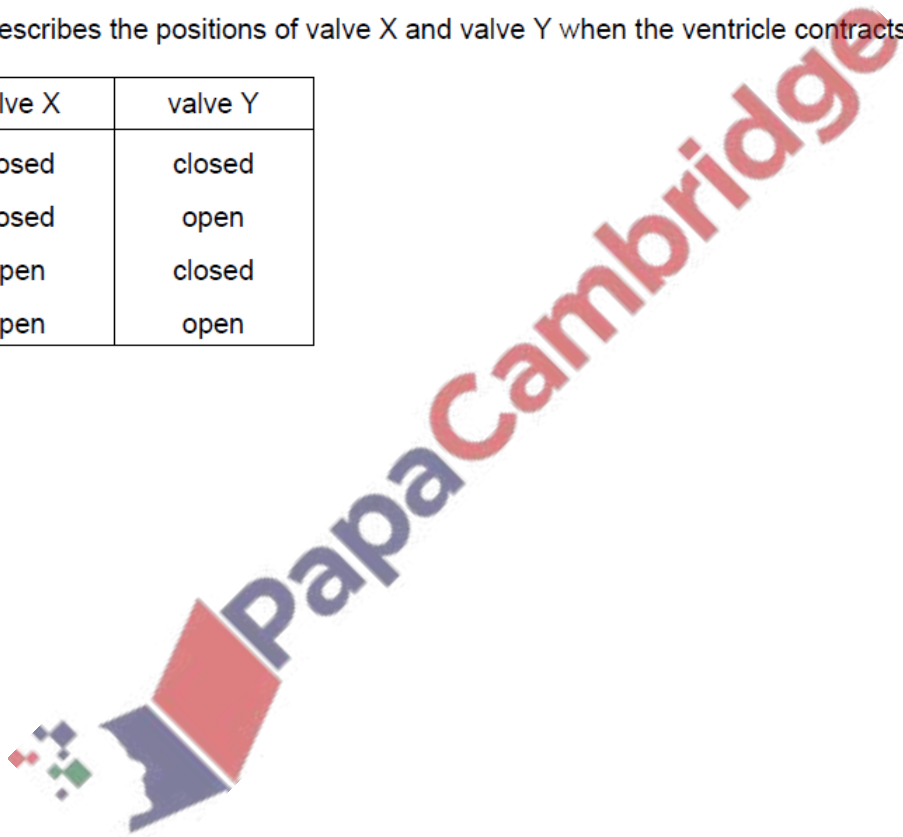
5. June/2022/Paper\_12/No.15

The diagram shows the right side of the human heart when the ventricle is relaxed.



Which row describes the positions of valve X and valve Y when the ventricle contracts?

	valve X	valve Y
<b>A</b>	closed	closed
<b>B</b>	closed	open
<b>C</b>	open	closed
<b>D</b>	open	open



6. June/2022/Paper\_12/No.16

Which component of the blood stimulates the formation of fibres to help seal a wound?

- A** plasma
- B** platelets
- C** red blood cells
- D** white blood cells



