

Excretion – 2022 November O Level 5090

1. **Nov/2022/Paper_11/No.11**

Which function is **not** carried out by the liver?

- A breakdown of alcohol
- B conversion of glycogen to glucose
- C formation of urea
- D secretion of digestive enzymes

2. **Nov/2022/Paper_11/No.20**

How do the concentrations of oxygen and urea in the renal artery compare to their concentrations in the renal vein?

	oxygen in renal artery	urea in renal artery
A	higher	higher
B	higher	lower
C	lower	higher
D	lower	lower

3. **Nov/2022/Paper_11/No.21**

Which changes occur when a person walks from a very cold room into a hot room?

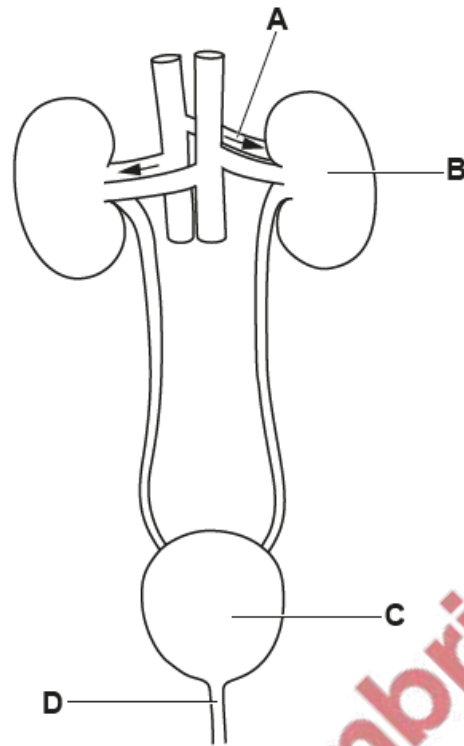
	sweating	skin blood vessels
A	decreases	constrict
B	decreases	dilate
C	increases	dilate
D	increases	constrict

4. **Nov/2022/Paper_12/No.20**

What are two main functions of the kidneys?

- A to make toxins in the blood harmless and to remove excess salt in the blood
- B to remove excess salt in the blood and to remove urea from the blood plasma
- C to remove urea from the blood plasma and to convert glucose to glycogen
- D to convert glucose to glycogen and to make toxins in the blood harmless

The diagram shows parts of the human body involved in excretion.



(a) Name the liquid that passes out of the human body through tube **D** and the waste product it contains.

liquid

waste product

[2]

(b) Describe how parts **A**, **B** and **C** are involved in removing the waste product that passes out of tube **D**.

.....
.....
.....
.....
.....

[3]

[Total: 5]