



Cambridge O Level

CANDIDATE
NAME

--

CENTRE
NUMBER

--	--	--	--	--

CANDIDATE
NUMBER

--	--	--	--



FASHION & TEXTILES

6130/01

Paper 1 Theory

October/November 2023

2 hours

You must answer on the question paper.

You will need: Ruler
Small piece of fabric, needle and thread

INSTRUCTIONS

- Answer **four** questions in total:
Section A: answer **all** parts of Question 1.
Section B: answer **three** questions.
- Use a black or dark blue pen.
- Write your name, centre number and candidate number in the boxes at the top of the page.
- Write your answer to each question in the space provided.
- Do **not** use an erasable pen or correction fluid.
- Do **not** write on any bar codes.
- You may use an HB pencil for any diagrams or rough working.
- You should illustrate your answers with clear, bold diagrams wherever necessary.
- You may use a needle and thread and a small piece of fabric to help in making drawings of stitches.
- This fabric should **not** be handed in with your work.

INFORMATION

- The total mark for this paper is 100.
- The number of marks for each question or part question is shown in brackets [].

This document has **20** pages.

Section A

Answer **all** questions in this section.

1 Fig. 1.1 is a drawing of a coat.

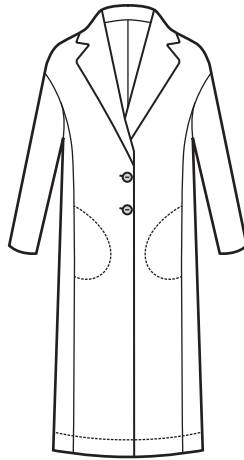


Fig. 1.1

(a) (i) The coat in Fig. 1.1 is made from poplin fabric for summer wear. Describe poplin fabric.

Appearance

Feel/handle

[2]

(ii) State **two** reasons why poplin fabric is suitable for the coat shown in Fig 1.1.

.....
.....
.....
..... [2]

(iii) Identify **two** performance characteristics of cotton fibre that make it suitable for the poplin fabric to make the coat in Fig 1.1.

1

2

[2]

- (iv) Suggest **two** synthetic fibres that could be blended with cotton fibres to improve the performance characteristics. Give **one** reason for each suggestion.

Fibre 1

Reason

Fibre 2

Reason

[4]

- (v) Identify **one** fabric that could be used if the coat in Fig. 1.1 is to be worn in winter. Give **one** reason for the choice.

Fabric

Reason

[2]

- (b) (i) Identify where interfacing should be used when making the coat in Fig. 1.1.

..... [1]

- (ii) State **three** reasons to use interfacing in the coat in Fig 1.1.

1

2

3

[3]

- (iii) Identify **three** methods that could be used to make buttonholes on the coat in Fig. 1.1.

1

2

3

[3]

- (c) (i) Identify **one** suitable fibre for lining fabric for the coat in Fig. 1.1.

..... [1]

- (ii) State **four** ways in which a lining will improve the quality of the coat in Fig. 1.1.

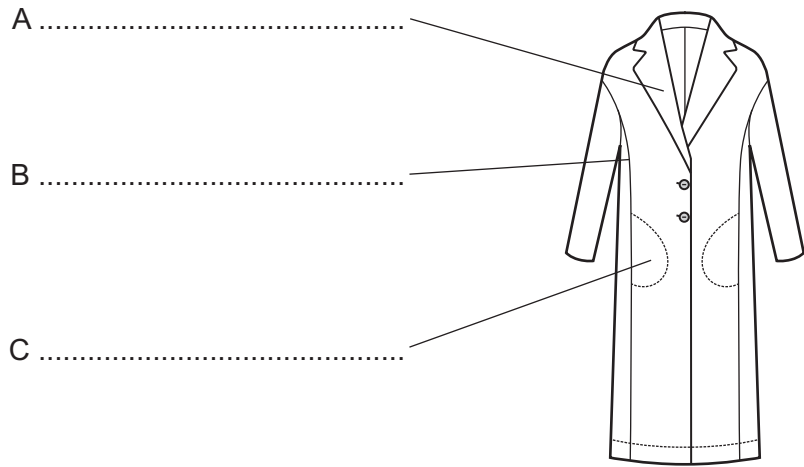
.....

.....

.....

..... [4]

(d) Label the style details on the coat shown below.



[3]

(e) Identify **four** cutting tools used in home garment making.

- 1
- 2
- 3
- 4

[4]

(f) (i) Suggest **three** processes in which tacking might be used to improve accuracy.

-
-
-
-
-
-

[3]

(ii) Explain how to work tacking stitches. You should use labelled diagrams to support your answer.

.....

.....

.....

.....

.....

.....

.....

.....

[4]

(g) Identify **two** uses for fabrics that change in response to light.

.....

.....

.....

..... [2]

[Total: 40]

Section B

Answer **three** questions from this section.

2 (a) (i) State the origin of linen fibres.

..... [1]

(ii) Explain how linen fibres are obtained.

.....
.....
.....
.....
.....
.....
.....
.....
.....
.....
..... [4]

(b) State **three** ways to stop linen fabric fraying before and during garment construction.

.....
.....
.....
.....
.....
.....
..... [3]

3 Fig. 3.1 is a drawing of a shopping bag.

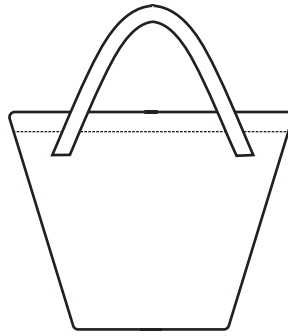


Fig. 3.1

(a) (i) Identify **one** plain fabric to make the shopping bag in Fig. 3.1.

..... [1]

(ii) State **two** reasons for your choice of fabric in 3(a)(i).

.....
.....
.....
..... [2]

(b) Suggest **two** ways of fastening the shopping bag in Fig 3.1 to make it more secure.

.....
.....
.....
..... [2]

(c) Identify **three** methods of using dyes or fabric paints to add colour to the shopping bag in Fig. 3.1.





- 1
 - 2
 - 3
- [3]

- (e) Sketch and label a design for a small bag in which to store the folded shopping bag in Fig. 3.1 when it is not in use. The small bag must be embellished and have a suitable fastening to stop the folded shopping bag from falling out.

[6]

[Total: 20]

4 (a) Explain the meaning of each of the following symbols found on commercial garment patterns.

Symbol	Meaning
	
	
	
	

[4]

(b) State **one** reason to press work after each of the processes listed below.

Seam

.....

.....

Dart

.....

.....

Finished garment

.....

.....

Collar

.....

.....

[4]

5 (a) (i) Explain how to make felt from wool fibres.

.....
.....
.....
.....
.....
.....
.....
..... [4]

(ii) Identify **two** accessories that could be made from felt.

.....
..... [2]

(iii) Suggest **two** embroidery stitches that could be used effectively to embellish felt.

1
2 [2]

6 (a) Explain how to make knife pleats in a skirt. You may use labelled diagrams to support your answer.

.....

.....

.....

.....

.....

.....

.....

[4]

(b) State **four** items of information other than care instructions found on a garment label.

1

2

3

4

[4]

