



Cambridge O Level

CANDIDATE NAME



CENTRE NUMBER

| | | | | |
|--|--|--|--|--|
| | | | | |
|--|--|--|--|--|

CANDIDATE NUMBER

| | | | |
|--|--|--|--|
| | | | |
|--|--|--|--|



FASHION & TEXTILES

6130/01

Paper 1 Theory

October/November 2024

2 hours

You must answer on the question paper.

You will need: Ruler
Small piece of fabric, needle and thread

INSTRUCTIONS

- Answer **four** questions in total:
Section A: answer **all** parts of Question 1.
Section B: answer **three** questions.
- Use a black or dark blue pen.
- Write your name, centre number and candidate number in the boxes at the top of the page.
- Write your answer to each question in the space provided.
- Do **not** use an erasable pen or correction fluid.
- Do **not** write on any bar codes.
- You may use an HB pencil for any diagrams or rough working.
- You should illustrate your answers with clear, bold diagrams wherever necessary.
- You may use a needle and thread and a small piece of fabric to help in making drawings of stitches.
- This fabric should **not** be handed in with your work.

INFORMATION

- The total mark for this paper is 100.
- The number of marks for each question or part question is shown in brackets [].

This document has **24** pages. Any blank pages are indicated.





(iv) Sketch the care symbols for the protein fibre identified in 1(b)(iii).

| Care process | Sketch of care symbol |
|--------------|-----------------------|
| Wash | |
| Iron | |

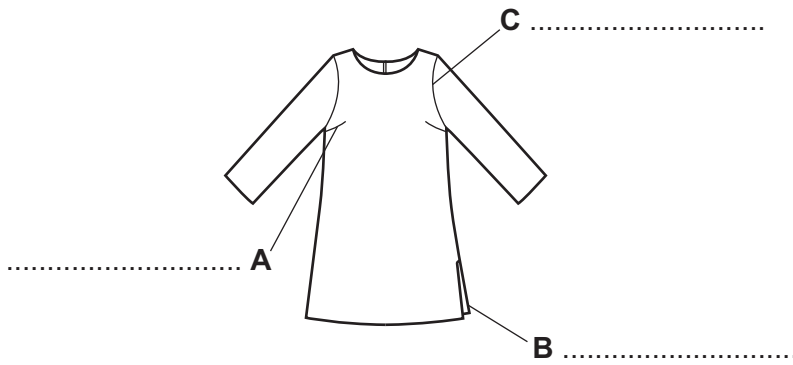
[2]

(c) (i) Identify **one** way to fasten the back neck opening of the tunic of the salwar kameez suit in Fig. 1.1.

.....

..... [1]

(ii) Label the features shown on the drawing below:



[3]

(iii) Identify **two** techniques that could be used to embellish the lower edges of the tunic and trousers shown in Fig. 1.1.

.....

..... [2]

DO NOT WRITE IN THIS MARGIN





(iv) Explain how to carry out **one** of the techniques identified in question 1(c)(iii).

.....

.....

.....

.....

.....

.....

.....

.....

.....

..... [4]

(d) (i) Suggest **one** way to change the style/shape of the legs of the trousers shown in Fig. 1.1.

.....

..... [1]

DO NOT WRITE IN THIS MARGIN

DO NOT WRITE IN THIS MARGIN

DO NOT WRITE IN THIS MARGIN

DO NOT WRITE IN THIS MARGIN

DO NOT WRITE IN THIS MARGIN





(ii) Describe how to make the casing at the waist of the trousers shown in Fig. 1.1. You may use diagrams to support your answer.

.....
.....
.....
.....
.....
.....
.....
.....
.....
.....

[5]

DO NOT WRITE IN THIS MARGIN





3 Fig. 3.1 is a photograph of a knitted cardigan.



Fig. 3.1

(a) Identify the type of sleeve in the knitted cardigan in Fig. 3.1.

..... [1]

(b) (i) Identify the type of knitted construction used to make the cardigan in Fig. 3.1.

..... [1]

DO NOT WRITE IN THIS MARGIN





(ii) Explain how to make the type of knitted construction identified in **3(b)(i)**. You must use a labelled diagram to support your answer.

.....

.....

.....

.....

.....

.....

.....

.....

.....

.....

[5]

DO NOT WRITE IN THIS MARGIN

DO NOT WRITE IN THIS MARGIN

DO NOT WRITE IN THIS MARGIN

DO NOT WRITE IN THIS MARGIN

DO NOT WRITE IN THIS MARGIN





6 (a) (i) Identify **two** hand embroidery stitches.

.....
..... [2]

(ii) Explain how to stitch **one** of the hand embroidery stitches identified in **6(a)(i)**. You may use labelled diagrams to support your answer.

.....
.....
.....
.....
.....
.....
.....
.....
.....
.....

[4]

DO NOT WRITE IN THIS MARGIN





BLANK PAGE

DO NOT WRITE IN THIS MARGIN

DO NOT WRITE IN THIS MARGIN

DO NOT WRITE IN THIS MARGIN

DO NOT WRITE IN THIS MARGIN

DO NOT WRITE IN THIS MARGIN

Permission to reproduce items where third-party owned material protected by copyright is included has been sought and cleared where possible. Every reasonable effort has been made by the publisher (UCLES) to trace copyright holders, but if any items requiring clearance have unwittingly been included, the publisher will be pleased to make amends at the earliest possible opportunity.

To avoid the issue of disclosure of answer-related information to candidates, all copyright acknowledgements are reproduced online in the Cambridge Assessment International Education Copyright Acknowledgements Booklet. This is produced for each series of examinations and is freely available to download at www.cambridgeinternational.org after the live examination series.

Cambridge Assessment International Education is part of Cambridge Assessment. Cambridge Assessment is the brand name of the University of Cambridge Local Examinations Syndicate (UCLES), which is a department of the University of Cambridge.

