

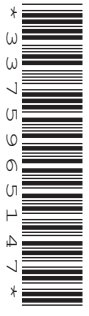


UNIVERSITY OF CAMBRIDGE INTERNATIONAL EXAMINATIONS
General Certificate of Education Ordinary Level

CANDIDATE NAME

CENTRE NUMBER

CANDIDATE NUMBER



FASHION AND FABRICS **6050/01**
 Paper 1 Theory **October/November 2009**
2 hours

Candidates answer Section A on the Question Paper.
 Additional Materials: Answer Booklet/Paper
 Coloured pencils (not yellow)
 Ruler
 Small piece of fabric, needle and thread

READ THESE INSTRUCTIONS FIRST

Write your Centre number, candidate number and name on all the work you hand in.
 Write in dark blue or black pen.
 You may use a soft pencil for any diagrams, graphs or rough working.
 Do not use staples, paper clips, highlighters, glue or correction fluid.
DO NOT WRITE IN ANY BARCODES.
 The Insert is for use with Questions 1, 5, 6 and 7.
 You should illustrate your answers by means of clear, bold diagrams wherever possible.
 You may use a needle and thread and a small piece of fabric to help in making drawings of stitches.
 This fabric should **not** be handed in with your work.

Section A
 Answer **all** parts of Question 1 in the spaces provided on the Question Paper.
 You are advised to spend no longer than 40 minutes on Section A.

Section B
 Answer any **three** questions.
 Write your answers on the separate Answer Booklet/Paper provided.
 Enter the numbers of the **Section B** questions you have answered in the grid below.

At the end of the examination, fasten all your work securely together.
 The number of marks is given in brackets [] at the end of each question or part question.

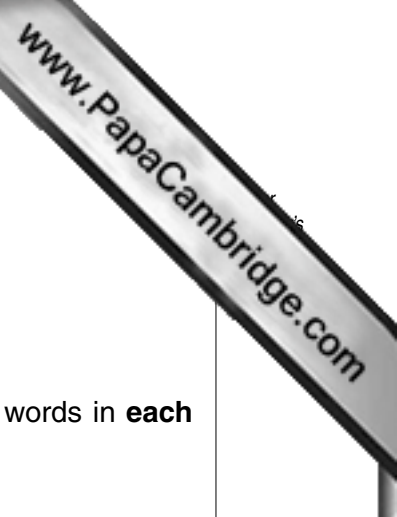
For Examiner's Use	
Section A	
Section B	/
Total	

This document consists of **7** printed pages, **1** blank page and **1** Insert.

Section A

Answer **all** questions in the spaces provided.

Refer to the Insert.



1 (a) Name the style features/items labelled on the Insert. Use at least **two** words in **each** case.

- A
- B
- C
- D
- E
- F
- G
- H
- I
- J

[10]

(b) The pattern suggests that crepe and jersey fabric are suitable for the dress view **A**. Complete the following details.

(i) **Fabric: crepe**

- Fibre content:
- Structure:
- Appearance:
- Feel/handle:
- Weight:

[5]

(ii) **Fabric: jersey**

- Fibre content:
- Structure:
- Appearance:
- Feel/handle:
- Weight:

[5]

(c) Give **two** reasons why the jersey fabric described in (b)(ii) would be suitable for the dress view **A**.

-
-

[2]

(d) Complete the following details of requirements to make the dress view **A** in size 10 using jersey fabric, as described in (b)(ii).

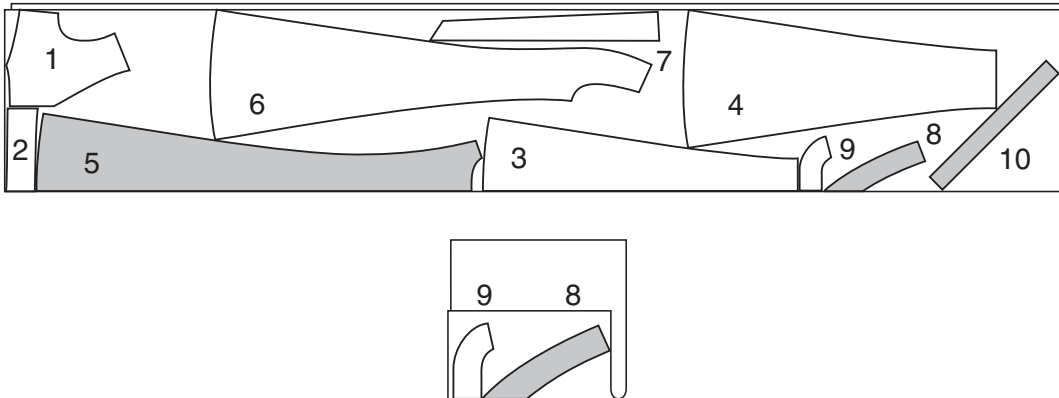
Fabric: Jersey width: amount

Interfacing: width: type: amount

Thread: type: amount

[7]

(e) The fabric and interfacing layouts for the dress, view **A**, are shown below.



(i) Label the fold and selvages on **both** layouts. [5]

(ii) Name the pattern pieces in the layouts above.

- | | | | |
|---|-------|----|-------|
| 1 | | 6 | |
| 2 | | 7 | |
| 3 | | 8 | |
| 4 | | 9 | |
| 5 | | 10 | |

[10]

(iii) Give **two** reasons for using interfacing on the jersey fabric described in (b)(ii).

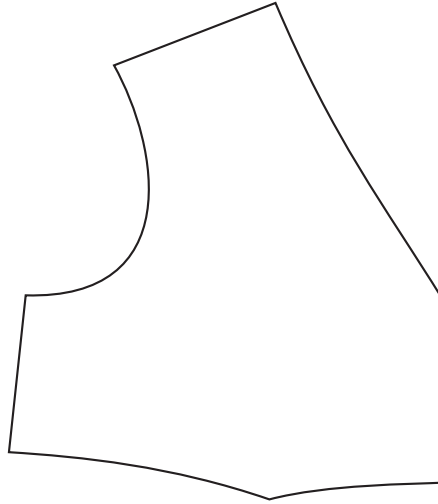
.....
 [2]

(iv) State the order of work for attaching the interfacing to the jersey fabric.

.....

 [4]

- (f) (i) Draw and label **seven** pattern markings on the pattern piece below. The **back** and **centre front position** must be included.



[7]

- (ii) Using notes and diagrams, show how to alter the neckline of the bodice pattern in (f)(i), to a square neckline.

[4]

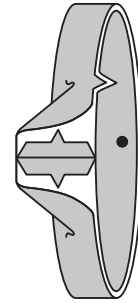
- (iii) Using notes and labelled diagrams, show how to make a facing for the new neckline shape in (f)(ii).

[4]

(g) Complete the following instructions for making the armhole facing, using words from the following list:

- open small dots right sides wrong sides top tacking inner
 clip trim shoulder seam half small dot

(i) With together, stitch
 of armhole facing.
 Press

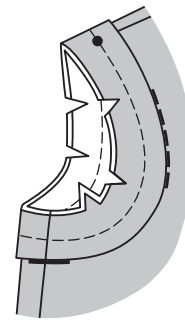


[3]

(ii) Fold facing in,
 lengthwise, with together,
 matching Press flat.

[3]

(iii) On the right side, pin facing to armhole edge,
 placing at
 seam and match
 remaining seams.

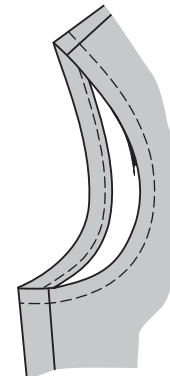


[2]

(iv) Stitch seams.
 seam and curves.

[2]

(v) Turn facing to inside. Press. Tack/baste close to
 edge of facing.



[1]

(vi) On the right side, stitch along
 armhole edge. Remove Press.

[2]

[Total: 78]

Section B

Answer **three** questions from this section.

- 2 (a) Name the **two** raw materials needed to make viscose fibres. [2]
- (b) Briefly explain the production of viscose fibres. [4]
- (c) State **six** properties of viscose fibres. [6]
- (d) Draw and explain a care label which you would expect to find inside a garment made from 100% viscose. [4]
- (e) Give **two** reasons why viscose is often blended with cotton fibres. [2]

[Total: 18]

- 3 (a) Discuss the following finishes and their effect on fabrics:
- (i) antistatic; [2]
- (ii) easy-care; [2]
- (iii) flame retardant; [2]
- (iv) brushing. [2]
- (b) Using notes and labelled diagrams, explain how to work a continuous strip opening on a cotton/polyester nightshirt. [6]
- (c) Name **two** pieces of small equipment used when working the continuous strip opening and explain **one** reason for using each. [4]

[Total: 18]

- 4 (a) Explain the difference between a fibre and a fabric. [2]
- (b) State **one** use for **each** of the following fabrics:
- (i) wool felt; [1]
- (ii) polyester satin; [1]
- (iii) cotton denim; [1]
- (iv) nylon chiffon. [1]
- (c) Give **two** reasons why **each** fabric is suitable for the use stated in (b). [8]
- (d) Explain how the following are constructed:
- (i) wool felt; [2]
- (ii) polyester satin. [2]

[Total: 18]

5 Refer to the Insert.

Using notes and labelled diagrams, explain how to work:

- (a) the belt for the dress view **D**; [6]
- (b) lace trimming to the neckline of the dress view **D**; [6]
- (c) a French seam on the side seam of the dress view **A**. [6]

[Total: 18]

6 Refer to the Insert.

- (a) Sketch a design which would be suitable for a repeated block print to be used on the hem edge of the trousers, view **F**. [3]
- (b) Explain how to:
 - (i) prepare the fabric for printing; [3]
 - (ii) colour the block ready for printing onto fabric; [3]
 - (iii) fix the colour after printing has been carried out; [2]
 - (iv) care for the trousers once the printing has been completed. [2]
- (c) Using notes and labelled diagrams, explain how to work the elasticated waist for the trousers, view **F**. [5]

[Total: 18]

7 Refer to the Insert.

- (a) Using notes and labelled diagrams, explain how to work the following stitches:
 - (i) running stitch; [3]
 - (ii) loop stitch; [3]
 - (iii) herringbone stitch. [3]
- (b) Draw a sketch to show how the stitches in (a) could be used to decorate the neckline on the dress view **A**. [3]
- (c) Explain the correct way to press:
 - (i) the hand embroidered neckline sketched in (b); [2]
 - (ii) a plain seam; [2]
 - (iii) a hem. [2]

[Total: 18]

Copyright Acknowledgements:

Question 1 © Simplicity Pattern Co.

Permission to reproduce items where third-party owned material protected by copyright is included has been sought and cleared where possible. Every reasonable effort has been made by the publisher (UCLES) to trace copyright holders, but if any items requiring clearance have unwittingly been included, the publisher will be pleased to make amends at the earliest possible opportunity.

University of Cambridge International Examinations is part of the Cambridge Assessment Group. Cambridge Assessment is the brand name of University of Cambridge Local Examinations Syndicate (UCLES), which is itself a department of the University of Cambridge.