



UNIVERSITY OF CAMBRIDGE INTERNATIONAL EXAMINATIONS  
General Certificate of Education Ordinary Level

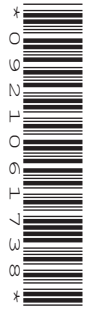
CANDIDATE NAME

CENTRE NUMBER 

--	--	--	--	--

CANDIDATE NUMBER 

--	--	--	--



**FASHION AND FABRICS** **6050/01**  
Paper 1 Theory **October/November 2010**  
**2 hours**

Candidates answer Section **A** on the Question Paper.  
Additional Materials: Answer Booklet/Paper  
Coloured pencils (not yellow)  
Ruler  
Small piece of fabric, needle and thread

**READ THESE INSTRUCTIONS FIRST**

Write your Centre number, candidate number and name on all the work you hand in.  
Write in dark blue or black pen.  
You may use a soft pencil for any diagrams, graphs or rough working.  
Do not use staples, paper clips, highlighters, glue or correction fluid.  
**DO NOT WRITE IN ANY BARCODES.**  
The Insert is for use with Questions 1, 5 and 7.  
  
You should illustrate your answers with clear, bold diagrams wherever possible.  
You may use a needle and thread and a small piece of fabric to help in making drawings of stitches.  
This fabric should **not** be handed in with your work.

**Section A**  
Answer **all** parts of Question 1 in the spaces provided on the Question Paper.  
You are advised to spend no longer than 40 minutes on Section A.

**Section B**  
Answer any **three** questions.  
Write your answers on the separate Answer Booklet/Paper provided.  
Enter the numbers of the **Section B** questions you have answered in the grid on this page.

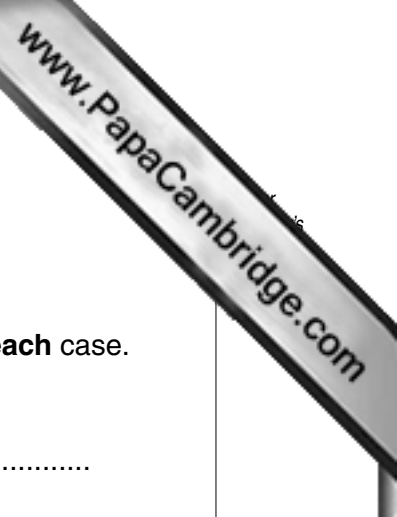
At the end of the examination, fasten all your work securely together.  
The number of marks is given in brackets [ ] at the end of each question or part question.

For Examiner's Use	
<b>Section A</b>	
<b>Section B</b>	/
<b>Total</b>	

This document consists of **9** printed pages and **3** blank pages and **1** insert.

Section A

Answer **all** the questions in the spaces provided.



1 (a) Refer to the Insert. Name the style features using at least **two** words in **each** case.

- A .....
- B .....
- C .....
- D .....
- E .....
- F .....
- G .....
- H .....
- I .....
- J .....
- K .....
- L .....

[12]

(b) The pattern suggests using **Voile** and **Jersey** fabrics to make the top, **View B**. Complete the following details:

(i) **Fabric: Voile**

- Fibre: .....
- Structure: .....
- Appearance: .....
- Feel/handle: .....
- Weight: .....

[5]

(ii) **Fabric: Jersey**

- Fibre: (different fibre content from (b)(i)) .....
- Structure: .....
- Appearance: .....
- Feel/handle: .....
- Weight: .....

[5]



(iii) State **two** reasons why the **Voile** fabric described in (i) is suitable for the top, **View B**.

.....  
.....  
.....  
..... [2]

(iv) A French seam has been chosen to join the side seams of the top, **View B**. Give **two** reasons why a French seam could be suitable.

.....  
.....  
.....  
..... [2]

(c) (i) State **two** body measurements which would be needed for the dress, **View A**.

.....  
..... [2]

(ii) Explain why it is important to measure the body when choosing a pattern.

.....  
..... [1]

(iii) Explain how to measure the body accurately.

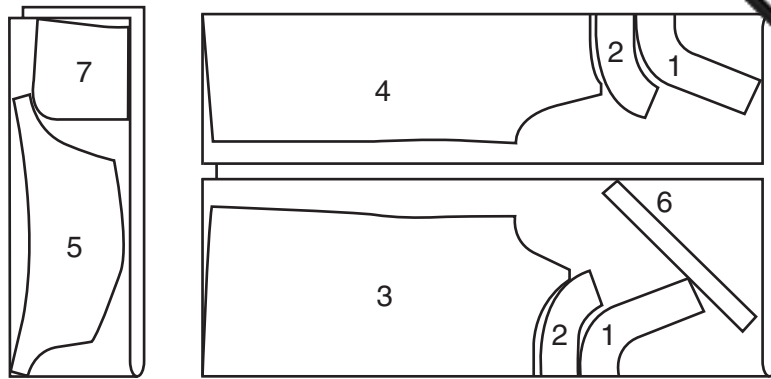
.....  
..... [1]

(d) (i) Refer to the Insert. Complete the following list of requirements to make the top, **View B**, in size **10**:

Fabric: **Voile** Width: ..... Amount: .....  
Interfacing: Type: ..... Width: ..... Amount: .....  
Thread: Fibre Content: ..... Amount: .....  
[7]

(e) Refer to the Insert. The fabric layout for the top, **View B**, is given below:

58" 60" (150 CM)  
WITH OR WITHOUT NAP



**Fig. 1**

(i) Label the folds and selvages on the layouts. [5]

(ii) Name the pattern pieces.

- 1 .....
- 2 .....
- 3 .....
- 4 .....
- 5 .....
- 6 .....
- 7 .....

[7]

(iii) Explain why the layout uses two pieces of fabric.

.....  
..... [1]

(iv) Give **one** reason why **piece 6** has been laid diagonally on the fabric.

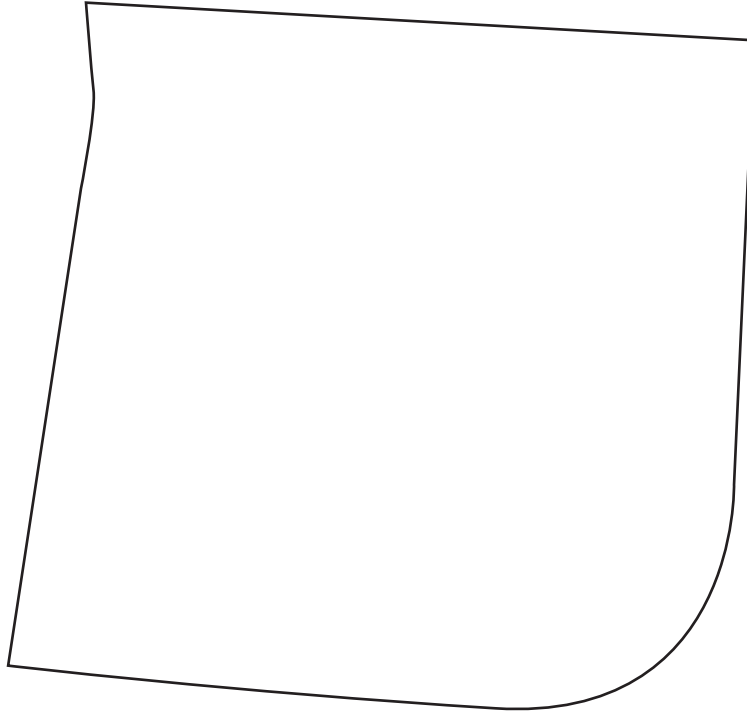
.....  
..... [1]

(v) Explain **one** way to make sure **pieces 3** and **4** are not mixed up when making up the top, **View B**.

.....  
..... [1]

(f) (i) On the pattern piece of a pocket printed below, draw and label the following markings:

- Straight grain line
- balance mark
- fold line
- seam allowance
- cutting line
- seam line



[6]

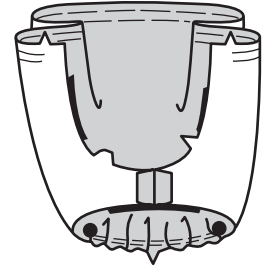
(ii) Give **one** reason why **each** of the following pattern markings is important in making the pocket.

- Straight Grain line ..... [1]
- Balance mark ..... [1]
- Fold line ..... [1]
- Seam line ..... [1]

(g) Complete the instructions for making the **sleeve, View B**, using words from the following list:

- unnotched      seams      tying or pinning      large dots      hemming  
 zig-zag      notches      gather      sleeve binding      right sides

(i) ..... the top edge of the sleeve between the .....



[2]

(ii) Gather the lower edge of the sleeve between the .....

[1]

(iii) Pull up gathers on lower edge to fit the .....

[1]

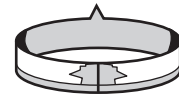
(iv) Fasten ends securely by .....

[1]

(v) Stitch underarm seam and neaten edges using ..... stitch.

[1]

(vi) Prepare sleeve binding by stitching ends and pressing under 1 cm along ..... edge.



[1]

(vii) With ..... together, pin binding to lower edge of sleeve, matching large dots and ..... Machine stitch along seam line. Press.



[2]

(viii) On inside, pin pressed edge of binding over the seam.

Secure using ..... stitch.



[1]

(h) Draw and describe **three** symbols which would be found on a care label attached to the top, **View B**, when made from the **Voile** fabric described in **1(b)(i)**:

[6]

[Total: 78 to be scaled]

## Section B

Answer **three** questions from this section.

- 2 (a) State the origin of polyester fibres. [2]
- (b) Give **six** important properties of polyester fibres. [6]
- (c) Name and describe **one** knitted fabric made from polyester. [6]
- (d) When making a shirt/blouse from polyester lawn, explain how to press it correctly during construction. Include details of equipment needed. [4]

[Total: 18]

- 3 (a) Give **four** well explained points which need to be considered when choosing **styles** of clothes for children. [4]
- (b) (i) List **four** fabrics which would be suitable for children's garments. Include the fibre content in your answer. [4]
- (ii) Outline **one** reason for **each** choice in (b)(i). [4]
- (c) Using labelled diagrams and notes, explain how **three** garments for children could be altered or adapted to extend their life. [6]

[Total: 18]

- 4 Using notes and labelled diagrams, compare the following terms, stating **one** place where **each** could be used in garment making:
- (a) 'with nap' and 'without nap'; [4]
- (b) 'clip curves' and 'trim corners'; [4]
- (c) 'top stitching' and 'under-stitching'; [4]
- (d) 'tacking' and 'tailor's tacks'. [6]

[Total: 18]



5 Refer to the Insert, top, **View B**.

- (a) (i) Give **two** reasons why interfacing could be used in the yoke. [2]  
 (ii) Explain how you could apply the interfacing. [2]
- (b) Using notes and labelled diagrams, explain how to:
- (i) prepare the yoke sections for the top; [4]  
 (ii) attach the yoke to the main body of the top; [4]  
 (iii) attach the lining to the yoke, including hand stitching. [6]

[Total: 18]

6 Using notes and labelled diagrams, explain how to:

- (a) cut a crossway strip using a striped cotton fabric; [4]  
 (b) join a crossway strip; [4]  
 (c) use the crossway strip to
- (i) make a faced edge along a hem; [5]  
 (ii) make a bound edge along a curve. [5]

[Total: 18]

7 Refer to the Insert, top, **View B**.

- (a) Draw a sketch to show how the yoke section of the top could be decorated using:
- (i) traditional hand stitching; [2]  
 (ii) decorative machine stitching. [2]
- (b) Using notes and labelled diagrams, explain how to
- (i) carry out the traditional hand stitching; [4]  
 (ii) work the decorative machine stitching. [4]
- (c) List **three** pieces of equipment required for the decorative machine stitching, stating a reason for your choice in **each** case. [6]

[Total: 18]





---

*Copyright Acknowledgements:*

Questions 1, 5, 7 © New Look Pattern 6785; 2008; [www.simplicity.com](http://www.simplicity.com).

Permission to reproduce items where third-party owned material protected by copyright is included has been sought and cleared where possible. Every reasonable effort has been made by the publisher (UCLES) to trace copyright holders, but if any items requiring clearance have unwittingly been included, the publisher will be pleased to make amends at the earliest possible opportunity.

University of Cambridge International Examinations is part of the Cambridge Assessment Group. Cambridge Assessment is the brand name of University of Cambridge Local Examinations Syndicate (UCLES), which is itself a department of the University of Cambridge.