



UNIVERSITY OF CAMBRIDGE INTERNATIONAL EXAMINATIONS
General Certificate of Education Ordinary Level

www.PapaCambridge.com

GEOGRAPHY

2217/13

Paper 1

October/November 2011

INSERT

1 hour 45 minutes

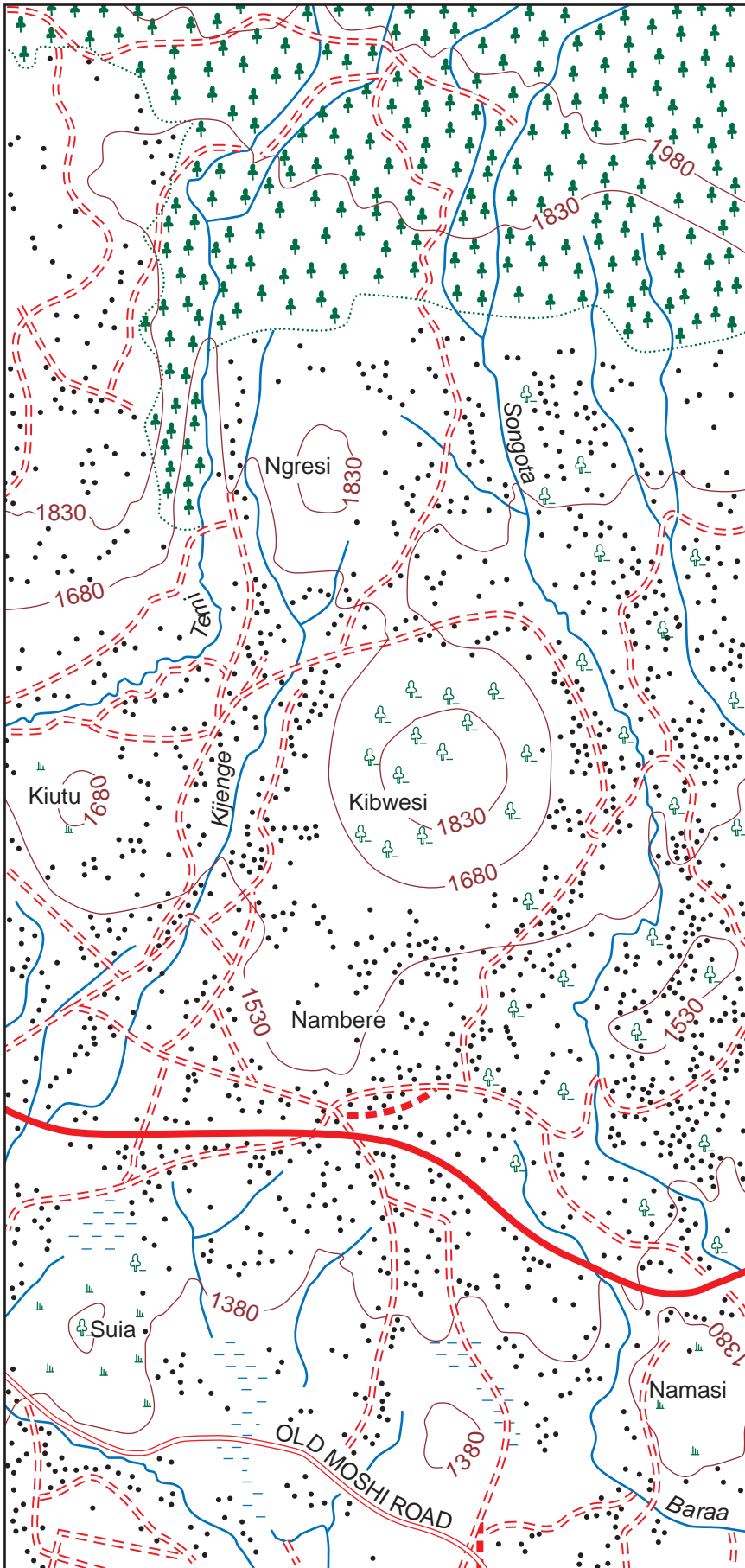
READ THESE INSTRUCTIONS FIRST

This Insert contains Fig. 4 for Question 2, Photographs A, B, C and D for Question 3 and Photograph E for Question 6.

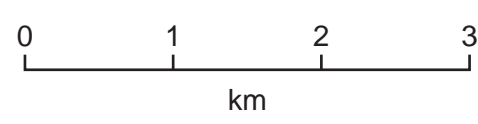
This document consists of **6** printed pages and **2** blank pages.



Fig. 4 for Question 2



- Key**
- 1980 — Contours (in metres)
 - Rivers
 - All weather road
 - Dry weather road
 - == Tracks and footpaths
 - Huts / settlements
 - Forest
 - Bush and scattered trees
 - Bush and scrub
 - Seasonal swamp



Photograph A for Question 3



Photograph B for Question 3



Photograph C for Question 3



Photograph D for Question 3



Photograph E for Question 6



