

Centre Number	Candidate Number	Name
---------------	------------------	------

CAMBRIDGE INTERNATIONAL EXAMINATIONS
General Certificate of Education Ordinary Level

COMBINED SCIENCE

5129/02

Paper 2

May/June 2003

2 hours 15 minutes

Candidates answer on the Question Paper.
No Additional Materials are required.

READ THESE INSTRUCTIONS FIRST

Write your Centre number, candidate number and name on all the work you hand in.
Write in dark blue or black pen in the spaces provided on the Question Paper.
You may use a soft pencil for any diagrams, graphs, tables or rough working.
Do not use staples, paper clips, highlighters, glue or correction fluid.

Answer **all** questions.
At the end of the examination, fasten all your work securely together.
The number of marks is given in brackets [] at the end of each question or part question.
A copy of the Periodic Table is printed on page 20.

If you have been given a label, look at the details. If any details are incorrect or missing, please fill in your correct details in the space given at the top of this page.

Stick your personal label here, if provided.

For Examiner's Use	
Total	

- 1 Fig. 1.1 represents the arrangement of atoms or molecules in four different substances **A**, **B**, **C** and **D**.

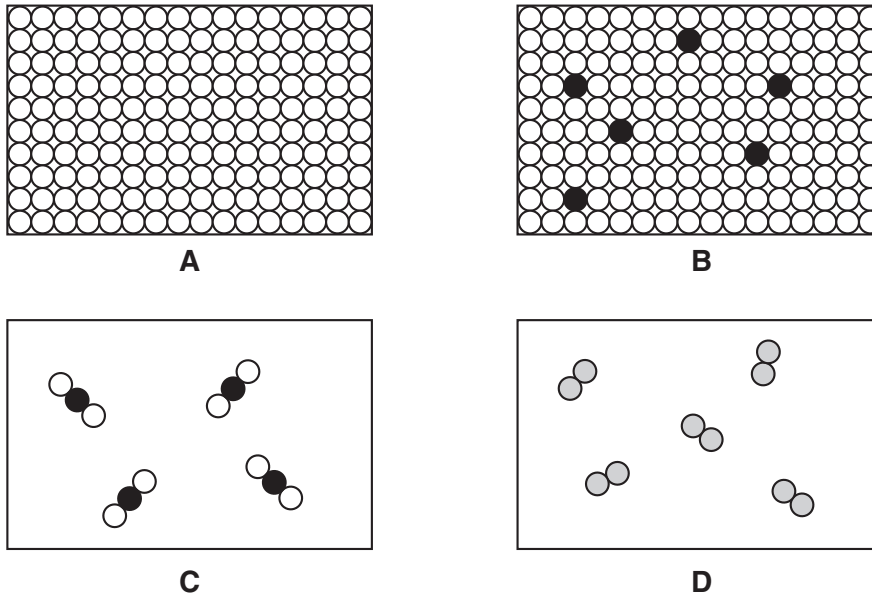


Fig. 1.1

- (a) Which substance is an alloy? [1]
- (b) Which substance is a compound? [1]
- (c) Which substances are elements? and [1]
- (d) Which substance could be carbon dioxide? [1]

- 2 A measuring cylinder contains 80 cm^3 of water and has a total mass of 300 g .

A stone is then lowered into the cylinder. The new reading of the volume is 110 cm^3 and the total mass is 390 g .

The readings are shown in Fig. 2.1.

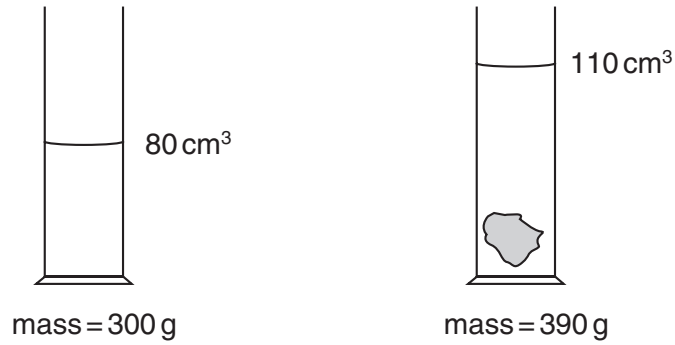


Fig. 2.1

- (a) What is the mass of the stone? g [1]
- (b) What is the volume of the stone? cm^3 [1]
- (c) Use your answers to (a) and (b) to calculate the density of the stone.

[3]

3 (a) Inspired air differs from expired air.

State three differences between inspired and expired air.

- 1.
- 2.
- 3. [3]

(b) Fig. 3.1 shows some apparatus for comparing inspired and expired air.

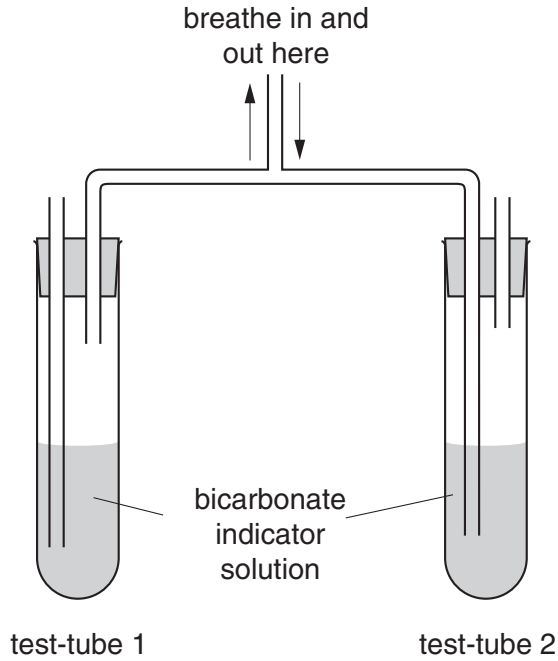


Fig. 3.1

Each test-tube contains bicarbonate indicator solution. In atmospheric air, bicarbonate indicator solution is red. In expired air it turns yellow. The reaction is reversible.

At the start of the experiment the bicarbonate indicator in both test-tubes is red. A person breathes in and out through the middle tube.

In which test-tube will the bicarbonate indicator solution go yellow?

..... [1]

(c) The yellow bicarbonate indicator solution is put into the apparatus in Fig. 3.2.

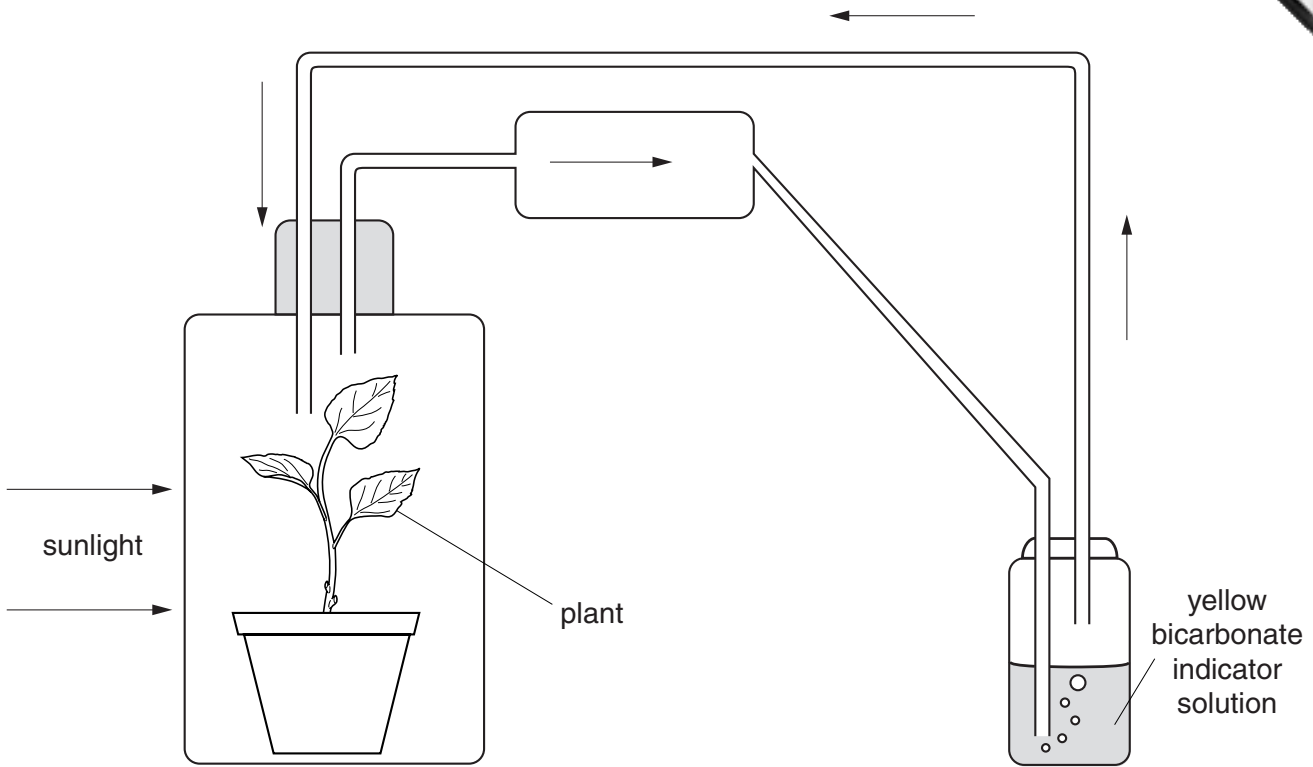


Fig. 3.2

The apparatus is left in sunlight for two hours. The yellow solution becomes red again.

(i) Suggest why the bicarbonate indicator changes colour.

.....
 [1]

(ii) Name the process in the plant that causes the colour change.

..... [1]

(iii) State the word equation for this process taking place in the plant.

.....
 [2]

- 4 A student investigated the reactivity of some metals. He placed small pieces of the copper, iron, magnesium and zinc in test-tubes containing the same volume of hydrochloric acid. The acid in each tube had the same concentration and initial temperature.

His observations are shown in Fig. 4.1.

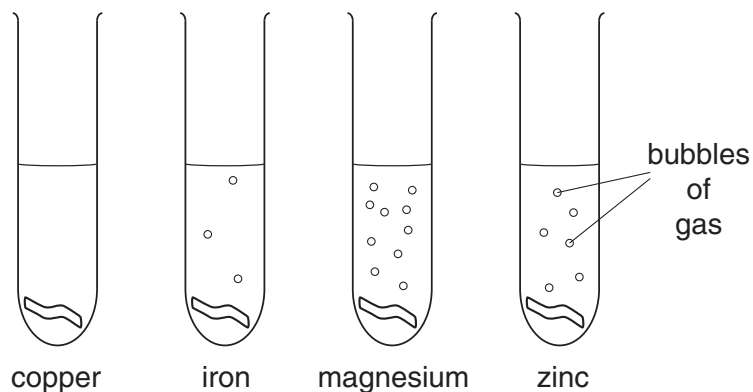


Fig. 4.1

- (a) Use his observations to list the metals in order of reactivity, the most reactive metal first.

1.

2.

3.

4.

[2]

- (b) Suggest why the hydrochloric acid should be the same concentration and temperature in each of the test-tubes.

..... [1]

- (c) (i) Name the gas given off when the metals react with hydrochloric acid.

.....

- (ii) State the test for this gas.

.....

.....

[2]

- (d) State the name and formula of the salt formed when zinc reacts with hydrochloric acid.

name formula

[2]

- 5 Fig. 5.1 shows how the displacement of particles in a wave varies with distance from source.

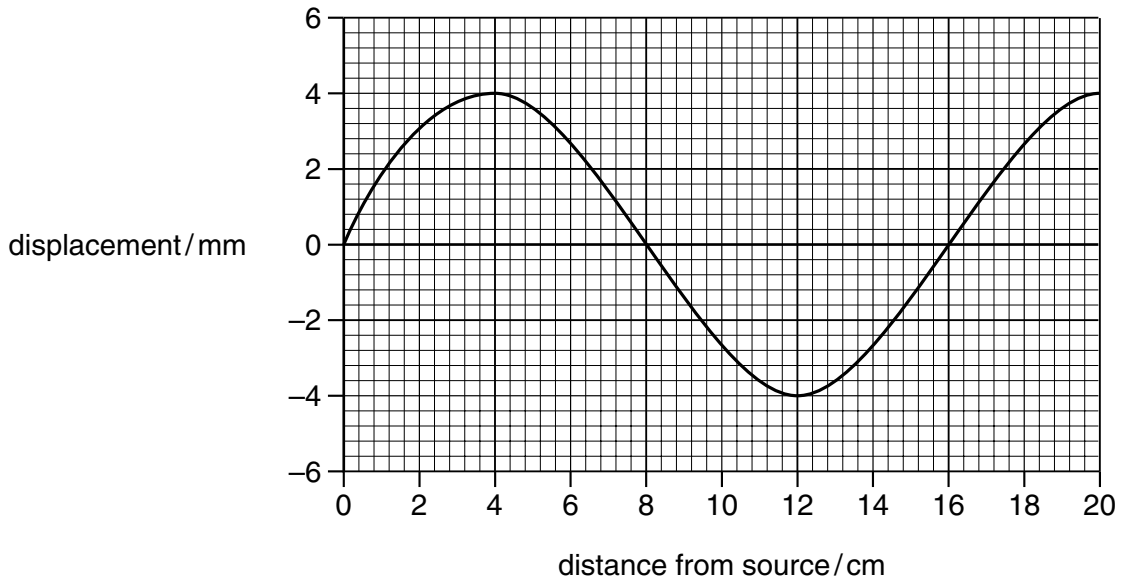


Fig. 5.1

- (a) Use Fig. 5.1 to determine

- (i) the wavelength,

..... cm [1]

- (ii) the amplitude.

..... mm [1]

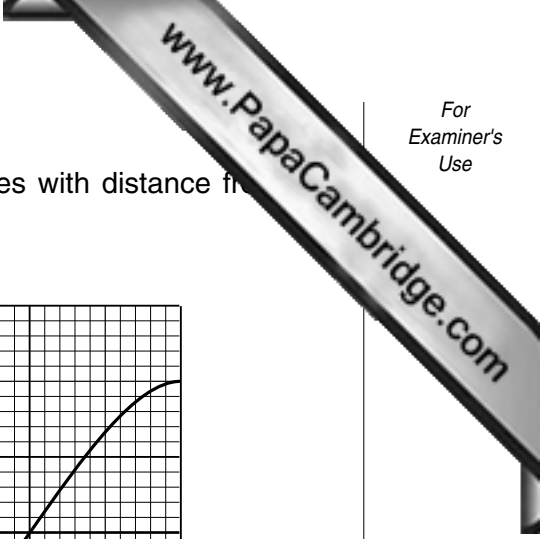
- (b) The wave shown in Fig. 5.1 has a frequency of 5.0 Hz.

- (i) State what is meant by *frequency*.

.....
..... [2]

- (ii) Use your answer to (a)(i) to calculate the speed of the wave.

[3]



6 (a) (i) State three different uses of energy within the body.

1. [3]
2.
3.

(ii) Suggest three ways in which energy can be lost from the body.

1. [3]
2.
3.

(b) The recommended daily energy intake for a man aged 45 is 12 100 kJ and for a 75 year old man is 8 800 kJ.

Suggest a reason for this difference in daily energy intake.

..... [1]

7 Sulphur dioxide is produced when coal is burnt in air. Sulphur dioxide causes acid rain.

(a) Write the symbol equation for the burning of sulphur in oxygen.

..... [1]

(b) When the sulphur dioxide dissolves in rain water what happens to the pH value of the rain water?

..... [1]

(c) State two environmental problems caused by acid rain.

1.
2. [2]

8 Fig. 8.1 shows an electric kettle. The heating element heats the water around it.

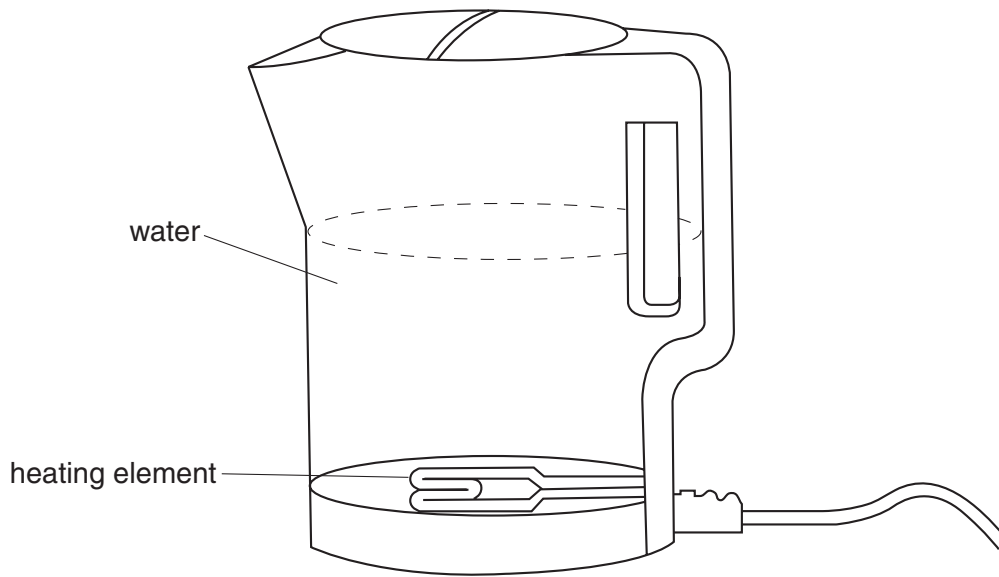


Fig. 8.1

(a) Explain, in detail, how the rest of the water in the kettle is heated by convection.

.....

 [3]

(b) Suggest two reasons why the body of the kettle is made of plastic rather than metal.

1.
 2. [2]

(c) The mains plug of the kettle has three connections. One of them is called the **live**. What are the names of the other two connections?

..... and [2]

(d) The mains supply is 230 V. The current in the heating element of the kettle is 8.0 A.

Calculate the resistance of the heating element.

9 Fig. 9.1 shows a section through part of a green leaf.

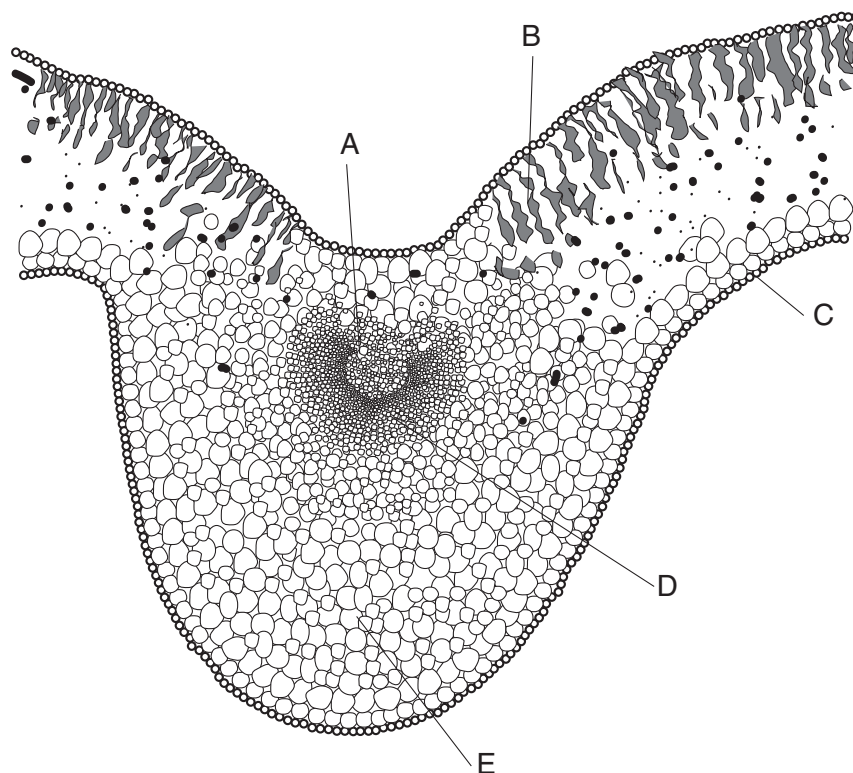


Fig. 9.1

(a) Name the tissue in which water is carried through the leaf.

..... [1]

(b) From Fig. 9.1 give

(i) the letter that identifies the tissue in (a), [1]

(ii) the letter that identifies tissue containing chlorophyll. [1]

(c) Name the process by which water is lost from the leaf.

..... [1]

10 Ethane and ethene are both hydrocarbons. They can be distinguished from each other using aqueous bromine solution.

(a) (i) State the colour of aqueous bromine solution.

.....

(ii) State what you would see when aqueous bromine solution is added to ethane and to ethene in separate test-tubes.

ethane

ethene

[3]

(b) Both hydrocarbons burn in oxygen. What are the products of complete combustion of the hydrocarbons?

..... and [2]

11 Fig. 11.1 shows a simple electric bell. When the switch is closed the metal ball hits the gong.

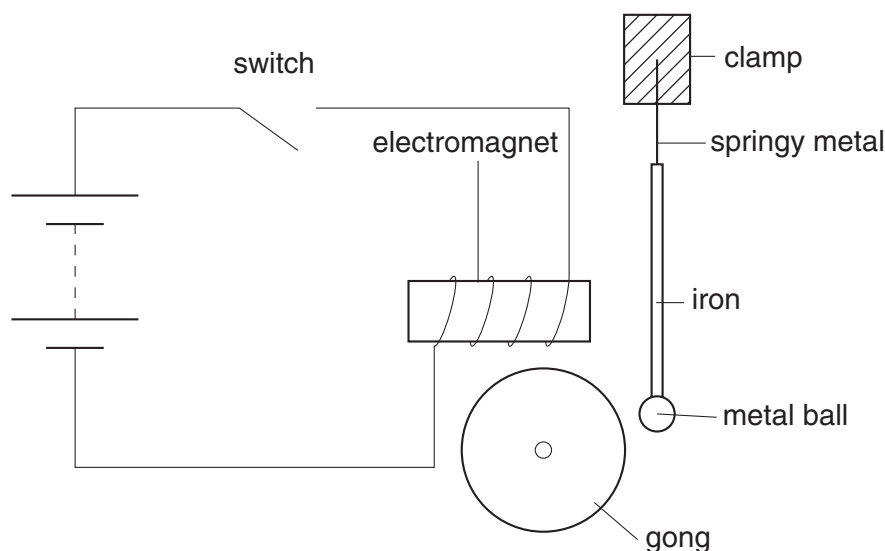


Fig. 11.1

(a) Explain why the metal ball moves when the switch is closed.

.....

 [3]

(b) What difference, if any, does it make if the cells are reversed?

..... [1]

(c) Complete the following sentence about the energy changes taking place in the cells.

The cells change energy into energy [2]

12 Fig. 12.1 shows a section through a flower.

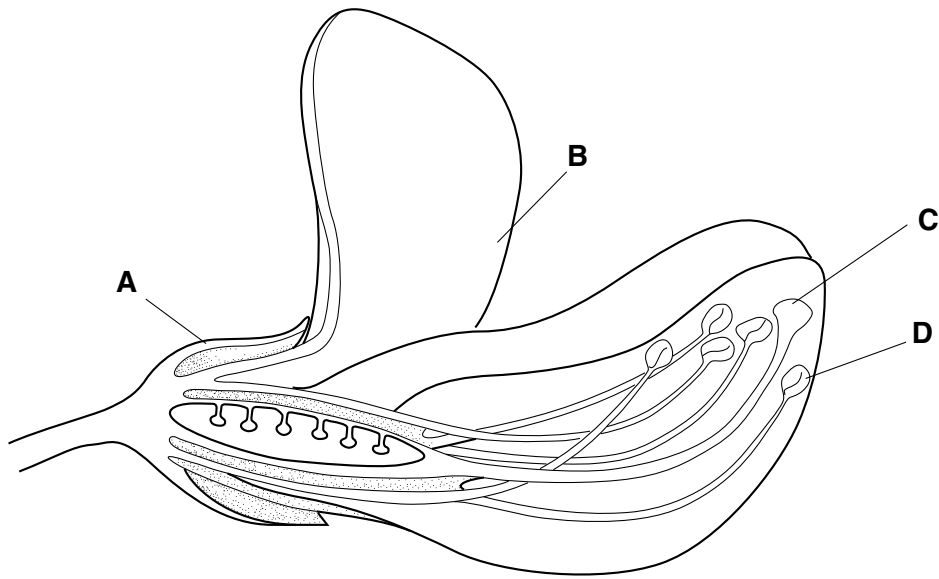


Fig. 12.1

(a) Suggest **one** use for each of the labelled parts.

A

B

C

D [4]

(b) On Fig. 12.1, mark with a cross (X) a place where fertilisation occurs. [1]

(c) After fertilisation, what do the ovule and the ovary become?

The ovule becomes a

The ovary becomes a [2]

- 13 (a) Ammonia contains nitrogen and hydrogen and is represented by the formula NH_3 .

Use the information from the Periodic Table to help you complete Fig. 13.1 to show the arrangement of the outer shell electrons in a molecule of ammonia.

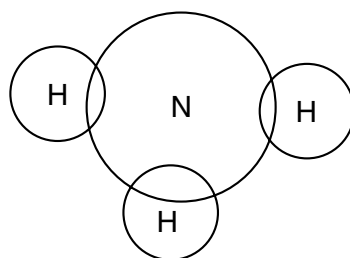


Fig. 13.1

[2]

- (b) (i) Name the type of bonding present in ammonia.

.....

[1]

- (ii) Explain, in terms of particles, why the boiling point of ammonia is -34°C .

.....

.....

..... [2]

14 Fig. 14.1 shows a bar magnet being pushed into a coil of wire to induce an e.m.f.

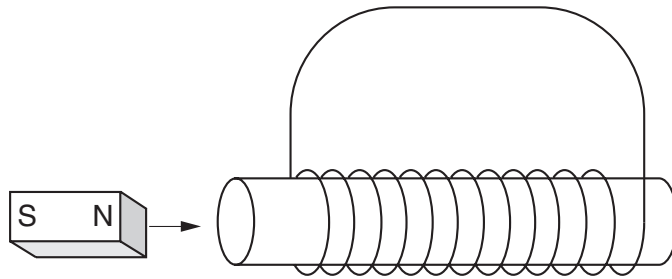


Fig. 14.1

(a) State three factors that affect the size of the induced e.m.f.

- 1.
- 2.
- 3. [3]

(b) The induced e.m.f. produces a current through the coil.

State two ways by which the current may be reversed.

- 1.
- 2. [2]

15 Fig. 15.1 shows some plant tissue.

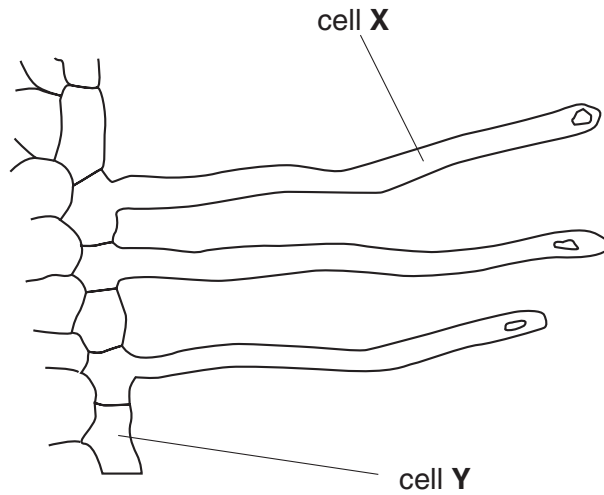


Fig. 15.1

(a) (i) Name the type of cell marked X.

..... [1]

(ii) Name the process by which water enters cell X.

..... [1]

(iii) Suggest why cell X is better at taking in water than cell Y.

.....
..... [1]

(b) Suggest four ways in which water is used in a plant.

1.
2.
3.
4. [4]

16 An element **X** exists as two isotopes ^{28}X and ^{30}X .

(a) What are *isotopes*?

.....
..... [2]

(b) Complete the following table.

isotope	number of protons	number of neutrons	number of electrons
^{28}X			14
^{30}X	14	16	

[3]

(c) How do the chemical properties of each isotope of the element compare with each other? Explain your answer.

.....
.....
..... [2]

(d) Use the Periodic Table to identify element **X**.

..... [1]

17 Ball **A** and ball **B** in Fig. 17.1 are both made of polythene.

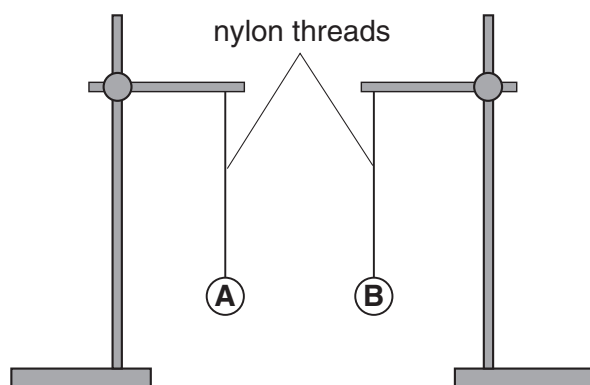


Fig. 17.1

- (a) A polythene ball, initially uncharged, can be given a negative charge by rubbing it with a duster.

What type of charge does the duster gain? [1]

- (b) Fig. 17.2 shows the two balls after they have each been given a negative charge.

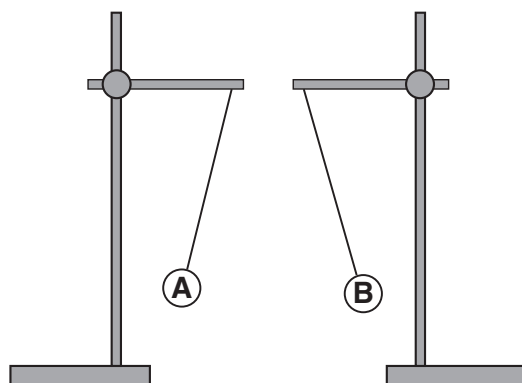


Fig. 17.2

Explain why the two balls do not hang vertically.

..... [1]

DATA SHEET
The Periodic Table of the Elements
Group

I	II	III	IV	V	VI	VII	0	
7 Li Lithium	9 Be Beryllium	1 H Hydrogen		11 B Boron	12 C Carbon	14 N Nitrogen	16 O Oxygen	18 Ne Neon
23 Na Sodium	24 Mg Magnesium	27 Fe Iron		29 Cu Copper	30 Zn Zinc	31 P Phosphorus	32 S Sulphur	36 Ar Argon
39 K Potassium	40 Ca Calcium	45 Sc Scandium	48 Ti Titanium	59 Co Cobalt	59 Ni Nickel	75 As Arsenic	79 Se Selenium	84 Kr Krypton
85 Rb Rubidium	88 Sr Strontium	89 Y Yttrium	91 Zr Zirconium	103 Rh Rhodium	106 Pd Palladium	122 Sb Antimony	128 Te Tellurium	131 Xe Xenon
133 Cs Caesium	137 Ba Barium	139 La Lanthanum	178 Hf Hafnium	192 Ir Iridium	195 Pt Platinum	209 Pb Lead	207 Po Polonium	86 Rn Radon
Fr Francium	226 Ra Radium	227 Ac Actinium						
				159 Tb Terbium	157 Gd Gadolinium	167 Er Erbium	169 Tm Thulium	175 Lu Lutetium
				162 Dy Dysprosium	162 Dy Dysprosium	68 Fm Fermium	101 Md Mendelevium	102 No Nobelium
				65 Bk Berkelium	96 Cm Curium	99 Es Einsteinium	101 Md Mendelevium	102 No Nobelium
				97 Bk Berkelium	95 Am Americium	99 Es Einsteinium	101 Md Mendelevium	102 No Nobelium
				94 Pu Plutonium	95 Am Americium	99 Es Einsteinium	101 Md Mendelevium	102 No Nobelium
				92 U Uranium	93 Np Neptunium	99 Es Einsteinium	101 Md Mendelevium	102 No Nobelium
				91 Pa Protactinium	94 Pu Plutonium	99 Es Einsteinium	101 Md Mendelevium	102 No Nobelium
				90 Th Thorium	91 Pa Protactinium	99 Es Einsteinium	101 Md Mendelevium	102 No Nobelium
				89 Pr Praseodymium	90 Th Thorium	99 Es Einsteinium	101 Md Mendelevium	102 No Nobelium
				89 Pr Praseodymium	90 Th Thorium	99 Es Einsteinium	101 Md Mendelevium	102 No Nobelium
				89 Pr Praseodymium	90 Th Thorium	99 Es Einsteinium	101 Md Mendelevium	102 No Nobelium

3-71 Lanthanoid series
 0-103 Actinoid series

a = relative atomic mass
 X = atomic symbol
 b = proton (atomic) number

The volume of one mole of any gas is 24 dm³ at room temperature and pressure (r.t.p.).