



UNIVERSITY OF CAMBRIDGE INTERNATIONAL EXAMINATIONS  
General Certificate of Education Ordinary Level

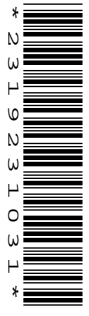
CANDIDATE  
NAME

CENTRE  
NUMBER

--	--	--	--	--	--

CANDIDATE  
NUMBER

--	--	--	--	--



**COMBINED SCIENCE**

**5129/02**

Paper 2

**May/June 2008**

**2 hours 15 minutes**

Candidates answer on the Question Paper.

No Additional Materials are required.

**READ THESE INSTRUCTIONS FIRST**

Write your Centre number, candidate number and name on all the work you hand in.

Write in dark blue or black pen.

You may use a soft pencil for any diagrams, graphs or rough working.

Do not use staples, paper clips, highlighters, glue or correction fluid.

**DO NOT WRITE IN ANY BARCODES.**

Answer **all** questions.

A copy of the Periodic Table is printed on page 20.

At the end of the examination, fasten all your work securely together.

The number of marks is given in brackets [ ] at the end of each question or part question.

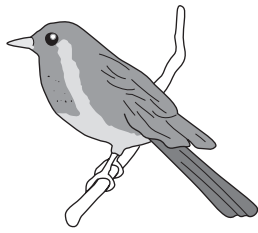
**For Examiner's Use**

--

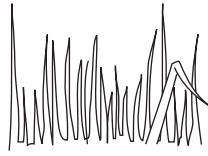
This document consists of **19** printed pages and **1** blank page.



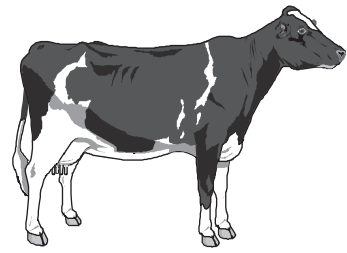
1 Fig. 1.1 shows some organisms in an ecosystem. They are not drawn to the same scale.



*small bird*



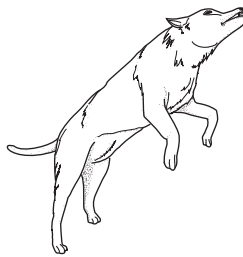
*grass*



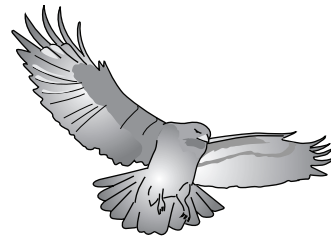
*cow*



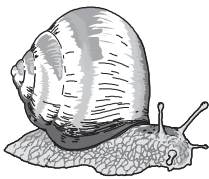
*flower*



*wild dog*



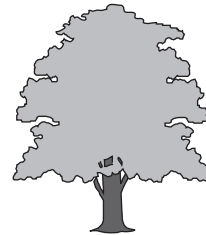
*hawk*



*snail*



*rabbit*



*tree*

**Fig. 1.1**

(a) From Fig. 1.1 name

(i) a producer,

.....[1]

(ii) a herbivore.

.....[1]

(b) Choose organisms from Fig. 1.1 to complete this food chain.

1		2		3		4
grass	→		→	small bird	→	

[2]

(c) State the energy source for the food chain.

.....[1]

(d) State the essential type of organism **not** shown in the ecosystem.

.....[1]

(e) Suggest why a food chain rarely has more than five stages.

.....  
 .....  
 .....[2]

2 The following is a list of metals.

aluminium          copper          iron  
 magnesium        potassium      zinc

Complete the sentences by choosing metals from the list.  
 Each metal may be used once, more than once or not at all.

(a) ..... is used for electrical wiring in houses. [1]

(b) ..... reacts vigorously with water producing hydrogen. [1]

(c) ..... is extracted from haematite. [1]

(d) ..... does not react with dilute sulphuric acid. [1]

(e) ..... is used to galvanise iron to prevent it from rusting. [1]

- 3 Fig. 3.1 shows two resistors, **A** and **B**, connected in series. The resistance of **A** is  $7.0\ \Omega$ . The ammeter reads  $0.20\ \text{A}$ .

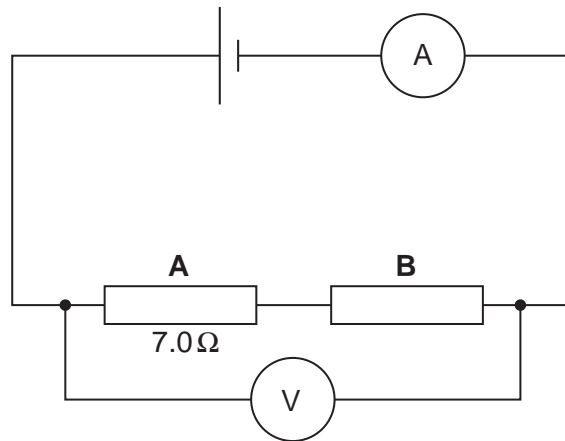


Fig. 3.1

(a) Calculate

- (i) the charge that passes through resistor **A** in 3.0 minutes,

charge = ..... C [2]

- (ii) the potential difference across resistor **A**.

potential difference = ..... V [2]

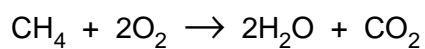
(b) The voltmeter reads  $2.0\ \text{V}$ .

Calculate the potential difference across resistor **B**.

potential difference = ..... V [1]

- 4 Methane is the main constituent of natural gas.  
Methane burns in excess oxygen to form carbon dioxide and water.

The equation for the reaction is



- (a) Describe a test to show that carbon dioxide is produced.

test .....

result ..... [2]

- (b) (i) Calculate the relative molecular mass of

methane, .....

carbon dioxide. .... [2]

( $A_r$ : C, 12; H, 1; O, 16.)

- (ii) Calculate the mass of carbon dioxide produced by burning 4g of methane.

mass = ..... g [2]

- 5 Pieces of blue cobalt chloride paper are placed on the upper and lower surfaces of a plant leaf. They are held in place by glass slides as shown in Fig. 5.1.

The plant is watered normally.

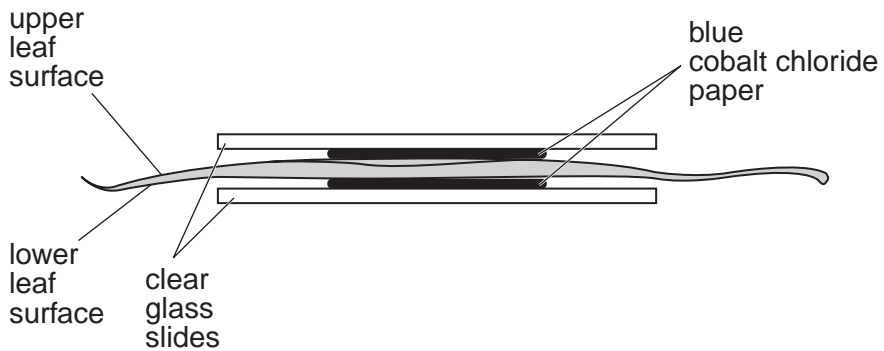


Fig. 5.1

Cobalt chloride paper is blue when dry and pink when it absorbs water.

- (a) Complete the table to show the colour of each piece of cobalt chloride paper after one hour.

	upper surface	lower surface
start	blue	blue
after one hour		

[1]

- (b) (i) Name the process by which water is lost from the leaf.

.....[1]

- (ii) State two ways in which the upper surface of a leaf differs from the lower surface, causing a difference in the rate of water loss.

1. ....

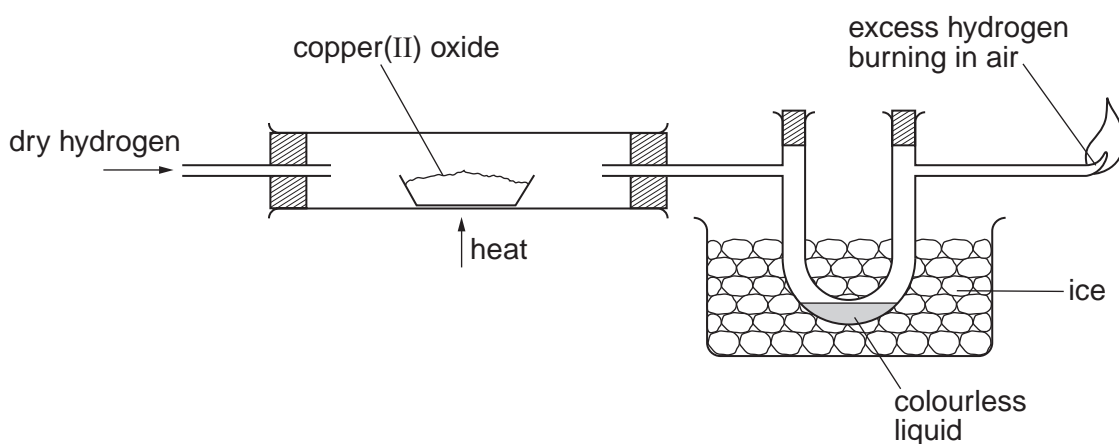
2. ....[2]

- (c) Name the cells through which most water enters a plant and also the process involved.

name of cells .....

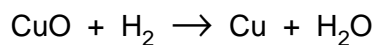
process .....[2]

- 6 Fig. 6.1 shows apparatus used to investigate the reaction between copper(II) oxide and hydrogen.



**Fig. 6.1**

The equation for the reaction is



- (a) What type of reaction does the copper(II) oxide undergo?

.....[1]

- (b) State two properties that show that copper is a metal.

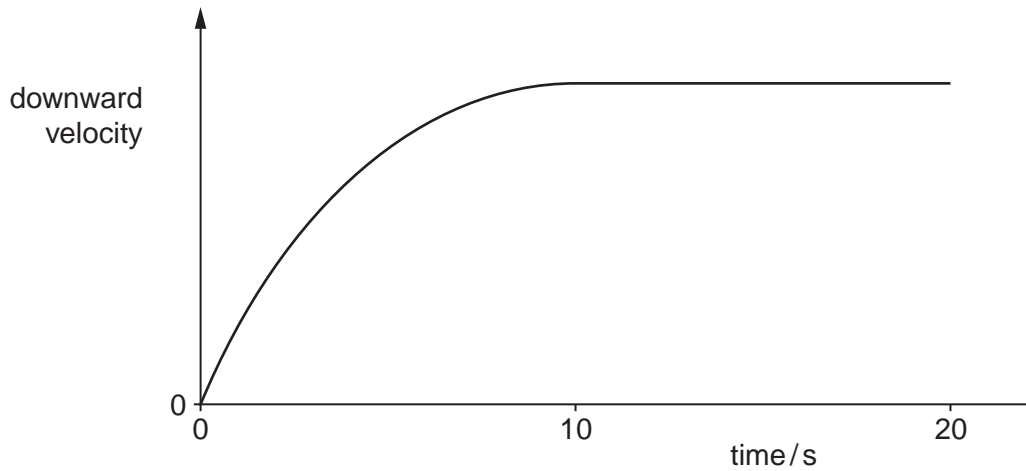
property 1 .....

property 2 .....[2]

- (c) Suggest a test to prove that the colourless liquid is **pure** water.

.....  
 .....[1]

- 7 A free-fall parachutist jumps out of an aircraft. Fig. 7.1 shows how his **downward** velocity changes with time.



**Fig. 7.1**

- (a) Name

(i) the downward force acting on the parachutist, .....[1]

(ii) the form of energy lost by the parachutist as he falls. ....[1]

- (b) The parachutist accelerates during the first 10 seconds.

Explain how Fig. 7.1 shows that the acceleration is **not** constant.

.....  
 .....[1]

- (c) The parachutist has a mass of 80 kg. At one point during his descent, the net downward force on him is 300 N.

Calculate his acceleration.

acceleration = ..... [3]



8 Fig. 8.1 shows two similar metal cans.

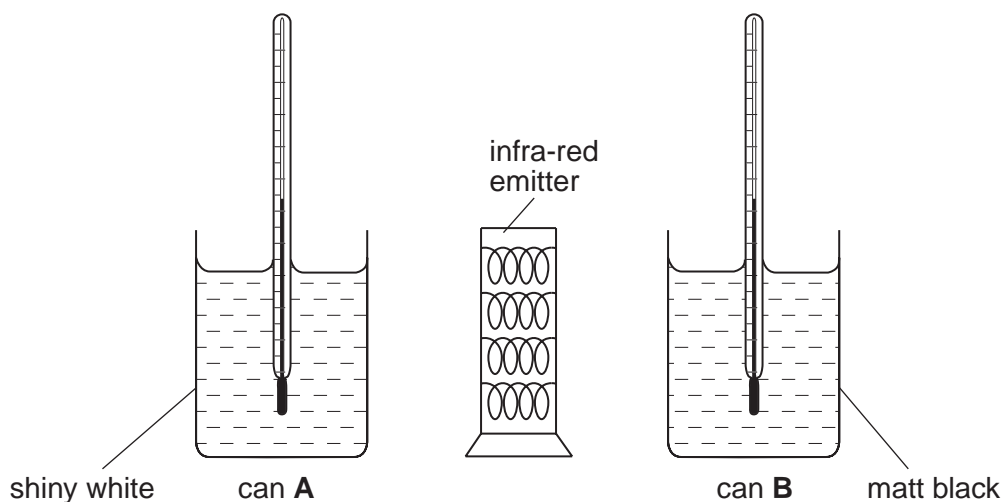


Fig. 8.1

Can **A** has a shiny white surface and can **B** has a matt black surface. Both cans contain equal masses of cold water at the same initial temperature. The cans are placed equal distances from a heater that emits infra-red radiation.

(a) Explain why the temperature of the water begins to rise more quickly in can **B** than in can **A**.

.....  
 .....[1]

(b) As the water in the cans is heated, the volume of the water increases.

State the change, if any, that occurs in

(i) its mass, .....[1]

(ii) its density. ....[1]

(c) Infra-red radiation is one component of the electromagnetic spectrum.

Name **two** other components of the electromagnetic spectrum that have longer wavelengths than infra-red radiation.

..... and .....[2]

9 (a) Explain **two** ways in which chewing aids the process of digestion.

1. ....  
 .....  
 2. ....  
 ..... [2]

(b) Describe the function of the salivary glands in the process of digestion.

- .....  
 .....  
 ..... [2]

(c) Complete the following sentences about dental hygiene.

- When ..... grow between teeth, they produce acid.  
 This acid attacks the teeth causing ..... [2]

10 Hydrochloric acid,  $\text{HCl}$ , and sulphuric acid,  $\text{H}_2\text{SO}_4$ , are strong acids.  
 Ethanoic acid,  $\text{CH}_3\text{CO}_2\text{H}$ , is a weak acid.

(a) State the name of the ion that causes acidity. .... [1]

(b) State the colour of the solution obtained when Universal Indicator is added to a solution of

- (i) hydrochloric acid, ..... [1]  
 (ii) ethanoic acid. .... [1]

(c) Acids react with alkalis to form salts.

Magnesium sulphate is prepared by reacting magnesium metal with sulphuric acid.  
 Hydrogen is also produced in the reaction.

(i) Write the equation for the reaction between magnesium and sulphuric acid.  
 ..... [1]

(ii) Suggest the names of **two** other substances that produce magnesium sulphate  
 when they are added to sulphuric acid.

..... and ..... [2]

- 11 Fig. 11.1 shows paint droplets sprayed from a paint gun.

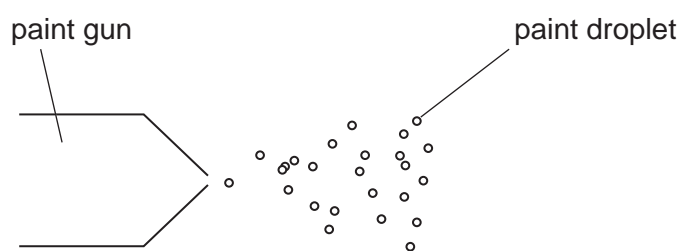


Fig. 11.1

Each droplet has a negative charge.

- (a) Explain why the paint droplets move away from each other.

.....  
 .....[1]

- (b) The paint droplets are attracted to a metal surface.

State whether the surface is uncharged, positively charged or negatively charged.

.....[1]

- 12 Fig. 12.1 lists some quantities that may be measured in physics experiments.

quantity measured	unit
frequency of a wave	
period of a pendulum	

Fig. 12.1

Complete the table by writing down the units in which each quantity could be measured. [2]

- 13 (a) The electronic structures of nitrogen and hydrogen are shown in Fig. 13.1.

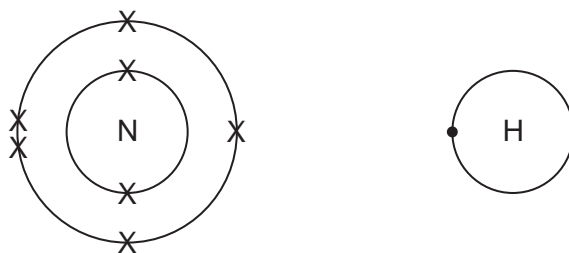


Fig. 13.1

Construct a dot and cross diagram to show the electronic arrangement in a molecule of ammonia.

[2]

- (b) Ammonia is manufactured from nitrogen and hydrogen using the Haber process. State the essential conditions for the Haber process.

temperature .....

°C

pressure .....

atm

catalyst .....

[3]

- (c) Ammonia is used to make the fertiliser ammonium sulphate. This contains nitrogen which is essential for the growth of plants. State the names of two **other** elements essential for the growth of plants.

..... and ..... [2]

14 (a) Describe what is meant by the term *famine*.

.....  
.....[1]

(b) State and explain two ways by which famine may be caused.

1. ....  
.....  
.....  
.....  
2. ....  
.....  
.....[4]

15 (a) Complete Fig. 15.1 to show how the voltage output of a simple a.c. generator changes with time. Show the voltage change for **two** complete rotations of the coil.

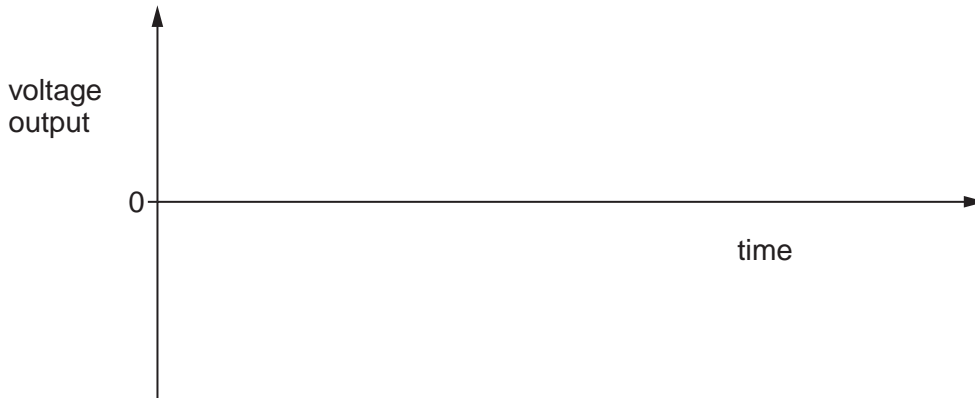


Fig. 15.1

[3]

(b) State **one** way by which the maximum voltage output of an a.c. generator could be increased.

.....[1]

- 16 A uniform metre rule is placed on a knife edge so that it balances horizontally. A soft-iron rod of weight 0.10 N is hung at the 20 cm mark. The rule is balanced by placing a lead disc at the 70 cm mark, as shown in Fig. 16.1.

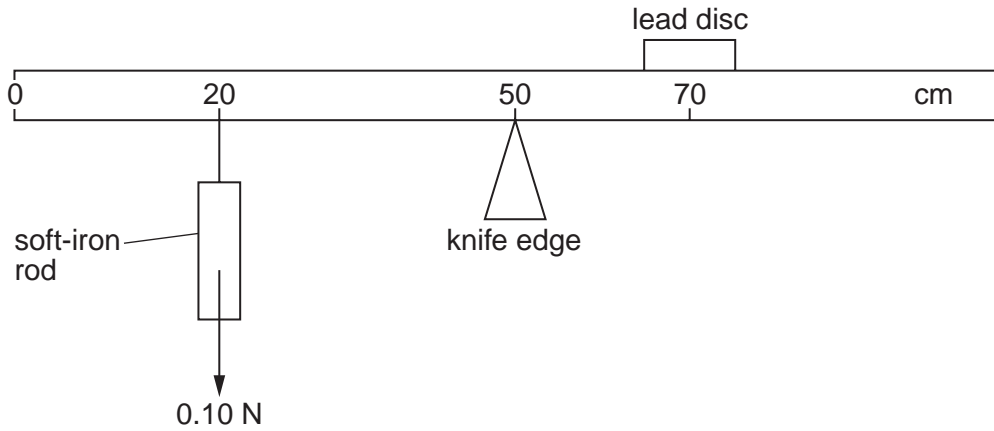


Fig. 16.1

- (a) Calculate the weight of the lead disc.

weight = ..... N [2]

- (b) A magnet is held under the soft-iron rod.

Explain what will happen to the balanced metre rule.

.....  
 .....  
 .....[2]



17 The electronic structure of aluminium is shown in Fig. 17.1.

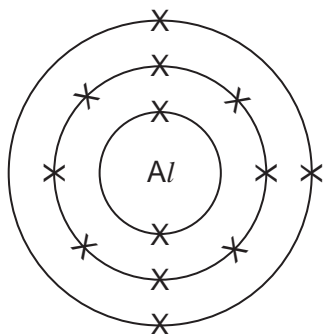


Fig. 17.1

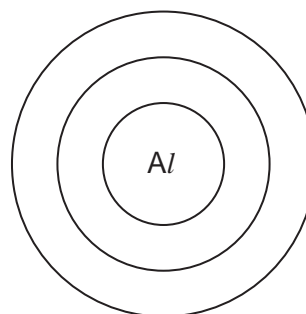


Fig. 17.2

(a) (i) Complete Fig. 17.2 to show the electronic structure of an aluminium ion. [1]

(ii) State the charge on the aluminium ion. ....[1]

(b) Using the electronic structure and the Periodic Table, explain why aluminium is a metal.

.....  
 .....  
 .....[2]

(c) Aluminium is used to make food containers because it is resistant to corrosion.

Explain why aluminium is resistant to corrosion.

.....  
 .....[2]

18 Fig. 18.1 shows a germinating seed.

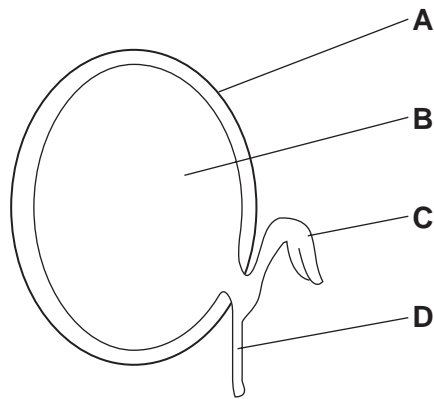


Fig. 18.1

(a) Name the parts labelled in Fig. 18.1.

A .....

B .....

C .....

D .....

[4]

(b) State three conditions that affect the germination of seeds.

1. ....

2. ....

3. ....[3]



- 19 Fig. 19.1 shows a measuring cylinder that contains some water.  
 Fig. 19.2 shows the same measuring cylinder with 50 metal spheres added.

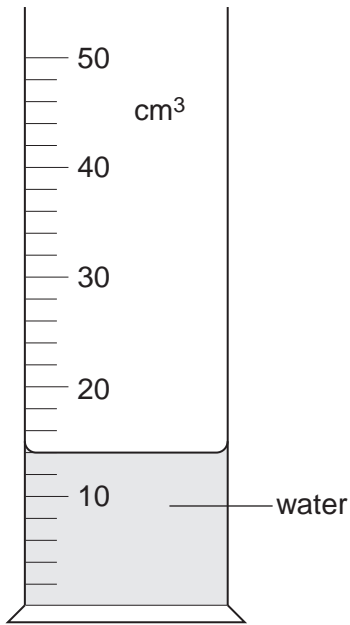


Fig. 19.1

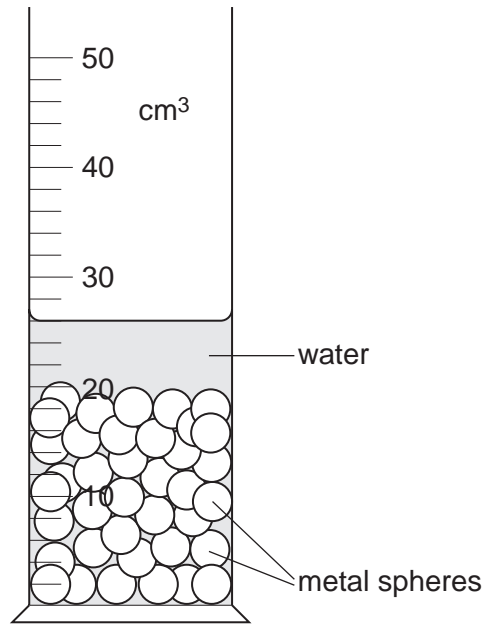


Fig. 19.2

Calculate

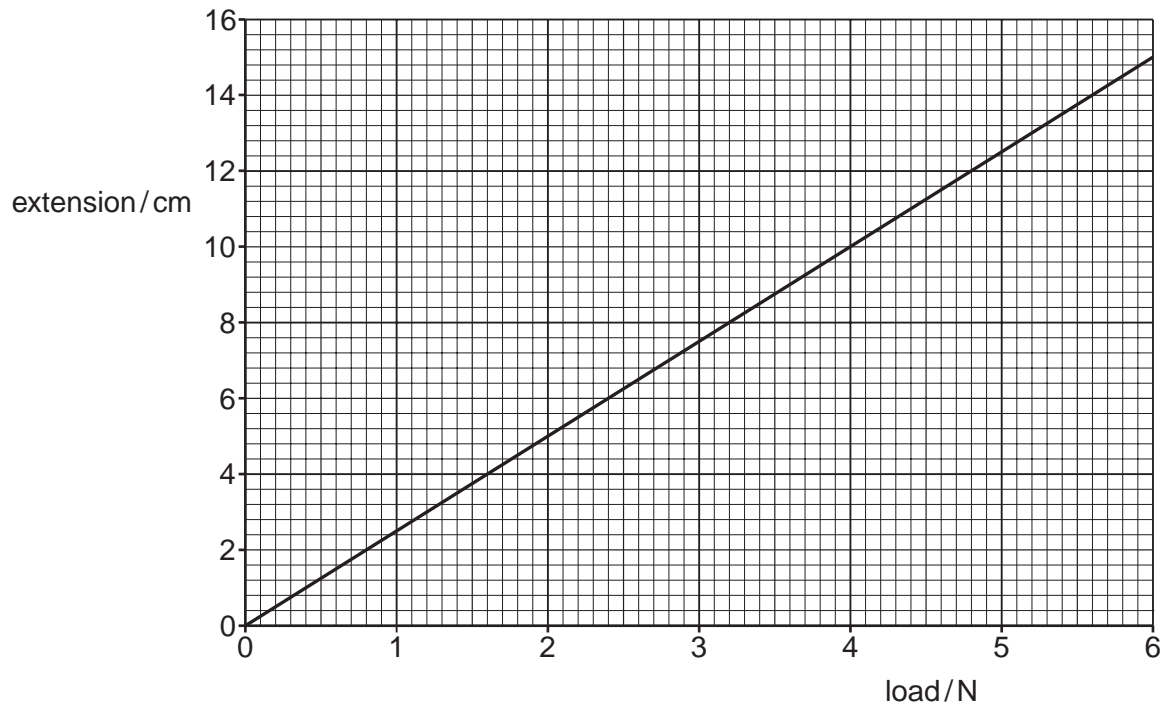
- (a) the volume of the 50 metal spheres,

volume = ..... cm<sup>3</sup> [2]

- (b) the volume of a single metal sphere.

volume = ..... cm<sup>3</sup> [1]

20 Fig. 20.1 shows an extension-load graph for a spring.



**Fig. 20.1**

(a) What is the extension for a load of 2.0 N?

..... cm [1]

(b) The length of the spring with no load is 20 cm.

What load gives the spring a total length of 30 cm?

load = ..... N [2]

---

Permission to reproduce items where third-party owned material protected by copyright is included has been sought and cleared where possible. Every reasonable effort has been made by the publisher (UCLES) to trace copyright holders, but if any items requiring clearance have unwittingly been included, the publisher will be pleased to make amends at the earliest possible opportunity.

University of Cambridge International Examinations is part of the Cambridge Assessment Group. Cambridge Assessment is the brand name of University of Cambridge Local Examinations Syndicate (UCLES), which is itself a department of the University of Cambridge.

