



# Cambridge International AS & A Level

---

**GEOGRAPHY**

**9696/13**

Paper 1 Core Physical Geography

**October/November 2024**

INSERT

**1 hour 30 minutes**

---

**INFORMATION**

- This insert contains all the resources referred to in the questions.
- You may annotate this insert and use the blank spaces for planning. **Do not write your answers** on the insert.

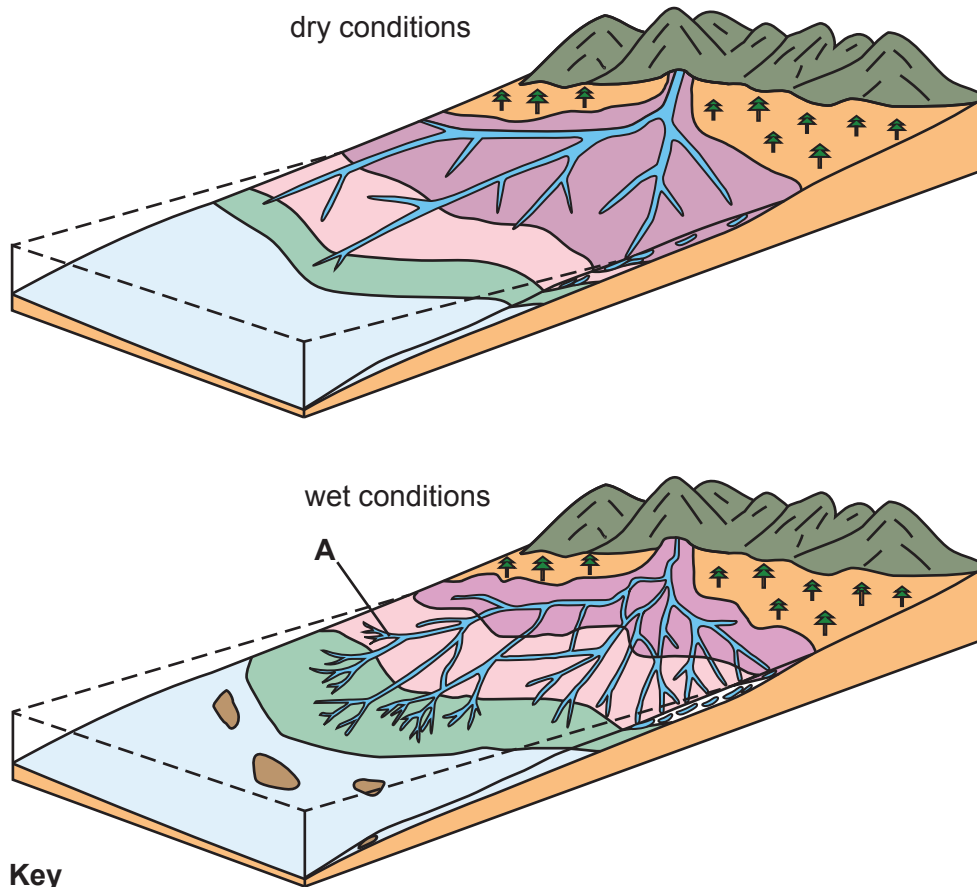


---

This document has **4** pages.

Fig. 1.1 for Question 1

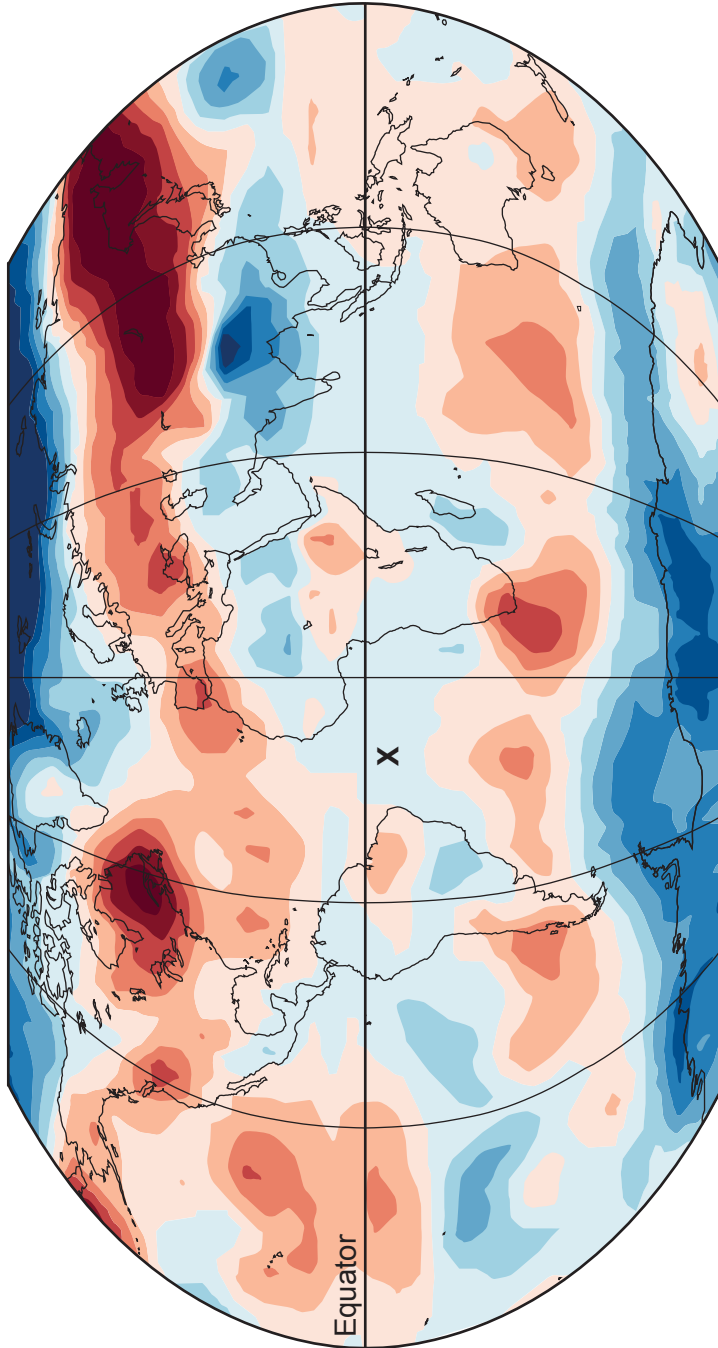
A diagram of a delta in a lake under two climatic conditions



- Key**
- delta plain
  - inner delta front
  - outer delta front
  - prodelta
  - deposited fine-grained material
  - ↑ flood plain
  - maximum water level

Fig. 2.1 for Question 2

Changes in the difference between summer and winter temperatures, 1979–2016



**Key**

change in the difference between summer and winter temperatures (°C/decade)

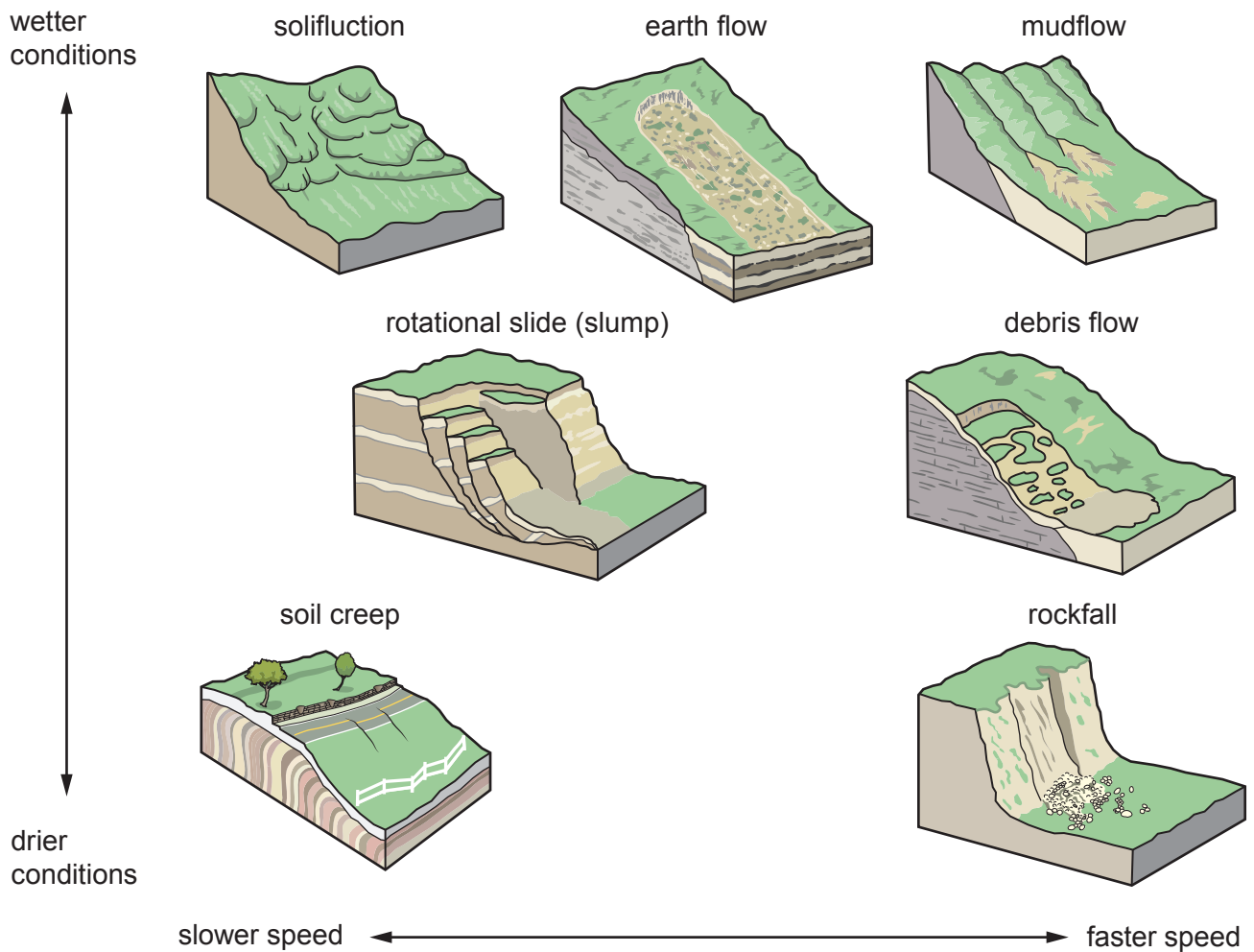


less difference

greater difference

Fig. 3.1 for Question 3

## Models of different types of mass movements



The boundaries and names shown, the designations used and the presentation of material on any maps contained in this question paper/insert do not imply official endorsement or acceptance by Cambridge Assessment International Education concerning the legal status of any country, territory, or area or any of its authorities, or of the delimitation of its frontiers or boundaries.

Permission to reproduce items where third-party owned material protected by copyright is included has been sought and cleared where possible. Every reasonable effort has been made by the publisher (UCLES) to trace copyright holders, but if any items requiring clearance have unwittingly been included, the publisher will be pleased to make amends at the earliest possible opportunity.

To avoid the issue of disclosure of answer-related information to candidates, all copyright acknowledgements are reproduced online in the Cambridge Assessment International Education Copyright Acknowledgements Booklet. This is produced for each series of examinations and is freely available to download at [www.cambridgeinternational.org](http://www.cambridgeinternational.org) after the live examination series.

Cambridge Assessment International Education is part of Cambridge Assessment. Cambridge Assessment is the brand name of the University of Cambridge Local Examinations Syndicate (UCLES), which is a department of the University of Cambridge.