



UNIVERSITY OF CAMBRIDGE INTERNATIONAL EXAMINATIONS
General Certificate of Education Ordinary Level



FASHION AND FABRICS

6050/02

Paper 2 Practical Test

October/November 2009

2 hours 30 minutes

Additional Materials:

Sewing equipment
Fabric
Pattern
Interfacing
Scissors

Sewing thread to match fabric
Tacking thread
Pencil
Ruler



This document consists of **5** printed pages and **3** blank pages.



Materials provided

- (a) Butterick pattern **3396**, size **8-10-12**.
An illustration of the shorts, **view A**, is on the envelope containing the pattern.
- (b) A piece of fabric 115 cm wide and 44 cm long.
- (c) A piece of iron-on interfacing 12 cm wide and 38 cm long.
- (d) Sewing thread to match the fabric.
- (e) Tacking thread.

For this test you are to prepare the pattern and make up the right half of the shortened shorts, **size 12**, omitting the belt carriers.

Before you begin, you should study the question paper carefully, together with the illustration, the pattern and the fabric.

This is a multi-size pattern. The cutting line for **size 12** is shown by **the outer black solid line**.

A seam allowance of 1.5 cm is allowed within the pattern although it is not marked.

THE LABEL

<p>Candidate's name</p> <p>.....</p> <p>Centre No./Candidate No.</p> <p>..... /</p>

The Test**1 Preparation**

- (a) Write your name and candidate number on the envelope provided.
- (b) Select and separate pattern pieces 1, 2, 3 and 5 for the shorts **View A**.
- (c) On pattern piece 2, the back shorts, measure 10 cm down from the lengthen and shorten line (above the crotch line), draw a line across and cut the bottom off along this line and keep the pattern piece labelled 2.
- (d) On pattern piece 1, the front shorts, measure 10 cm down from the lengthen and shorten line, draw a line across and cut the bottom off along this line and keep the pattern piece labelled 1.
- (e) On pattern piece 5, the waistband, cut through the centre back line and keep the pattern piece labelled 5.

2 Cutting out

- (a) Place the pattern pieces on the fabric as shown in the layout. For the purpose of this test, place pattern piece 5 to the selvedge.
- (b) Cut out the right half of the shortened shorts.
- (c) Transfer the pattern markings which are needed for making up the test.
- (d) Cut out the interfacing as shown in the layout.

3 Making up

It is important that pressing is done at all stages.

Make up the right half of the shortened shorts.

(a) Pleat

- (i) Fold the pleat in position on the front.
- (ii) Tack the pleat in position.

(b) Dart

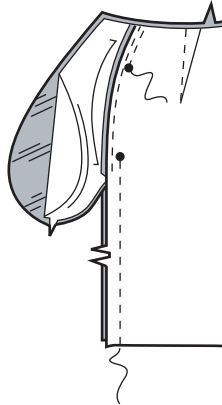
- (i) Work the dart on the back shorts.
- (ii) Secure the ends of the machine stitching at the point by hand.

(c) Pocket

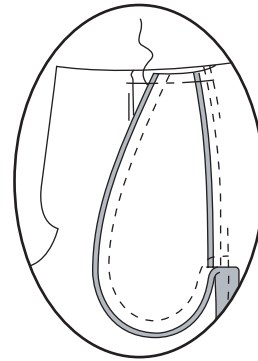
- (i) Attach one pocket section to the front shorts matching the notch. Machine stitch a 6 mm seam.
- (ii) Press the seam towards the pocket.
- (iii) Attach one pocket section to the back shorts matching the notch. Machine stitch a 6 mm seam.
- (iv) Press the seam towards the pocket.

(d) Side seam and pocket

- (i) Stitch the front and back together at the side seam leaving the pocket open between large ●s. See diagram.



- (ii) Stitch the pocket edges together to the side seam.
 (iii) Clip the back seam allowance below the pocket.



- (iv) Neaten the seam.
 (v) Turn the pocket towards the front along the seam line; press.
 (vi) Tack the upper edge in place.

(e) Waistband

- (i) Fuse the interfacing to the wrong side of the waistband.
 (ii) Turn in the seam allowance on the unnotched edge of the waistband. Press.

(f) Front Opening

On the front shorts turn the front extension (opening) to the inside along the Centre Front fold line and tack in place. **Do not** remove this tacking at the end of the test.

(g) Attaching the waistband

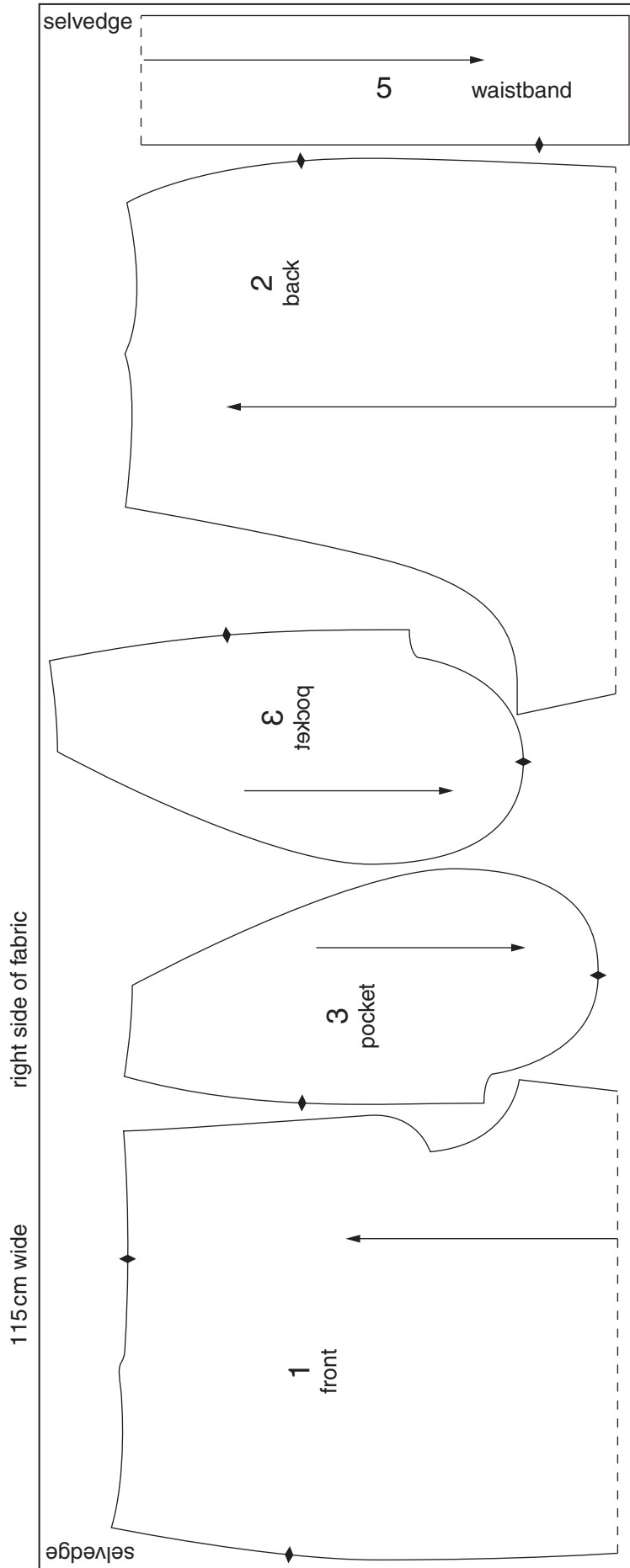
- (i) On the back shorts turn the centre back seam allowance to the inside and tack in place.
 (ii) Attach the waistband to the upper edge of the shorts matching the notch and the balance marks.
 (iii) Work the Centre Front seam of the waistband. Trim. Turn right side out.
 (iv) Secure the inside of the waistband with a suitable hand sewn stitch.

(h) Inner leg seam

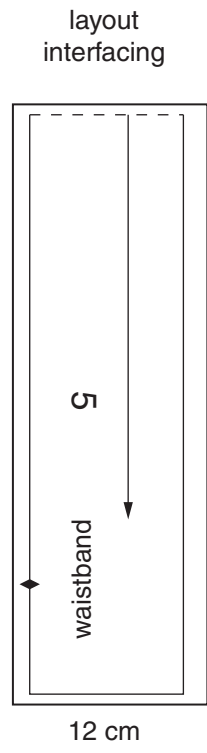
- (i) Join the front to the back at the inner leg seam.
 (ii) **Do not** neaten or trim this seam.

At the end of the examination remove the needle and unnecessary pins from your work. Write your name and candidate number on the label provided. Cut out the label and tack it to your test. The label should not cover any stitching and should be on **single** fabric. Press your work, fold it carefully and place it in the envelope provided. Do not include the scraps of fabric you have left over.

5



for the purpose of this test place piece 5 to the selvedge



Permission to reproduce items where third-party owned material protected by copyright is included has been sought and cleared where possible. Every reasonable effort has been made by the publisher (UCLES) to trace copyright holders, but if any items requiring clearance have unwittingly been included, the publisher will be pleased to make amends at the earliest possible opportunity.

University of Cambridge International Examinations is part of the Cambridge Assessment Group. Cambridge Assessment is the brand name of University of Cambridge Local Examinations Syndicate (UCLES), which is itself a department of the University of Cambridge.