



UNIVERSITY OF CAMBRIDGE INTERNATIONAL EXAMINATIONS
 General Certificate of Education
 Ordinary Level

CANDIDATE NAME

CENTRE NUMBER

CANDIDATE NUMBER



FASHION AND FABRICS **6050/01**
 Paper 1 Theory **October/November 2011**
2 hours

Candidates answer Section A on the Question Paper.
 Additional Materials: Answer Booklet/Paper
 Coloured pencils (not yellow)
 Ruler
 Small piece of fabric, needle and thread

READ THESE INSTRUCTIONS FIRST

Write your Centre number, candidate number and name on all the work you hand in.
 Write in dark blue or black pen.
 You may use a soft pencil for any diagrams or rough working.
 Do not use staples, paper clips, highlighters, glue or correction fluid.
DO NOT WRITE IN ANY BARCODES.
 The Insert is for use with Questions 1, 4 and 7.
 You should illustrate your answers by means of clear, bold diagrams wherever possible.
 You may use a needle and thread and a small piece of fabric to help in making drawings of stitches.
 This fabric should **not** be handed in with your work.

Section A

Answer **all** parts of Question 1 in the spaces provided on the Question Paper.
 You are advised to spend no longer than 40 minutes on Section A.

Section B

Answer any **three** questions.
 Write your answers on the separate Answer Booklet/Paper provided.
 Enter the numbers of the **Section B** questions you have answered in the grid on this page.

At the end of the examination, fasten all your work securely together.
 The number of marks is given in brackets [] at the end of each question or part question.

For Examiner's Use	
Section A	
Section B	
Total	

This document consists of **8** printed pages and **1** insert.

Section A

Answer **all** questions in the spaces provided.



Refer to the Insert.

1 (a) Name the style features using at least **two** words in **each** case.

- A
- B
- C
- D
- E
- F
- G
- H
- I
- J
- K
- L

[12]

(b) The blouse/top **View C** could be made up in **Linen Lawn** or **Polyester Crepe** fabrics.

Complete the following details:

(i) Fabric: **Linen Lawn**

- Structure
- Appearance
- Feel/handle
- Weight
- Colour application [5]

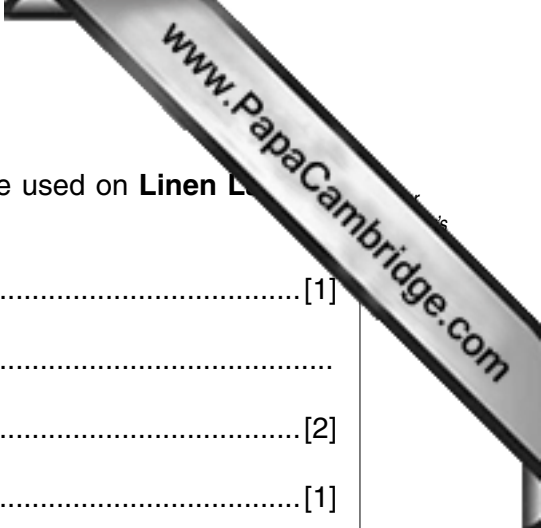
(ii) Fabric: **Polyester Crepe**

- Structure
- Appearance
- Feel/handle
- Weight
- Colour application [5]

(iii) State **two** reasons why **Linen Lawn** is suitable for the blouse/top, **View C**.

.....

..... [2]



(iv) Name **two** fabric finishes and explain how they could be used on **Linen Lawn** to improve its properties.

Fabric finish 1: [1]

How it improves the property:

..... [2]

Fabric finish 2: [1]

How it improves the property:

..... [2]

(c) (i) Give the correct machine stitch length for a plain seam worked on the blouse/top **View C** made in **Linen Lawn**.

..... [1]

(ii) Draw and label **two** suitable seam finishes which could be used on the seam.

[4]

(d) (i) Refer to the Insert showing the back of the pattern envelope.

Complete the following list of requirements for the blouse/top **View C**, size **10**:

Fabric: length:

fabric name

Buttons: quantity: made from: size:

Bias tape: width: made from:

Thread: quantity: made from : [9]

(ii) State **one** position on the blouse/top **View C** where interfacing could be used.

..... [1]

(iii) Give **two** reasons why interfacing is used.

.....
..... [2]

(iv) Suggest a suitable alternative fastening for the blouse/top **View C**, which could be worked in the same position.

..... [1]

(v) Give **one** reason for your choice of fastening.

..... [1]

(e) (i) Explain what is meant by the term 'multi-sized' pattern.

..... [1]

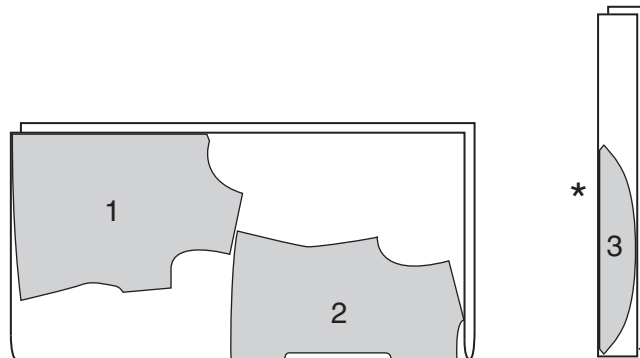
(ii) Explain how to choose the correct size.

..... [1]

(iii) Explain why there is a difference between the garment measurements and body measurements on pattern envelopes.

..... [1]

(f) Refer to the Insert. The fabric layout for the blouse/top **View C** is given below.



(i) Label the fold and selvages on the layout.

[4]

(ii) Name the pattern pieces.

1

2

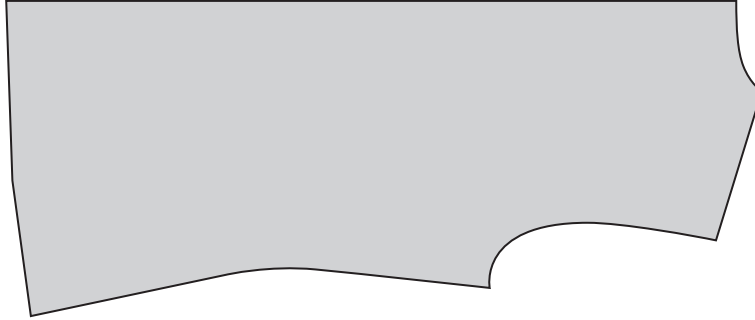
3

[3]

(iii) Explain why piece 3 has a * next to it.

.....
..... [2]

(iv) On the pattern piece below, draw and label **five** pattern markings.



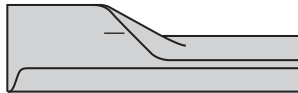
[5]

(g) Complete the instructions for making the neckline on blouse/top **View C**, using commercial bias tape.

Use **some** of the words from the following list:

- right machine straight slip-hemming top open out wrong
- zig-zag facing clip shoulder hemming seam

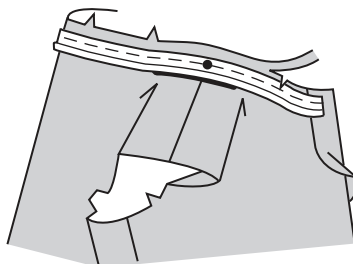
(i) one edge of the folded commercial bias tape. [1]



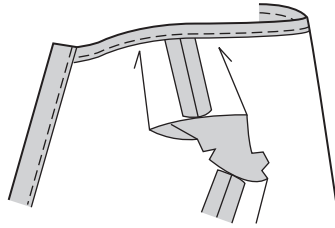
(ii) With sides together, pin and tack the tape to neck edge, making sure the crease is on the line. [2]

(iii) Match the bias tape with the balance mark on the seam. [1]

(iv) Overlap the raw ends of the binding over the front [1]



(v) Machine stitch the bias tape using stitch. Trim
and curves.



(vi) Turn facing to inside. Press. Stitch close to inner edge of facing using
..... stitch or by hand. [2]

(vii) On outside, stitch along neck edge. [1]

(h) Draw the iron symbol as used on care labels, with the correct temperature for:

(i) linen lawn

..... [1]

(ii) polyester crepe.

..... [1]

[Total: 78]

Section B

Answer **three** questions from this section.

- 2 (a) Name the source of **two** animal fibres. [2]
- (b) Briefly explain how flax fibres are obtained from plants in preparation for spinning. [4]
- (c) Describe **four** properties of flax/linen fibres, which make them suitable for clothing. [4]
- (d) (i) Explain what is meant by the term '**fibre blending**'. [2]
- (ii) Discuss **three** reasons why flax/linen is blended, naming a fibre blend in **each** case. [6]
- [Total: 18]
- 3 (a) When purchasing a new sewing machine, describe **four** functions which would be useful in general sewing. [4]
- (b) Explain **two** advantages of using a sewing machine instead of hand sewing. [2]
- (c) Using notes and labelled diagrams, explain how to:
- (i) prepare a side seam of a skirt before inserting a zipper on cotton poplin fabric; [6]
- (ii) insert the zipper by machine, using the semi-concealed method. [6]
- [Total: 18]
- 4 Refer to **View A** on the Insert.
- (a) Using notes and labelled diagrams, explain how to:
- (i) pin and tack an elastic casing on the sleeve in a cotton satin fabric; [4]
- (ii) machine the casing; [4]
- (iii) insert the elastic. [4]
- (b) Write an order of work for making a buttoned cuff on a long sleeve, in cotton/polyester gingham fabric. [6]
- [Total: 18]

- 5 Using notes and labelled diagrams, explain the differences between the terms listed below. [18]
- (a) Cotton fibres and cotton yarns [3]
 - (b) Tucks and pleats [3]
 - (c) Magyar sleeve and raglan sleeve [3]
 - (d) Bonded interfacing and woven interfacing [3]
 - (e) Worked loops and rouleau loops [3]
 - (f) A flat collar and a stand collar [3]
- [Total: 18]
- 6 (a) State **two** reasons why care labels are attached to garments. [2]
- (b) The iron symbol has already been mentioned in the question paper. Sketch and label **three** other garment care symbols, explaining why **each** is used. [6]
- (c) Describe how the following should be removed from a cotton denim fabric:
- (i) a grass stain
 - (ii) butter/margarine
 - (iii) a pen mark. [6]
- (d) Discuss **four** reasons why simple repairs and renovations should be carried out on garments. [4]
- [Total: 18]
- 7 Refer to the Insert.
- (a) Sketch and label a design or motif which could be worked on the front of a blouse/top. [3]
 - (b) Using satin, stem and detached chain stitches, show how these could be used in the design or motif in (a). [3]
 - (c) Using working diagrams, show how **two** of the stitches in (b) are worked. [6]
 - (d) Explain how the design or motif in (a) can be modified for working by machine. [2]
 - (e) Draw **two** decorative machine stitches and give details of how to work them on polyester satin. [4]
- [Total: 18]

Permission to reproduce items where third-party owned material protected by copyright is included has been sought and cleared where possible. Every reasonable effort has been made by the publisher (UCLES) to trace copyright holders, but if any items requiring clearance have unwittingly been included, the publisher will be pleased to make amends at the earliest possible opportunity.

University of Cambridge International Examinations is part of the Cambridge Assessment Group. Cambridge Assessment is the brand name of University of Cambridge Local Examinations Syndicate (UCLES), which is itself a department of the University of Cambridge.