



UNIVERSITY OF CAMBRIDGE INTERNATIONAL EXAMINATIONS
General Certificate of Education Ordinary Level



FASHION AND FABRICS

6050/02

Paper 2 Practical Test

October/November 2013

2 hours 30 minutes

Additional Materials:

Sewing equipment
Fabric
Pattern
Button
Scissors

Sewing thread to match fabric
Tacking thread
Pencil
Ruler



This document consists of **6** printed pages and **2** blank pages.



Materials provided

- (a) McCall's pattern **M6061**, size **CDD (2–3–4–5)**.
An illustration of the girl's dress (**view C**) is on the envelope containing the pattern.
- (b) A piece of fabric 90 cm wide and 42 cm long.
- (c) One 16 mm, two-holed button.
- (d) Sewing thread to match the fabric.
- (e) Tacking thread.

For the purpose of this test the facings are not to be interfaced. For the test you are to make up the **right half** of the shortened dress, **view C**, **size 5**, omitting the flowers.

Before you begin you should study the question paper carefully, together with the illustration, the pattern and the fabric.

This is a multi-sized pattern. The cutting line for **size 5** is shown by **the outer black solid line**.

A seam allowance of 1.5 cm is allowed within the pattern, unless otherwise stated, although it is not marked.

THE LABEL

Candidate's name

.....

Centre No./Candidate No.

..... /

The Test

1 Preparation

- (a) Write your name and candidate number on the envelope provided.
- (b) Select and separate pattern pieces 1, 2, 3, 4, 5 and 6 for the dress, **view C, size 5**.
- (c) On pattern pieces 2 and 4 cut off the bottom along the cutting line for **view A, size 5**.

2 Cutting out

- (a) Place the pattern pieces on the fabric as shown in the layout. For the purpose of this test, place pattern pieces 2 and 4 to the selvedge.
- (b) Use the fold line on pattern pieces 5 and 6 as the straight grain lines.
- (c) Cut out the **right half** of the shortened dress, **view C, size 5**.
- (d) Transfer the pattern markings which are needed for making up this test.

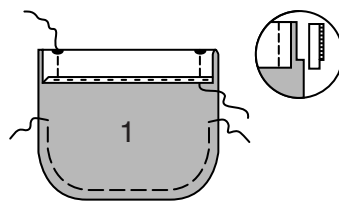
3 Making up

It is important that pressing is done at all stages.

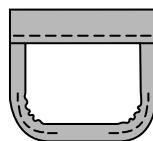
Make up the **right half** of the shortened dress as follows:

(a) Pocket

- (i) Neaten the upper edge of the pocket.
- (ii) Ease stitch the curved edge of the pocket 10 mm from the edge. See diagram.



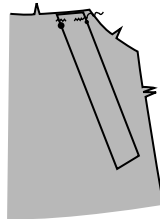
- (iii) Turn the upper edge to the outside along the fold line. Stitch the ends and trim.
- (iv) Turn the upper edge of the pocket to the inside and finish making up the pocket. See diagram.



- (v) Place the pocket in position on the dress front. Edge stitch the pocket and strengthen the corners.
- (vi) Secure the ends of machine stitching by hand.

(b) Strap

- (i) Make up the strap but do **not** stitch across the end with the balance mark.
- (ii) Turn right side out and press.
- (iii) Tack raw edges together.

(c) Attaching the strap

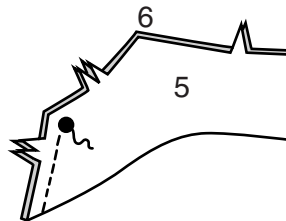
Place the shoulder strap on the outside of the dress front, matching balance marks and tack in place.

(d) Side seam

Join the front to the back at the side seam.

(e) Facings

- (i) Stitch the front facing to the back facing at the underarm, ending at the balance mark ●. See diagram.



- (ii) Neaten the unnotched edge of facing.

(f) Attaching the facing

- (i) With right sides together, attach the facing to the front and back, matching notches and balance marks.
- (ii) Machine stitch in place being careful not to catch the strap.
- (iii) Trim the seam and turn the facing to the inside. Press.
- (iv) On the wrong side hand stitch the facing to the side seam.
- (v) On the right side topstitch 5mm from upper edge of the front and back, pivoting at the corners and underarm.

(g) Buttonhole

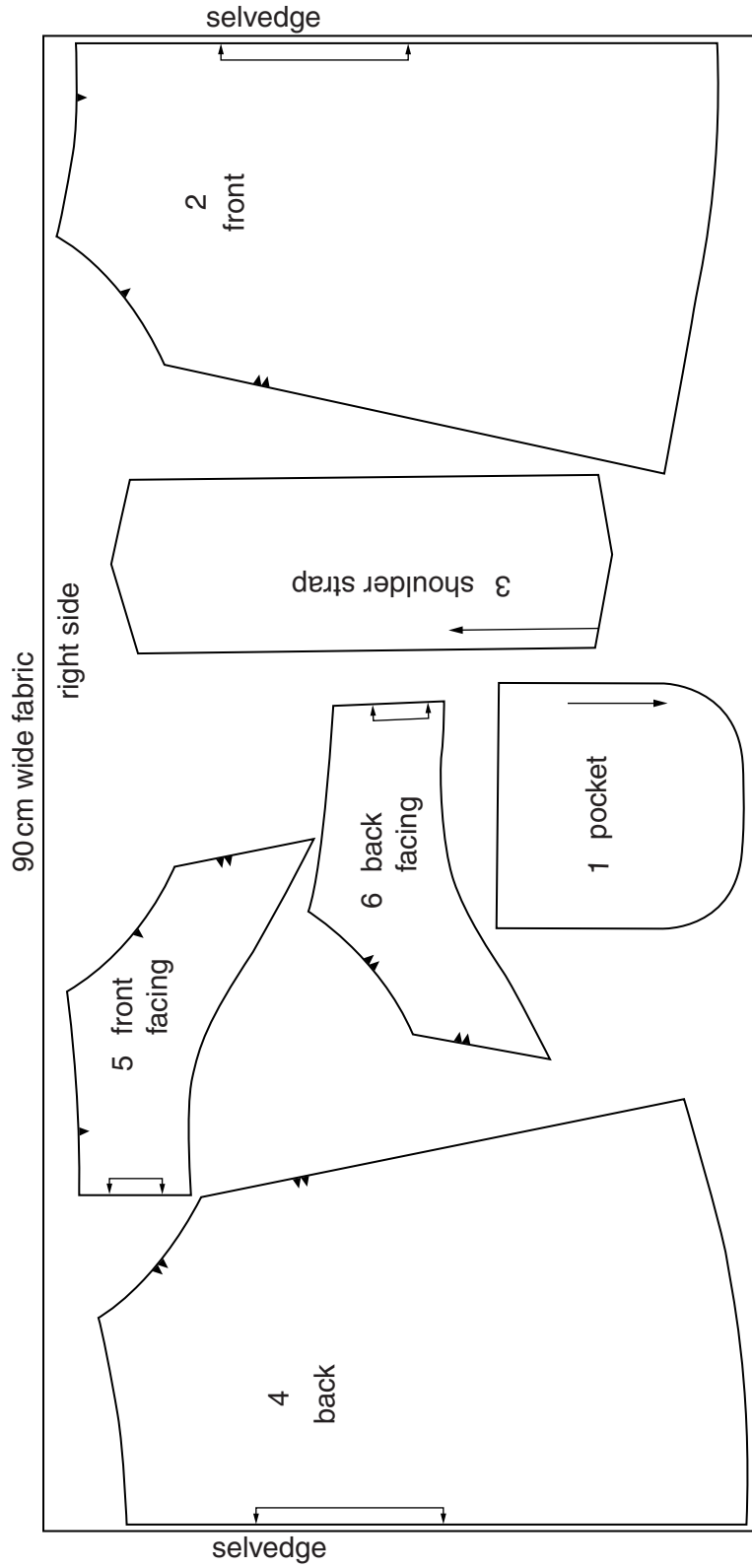
Work a machine stitched buttonhole on the dress back, to fit the button.

(h) Button

Hand sew the button in place on the strap.

(i) Presentation

- (i)** At the end of the examination remove the needle and unnecessary pins from your work.
- (ii)** Write your name and candidate number on the label provided. Cut out the label and tack it to your test. The label should not cover any stitching and should be on **single fabric**.
- (iii)** Press your work, fold it carefully and place it in the envelope provided. Do **not** include the pattern or the scraps of fabric you have left over.



Note For the purpose of this test, place pieces 2 and 4 to the selvedge. On pieces 5 and 6 use the 'place on fold' as the straight grain.

Permission to reproduce items where third-party owned material protected by copyright is included has been sought and cleared where possible. Every reasonable effort has been made by the publisher (UCLES) to trace copyright holders, but if any items requiring clearance have unwittingly been included, the publisher will be pleased to make amends at the earliest possible opportunity.

University of Cambridge International Examinations is part of the Cambridge Assessment Group. Cambridge Assessment is the brand name of University of Cambridge Local Examinations Syndicate (UCLES), which is itself a department of the University of Cambridge.