

OCR GCSE D&T INNOVATOR SUITE - REMINDER OF CHANGES FROM SEPTEMBER 2012

Last year the Government confirmed that unitised GCSEs were to be replaced by linear assessment for all candidates starting a two-year course from September 2012.

The reforms were designed to:

- Ensure that GCSE examinations are taken at the end of the course by making all assessment linear
- Remove the potential for re-sitting individual units meaning examinations for the majority of subjects will only take place in the June series

For more information about these changes visit
ocr.org.uk/gcse2012

ADDITIONAL CHANGES TO D&T

In addition to the changes to our D&T specifications necessary to comply with requirements for linear assessments, we also made some additional changes to improve the structure of the assessment. These are detailed below.



GCSE DESIGN AND TECHNOLOGY

OVERVIEW

- The D&T Innovator suite now has 3 units instead of 4 units: (Units 1,3 and 5)
- All 3 units must be entered at the end of the two-year course (i.e. students who started the course in September 2012 will need to sit all units in June 2014)
- The Short Course for D&T Innovator subjects is no longer available
- A Short Course qualification can still be gained in D&T by entering for the Short Course on GCSE Product Design (Units A551 and A552)

UNIT 1 INTRODUCTION TO DESIGNING AND MAKING

A511, A521, A531, A541, A561, A571

UNIT 3 MAKING QUALITY PRODUCTS

A513, A523, A533, A543, A563, A573

- The two Controlled Assessment Units 1 and 3 remain the same including the set tasks/themes.
- There are slight changes in the wording in the assessment criteria to improve accessibility
- The guidance on Controlled Assessment to Centres has been up-dated
- Centres can carry forward the moderated Controlled Assessment mark to another session i.e. June 2015
- No change in the rules for Controlled Assessment

UNIT 5 SUSTAINABILITY AND TECHNICAL ASPECTS OF DESIGNING AND MAKING

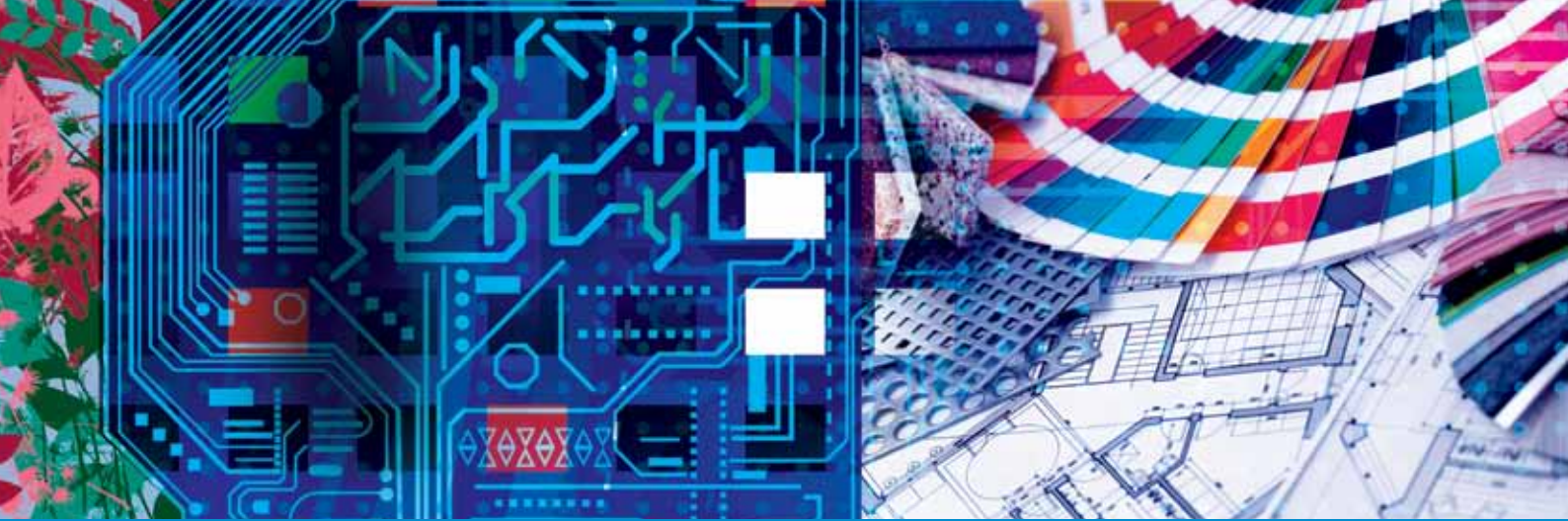
A515, A525, A535, A545, A565, A575

- The new written paper has 80 marks and is one and a half hours in length
- **Section A** consists of 15 short answer questions and one question which may involve sketching, annotation, short sentences and extended writing. This section will focus on sustainability, product analysis and design.
- **Section B** consists of three questions which may involve sketching, annotation, short sentences and extended writing. This section will focus on the technical aspects of working with materials, tools and equipment and design of products.
- All duplication has been removed from the specification content
- Candidates will be marked on the Quality of Written Communication in this paper.

UNIT 2 & 4

A512, A514, A522, A524, A532, A534, A542, A544, A562, A564, A572, A574

The above units no longer exist in the linear specification



GCSE PRODUCT DESIGN

OVERVIEW

- All 4 units must be entered at the end of the two-year course
- The Short Course is two units A551 and A552

CONTROLLED ASSESSMENT

- The two Controlled Assessment units remain the same including the set tasks/themes and assessment criteria remain unchanged
- The guidance on Controlled Assessment to Centres has been updated
- Centres can carry forward the moderated Controlled Assessment mark to another series i.e. June 2015
- No change in the rules for Controlled Assessment

UNIT 1: A551 DEVELOPING AND APPLYING DESIGN SKILLS

UNIT 2: A552 DESIGNING AND MAKING INNOVATION CHALLENGE

UNIT 3: A553 MAKING, TESTING & MARKETING PRODUCTS

UNIT 4: A554 DESIGN INFLUENCES

- This qualification is made up of two Controlled Assessment units, A551 and A553 and two external assessments A552 and A554
- These unit numbers and the content to be taught is exactly the same as the current Product Design qualification

STAY UPDATED

Sign up to receive e-alerts at www.ocr.org.uk/updates, and be the first to find out all the latest information about our D&T qualifications, support and training.

JOIN OUR SOCIAL COMMUNITY

The OCR D&T social network is a FREE platform where teachers can engage with each other – and with us to share ideas and best practice, offer guidance and access a range of support materials produced by other teachers. To sign up go to www.social.ocr.org.uk

NEED MORE HELP?

Our team is happy to help. You can contact them on 01223 553 998 or at general.qualifications@ocr.org.uk